

# Air Transport Statistics

## Fourth quarter, 2025

**Tirana, 30 January 2026:** In air transport, during the fourth quarter of 2025, operated 28 airlines, of which 27 are foreign companies and 1 is Albanian companies. In the Albanian airspace have flown 89,257 aircrafts, of which 82.8 % were overpasses.

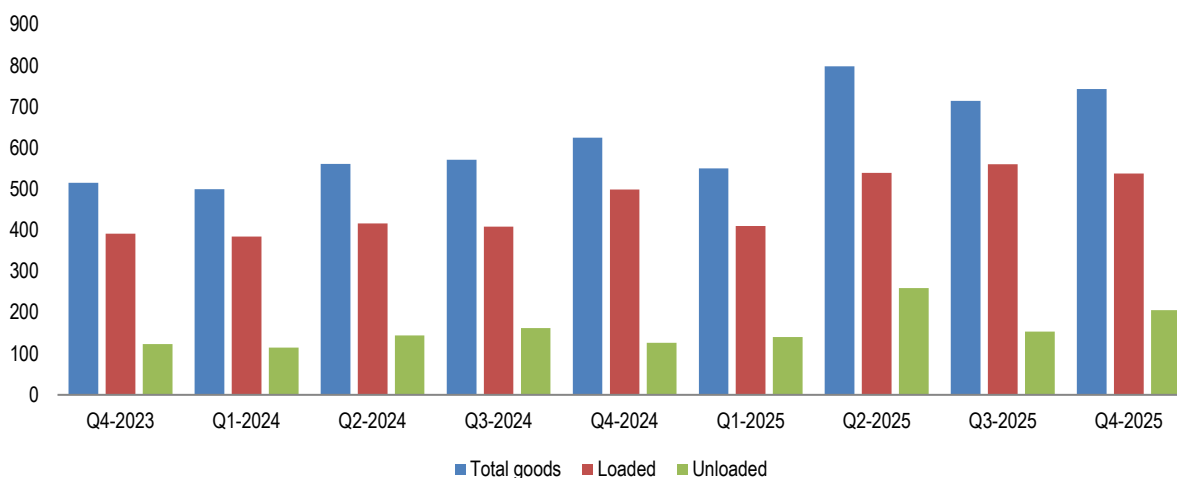
**Tab. 1: Dynamics of air transport**

Period	Q4-2023	Q1-2024	Q2-2024	Q3-2024	Q4-2024	Q1-2025	Q2-2025	Q3-2025	Q4-2025
Number of airlines	18	19	25	28	18	19	29	31	28
Number of flights	13,836	13,334	18,600	21,572	15,072	13,332	18,458	22,938	15,396
Number of overpasses	52,426	41,733	84,316	111,141	67,570	51,814	91,615	116,985	73,861

**Source:** Ministry of Infrastructure and Energy, calculations INSTAT

The volume of loaded and unloaded freights (including air mail) via air transport is 743 tons, of which 72.4 % are loaded and 27.6 % are unloaded freights. Compared to the fourth quarter of 2024, the volume of freights increased by 18.9 %.

**Fig. 1: Volume of freights and mail transported by air, tonnes**



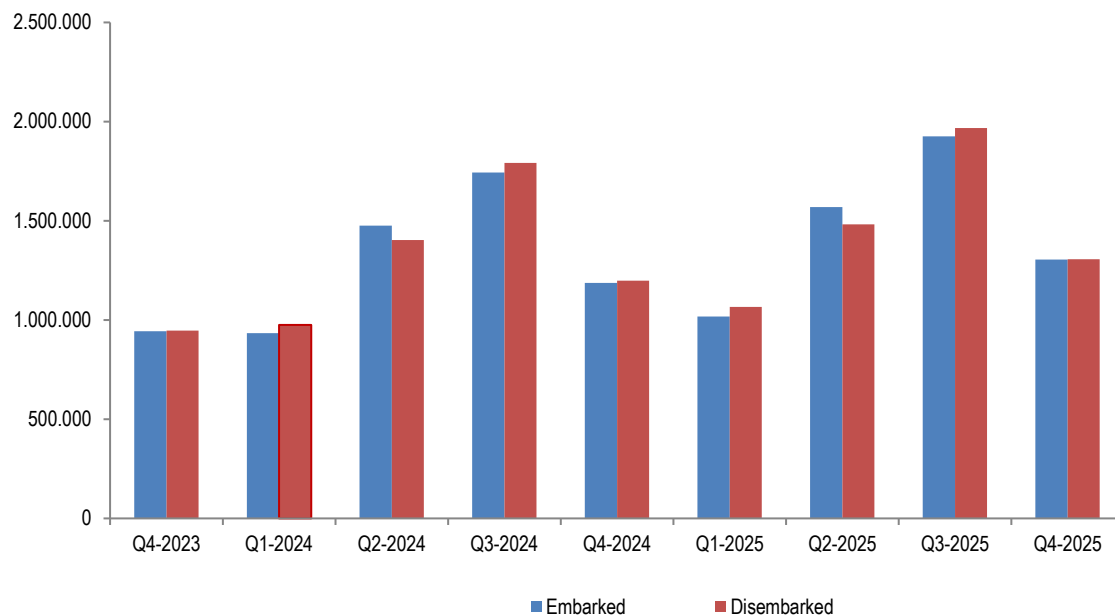
**Source:** Ministry of Infrastructure and Energy, calculations INSTAT

**For release 30/01/2026**

*Continues*

In the fourth quarter of 2025, 2,611,748 passengers traveled by airline from 2,385,329 passengers compared to the same period of the previous year, increasing by 9.5 %.

**Fig. 2: Passenger Air Transport**

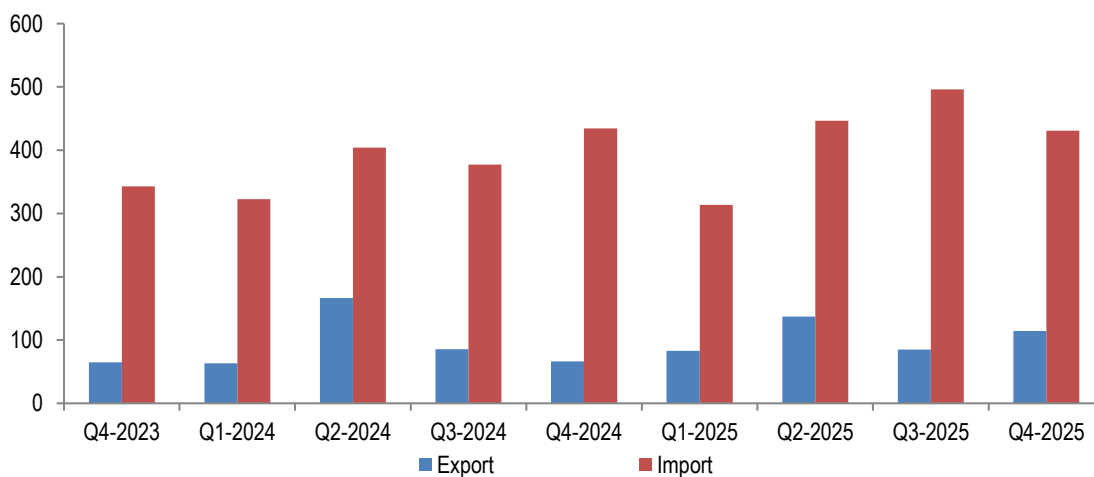


*Source: Ministry of Infrastructure and Energy, calculations INSTAT*

### Exports/Imports of freights by air transport

In the fourth quarter of 2025, the volume of goods traded by air (exports and imports) is 545 tonnes. Compared to the same period of 2024 this indicator increased by 8.8 %. The volume of goods imported by air in the fourth quarter of 2025 accounts 0.03 % of the total volume of imported goods.

**Fig. 3: Export / import of freights by air**



*Source: General Directorate of Customs, calculations INSTAT*

# Methodology

The publication of Transport Statistics presents the results on the transport of goods and passengers as well as the export and import of goods according to the mode of transport on a monthly basis. The data of the publication are obtained from administrative sources. The main source of information is the data reported from the Ministry of Infrastructure and Energy and the General Directorate of Customs.

## Definitions

**Transport:** Movement of people and / or freights using various means of transport. Transport is carried out by air.

**Air transport:** Any movement of freights and / or passengers using aircraft on trips, which are undertaken wholly or partly by air

**Airport:** A designated area of land or water (including buildings, installations and equipment) intended to be used either in whole or in part for the arrival, departure and surface movement of aircraft and open to commercial air transport operations.

**Airline:** An aviation enterprise operating aircraft for commercial purposes that (i) performs scheduled air transport services, or both, which are publicly available for the carriage of passengers, mail, and / or cargo, and (ii) has been certified for such purposes by the civil aviation authority of the State in which it is established.

**Passenger Air Service:** Scheduled or non-scheduled air service performed by aircraft carrying one or more arriving passengers and any flight listed in published schedules as open to passengers.

**Air cargo and mail service:** Scheduled or non-scheduled air service performed by aircraft carrying incoming cargo (freight and mail), other than passengers.

**Flight Number:** It's the third published initial number assigned by the air transport operator to the flight. Passengers using a flight from an aircraft may travel under a number of different flight numbers.

**Carried passengers:** All passengers whose journey begins or ends at the reporting airport are called.

**Transported freights:** Includes any cargo loaded onto or unloaded from an aircraft, excluding passenger baggage and mail.

**Exports:** Goods destined to a third country, placed under customs export or outward processing arrangements or re-exported following inward processing.

**Imports:** Goods arrived from a third country and are directly placed, or are left in warehouse, under customs procedure of release for free circulation, inward processing or processing under customs control.

*The data of air transport are preliminary and subject to revision. For more refer: [Statistical revision policy](#).*

## Explanation of Symbols

**0** - value less than half of unit of measure

- No value

(...) missing data