

WAGES STATISTICS

Quarter I 2026

In the first quarter of 2026, the average monthly gross wage per employee in Albania was 90,119 ALL. Compared to the first quarter of 2025, the average monthly gross wage increased by 9.6%.

Wages by economic activity NACE Rev 2.0

Economic activities with an average wage higher than the national average are:

- Financial and Insurance Activities, with an average gross monthly wage of 157,434 ALL;
- Information and communication, with an average gross monthly wage of 131,747 ALL.

The highest increase in the average wage was recorded in the "Construction" sector, at 22.2%, while the lowest increase was recorded in the "Arts, entertainment and recreation, and other service activities" sector, at 5.5%.

Wages by professions ISCO-08

The professions with an average wage higher than the national average are:

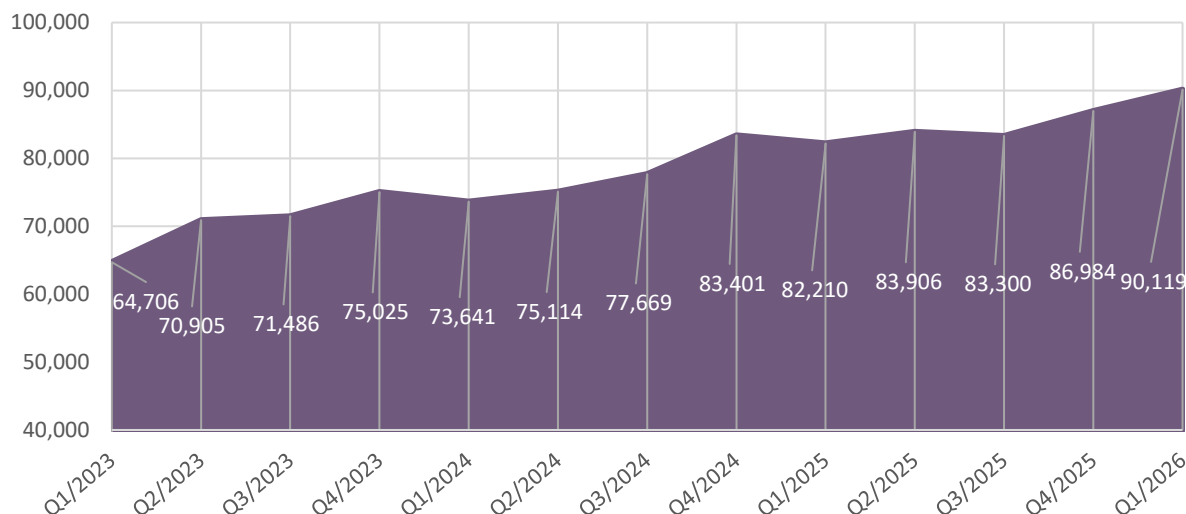
- Managers, Lawmakers, Senior civil servants and Executive directors, with an average gross monthly wage of 136,213 ALL
- Professionals, with an average gross monthly wage of 116,074,213 ALL

The highest increase in the average wage was recorded in the occupations "Craft and related trades workers" at 15.7%, followed by "Elementary occupations" at 15.3%.

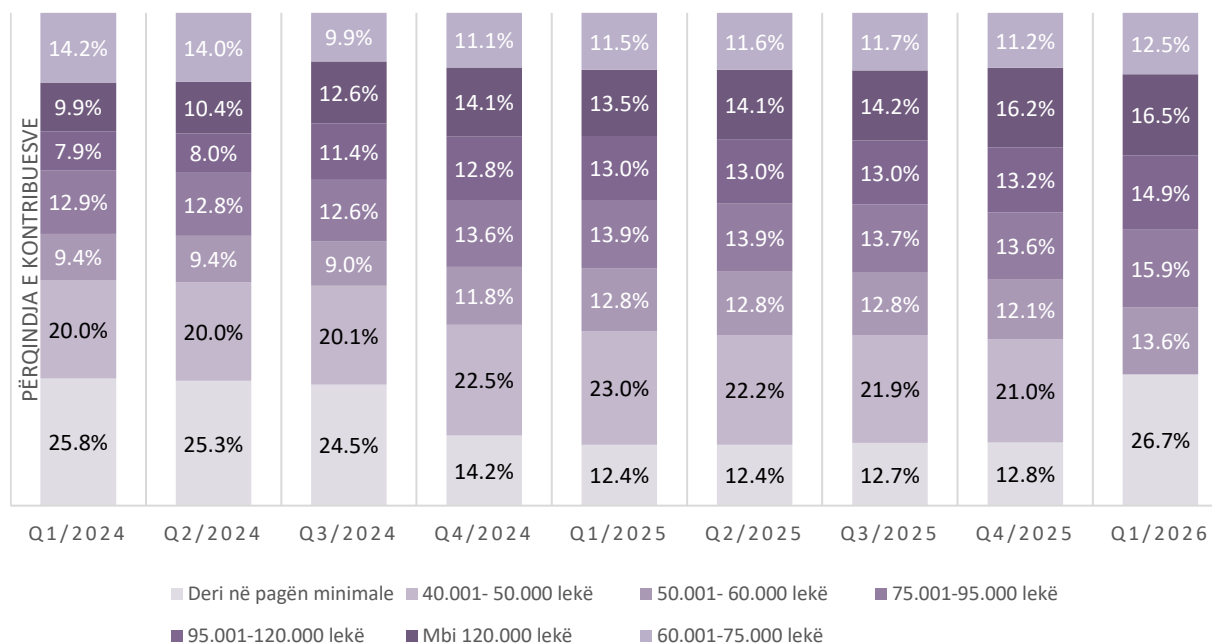
Distribution of employees by wage level

During the first quarter of 2026, the following is observed:

- The distribution of employees appears more concentrated at the extremes of the wage intervals, with an increase in both minimum-wage earners and high-wage earners.
- There is a significant increase in the number of minimum-wage employees, due to the rise in the minimum wage from 40,000 ALL to 50,000 ALL on January 1, 2026, by decision of the Council of Ministers.

FIG.1 AVERAGE MONTHLY GROSS WAGE PER EMPLOYEE (ALL)¹

Source of information: General Directorate of Taxes, Social Security contributors; INSTAT calculations

FIG.2 DISTRIBUTION OF EMPLOYEES BY GROUPS OF AVERAGE GROSS MONTHLY WAGE*

*) Note: The minimum wage in the country was 26,000 ALL in 2020, 30,000–34,000 ALL during the period 2021–2023, 40,000 ALL during the period Q2 2023–Q4 2025, and 50,000 ALL from Q1 2026 onwards.

Source of information: General Directorate of Taxes, Social Security contributors; INSTAT calculations

Note to users: Detailed monthly and annual data by groups are available in the INSTAT statistical database :

[Wages](#)

¹ Bonuses and wage supplements are a part of the average gross monthly wage for a paid employee, which at the end of each semester significantly increase the average gross monthly wage (see methodological note).

METHODOLOGY

The publication of wage data provides detailed information on the level, distribution and changes in wages between quarters, enabling comparisons across industries and occupational groups. These statistics are important for monitoring economic indicators and assist policymakers, employers and unions in assessing supply and demand conditions in the labour market.

The source of data on wages is the General Directorate of Taxes. The General Directorate of Taxes, based on the memorandum of cooperation, sends data from the Payroll (E-SIG 025) to INSTAT. This form serves for the declaration of three types of tax liabilities:

- Social Security Contributions,
- Health Insurance Contributions,
- Employment Income for employees.

The variables in the dataset are of three types: original file variables from the General Directorate of Taxes (DPT), additional variables from INSTAT, and derived variables. The additional variables include the main economic activity and the size of the enterprise, while the derived variables are related to the employment category and occupation. The aim is to enable a more detailed analysis of the structure of employment and wages. The two main variables of interest in this dataset are the number of employees and the gross monthly wage paid by employers.

Definitions

Average monthly wage The calculation of the average gross monthly wage includes only waged contributors who worked 18 or more days during the reference month. These contributors include all economic activities, including agriculture, forestry and fishing, declared to the General Directorate of Taxes. The average gross monthly wage consists of:

- wage supplements for management positions,
- wage supplement for seniority in work,
- wage supplement for difficulties at work,
- other regular additions (titles, ranks, etc.),
- Bonuses

Personal contributions and income tax are not deducted from the average gross monthly wage.

Median gross monthly wage - is the average monthly wage in the middle of the wage distribution.

Real wage - is the nominal wage adjusted for the level of price changes.

Minimum monthly wage - is the lowest wage approved by decision of the Council of Ministers.

The classification

- The classification of enterprises is made according to the Nomenclature of Economic Activities, NACE Rev. 2, as follows:

NACE Rev.2 (Section)	Description
A	Agriculture, Forestry and Fishing
B	Mining and Quarrying
C	Manufacturing
D	Electricity, Gas, Steam and Air Conditioning Supply
E	Water Supply; Sewerage, Waste Management and Remediation Activities
F	Construction
G	Wholesale and Retail Trade; Repair of Motor Vehicles and Motorcycles
H	Transportation and Storage
I	Accommodation and Food Service Activities
J	Information and Communication
K	Financial and Insurance Activities
L	Real Estate Activities
M	Professional, Scientific and Technical Activities
N	Administrative and Support Service Activities
O	Public Administration and Defence; Compulsory Social Security
P	Education
Q	Human Health and Social Work Activities
R	Arts, Entertainment and Recreation
S	Other Service Activities
T	Activities of Households as Employers; Undifferentiated Goods- and Services-Producing Activities of Households for Own Use
U	Activities of Extraterritorial Organizations and Bodies

- The classification of occupations is made according to the International Classification of Occupations, ISCO-08, as follows:

ISCO_08	Description
1	Managers, Lawmakers, Senior civil servants and Executive directors
2	Professionals
3	Technicians and Associate Professionals
4	Clerical Support Workers
5	Services and Sales Workers
6	Skilled Agricultural, Forestry and Fishery Workers
7	Craft and Related Trades Workers
8	Plant and Machine Operators, and Assemblers
9	Elementary Occupations
0	Armed Forces Occupations