

Accommodation Establishments

Fourth Quarter, 2021

Tirana, 19 November 2021: In the fourth quarter 2021, the occupancy variables of accommodation establishments are presented as below:

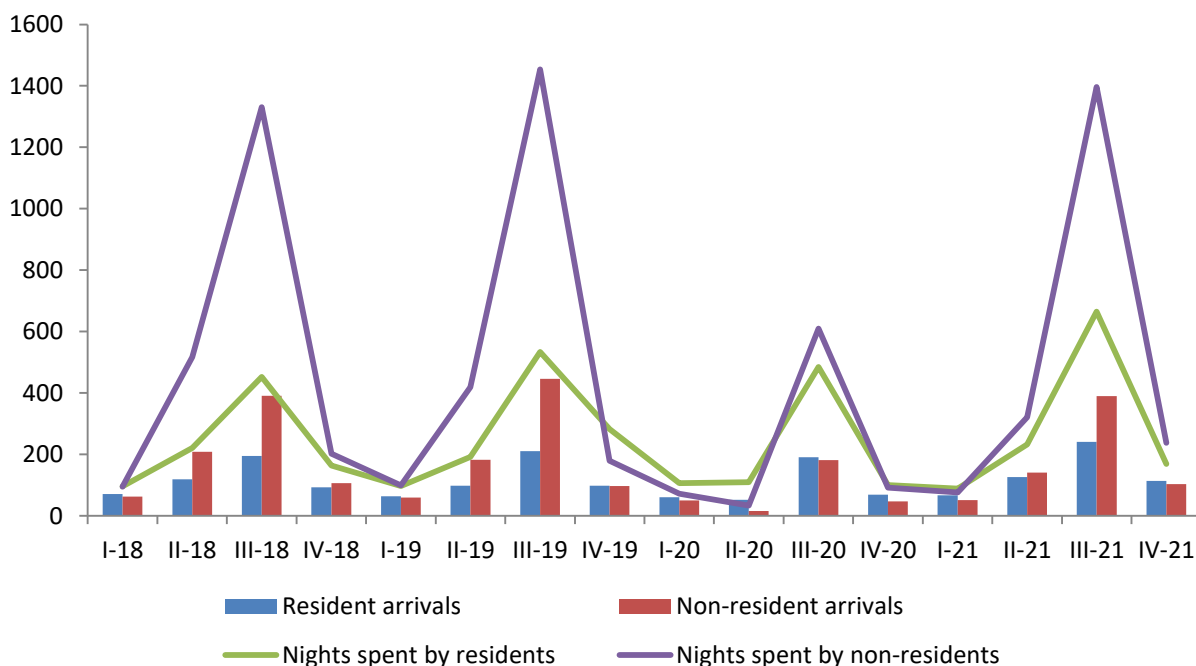
The number of total arrivals has increased by 89.2 %, compared to the fourth quarter 2020. The same trends follow the two below indicators:

- number of resident arrivals increased by 65,9 %;
- number of non-resident arrivals increased by 2.2 times;

The number of total nights spent has increased by 2.1 times, compared to the fourth quarter 2020. The same trends follow the two below indicators:

- number of nights spent by residents increased by 68.9 %;
- number of nights spent by non-residents increased by 2.6 times;

Fig. 1 Total arrivals and nights spent (number in thousand)



Arrivals

During the fourth quarter of 2021, there was an increase in the number of total arrivals by 89.2 %, compared to the fourth quarter of 2020. The number of resident arrivals who were accommodated in the Northern Region marked the highest increase of 2.4 times. In Coastal areas this indicator has increased by 2.1 times, compared to the same period of the previous year. The number of resident arrivals who were accommodated in the “Holiday and other short-stay accommodation” marked the highest increase of 2.1 %.

In the fourth quarter 2021, the highest number of visitors results:

- by regions in the “Center Region” (49.9 %);
- by location close to the sea in “Non-coastal areas” (66.5 %);
- by type of accommodation establishments in “Hotels and similar accommodation” (96,9 %);

Tab.1 Arrivals by region, location close to the sea and type of accommodation

	Resident			Non-resident		
	Q.IV 2019	Q.IV 2020	Q.IV 2021	Q.IV 2019	Q.IV 2020	Q.IV 2021
Regions						
Northern region	18,677	10,859	26,288	20,361	4,763	18,800
Center region	37,128	28,073	38,007	55,196	36,952	70,061
Southern region	41,876	29,178	48,698	21,250	4,569	14,547
Type of location close to the sea						
Coastal area	27,956	16,042	33,936	28,327	15,420	38,628
Non-coastal area	69,725	52,068	79,057	68,480	30,864	64,780
Type of accommodation						
Hotels and similar accommodation	89,930	65,524	108,449	93,510	45,467	101,223
Holiday and other short-stay accommodation	6,850	1,867	3,942	3,073	811	1,826
Camping grounds, recreational vehicle parks and trailer parks	901	719	602	224	6	359
Total	97,681	68,110	112,993	96,807	46,284	103,408

Nights spent

During the fourth quarter of 2021 the total number of nights spent increased by 2.1 times, compared to the fourth quarter of 2020. The number of nights spent by residents who have been accommodated in Northern Region has marked the highest increase by 93.3 %. In Coastal areas has increased by 2.8 times, compared to the same period of the previous year. The number of nights spent by residents who have been accommodated in “Hotels and similar accommodation” has marked the highest increase by 74.8 %.

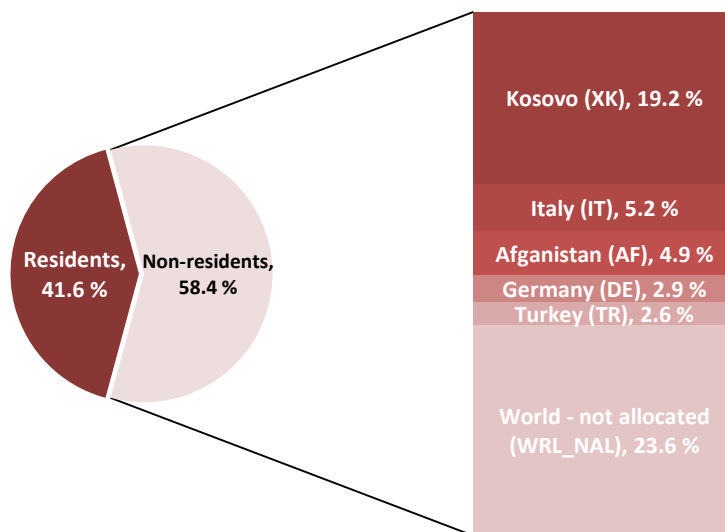
In the fourth quarter of 2021, the highest number of nights spent was realized:

- by regions in the “Center Region” (55.2 %);
- by areas of proximity to the coast in “Non-coastal areas” (53.7 %);
- by type of accommodation structures in “Hotels and similar accommodation” (96.7 %);

Tab.2 Nights spent by region, location close to the sea and type of accommodation

	Resident			Non-resident		
	Q.IV 2019	Q.IV 2020	Q.IV 2021	Q.IV 2019	Q.IV 2020	Q.IV 2021
Regions						
Northern region	61,524	19,108	36,933	39,640	13,971	40,034
Center region	128,860	38,171	62,098	95,085	65,496	162,141
Southern region	91,591	42,767	69,912	43,973	11,949	34,810
Type of location close to the sea						
Coastal area	143,896	24,217	67,536	59,758	30,116	120,407
Non-coastal area	138,079	75,829	101,407	118,940	61,300	116,578
Type of accommodation						
Hotels and similar accommodation	259,705	91,751	160,336	167,211	86,371	232,038
Holiday and other short-stay accommodation	19,228	7,568	7,836	10,880	5,033	4,262
Camping grounds, recreational vehicle parks and trailer parks	3,042	727	771	607	12	685
Total	281,975	100,046	168,943	178,698	91,416	236,985

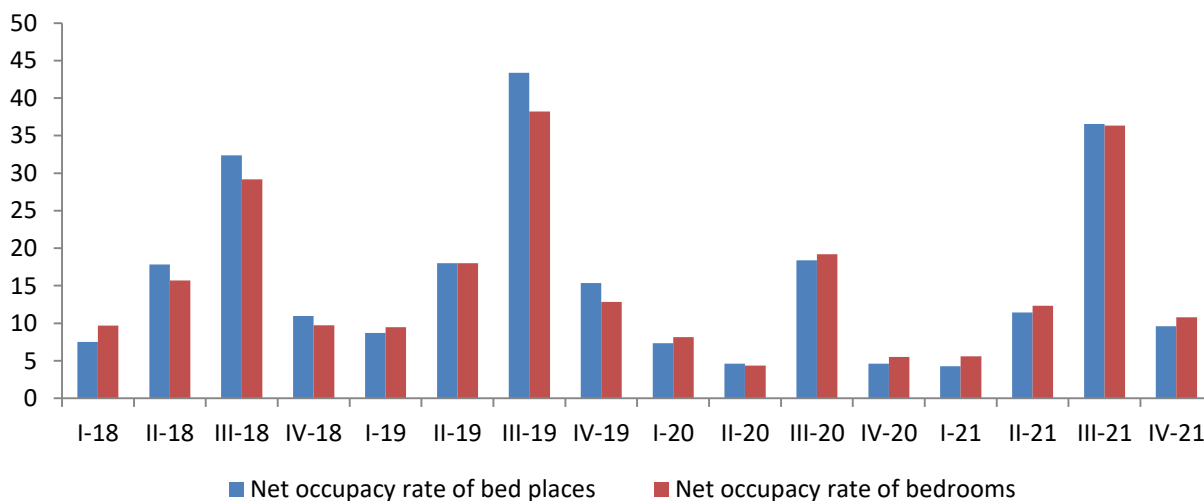
Fig.2 Non-residents nights spent by country of residence (%)



Net occupancy rate

Net occupancy rates, of bedrooms and bed places, are two indicators that measure the percentage of accommodation capacities use, bedrooms and bed places available for visitors. During this quarter, net occupancy rate of bedrooms of "Hotels and similar accommodation" is 10.8 %, against to 5.5 % that was in the fourth quarter of 2020. Net occupancy rate of bed places of "Hotels and similar accommodation" is 9.6 %, compared to 4.6 % that was in the fourth quarter of 2020.

Fig.3 Net occupancy rates (%)



Methodology

General information:

INSTAT for the first time calculates and publishes the indicators of accommodation statistics which represent the tourism capacity offer in the country.

The purpose of the survey to hotels and other similar accommodation establishments is to monitor tourism activities, to calculate statistical variables about accommodation offer of Albanian tourism, which are important to determine the trend of capacity development in the tourism sector. Data are collected every month through the questionnaire "Survey of Accommodation Establishments".

Coverage area

The scope of observation (or the target population) in accommodation statistics includes all tourist accommodation establishments from the Statistical Business Register of 2019. Tourism accommodation establishments are classified and described in groups according to NACE Rev. 2 classification as follow:

55.10 Hotels and similar accommodation. This class includes accommodation provided by: hotels, resort hotels, suite/apartment hotels and motels.

55.20 Holiday and other short-stay accommodation. This class includes accommodation provided by: children and other holiday homes, visitor flats and bungalows, cottages and cabins without housekeeping services, youth hostels and mountain refuges.

55.30 Camping grounds, recreational vehicle parks and trailer parks. This class includes: provision of accommodation in campgrounds, trailer parks, recreational camps and fishing and hunting camps for short stay visitors.

Non-registered visitors and accommodation establishments are not subject of this survey.

Indicators collected from the survey include:

- Arrivals of residents;
- Arrivals of non-residents;
- Nights spent of residents;
- Nights spent of non-residents;
- Occupied bedrooms by residents;
- Occupied bedrooms by non-residents);
- Number of bedrooms;
- Number of bed places;

Data collection and data processing methodology is based on Annex I of Regulation (EU) No 692/2011 of the European Parliament and of the Council of 6 July 2011 concerning European statistics on tourism.

Definitions:

The accommodation establishment in the accommodation statistics includes all tourist accommodation establishments providing, as a paid service (although the price might be partially or fully subsidised), short-term or short-stay accommodation services.

Bedroom: in an accommodation establishment or dwelling is the unit formed by one room or groups of rooms which are rented by tourists as a whole (and constituting an indivisible rental).

Bed place: is determined by the number of persons who can stay overnight in the beds set up in the establishment, ignoring any extra beds that may be set up upon customer request.

Arrival: is defined as a person who stays at least one night in the hotel, children included.

Resident: is considered a person who has resided in Albania for more than 12 consecutive months.

Non-Resident: is considered a person who has not resided in Albania for more than 12 consecutive months.

A night spent: (or overnight stay) is each night a guest / tourist (resident or non-resident) actually spends (sleeps or stays) in a tourist accommodation establishment or non-rented accommodation.

The net occupancy rate of bed places = $\frac{\text{Number of nights spent}}{\text{Number of available bed places}} * 100$ measures the percentage of occupied bed places for "Hotels and similar accommodation".

The net occupancy rate of bedrooms = $\frac{\text{Number of occupied bedrooms}}{\text{Number of available bedrooms}} * 100$ measures the percentage of occupied bedrooms for "Hotels and similar accommodation".

Statistical regions at level 1, 2 and 3 are defined according to the NUTS II territorial division, which is a unified classification and is used as a basis for the collection and processing of European Regional Statistics. The information below includes which prefectures are in the North, Centre and South region.

Northern Region: Dibër; Durrës; Kukës; Lezhë; Shkodër

Centre Region: Elbasan; Tiranë

South Region: Berat; Fier; Gjirokastër; Korçë; Vlorë

Coastal areas are Local Administrative Units (LAUs) that are on or near a coastline. Coastal areas are classified according to the following two categories:

- **Coastal areas:** LAUs bordering the coastline or LAUs having at least 50% of their surface at a distance of 10 km from the coastline;
- **Non-coastal areas:** LAUs that are not "coastal areas"; which means LAUs that are not bordered by the coastline and have less than 50% of their surface at a distance of 10 km from the coastline.