

Culture statistics

Fourth quarter - 2019

Tiranë, 31 January 2020: The number of cultural activities in the fourth quarter of the year 2019 is 383, showing an increase of 2.7 %, compared to the fourth quarter of 2018. In art and cultural institutions, in the fourth quarter of 2019, are registered 71,477 spectators, 2.8 % less, compared to the same period of previous year.

In the year 2019, are performed in total 1,124 shows, showing an increase of 8.9 %, compared to the year 2018.

The number of spectators in the year 2019 is 223,614, showing an increase of 3.1 %, compared to the year 2018. The average attendance in art and cultural institutions has decreased by 5.1 %, both in the fourth quarter and in the year 2019, compared to the same periods of the last year.

Art and Culture Institutions

The National Experimental Theater is the institution that has achieved the highest number of shows, with 142 shows, 31 shows less, compared to the fourth quarter of 2018.

The National Experimental Theater has achieved the highest number of shows, with 444 shows, 2.8 % less, compared to the year 2018. National Center for Children's Culture ranks the second for the highest number of shows, both in the fourth quarter of 2019 and in the year 2019. The number of performed shows has increased compared to the previous period.

Tab.1 Total number of shows/premieres in the institutions of culture

Number of shows/premieres	Q.4-2019	Q.4-2018	Quartly change in %	Year 2019	Year 2018	Yearly change In %
National People's Theater	51	61	-16.4	157	156	0.6
The National Experimental Theater	142	173	-17.9	444	457	-2.8
National Theater of Opera, Ballet and National Ensemble	68	31	119.4	161	97	6.6
National Center for Children's Culture	89	70	27.1	236	198	19.2
National Circus	33	38	-13.2	126	124	1.6
Total number of shows/premieres	383	373	2.7	1,124	1,032	8.9

For release 31/01/2020

Continues

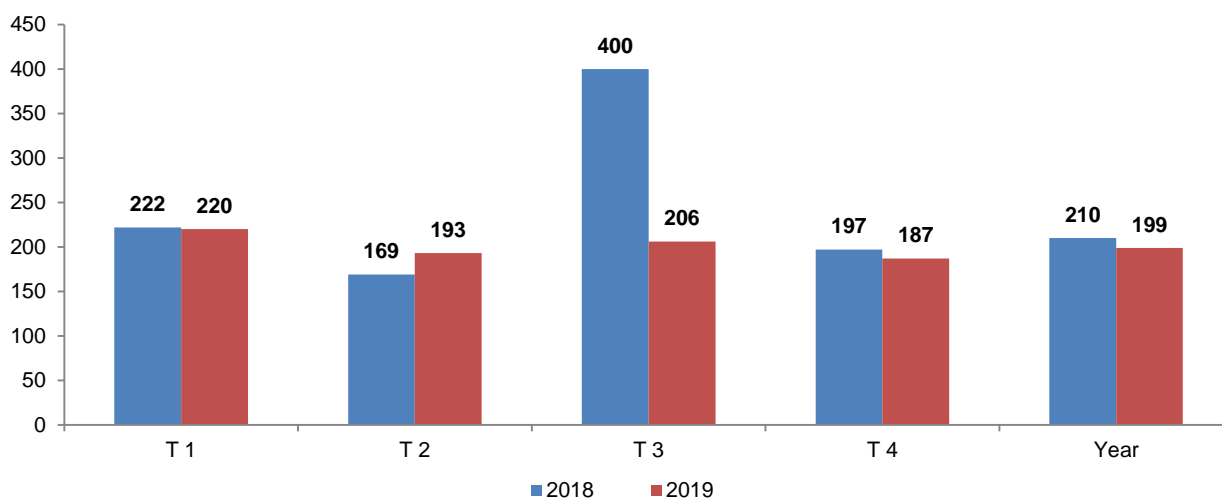
In the fourth quarter of 2019, The National Theater of Opera, Ballet and National Ensemble is the institution that has achieved the highest number of spectators, with 26,567 spectators, 6.8 % more, compared to the same period of the previous year. The same institution has achieved the highest number of spectators in the year 2019, with 70,647 spectators, 29.8 % more than in the year 2018. The National Experimental Theater is the second largest institution with the highest number of spectators for both periods.

Tab.2 Total number of spectators in the institutes of culture

Number of spectators	Q.4-2019	Q.4-2018	Quarterly change in %	Year 2019	Year 2018	Yearly change In %
National People's Theater	8,470	10,959	-22.7	34,790	39,503	-11.9
The National Experimental Theater	20,421	19,892	2.7	64,684	65,989	-2.0
National Theater of Opera, Ballet and National Ensemble	26,567	24,873	6.8	70,647	54,438	29.8
National Center for Children's Culture	11,219	9,108	23.2	31,795	22,051	44.2
National Circus	4,800	8,722	-45.0	21,698	34,968	-38.0
Total number of spectators	71,477	73,554	-2.8	223,614	216,950	3.1

The average number of spectators per show fell slightly, from 197 spectators per show, in the fourth quarter of 2018, to 187 spectators per show, in the fourth quarter 2019. The decline is 5.1 %. In the year 2019, the average number of spectators for the show is 199, out of 210 in the year 2018.

Fig.1 Average attendance of spectators for closed shows in culture institutions



For more information, please visit the website: <http://www.instat.gov.al/en/home.aspx>

Cultural Heritage

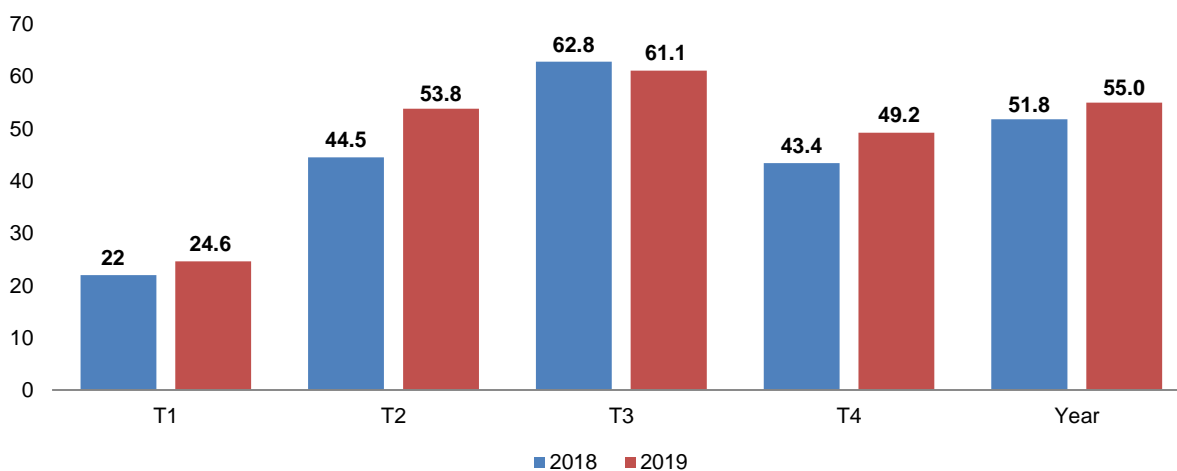
The total number of visitors in museum, castle and archaeological parks, in the fourth quarter of 2019 is 150,634 visitors, showing an increase of 12.6 %, compared to the fourth quarter of 2018. From the total number of visitors in cultural heritage institutions, 59,020 are visitors in museum, 44,002 are visitors in castles and other monuments, and 47,612 in archaeological parks. In the year 2019, the total number of visitors in museum, castle and archaeological parks is 1,065,081 visitors, showing an increase of 6.7 %, compared to the year 2018.

Tab.3 Visitors in museum, castle and other monuments, archeological parks

Cultural heritage institutions	Q.4-2019	Q.4-2018	Quarterly change in %	Year 2019	Year 2018	Yearly change In %
Museum	59,020	58,281	1.3	317,826	311,940	1.9
Castle and other monuments	44,002	38,423	14.5	322,395	308,656	4.5
Archaeological parks	47,612	37,026	28.6	424,860	377,845	12.4
Total number of visitors	150,634	133,730	12.6	1,065,081	998,441	6.7

In the fourth quarter of 2019, number of foreigner's visitors in museum, castle and archaeological parks was 74,109, showing an increase of 18.9 %, compared to the fourth quarter of 2018. In the year 2019, the total number of foreigner's visitors in cultural heritage institutions is 585,350 visitors, 13.2 % more, compared to the year 2018. During the quarters of 2019, a higher percentage of foreign visitors are observed across all cultural heritage institutions compared to the quarters of 2018, with the exception of the third quarter.

Fig.2 Foreigner's visitors in museum, caste and archaeological parks



For more information, please visit the website: <http://www.instat.gov.al/en/home.aspx>

National Library

In the fourth quarter of 2019, the number of library unit is 25,000 units, showing a decrease of 5.6 %, compared to the fourth quarter of 2018. The attendance at the National Library is 32,332, showing an increase of 35.7 %, compared to the same period of last year. In the National Library, in the fourth quarter of the year 2019, are displayed 1,180 were new titles and 4,185 new copies.

The number of library unit for the year 2019 is 99,741 publications, up by 11.8 % compared to the year 2018. In the year 2019, the number of attendees at the National Library has increased by 60.7 %, compared to the year 2018. In the year 2019, as the number of new titles and the number of new copies has increased.

Tab.4 Attendance and publications in the National Library

Indicators	Tr.4-2019	Tr.4-2018	Quarterly change	Year 2019	Year 2018	Yearly change
			in %			In %
Library Unit Service (Unit)	25,000	26,483	-5.6	99,741	89,212	11.8
Attendance	32,332	23,819	35.7	132,462	82,414	60.7
Culture and scientific activities	62	108	-42.6	149	269	-44.6
Number of new entries						
Number of new titles	1,180	1,031	14.5	4,075	2,895	40.8
Number of new exemplars	4,185	4,155	0.7	14,933	11,291	32.3

Methodology

Data on culture statistics are provided by the Ministry of Culture. In the central art and culture institutions are included: National Theater of Opera, Ballet and National Ensemble, National People's Theater, National Experimental Theater "Kujtim Spahivogli", National Art Gallery, National Circus.

In the total of museum, archaeological parks and castle are included institutions as:

Museum	Castle	Archaeological parks
National Historic Museum, Tiranë	Castle, Berat	National Park Butrint
Archaeological Museum, Durrës	Castle, Gjirokastër	Archaeological Park Apoloni
Museum of Independence, Vlorë	Castle, Portopalmos	Archaeological Park Bylis
Museum Gjergj Kastrioti, Krujë	Castle, Kaninë	Archaeological Park Shkodër
Ethnographic Museum, Krujë	Castle, Himarë	Archaeological Park Lezhë
Ethnographic Museum, Berat	Amphitheater	Archaeological Park Amantia
Iconographic Museum Onufri, Berat	Monastery of 40 Saints	Archaeological Park Orikum
Medieval Art Museum, Korçë	The Mesopotamian Monastery	Archaeological Park Finiq
Archaeological Museum, Korçë		Archaeological Park Antigoneë
Museum of Education, Korçë		
The Marubi National Museum		
National Tapping Museum "Leek House"		

Definition

Cultural heritage is the entirety of cultural, material and immaterial assets of an individual, group or society inherited from the past that preserves in the present, to convey future generations as part of a country's national wealth, which express values the identity, knowledge, traditions, beliefs, and cultural landscapes.

The museum is the institution for the preservation of memory, in the service of society and its development, open to the public, which conserves, studies, communicates and presents the movable and immovable heritage of mankind and its surrounding environment for the purpose of education, study, promotion and entertainment.

The monument of culture is the object or building of historical-cultural values, which is protected by the state.

For more information, please visit the website: <http://www.instat.gov.al/en/home.aspx>

Archaeological park is a territory with clear boundaries that includes important archeological evidence of overwhelming, subterranean and underwater landscapes and co-operatives of historic sites, cultural landscapes, organized with elements of a museum in nature.

Libraries are cultural and informative institutions that realize free access to information in any form that it has been deposited. They collect, preserve process and make available to their users their own collections containing information in the service of their training.

The average attendance of spectators for shows is calculated by calculating the total number of spectators in cultural institutions by the number of shows performed in these institutions.

Attendance in libraries is calculated by the number of library services / materials that each national library attendee receives.

Library materials include books, articles, maps, dissertations, and audiovisual materials.

New titles refers to those library materials that enter the library during a reference period.

New exemplars refer to the number of library units for each new title during a reference period.