

# Retail trade

## Third Quarter, 2019

**Tirana, December 12:** In the third quarter 2019, the turnover volume index is 124.4 increasing 3.9 %, compared to the same quarter 2018. This indicator seasonally adjusted, compared with the previous quarter increased 2.0%.

Fig. 1 Volume turnover index on retail trade



## The annual change of turnover volume index in retail trade

In the group of Retail trade, excluding the retail sales of motor fuel, turnover volume index increased 3.4 % compared to the same quarter of previous year.

In the group of “Food, beverages and tobacco in both specialized and non specialized stores”, the turnover volume index increased 1.8 %, compared with the same quarter of 2018.

The group of “Non-food products in specialized and non specialized stores”, the value of turnover index volume in the third quarter 2019 increased by 4.6 %, compared with the same quarter of the previous year.

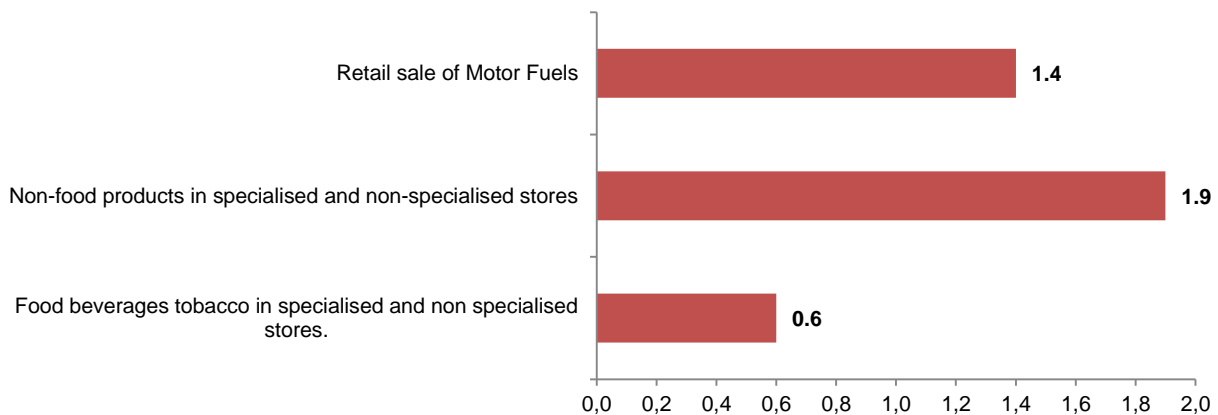
The group “Motor fuel retail sales in specialized stores”, the value of turnover volume index increased 5.0 %, compared with the same quarter of the previous year.

### **The contribution of the main groups to the volume of the retail trade turnover index**

Referring the annual comparison, the retail trade turnover volume index, in the third quarter 2019, is 3.9 %. All the groups have contributed positively.

The group “Food, beverages and tobacco in both specialized and non specialized stores” has contributed with +0.6 percentage point .The group “Non-food Products in specialized and non specialized stores” with +1.9 percentage point group and the group “Retail sale of motor fuel” with +1.4 percentage point.

**Fig. 3 Contribution of the main branches of the retail trade to real growth rate (q3-2019 / q3-2018).**



### **The quarterly change of turnover volume index seasonally adjusted**

In the third quarter 2019, the group of retail trade, excluding the retail sales of motor fuel, turnover volume index seasonally adjusted increased 1.6 % compared to second quarter 2019.

In the group of “Food, beverages and tobacco in both specialized and non specialized stores”, the turnover volume index seasonally adjusted decreased 0.1 %, compared to previous quarter.

In the group of “Non-food Products in specialized and non specialized stores”, the volume of turnover index seasonally adjusted in the third quarter 2019 increased 1.3%, compared to previous quarter.

In the group “Motor fuel retail sales in specialized stores”, the value of volume turnover index seasonally adjusted increased 5.0 %, compared to the second quarter 2019.

**Tab. 1 Annual turnover change on Retail Trade and Retail Sale of motor fuel seasonally unadjusted**

%

| NACE           | Economic activity  | III.18 / III.17 | IV.18 / IV.17 | I.19 / I.18 | II.19 / II.18 | III.19 / III.18 |
|----------------|--|-----------------|---------------|-------------|---------------|-----------------|
| <b>47</b>      | <b>Retail trade</b>  | <b>3.7</b>      | <b>2.6</b>    | <b>3.2</b>  | <b>3.5</b>    | <b>3.9</b>      |
| <b>47ex473</b> | <b>Retail trade, except retail sale of automotive fuel</b>                 | <b>3.1</b>      | <b>2.6</b>    | <b>3.5</b>  | <b>4.7</b>    | <b>3.4</b>      |
| 4711; 472      | Food, beverages and tobacco in both specialized and non specialized stores | 7.0             | 2.5           | 3.2         | 5.7           | 1.8             |
| 4719; 474-4778 | Non-food Products in specialized and non specialized stores                | 0.3             | 2.7           | 3.8         | 4.0           | 4.6             |
| <b>473</b>     | <b>Retail sale of motor fuel</b>   | <b>5.1</b>      | <b>2.8</b>    | <b>2.3</b>  | <b>0.5</b>    | <b>5.0</b>      |

**Tab. 2 Quarterly turnover change on Retail Trade and Retail Sale of motor fuel seasonally adjusted**

%

| NACE           | Economic activity  | III.18 / II.18 | IV.18 / III.18 | I.19 / IV.18 | II.19 / I.19 | III.19 / II.19 |
|----------------|--|----------------|----------------|--------------|--------------|----------------|
| <b>47</b>      | <b>Retail trade</b>  | <b>1.7</b>     | <b>-0.1</b>    | <b>-0.3</b>  | <b>2.1</b>   | <b>2.0</b>     |
| <b>47ex473</b> | <b>Retail trade, except retail sale of automotive fuel</b>                 | <b>3.0</b>     | <b>-0.0</b>    | <b>-0.8</b>  | <b>2.5</b>   | <b>1.6</b>     |
| 4711; 472      | Food, beverages and tobacco in both specialized and non specialized stores | 4.5            | -0.3           | -2.1         | 3.9          | -0.1           |
| 4719; 474-4778 | Non-food Products in specialized and non specialized stores                | 0.8            | -0.7           | 2.9          | 1.1          | 1.3            |
| <b>473</b>     | <b>Retail sale of motor fuel</b>   | <b>0.7</b>     | <b>-2.5</b>    | <b>0.8</b>   | <b>1.4</b>   | <b>5.0</b>     |

**Tab. 3 Annual monthly change on Retail Trade and Retail Sale of motor fuel seasonally unadjusted**

%

| NACE           | Economic activity  | 07-19 / 07-18 | 08-19 / 08-18 | 09-19 / 09-18 |
|----------------|--|---------------|---------------|---------------|
| <b>47</b>      | <b>Retail trade</b>  | <b>3.7</b>    | <b>5.1</b>    | <b>2.9</b>    |
| <b>47ex473</b> | <b>Retail trade, except retail sale of automotive fuel</b>                 | <b>3.5</b>    | <b>3.2</b>    | <b>3.7</b>    |
| 4711; 472      | Food, beverages and tobacco in both specialized and non-specialized stores | 0.7           | 3.0           | 1.4           |
| 4719; 474-4778 | Non-food Products in specialized and non specialized stores                | 5.5           | 3.2           | 5.3           |
| <b>473</b>     | <b>Retail sale of motor fuel</b>   | <b>4.0</b>    | <b>9.6</b>    | <b>0.8</b>    |

**Tab. 4 Monthly change on Retail Trade and Retail Sale of motor fuel seasonally adjusted**

| NACE           | Economic activity  | %              |               |               |
|----------------|--|----------------|---------------|---------------|
|                |  | 07 -19 / 06-19 | 08-19 / 07-19 | 09-19 / 08-19 |
| <b>47</b>      | <b>Retail trade</b>  | <b>0.9</b>     | <b>2.1</b>    | <b>-2.9</b>   |
| <b>47ex473</b> | <b>Retail trade, except retail sale of automotive fuel</b>                 | <b>1.2</b>     | <b>2.7</b>    | <b>-3.4</b>   |
| 4711; 472      | Food, beverages and tobacco in both specialized and non specialized stores | -2.3           | 5.1           | -3.1          |
| 4719; 474-4778 | Non-food Products in specialized and non specialized stores                | 2.0            | -0.8          | -0.9          |
| <b>473</b>     | <b>Retail sale of motor fuel</b>   | <b>0.5</b>     | <b>2.8</b>    | <b>-3.0</b>   |

**Tab. 5 Monthly value and volume indices on Retail Trade (seasonally unadjusted)**

2015=100

| NACE Rev. 2 |       | Group 47 |       |        |       |        |       |        |  |
|-------------|-------|----------|-------|--------|-------|--------|-------|--------|--|
| Year        | 2016  |          | 2017  |        | 2018  |        | 2019  |        |  |
| Month       | Value | Volume   | Value | Volume | Value | Volume | Value | Volume |  |
| 1           | 91.2  | 93.4     | 93.2  | 92.7   | 97.2  | 95.1   | 102.3 | 98.8   |  |
| 2           | 87.9  | 90.1     | 93.3  | 92.6   | 96.6  | 94.0   | 100.1 | 96.3   |  |
| 3           | 96.2  | 98.3     | 104.8 | 103.3  | 105.6 | 102.5  | 110.0 | 105.9  |  |
| 4           | 96.2  | 98.8     | 100.5 | 99.6   | 104.6 | 102.0  | 109.0 | 104.9  |  |
| 5           | 100.4 | 103.4    | 104.5 | 104.5  | 109.6 | 107.3  | 114.7 | 111.3  |  |
| 6           | 101.9 | 104.6    | 107.2 | 107.9  | 112.1 | 109.6  | 117.1 | 113.8  |  |
| 7           | 109.7 | 112.5    | 114.9 | 115.7  | 121.3 | 118.7  | 126.3 | 123.1  |  |
| 8           | 119.8 | 122.2    | 120.9 | 121.3  | 130.7 | 127.5  | 137.7 | 134.0  |  |
| 9           | 106.5 | 108.2    | 109.0 | 109.2  | 116.0 | 112.9  | 119.6 | 116.2  |  |
| 10          | 106.2 | 107.6    | 114.7 | 114.6  | 116.6 | 113.0  |       |        |  |
| 11          | 105.5 | 106.9    | 106.4 | 105.9  | 113.9 | 110.6  |       |        |  |
| 12          | 131.7 | 132.1    | 127.8 | 126.3  | 136.4 | 132.3  |       |        |  |

For more information please visit our website: <http://www.instat.gov.al/en/themes.aspx>

**Tab. 6 Monthly value and volume indices on Retail Sale of motor fuel (seasonally unadjusted)**

2015=100

| NACE Rev. 2 |       | Group 4730 |       |        |       |        |       |        |  |
|-------------|-------|------------|-------|--------|-------|--------|-------|--------|--|
| Year        | 2016  |            | 2017  |        | 2018  |        | 2019  |        |  |
| Month       | Value | Volume     | Value | Volume | Value | Volume | Value | Volume |  |
| 1           | 80.1  | 88.9       | 88.9  | 93.9   | 89.3  | 91.2   | 97.0  | 98.1   |  |
| 2           | 73.3  | 84.1       | 84.4  | 89.1   | 87.2  | 89.3   | 86.3  | 87.2   |  |
| 3           | 83.6  | 95.4       | 93.5  | 96.6   | 95.1  | 97.3   | 98.2  | 98.7   |  |
| 4           | 83.0  | 95.5       | 90.3  | 93.2   | 96.0  | 98.2   | 97.1  | 97.1   |  |
| 5           | 89.2  | 100.1      | 92.9  | 96.6   | 103.8 | 104.4  | 102.5 | 102.6  |  |
| 6           | 93.2  | 101.6      | 96.8  | 101.9  | 105.5 | 105.2  | 109.3 | 109.6  |  |
| 7           | 105.1 | 113.8      | 106.7 | 112.3  | 117.1 | 116.5  | 120.7 | 121.2  |  |
| 8           | 120.6 | 130.4      | 118.7 | 124.9  | 127.7 | 126.7  | 138.3 | 138.8  |  |
| 9           | 95.9  | 103.8      | 93.1  | 97.9   | 110.1 | 109.1  | 109.5 | 110.0  |  |
| 10          | 99.4  | 106.0      | 96.6  | 101.4  | 107.3 | 103.7  |       |        |  |
| 11          | 94.7  | 100.8      | 93.3  | 95.8   | 102.1 | 98.6   |       |        |  |
| 12          | 105.4 | 111.8      | 102.4 | 104.8  | 109.5 | 108.4  |       |        |  |

# Methodology

## Information

In the wake of its efforts to standardizing and approaching the retail trade statistics to the standards of EU statistics, the publication of the Turnover Index Volume of Retail Trade activity has passed through some methodological changes, such as:

- Indices on Retail trade and Sale and Repair of Motor vehicles from first quarter 2019 will be calculated with base year 2015=100.
- Weights are calculated based on Retail trade and Sale and Repair of Motor Vehicles survey in 2018, realized from INSTAT. The turnover is estimated in products level.
- The codification used is CPA (Classification of Products by Activity). The main groups are in accordance with main groups used in Consumer Price Index.

## Information on the observation

**Purpose** – The quarterly statistical Retail Trade data collected by the comital enterprises show the most recent performance and developments of the economic indicators in the retail trade store units, as well as the consume scale.

The legal base of compilation methodology of Retail Trade indicators is, Council Regulation (EC) No 1165/98, of 19 May 1998 concerning Short-Term Statistics

**Scope** - Based on the main activity in the survey there are included:

- Retail trade activity, group 47-NACE-Rev. 2.2 (excluding the group 47.79-47.99)
- Retail sale of motor fuel, group 473-NACE Rev.2

The groups are evaluated on the base of percentage that each product or goods had covered in the total Turnover. For the codification of products the Nomenclature of the Products was used.

The main groups of are in accordance with the corresponding groups in the Index of Prices of Consume. The indexes are compared to the base year 2015=100.

**Weights** – The structure of weights on Retail Trade

Food, beverages and tobacco in both specialized and non-specialized stores 28.8%

Non-food Products in specialized and non specialized stores 42.5%

Retail sale of motor fuel 28.3 %

For more information please visit our website: <http://www.instat.gov.al/en/themes.aspx>

**Model** - The enterprises are selected from the Statistical Register of Enterprises. The enterprises with 1-4 employees are surveyed by sample survey, whereas the enterprises with 5 and more employees are surveyed exhaustively.

**Data collection** - The data are collected directly from enterprises. The interviewers collect the data from enterprises. The questionnaire is filled from the interviewers.

**Indicators** – The indicators are given in Index form, the quarterly changes are given in percentage, whereas the annual changes are given in percentage with reference to the base year, actually 2015=100. The data do not present absolute values.

**Indexes** – The indexes show the changes in time of a given variable, or of a group of variables. The Index Volume is calculated through the Laspeyres Formula. In order to avoid the prices impact, the indexes are deflated with the index of the price consume for the respective periods and corresponding groups.

**The annual change in percentage** - it measures in percentage the change of economic indicators of the actual quarter compared with the same quarter of the previous year.

**The quarterly change in percentage** – it measures in percentage the change of economic indicators of the actual quarter against compared with the previous quarter of the same year.

**Revision** – Indexes may be revised due to several reasons: additional information, the methodological changes, or revaluation of the used coefficients etc.

**Definition of the main indicators** – Turnover is the total amount realized by enterprises during the month from the selling of goods, selling of own products and services excluded VAT.

Number of persons working includes all persons who actually work in the observed unit. There are included, owners and co-owners and family members that helps in the activity and employees in the end of the quarter.

### **Seasonal and calendar adjustment**

Seasonal and calendar adjustment of monthly / quarterly time series of retail trade is done by using JDemetra+ 2.1 version software. The chosen model for the decomposition of time series is X-12 ARIMA, under specification X-13, the span of time series is from 2005 to 2019. X-12 ARIMA model is totally based in moving average. In all time series is applied the multiplicative decomposition and the direct approach. In calendar adjustment is applied the specification of trading day and a national calendar, considering both moving and fix national holidays. During the process of seasonal adjustment are treated even the special case occurred during the time series span, identified by software as outlier.