

Short Term Statistics

Fourth Quarter 2014

Tirana, 27 March: INSTAT publish “Short term statistics of economical enterprise” data of fourth quarter 2014 according the Nomenclature of Economical Activities, NACE Rev. 2, updated base from 2005 to 2010. The questionnaire covers: “Industry” (where are included “Mining and Quarrying” and “Manufacturing”), “Electricity, gas, steam”, “Water supply; sewerage, waste management and remediation activities” ,“Construction”, and “Services” (included the activity of Trade, Transport and storage, Hotels, Information and communication, Architectural and engineering activities, Travel agency) (see: Methodological elucidations pg.21).

In the fourth quarter 2014, the volume turnover index was 128.9 % against the base year (2010=100).

The annual change of this index presents an increase 2.6 % in the activities covered in the quarterly survey, compared with the fourth quarter 2013. This change on the same quarter 2013 was increase

4.4 %. This increase was mainly indicated by the activities of “Electricity, gas, steam”, “Construction” and “Hotels”, respectably 30.6 %, 19.3 %, and 19.8 %.

In the activity of “*Industry*”, the volume turnover index presents a decrease 4 %, indicated mainly by the activity of “Mining and quarrying” by 16.2 %.

The negative change of 1.4 % of the volume turnover index in the activity of “*Services*” compared with fourth quarter 2013 is mainly indicated by the fallen of the percentage change of activities: “Information and communication” and “Transport and storage”.

The quarterly change of volume turnover index, in the fourth quarter 2014, presents an increase by 2 % compared with the previous quarter. This increase is mainly indicated by “Electricity, gas, steam” and “Construction” respectably 25.8 % and 24.6 %. In the activity of “*Industry*”, the volume turnover index decrease 6.5 %, indicated mainly by the activity of “Manufacturing and quarrying” with a decrease 13.6 %.

In this quarter in the activity “*Services*” compared with the previous quarter, the decrease 1.6 % is mainly indicated by: “Hotels” by 10.9 % and “Transport and storage” 8.3 %.

For release 27/03/2015

Fig. 1 Indexes of turnover in volume

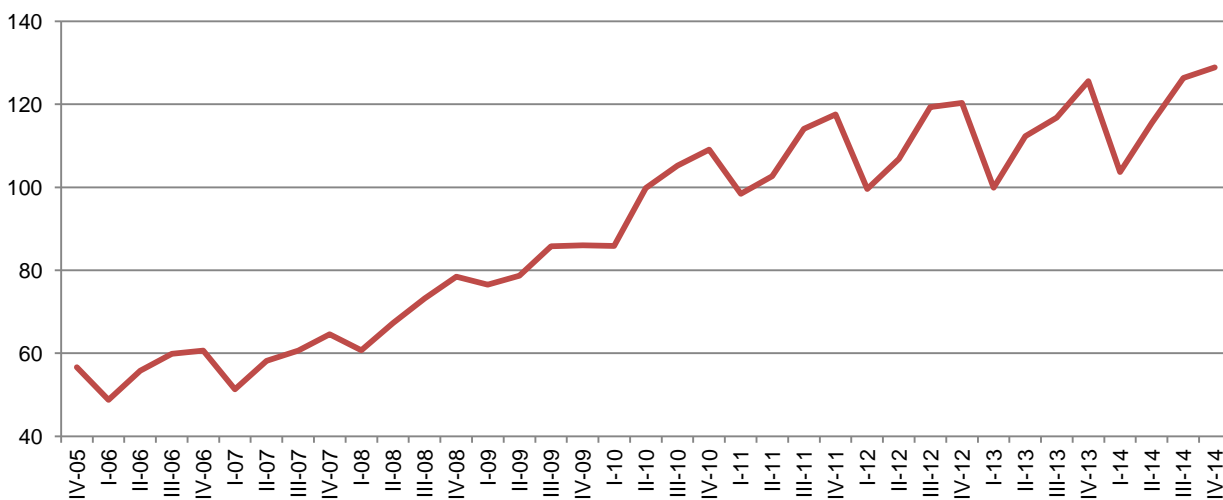
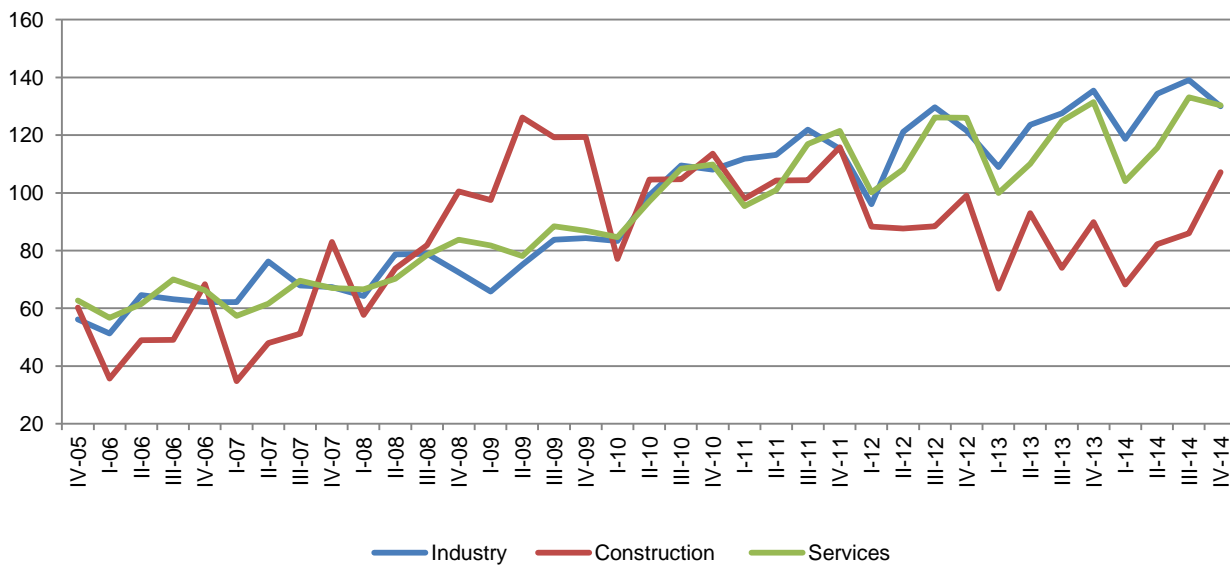


Fig. 2 Indexes of turnover in Industry, Construction and Services



Tab. 1 Annual change of turnover volume index, Total activities

(2010=100)

(%)

Code NACE Rev.2	Description	IV - 13 IV - 12	I - 14 I - 13	II - 14 II - 13	III - 14 III - 13	IV - 14 IV - 13
	Total by economic activities	4,4	3,8	2,8	8,2	2,6
B+C	Industry	11,4	8,9	8,6	9,0	-4,0
B	Mining and quarrying	68,4	22,1	22,9	19,1	-16,2
C	Manufacturing Industry	-1,4	4,6	3,7	5,7	0,8
D	Electricity, gas, steam	13,8	-3,1	3,7	14,4	30,6
E	Water supply; sewerage, waste management and remediation activities	40,0	-4,2	7,7	-5,7	-6,2
F	Construction	-9,3	2,1	-11,6	16,2	19,3
G - N	Services	4,3	4,1	4,5	5,4	-1,4
G	Trade	5,8	6,7	6,2	7,8	0,4
H (49-53)	Transport and storage	-22,9	-47,8	-43,3	-44,6	-15,0
I (551)	Hotels	-22,0	-4,7	16,3	24,8	19,8
J (58-62)	Information and communication	4,5	8,8	19,2	11,8	-23,1
M (71)	Architectural and engineering activities	20,2	16,3	-12,4	14,1	56,2
N (79)	Travel agency	41,4	30,6	37,0	35,5	17,1

Tab. 2 Quarterly change of turnover volume index, Total activities

(2010=100)

(%)

Code NACE Rev.2	Description	IV - 13 III - 13	I - 14 IV - 13	II - 14 I - 14	III - 14 II - 14	IV - 14 III - 14
	Total by economic activities	7,5	-17,5	11,4	9,4	2,0
B+C	Industry	6,2	-12,4	13,2	3,6	-6,5
B	Mining and quarrying	22,8	-15,7	17,4	-2,1	-13,6
C	Manufacturing Industry	0,9	-11,3	11,5	5,9	-3,8
D	Electricity, gas, steam	10,2	13,3	0,4	-8,8	25,8
E	Water supply; sewerage, waste management and remediation activities	1,5	-13,1	8,2	-1,1	1,0
F	Construction	21,4	-24,0	20,4	4,7	24,6
G - N	Services	5,2	-20,8	10,4	14,6	-1,6
G	Trade	6,1	-20,3	11,7	14,1	-1,2
H (49-53)	Transport and storage	-40,2	-36,4	19,6	21,7	-8,3
I (551)	Hotels	-7,2	-16,6	39,1	15,8	-10,9
J (58-62)	Information and communication	34,1	-26,6	-1,0	14,7	-7,7
M (71)	Architectural and engineering activities	-7,2	15,1	-16,1	27,3	27,0
N (79)	Travel agency	14,2	-14,9	19,7	16,6	-1,4

Industry, Electricity and Water

The volume turnover in the fourth quarter 2014 decreased by 4 % in "Industry" (where are included "Mining and Quarrying" and "Manufacturing") compared with the fourth quarter 2013. In the fallen of "Industry" the main impact is given by "Mining and quarrying Industry" with 16.2 %.

Referred the same comparable period in the section "Electricity, gas, steam" the volume turnover increased by 30.6 % while in the section "Water supply; sewerage, waste management and remediation activities" this indicator decreased by 6.2 %.

Quarterly change of the volume turnover presents a decrease by 6.5 % in "Industry" compared with the third quarter 2014. The main impact is given by "Mining and quarrying" with 13.6 %.

The volume turnover indicator increased by 25.8 % in "Electricity, gas, steam" and "Water supply; sewerage, waste management and remediation activities" while increased by 1 %.

The industrial production volume in the fourth quarter 2014 presents a decrease by 7.2 % in the activities covered by "Industry" sector compared with the same quarter **of previous year**. The main impact is given by the activity "Mining and quarrying" with a decrease by 21.9 %.

While the production volume of "Electricity, gas, steam" and "Water supply; sewerage, waste management and remediation activities" increase by 19 % and 2.2 % referred the same comparable period.

The industrial production volume in the fourth quarter 2014 presents a decrease by 9 % in the activities covered by "Industry" compared with **the previous quarter**. The main impact was given by activity "Mining and quarrying" with 18.6 %.

The industrial production volume during the fourth quarter 2014 is increased in "Electricity, gas, steam" by 48.6 % and "Water supply; sewerage, waste management and remediation activities" by 0.4 %, compared with the third quarter 2014.

The number of employees in "Industry" sector (where are included "Mining and Quarrying" and "Manufacturing") increased by 16.7 % from fourth quarter 2013 to fourth quarter 2014, mainly has impact the increase of this indicator in "Manufacturing industry" by 17.3 %.

Activities as "Electricity, gas, steam" and "Water supply; sewerage, waste management and remediation activities", this indicator indicate an increase, respectable by 9.3 % and 2.2 %.

The number of employees in “Industry” sector decreased by 0.5 %, compared with the previous quarter where the “Manufacturing industry” and “Mining and quarrying” has the main impact by 0.5 % and 0.4 %.

The number of employees in “Electricity, gas, steam” increased by 1.8 % and in section “Water supply; sewerage, waste management and remediation activities” this indicator presents a decrease by 2.7 %.

“Wages” level is indicated by an increase by 13.1 % in “Industry”, compared with the same quarter of **the previous year**, mainly indicated from “Manufacturing industry” 15.9 %.

In “Electricity, gas, steam”, for the same comparable period, wages increased by 14.9 %, while in the “Water supply; sewerage, waste management and remediation activities” decrease 8.8 %.

“Wages” level is indicated by an increased in “Industry” by 2.5 % compared with the third quarter 2014, mainly this increase is from “Mining and quarrying” by 3.5 %.

In “Electricity, gas, steam” wages increase by 3.1 %, while in the “Water supply; sewerage, waste management and remediation activities” this indicator presents a decrease by 1.6 %.

Fig. 3 Turnover and Volume production, Industry (Extracting and Manufacturing)

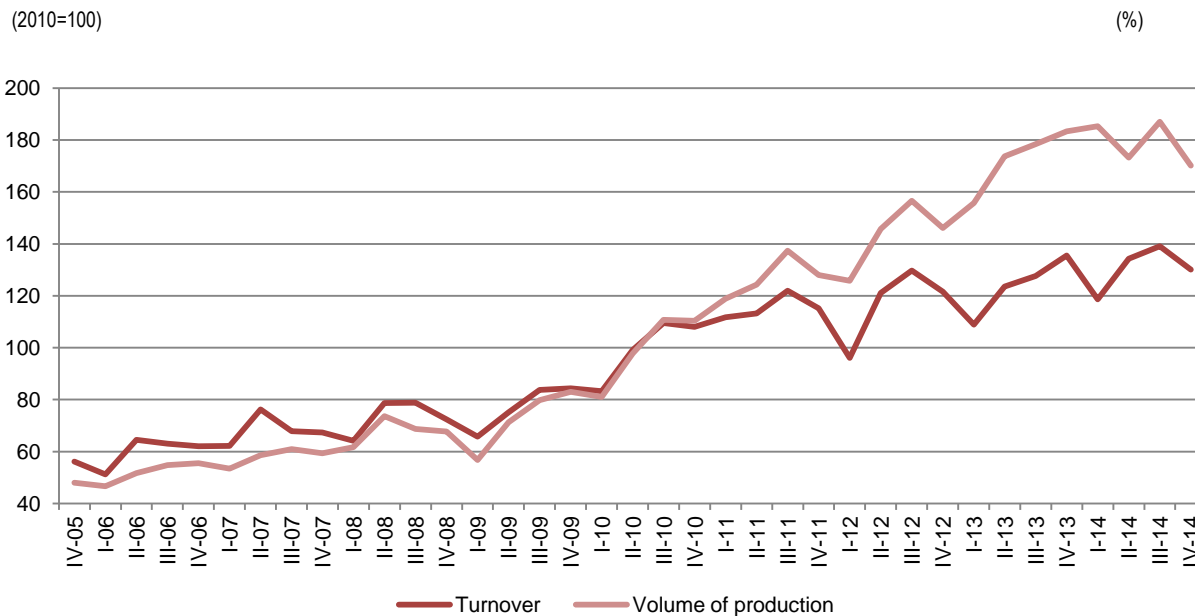


Fig. 4 Indexes of turnover volume in Mining and Quarrying; Manufacturing; Electricity, gas and steam; Water supply

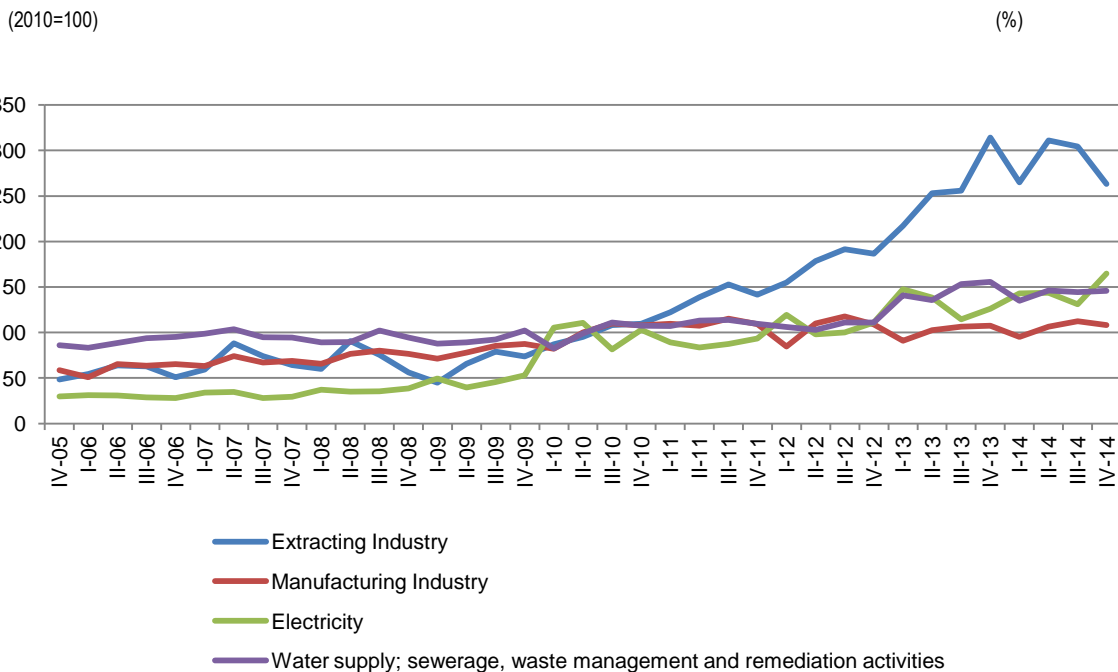
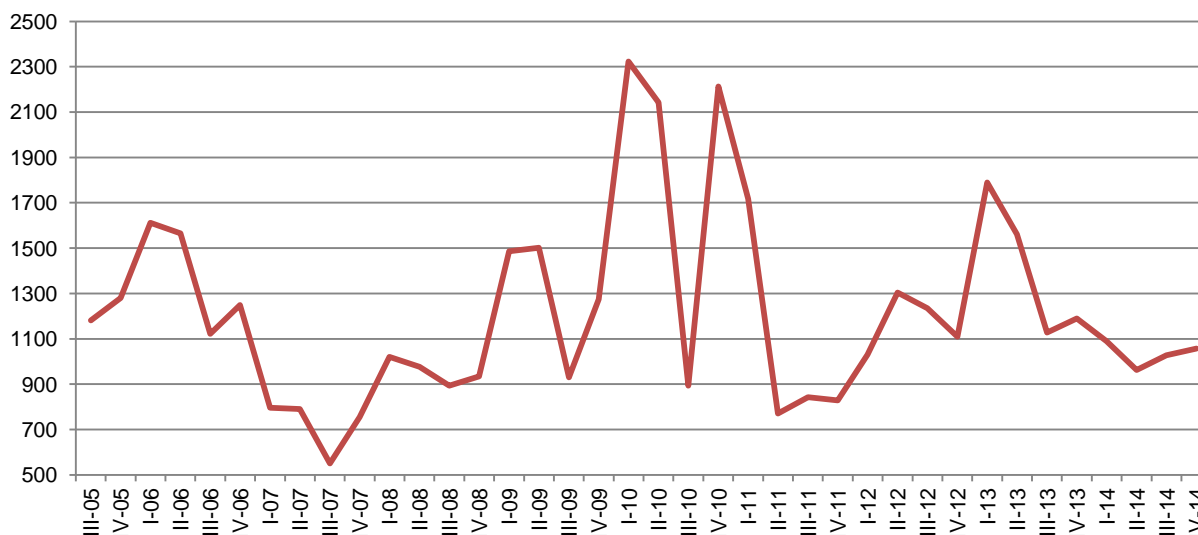


Fig. 5 Production of Electricity (000/kw-hours)



Tab. 3 Annual change of the turnover volume index in Industry, Electricity and Water

(2010=100)

(%)

Section	NACE Rev.2	Economic activity	IV - 13	I - 14	II - 14	III - 14	IV - 14
			IV - 12	I - 13	II - 13	III - 13	IV - 13
B-C	Maj-33	Industry	11,4	8,9	8,6	9,0	-4,0
B	09-Maj	Mining and quarrying	68,4	22,1	22,9	19,1	-16,2
C	Tet-33	Manufacturing Industry	-1,4	4,6	3,7	5,7	0,8
D	35	Electricity, gas, steam	13,8	-3,1	3,7	14,4	30,6
E	36-39	Water supply; sewerage, waste management and remediation activities	40,0	-4,2	7,7	-5,7	-6,2

Tab. 4 Quarterly change of the turnover volume index in Industry, Electricity and Water

(2010=100)

(%)

Section	NACE Rev.2	Economic activity	IV - 13	I - 14	II - 14	III - 14	IV - 14
			III - 13	IV - 13	I - 14	II - 14	III - 14
B-C	05-33	Industry	6,2	-12,4	13,2	3,6	-6,5
B	05-09	Mining and quarrying	22,8	-15,7	17,4	-2,1	-13,6
C	10-33	Manufacturing Industry	0,9	-11,3	11,5	5,9	-3,8
D	35	Electricity, gas, steam	10,2	13,3	0,4	-8,8	25,8
E	36-39	Water supply; sewerage, waste management and remediation activities	1,5	-13,1	8,2	-1,1	1,0

Tab. 5 Annual change of the industrial production index Industry, Electricity and Water

(2010=100)

(%)

Section	NACE Rev.2	Economic activity	IV - 13	I - 14	II - 14	III - 14	IV - 14
			IV - 12	I - 13	II - 13	III - 13	IV - 13
B-C	05-33	Industry	25,5	19,1	-0,2	4,8	-7,2
B	05-09	<i>Mining and quarrying</i>	57,1	17,6	-1,2	8,2	-21,9
C	10-33	<i>Manufacturing Industry</i>	-0,4	18,9	-0,1	1,3	10,2
D	35	Electricity, gas, steam	87,5	-18,0	-28,9	8,7	19,0
E	36-39	Water supply; sewerage, waste management and remediation activities	6,8	-6,7	19,5	-11,4	2,2

Tab. 6 Quarterly change of the industrial production index Industry, Electricity and Water

(2010=100)

(%)

Section	NACE Rev.2	Economic activity	IV - 13	I - 14	II - 14	III - 14	IV - 14
			III - 13	IV - 13	I - 14	II - 14	III - 14
B-C	05-33	Industry	2,8	1,1	-6,5	7,9	-9,0
B	05-09	<i>Mining and quarrying</i>	12,9	-10,9	-4,6	12,7	-18,6
C	10-33	<i>Manufacturing Industry</i>	-8,5	15,9	-8,1	4,0	-0,5
D	35	Electricity, gas, steam	35,7	14,7	24,6	-44,0	48,6
E	36-39	Water supply; sewerage, waste management and remediation activities	-12,9	-23,0	30,8	1,1	0,4

Tab. 7 Annual change of the number of employees index in Industry, Electricity and Water

(2010=100)

(%)

Section	NACE Rev.2	Economic activity	IV - 13	I - 14	II - 14	III - 14	IV - 14
			IV - 12	I - 13	II - 13	III - 13	IV - 13
B-C	05-33	Industry	10,2	15,8	21,4	20,7	16,7
B	05-09	<i>Mining and quarrying</i>	17,9	2,9	-0,6	10,1	12,8
C	10-33	<i>Manufacturing Industry</i>	8,9	17,9	25,4	22,6	17,3
D	35	Electricity, gas, steam	12,0	10,6	8,8	6,4	9,3
E	36-39	Water supply; sewerage, waste management and remediation activities	14,8	1,9	5,8	1,6	-2,2

Tab. 8 Quarterly change of the number of employees index in Industry, Electricity and Water

(2010=100)

(%)

Section	NACE Rev.2	Economic activity	IV - 13	I - 14	II - 14	III - 14	IV - 14
			III - 13	IV - 13	I - 14	II - 14	III - 14
B-C	05-33	Industry	2,9	13,5	2,9	0,4	-0,5
B	05-09	<i>Mining and quarrying</i>	-2,7	3,1	0,4	9,4	-0,4
C	10-33	<i>Manufacturing Industry</i>	4,0	15,1	3,3	-0,9	-0,5
D	35	Electricity, gas, steam	-0,9	7,9	0,6	-1,1	1,8
E	36-39	Water supply; sewerage, waste management and remediation activities	1,0	-0,6	2,0	-0,8	-2,7

Tab. 9 Annual change of the wage index in Industry, Electricity and Water

(2010=100)

(%)

Section	NACE Rev.2	Economic activity	IV - 13	I - 14	II - 14	III - 14	IV - 14
			IV - 12	I - 13	II - 13	III - 13	IV - 13
B-C	05-33	Industry	30,3	17,4	22,3	19,8	13,1
B	05-09	<i>Mining and quarrying</i>	69,1	15,4	20,4	21,1	9,3
C	10-33	<i>Manufacturing Industry</i>	13,1	17,6	22,9	19,1	15,9
D	35	Electricity, gas, steam	14,5	23,8	24,3	13,1	14,9
E	36-39	Water supply; sewerage, waste management and remediation activities	33,0	-5,8	5,9	7,9	-8,8

Tab. 10 Quarterly change of the wage index in Industry, Electricity and Water

(2010=100)

(%)

Section	NACE Rev.2	Economic activity	IV - 13	I - 14	II - 14	III - 14	IV - 14
			III - 13	IV - 13	I - 14	II - 14	III - 14
B-C	05-33	Industry	8,5	2,4	5,6	2,0	2,5
B	05-09	<i>Mining and quarrying</i>	14,6	-10,1	9,3	7,5	3,5
C	10-33	<i>Manufacturing Industry</i>	4,8	9,9	4,0	-0,5	2,0
D	35	Electricity, gas, steam	1,6	8,1	6,1	-2,9	3,1
E	36-39	Water supply; sewerage, waste management and remediation activities	16,5	-10,2	10,2	-6,4	-1,6

Construction

Turnover volume index, in the Construction activity, in the fourth quarter 2014 increased by 19.3 % compared with the fourth quarter 2013, and Construction volume index increased by 21.1 %.

The number of employees in “Construction” activity in the fourth quarter 2014 increased by 24.7 % compared with the fourth quarter 2013 and the wages increased by 16.3 % during the same period.

In the fourth quarter 2014, turnover volume index increased by 24.6 % compared with the third quarter 2014 and the construction volume index increased by 23.5 % during the same period.

The number of employees in “Construction” activity in the fourth quarter 2014 increased by 3.6 % compared with the third quarter 2014 and the wages increased by 7.2 % during the same period.

Fig. 6 Indices of deflated turnover, deflated construction volume



Tab. 11 Annual changes of the construction indicators index

(2010=100) (%)

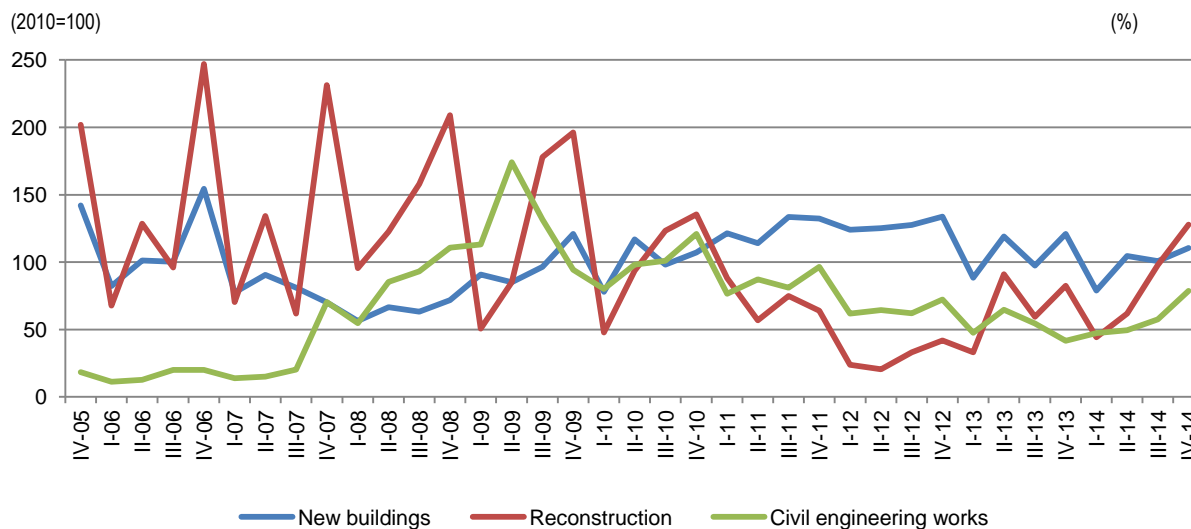
NACE Rev.2	Indicators	IV - 13	I - 14	II - 14	III - 14	IV - 14
		IV - 12	I - 13	II - 13	III - 13	IV - 13
41-43	Turnover volume	-9,3	2,1	-11,6	16,2	19,3
	Construction volume	-10,1	1,3	-14,7	13,8	21,1
	Number of employees	2,0	8,5	15,6	20,7	24,7
	Wages	20,5	0,5	9,7	3,8	16,3

Tab. 12 Quarterly changes of the construction indicators index

(2010=100) (%)

NACE Rev.2	Indicators	IV - 13	I - 14	II - 14	III - 14	IV - 14
		III - 13	IV - 13	I - 14	II - 14	III - 14
41-43	Turnover volume	21,4	-24,0	20,4	4,7	24,6
	Construction volume	16,0	-26,3	22,0	9,2	23,5
	Number of employees	0,2	14,5	0,3	4,9	3,6
	Wages	-4,3	3,8	1,0	3,4	7,2

Fig. 7 Construction volume indices. New buildings, Reconstruction, Civil engineering works



Services

In the fourth quarter 2014, the volume turnover index in activity of "Services" decreased by 1.4 % compared with the fourth quarter 2013. This decrease is mainly indicated from: the activity of the "Information and communication" and "Transport and storage" where is also included the "Post" activity. The activity of "Transport and storage" where is also included the "Post" activity, the volume turnover index in the fourth quarter 2014 presents a decrease by 15 % compared with the fourth quarter 2013.

In the fourth quarter 2014, the volume turnover index in activity of "Services" decrease by 1.6 % compared with the previous quarter. This decrease is mainly indicated from: "Transport and storage" by 8.3 %, "Wholesale" by 2.2 %, "Travel agencies" by 1.4 % etc.. In activity "Architectural and engineering activities" the volume turnover index presents an increase 27 %.

In the fourth quarter 2014, the number of employees' index in the "Services" activity increased by 12.8 % compared with the same period of previous year. Main impact is from "Hotels" by 26.5 % and "Wholesale" by 15.1 %, etc..

In the fourth quarter 2014, the number of employees' index in the "Services" activity increase by 0.4 % compared with the third quarter 2014. Main impact is from the activity of "Architectural and engineering activities" by 9.2 %, "Wholesale, retail sale and repair of motor vehicles" by 7.3. While the activity of "Hotels" presents a decrease in this indicator by 6.6 %.

In the "Services" activity in fourth quarter 2014, the wage index increased with 6.3 % compared with the same period of previous year. Main impact is from "Hotels" by 23.4 %, "Wholesale" by 16.7 % and "Information and communication" by 12.3 %.

In the fourth quarter 2014 in the "Services" activity, the wage index represents an increase by 1.7 % compared with the third quarter 2014. Main impact is from "Information and communication" by 16.9 %, "Travel Agencies" by 8.4 % and "Wholesale, retail sale and repair of motor vehicles" by 5.3 %.

Wholesale and retail sale and repair of motor vehicles and Wholesale

In the fourth quarter 2014, in activity "Wholesale and retail sale and repair of motor vehicles" the volume turnover index increased by 10.5 %, while in the activity "Wholesale" this indicator decreased 0.8 % compared with the fourth quarter 2013.

Quarterly change, in the activity “Wholesale and retail sale and repair of motor vehicles”, the volume turnover index presents a decrease by 0.5 % and 2.2 % in the activity of “Wholesale” compared with the third quarter 2014.

In the fourth quarter 2014, in activity “Wholesale”, the annual change of index of the number of employees increased by 15.1 % compared with the fourth quarter 2013.

Compared with **the third quarter** 2014, this indicator presents an increase by 0.1 %.

In the activity “Wholesale” in the fourth quarter 2014, the wage index increased by 16.7 % compared with the same period **of previous year**, while “Wholesale and retail sale and repair of motor vehicles” decreased by 1.2 %.

In quarterly change, wages in “Wholesale” activity decrease by 0.4 % compared with the third quarter 2014, while “Wholesale and retail sale and repair of motor vehicles” increased by 5.3 %.

Transport and Storage (included the “Post” activity)

In the activity “Transport and Storage”, included “Post” activity, the volume turnover index decreased by 15 % in the fourth quarter 2014 compared with the fourth quarter 2013, as the result of the negative impact of air transport. The quarterly change of volume turnover index in the “Post” activity is increased by 6.5 %.

Quarterly change of the volume turnover index, in activity of the “Transport and Storage”, included “Post” activity decreased by 8.3 %. In the postal activity quarterly change presents an increase with 12.9 % of the volume turnover index compared with third quarter 2014.

The number of employees index in activity “Transport and Storage” included “Post” activity presents an increase by 0 %.

The annual change of wage index presents a decrease by 22.2 %.

The quarterly change of wage index is decreased 17.1 % in “Transport and Storage”.

Hotels

In section “Hotels” activity, the volume turnover index increased by 19.8 % in the fourth quarter 2014 compared with the fourth quarter 2013.

The quarterly change of the volume turnover index represents a decrease by 10.9 % in “Hotels” activity compared with the third quarter 2014

In the fourth quarter 2014, in “Hotels” activity, annual change of the number index of employees represents an increase by 26.5 %. Quarterly change of the number index of employees represents a decrease by 6.6 %

In the fourth quarter 2014, in “Hotels” activity, the wage index represents an increase by 23.4 % compared with the fourth quarter 2013 and the wage index represents a decrease by 5.5 % compared with the third quarter 2014.

Information and Communication

In the “Information and communication” activity, the volume turnover index, decrease by 23.1 % in the fourth quarter 2014 compared with fourth quarter 2013.

The quarterly change of the volume turnover index in “Information and communication” activity represents a decrease by 7.7 % compared with the previous quarter.

In the fourth quarter 2014, in “Information and communication” activity, **annual changes** of index the number of employees represent an increase by 4.4 %.

In the fourth quarter 2014, in “Information and communication” activity **quarterly change** of the number of employees index represent a decreased by 4.4 %.

In the fourth quarter 2014, in the “Information and communication” activity, annual change of the wage index increased 12.3 % compared with the fourth quarter 2013 % and the wage index represents a decrease by 16.9 % compared with the third quarter 2014.

Architectural and Engineering activities

In the section “Architectural and engineering” activity the volume turnover index increased by 56.2 % in the fourth quarter 2014 compared with fourth quarter 2013.

The quarterly change of the volume turnover index represents an increase by 27 % compared with the previous quarter.

In the fourth quarter 2014, in “Architectural and Engineering” activity, **annual change** of the number of employees index increased by 3.8 % and **quarterly change** of the number of employees index increased by 9.2 %.

Annual change of the wage index represents a decrease by 9.6 % compared with the fourth quarter 2013.

In the enterprises of this activity, the wage index increased by 3.9 % compared with third quarter 2014.

Travel agencies

In the section "Travel agencies" activity, the volume turnover index increased by 17.1 % in the fourth quarter 2014 compared with fourth quarter 2013.

The quarterly change of the volume turnover index represents a decrease by 1.4 % compared with the previous quarter.

In the fourth quarter 2014, in "Travel agencies" activity, **annual change** of the number of employees index represents an increased by 1.2 % compared with the fourth quarter 2013. The number of employees index represents an increased by 0.9 % compared with previous quarter.

The wage index represents a decrease by 5.7 % compared with the fourth quarter 2013 and an increase by 8.4 % compared with previous quarter.

Tab. 13 Annual change of the turnover volume index in Services

(2010=100)

(%)

Code NACE Rev.2	Economic activity description	IV - 13	I - 14	II - 14	III - 14	IV - 14
		IV - 12	I - 13	II - 13	III - 13	IV - 13
G-N	Services	4,3	4,1	4,5	5,4	-1,4
G(45)	Wholesale and retail sale of motorvehicles and repair of motorvehicles	-3,1	-2,7	0,0	8,3	10,5
G(46)	Wholesale trade	7,2	7,1	6,5	8,0	-0,8
H(49-53)	Transport and storage	-22,9	-47,8	-43,3	-44,6	-15,0
I(5500)	Hotels	-22,0	-4,7	16,3	24,8	19,8
J(58, 61, 62)	Information and communication	4,5	8,8	19,2	11,8	-23,1
M(71)	Architectural and engineering activities	20,2	16,3	-12,4	14,1	56,2
N(79)	Travel agency	41,4	30,6	37,0	35,5	17,1

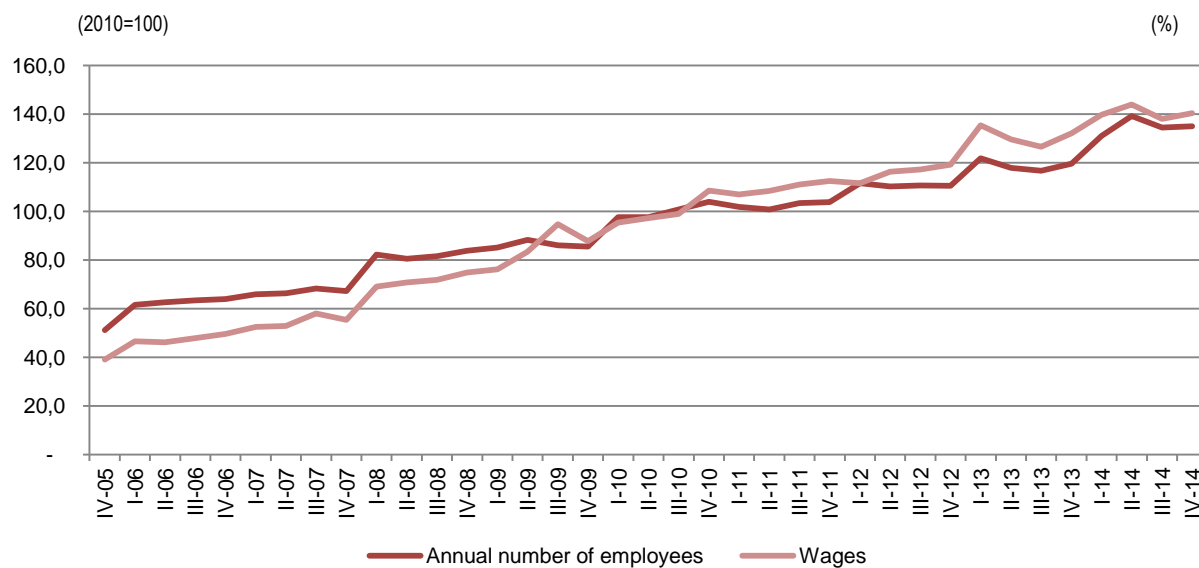
Tab. 14 Quarterly change of the turnover volume index in Services

(2010=100)

(%)

Code NACE Rev.2	Economic activity description	IV - 13	I - 14	II - 14	III - 14	IV - 14
		III - 13	IV - 13	I - 14	II - 14	III - 14
G-N	Services	5,2	-20,8	10,4	14,6	-1,6
G(45)	Wholesale and retail sale of motorvehicles and repair of motorvehicles	-2,5	-3,6	5,7	9,0	-0,5
G(46)	Wholesale trade	6,5	-23,1	13,5	16,2	-2,2
H(49-53)	Transport and storage	-40,2	-36,4	19,6	21,7	-8,3
I(5500)	Hotels	-7,2	-16,6	39,1	15,8	-10,9
J(58, 61, 62)	Information and communication	34,1	-26,6	-1,0	14,7	-7,7
M(71)	Architectural and engineering activities	-7,2	15,1	-16,1	27,3	27,0
N(79)	Travel agency	14,2	-14,9	19,7	16,6	-1,4

Fig. 8 Index of number of employees and wages in Services



Tab. 15 Annual change of the employees number index in Services

(2010=100)

(%)

Code NACE	Economic activity description	IV - 13	I - 14	II - 14	III - 14	IV - 14
Rev.2		IV - 12	I - 13	II - 13	III - 13	IV - 13
G-N	Services	8,2	7,6	18,1	15,2	12,8
G(45)	Wholesale and retail sale of motorvehicles and repair of motorvehicles	6,1	9,8	17,4	3,9	10,5
G(46)	Wholesale trade	11,6	9,5	12,8	17,6	15,1
H(49-53)	Transport and storage	-4,4	-4,8	-4,3	-2,9	4,6
I(5500)	Hotels	4,5	6,6	20,9	22,0	26,5
J(58, 61, 62)	Information and communication	-19,8	-12,1	13,0	19,8	4,4
M(71)	Architectural and engineering activities	82,1	22,7	37,7	21,6	3,8
N(79)	Travel agency	30,3	0,7	2,7	-1,5	1,2

Tab. 16 Quarterly change of the employees number index in Services

(2010=100)

(%)

Code NACE	Economic activity description	IV - 13	I - 14	II - 14	III - 14	IV - 14
REV 2		III - 13	IV - 13	I - 14	II - 14	III - 14
G-N	Services	2,5	9,5	6,2	-3,4	0,4
G(45)	Wholesale and retail sale of motorvehicles and repair of motorvehicles	0,9	6,2	9,9	-11,8	7,3
G(46)	Wholesale trade	2,4	9,1	1,2	4,1	0,1
H(49-53)	Transport and storage	-7,1	3,1	0,3	1,2	0,0
I(5500)	Hotels	-9,9	12,5	7,4	12,1	-6,6
J(58, 61, 62)	Information and communication	9,7	6,5	3,0	-0,5	-4,4
M(71)	Architectural and engineering activities	27,9	0,4	5,1	-10,0	9,2
N(79)	Travel agency	-1,7	1,9	-3,5	2,0	0,9

Tab. 17 Annual change of the wage index in Services

(2010=100)

(%)

Code NACE Rev.2	Economic activity description	IV - 13	I - 14	II - 14	III - 14	IV - 14
		IV - 12	I - 13	II - 13	III - 13	IV - 13
G-N	Services	10,7	3,2	11,0	9,1	6,3
G(45)	Wholesale and retail sale of motorvehicles and repair of motorvehicles	13,5	5,3	7,9	-2,7	-1,2
G(46)	Wholesale trade	14,6	4,2	14,9	18,0	16,7
H(49-53)	Transport and storage	-11,6	-21,2	-13,7	-23,4	-22,2
I(5500)	Hotels	10,7	8,0	16,7	20,6	23,4
J(58, 61, 62)	Information and communication	0,5	12,0	17,7	23,7	12,3
M(71)	Architectural and engineering activities	71,1	6,8	14,7	13,7	-9,6
N(79)	Travel agency	53,4	-11,3	-10,1	-10,0	-5,7

Tab. 18 Quarterly change of the wage index in Services

(2010=100)

(%)

Kodi NVE Rev.2	Economic activity description	IV - 13	I - 14	II - 14	III - 14	IV - 14
		III - 13	IV - 13	I - 14	II - 14	III - 14
G-N	Services	4,3	5,8	3,0	-4,1	1,7
G(45)	Wholesale and retail sale of motorvehicles and repair of motorvehicles	3,7	-3,7	6,1	-8,1	5,3
G(46)	Wholesale trade	0,7	10,6	5,3	0,6	-0,4
H(49-53)	Transport and storage	-18,4	-4,9	4,2	-5,3	-17,1
I(5500)	Hotels	-7,6	9,5	5,6	12,9	-5,5
J(58, 61, 62)	Information and communication	28,6	9,7	-6,5	-6,3	16,9
M(71)	Architectural and engineering activities	30,7	-8,3	-5,3	0,2	3,9
N(79)	Travel agency	3,5	-14,5	-0,2	2,0	8,4

Methodological elucidations

General information

INSTAT, in the wake of its efforts to standardizing and approaching the Albanian statistics to the Eurostat and the standards of EU statistics, publicise the economical indicators such as The volume turnover, Production volume, The number of employees and Wages for these activities: Industry (where are included Mining and Quarrying and Manufacturing); Electricity, gas, steam; Treatment and water supply; Construction and Services (where is included the Trade; Transport and storage; Hotels; Information and communication; Architectural and engineering activities, Travel agency).

In the Trade, the survey covers the activity of the Retail Trade and Wholesale, and the Total sale of motorvehicles and repair of motorvehicles. The indicators of Retail Trade are publicised separately from this publication. For further information, please continue the link as follows:

<http://www.instat.gov.al/al/themes/informacioni-ekonomik-për-ndërmarrjet/publication/books/2014/tregtia-me-pakicë,-t3-2014.aspx>;

The methodological changes are refereed to:

- The application of the revised nomenclature of economic activities, NACE Rev. 2;
- The re-basing process, i.e. the weights within the structure of economy is updated with the base year from 2005 to 2010;
- The re-referencing process, i.e. the periods of reference are updated from 2005=100 to 2010=100.

The application of the Nomenclature of economic activities NACE Rev. 2 is based on the legal act approved through the Decree of the Council of Ministers N° 320, date 20. 05. 2014.

For more information, see http://www.instat.gov.al/media/248316/njoftim_per_media_-_ndryshimi_i_nomenklatur_s_s_veprimtarive_ekonomike_rev_2.pdf

The revised classification differs considerably from the existing classification in terms of structure, classification and methodological treatment of certain activities.

The process of passing of statistical units from NACE Rev. 1.1 to NACE Rev. 2 is performed through the construction of a converted matrix, based on the statistical information obtained from the Structural Business Survey of Enterprises 2010. Referring to the mentioned matrix, in general the activities pass from one classification to other one by one, for the other activities

where the changes that the new classification brought into the sectors covered by short term statistics survey are the following:

- a. By old classification (NACE rev.1.1) the "Publication" activities (division 22) correspond to the new classification with new division 58, "Information and communication" section.
- b. Division 45, which correspond in the NACE Rev.1.1 with "Construction" activity, in the new NACE is split up in three activities, respectable: division 41 – "Construction of dwellings", division 42 – "Civil engineering work", division 43 – "Other specialized construction work" . Also part of this section is also group of activities related to "Real estate activities" which correspond with NACE rev.1.1 with group 70.1.
- c. The postal and courier activities, respectively in the classes 64.11 and 64.12 in NACE rev.1.1 passed to the "Transport and storage activities" division 53, in the NACE rev.2, "Post and courier activities".
- d. Another novelty of the new classification is the pass of the "Collection and Treatment of waste" in the domain of the STST survey, which correspond partially with division 90 in the NACE rev.1.1, to the division 38 "Collection, treatment and management of waste" in NACE rev.2. Also here passed the "Recycle" activities" group 38.3, which correspond with NACE rev.1.1 with division 37, "recycle activities".
- e. In the group 71.0, "Architectural and engineering activities" which correspond with NACE rev.2 with "Architectural and engineering, testing and technical analyses activities" description also are passed to the activities of testing and analyses, which correspond with group 74.3-74.8, " Testing and technical analyses activities".

The main indicator of the Turnover is used for the re-evaluation of the passing of the economic activities from the old to the new classification. The main methods used for the evaluation are two:

- Micro approach method
- Macro approach method

The first method was used in the first three years of the reclassification of the activities of the units on the individual level in the Statistical Business Register, 2010-2012.

The second method was used for the re-evaluation of the data in time series back for the period 2005-2010.

In order to reflect the changes that have taken place within the structure of economy, from the publication of the first quarter 2014 on, the base year of the Short term statistics is updated from 2005 to 2010.

The process of passing from the old to the new base consists of two steps: re-weighting, i.e. the weights used for the calculation of the indexes are updated from the base year 2005 to the base year 2010; and

re-referencing, i.e., the periods of reference are updated from 2005=100 to 2010=100. In the Short term statistics the two steps are used simultaneously. The data series are equivalent to each other; the growth rates are the same, and a series is convertible to the other.

Information on the observation

Purpose – The short term statistics shows the trend of economic development of a country in quarterly periods, by which the policy makers can develop a short term plan for the further development of the country. By this publication the development of the main indicators such as industrial production, turnover, number of employees and wages, in time series are describe.

Coverage- based on main economic activity the main activities covered in the STS survey is as following:

- Industry - composed by Mining and quarrying and Manufacturing industry (05-33)
- Electricity, gas, and steam (35)
- Water supply; sewerage, waste management and remediation activities (36)
- Construction (41, 42, 43)

As the result of applied of the new classification, NACE Rev. 2, the activities that are included in the sector of Services with relevant codes are structured as follow:

- Total sale and repair of motor vehicles (45) and Wholesale, excluding the Total sale and repair of motor vehicles (46)
- Transportation and Storage (is included and the Postal and courier activities) (49-53)
- Accommodation and Food Services, Hotels (55.1)
- Information and Communication (58, 61, 62)
- Architectural and Engineering activities (71)
- Administrative Services and ancillary activities – Travel Agencies (79)

Services composed by: Wholesale trade, Wholesale and retail sale of mote vehicle and repair of motor vehicle; Hotel; Transport and storage; Information and communication; Travel agency, other services.

Model - The enterprises are selected from the Statistical Register of Enterprises. The enterprises with 1-9 employees are surveyed by sample survey, whereas the enterprises with 10 and more employees are surveyed exhaustively.

Data collection - The data are collected directly from enterprises with face to face interview through interviewers. The questionnaire is filled from the interviewers.

Indicators – The indicators are given in Index form, the quarterly changes are given in percentage, whereas the annual changes are given in percentage with reference to the base year, actually 2010=100. The data do not present absolute values.

Indexes – The indexes show the changes in time of a given variable, or of a group of variables. The Index Volume is calculated through the Laspeyres Formula. In order to avoid the prices impact, the indices are deflated with the proper price index by activities, such as the Industry indicator are deflated with Producer Price Index; Construction activity with Construction Cost Index; Hotel activity with Consumer Price Index, Transport with implicit price index calculated, etc.

The annual change in percentage - it measures in percentage the change of economic indicators of the actual quarter compared with the same quarter of the previous year.

The quarterly change in percentage – it measures in percentage the change of economic indicators of the actual quarter against compared with the previous quarter of the same year.

Revision – Indexes may be revised due to several reasons: additional information, the methodological changes, or re-evaluation of the used coefficients etc.

Definition of the main indicators

Turnover is the total amount realized by enterprises during the month from the selling of goods, selling of own products and services excluded VAT.

Number of persons working includes all persons who actually work in the observed unit. There are included, owners and co-owners and family members that helps in the activity and employees in the end of the quarter.

Employment index – shows the evolution of employment in observation unit.

Wages and salaries – are defined as the total remunerations, in cash or in kind payable to all persons counted on the payrolls, in return for work done during the accounting period.

Index of wages and salaries – the gross wages and salaries index approximates the development of the wages and salaries bill.