

Short Term Statistics*

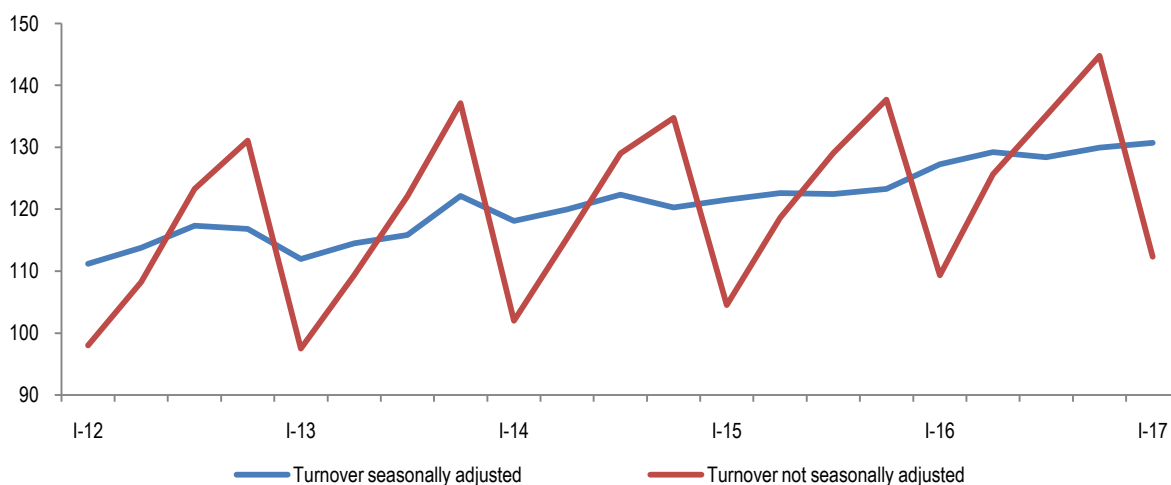
Services - First Quarter, 2017

Tirana, 14 June: Services main quarterly indicators, which include the economic activities: Trade, Transport and storage, Hotels, Information and communication, Architectural and engineering activities, Travel agency, in the first quarter 2017 (base year 2010=100), are presented as follows:

Service

- Turnover volume index increased by 2.7 %, compared with the previous quarter 2016. This indicator sesonally adjusted increased by 0.6 %, compared with the previous quarter;
- The number of employees' index increased by 1.5 %, compared with the same period of the previous year. Compared with the previous quarter, this indicator sesonally unadjusted decreased by 2.1 %;
- Wages index increased by 0.5 %, compared with the same period of the previous year. Compared with the fourth quarter 2016, this indicator sesonally unadjusted decreased by 1.4 %.

Fig. 1 Turnover volum index Services



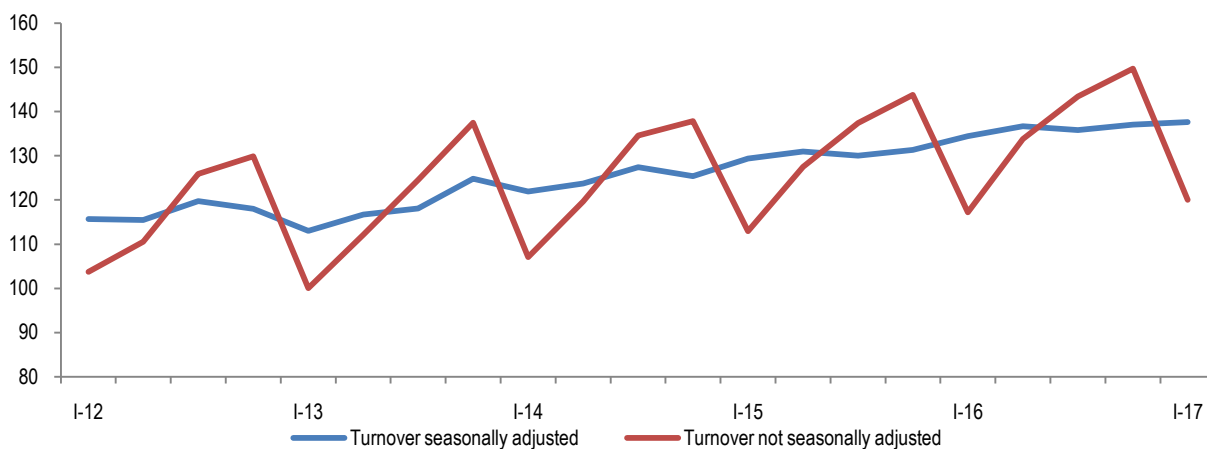
** INSTAT, from the first quarter 2017 presents the updated statistical time series indicators of Services. These time series are presented also, for the first time, seasonally adjusted. (For more information see: Methodological elucidations pg. 7)

Trade

Trade main quarterly indicators, which include the economic activities: Wholesale and retail sale of motor vehicles and repair of motor vehicles, Wholesale trade, in the first quarter 2017 (base year 2010=100), are presented as follows:

- Turnover volume index increased by 2.4 %, compared with the previous quarter 2016. This indicator seasonally adjusted increased by 0.4 %, compared with the previous quarter;
- The number of employees' index increased by 0.7 %, compared with the same period of the previous year. Compared with the previous quarter, this indicator seasonally unadjusted decreased by 2.3 %;
- Wages index decreased by 2.6 %, compared with the same period of the previous year. Compared with the fourth quarter 2016, this indicator seasonally unadjusted decreased by 5.1 %.

Fig.2 Turnover volum index in Trade (2010 = 100)

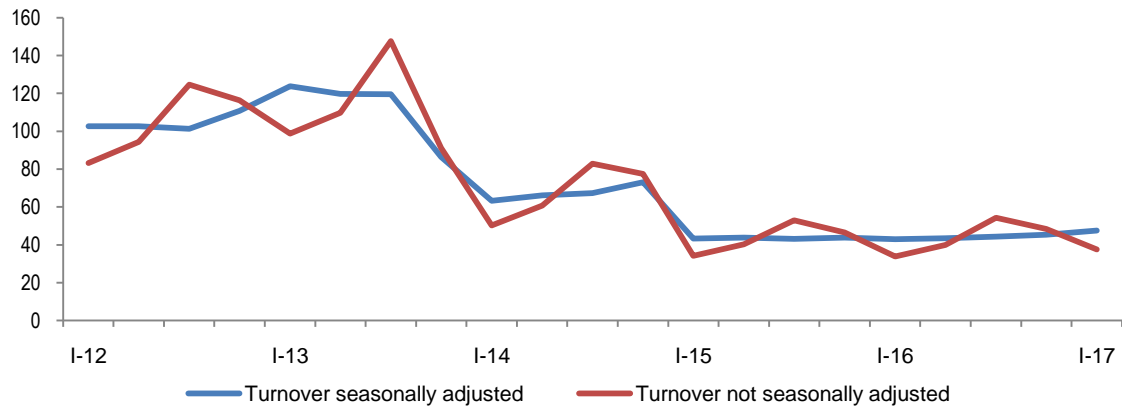


Transport and storage

Transport and storage main quarterly indicators, which include the economic activities: Rail transport of goods, sea transport, air transport, storage and post activity, in the first quarter 2017 (base year 2010=100), are presented as follows:

- Turnover volume index increased by 10.9 %, compared with the previous quarter 2016. This indicator seasonally adjusted increased by 4.8 %, compared with the previous quarter;
- The number of employees' index increased by 11.1 %, compared with the same period of the previous year. Compared with the previous quarter, this indicator seasonally unadjusted increased by 10.0 %.
- Wages index increased by 7.5 %, compared with the same period of the previous year. Compared with the fourth quarter 2016, this indicator seasonally unadjusted increased by 10.0 %.

Fig.3 Turnover volum index in Transportation and storage activities (2010 = 100)

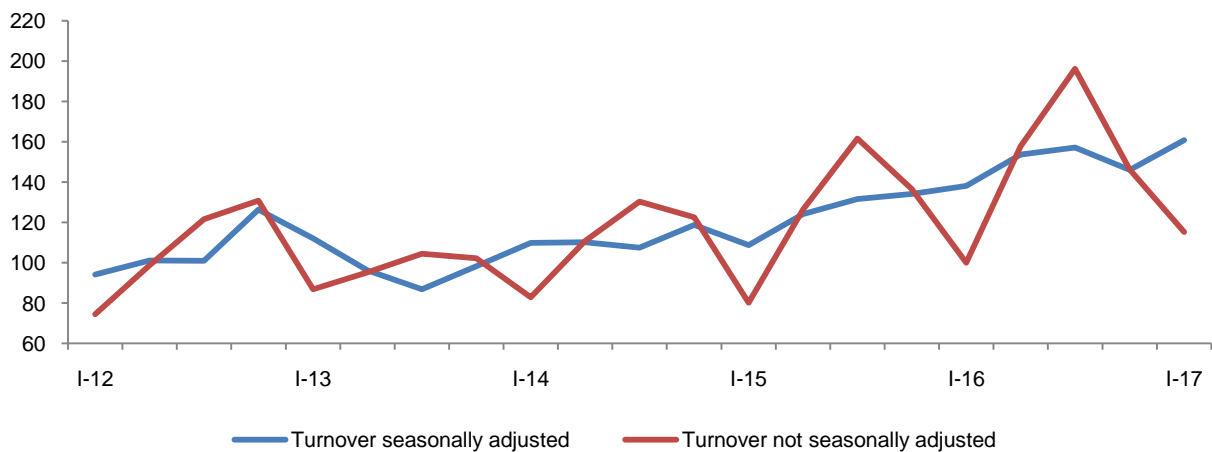


Hotels

Hotels main quarterly indicators, in the first quarter 2017 (base year 2010=100), are presented as follows :

- Turnover volume index increased by 15.1 %, compared with the previous quarter 2016. This indicator seasonally adjusted increased by 10.1 %, compared with the previous quarter;
- The number of employees' index decreased by 9.5 %, compared with the same period of the previous year. Compared with the previous quarter, this indicator seasonally unadjusted decreased by 4.2 %.
- Wages index increased by 0.5 %, compared with the same period of the previous year. Compared with the fourth quarter 2016, this indicator seasonally unadjusted increased by 4.6 %.

Fig. 4 Turnover volum index in Hotels (2010 = 100)

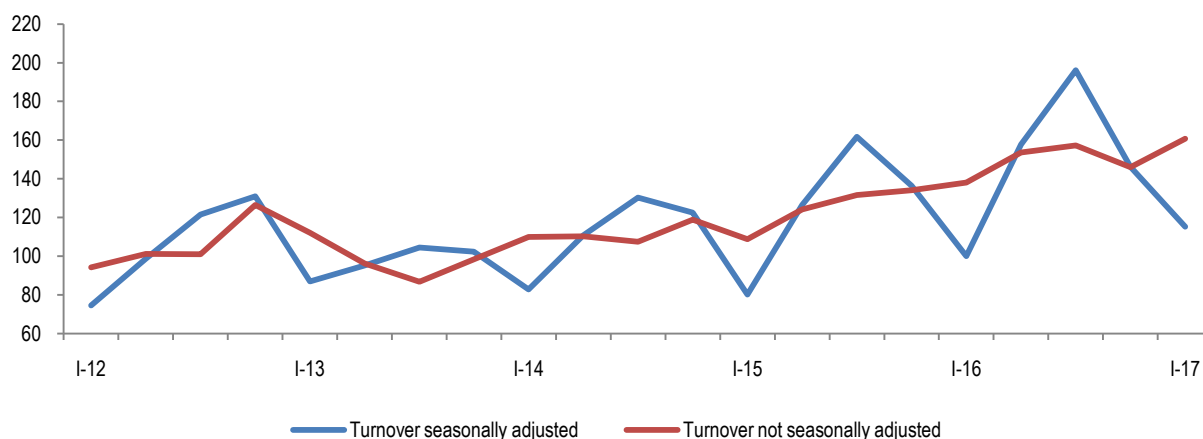


Information dhe communication

Information and communication main quarterly indicators, in the first quarter 2017 (base year 2010=100), are presented as follows :

- Turnover volume index decreased by 1.1 %, compared with the previous quarter 2016. This indicator seasonally adjusted decreased by 3.6 %, compared with the previous quarter;
- The number of employees' index increased by 13.3 %, compared with the same period of the previous year. Compared with the previous quarter, this indicator seasonally unadjusted increased by 6.1 %.
- Wages index decreased by 7.6 %, compared with the same period of the previous year. Compared with the fourth quarter 2016, this indicator seasonally unadjusted decreased by 4.7 %.

Fig. 5 Turnover volum index in Information and communication activities (2010 = 100)

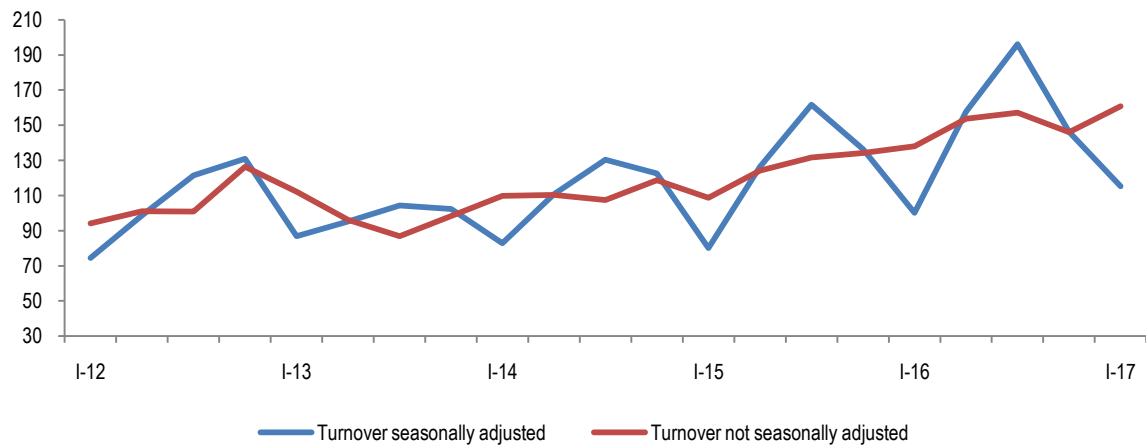


Architectural and engineering activities

Architectural and engineering activities main quarterly indicators, in the first quarter 2017 (base year 2010=100), are presented as follows :

- Turnover volume index increased by 5.4 %, compared with the previous quarter 2016. This indicator seasonally adjusted decreased by 1.1 %, compared with the previous quarter;
- The number of employees' index increased by 13.2 %, compared with the same period of the previous year. Compared with the previous quarter, this indicator seasonally unadjusted increased by 3.2 %.
- Wages index increased by 21.8 %, compared with the same period of the previous year. Compared with the fourth quarter 2016, this indicator seasonally unadjusted increased by 5.4 %.

Fig.6 Turnover volum index in Architectural and engineering activities (2010 = 100)

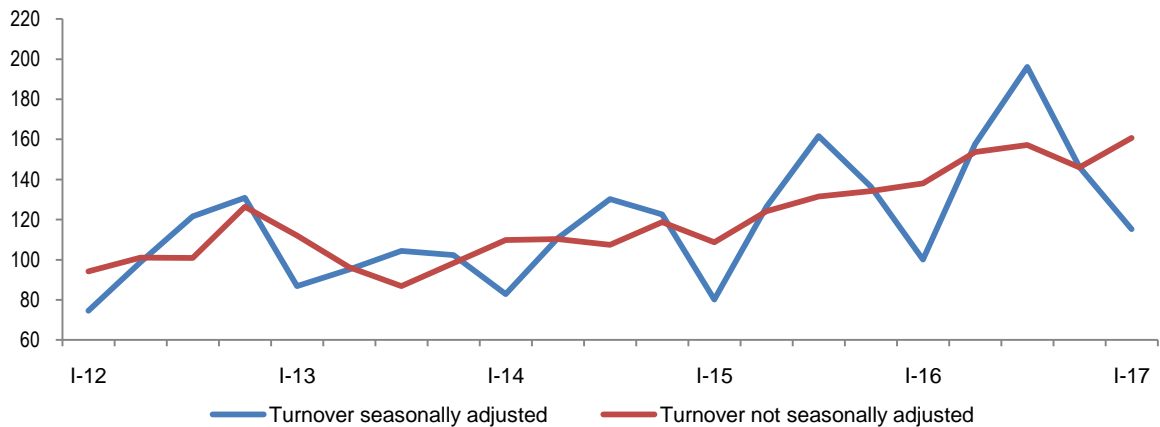


Travel agency

Travel agency main quarterly indicators, in the first quarter 2017 (base year 2010=100), are presented as follows :

- Turnover volume index increased by 21.3 %, compared with the previous quarter 2016. This indicator sesonally adjusted decreased by 1.6 %, compared with the previous quarter;
- The number of employees' index increased by 36.6 %, compared with the same period of the previous year. Compared with the previous quarter, this indicator sesonally unadjusted increased by 30.1 %.
- Wages index increased by 34.7 %, compared with the same period of the previous year. Compared with the fourth quarter 2016, this indicator sesonally unadjusted increased by 26.1 %.

Fig.7 Turnover volum index in Travel agency activity (2010 = 100)



Tab. 1 Turnover volume index, seasonally unadjusted, Services (2010=100)

NACE Rev.2		Economic activity	Tr.1.17	I - 17	I - 17
Section	Division		Ø 2010	I - 16	IV - 16
G-N		Services	112.3	2.7	-22.4
G	45+46	Trade	120.0	2.4	-19.8
H	49-53	Transport and storage	37.6	10.9	-22.4
I	55.1	Hotels	115.2	15.1	-21.2
J	58,61,62	Information and communication	76.9	-1.1	-45.7
M	71	Architectural and engineering activities	115.4	5.4	-37.9
N	79	Travel agency	189.4	21.3	-13.3

Tab.2 Turnover volume index, seasonally adjusted, Services (2010=100)

NACE Rev.2		Economic activity	Tr.1.17	I - 17	I - 17
Section	Section		Ø 2010	I - 16	IV - 16
G-N		Services	130.7	2.7	0.6
G	45+46	Trade	137.6	2.4	0.4
H	49-53	Transport and storage	47.6	10.8	4.8
I	55.1	Hotels	160.7	16.4	10.1
J	58,61,62	Information and communication	101.9	-1.2	-3.6
M	71	Architectural and engineering activities	130.8	7.0	-1.1
N	79	Travel agency	209.0	21.2	-1.6

Tab.3 Number of employees index, seasonally unadjusted, Services (2010=100),

NACE Rev.2		Economic activity	Tr.1.17	I - 17	I - 17
Section	Section		Ø 2010	I - 16	IV - 16
G-N		Services	165.2	1.5	-2.1
G	45+46	Trade	199.7	0.7	-2.3
H	49-53	Transport and storage	114.4	11.1	10.0
I	55.1	Hotels	110.5	-9.5	-4.2
J	58,61,62	Information and communication	110.9	13.3	6.1
M	71	Architectural and engineering activities	159.7	13.2	3.2
N	79	Travel agency	298.8	36.6	30.1

Tab.4 Wages index, seasonally unadjusted, Services (2010=100)

NACE Rev.2		Economic activity	Tr.1.17	I - 17	I - 17
Section	Section		Ø 2010	I - 16	IV - 16
G-N		Services	162.8	0.5	-1.4
G	45+46	Trade	196.0	-2.6	-5.1
H	49-53	Transport and storage	88.7	7.5	10.0
I	55.1	Hotels	130.0	0.5	4.6
J	58,61,62	Information and communication	128.6	-7.6	-4.7
M	71	Architectural and engineering activities	190.8	21.8	5.4
N	79	Travel agency	332.8	34.7	26.1

Methodological elucidations

General Information

NSTAT, from the first quarter 2017, presents the value and volume turnover indices on Services which include: Total sale and repair of motor vehicles (45) and Wholesale, excluding the Total sale and repair of motor vehicles (46), Transportation and Storage (is included and the Postal and courier activities) (49-53), Hotels (55.1), Information and Communication (58. 61. 62), Architectural and Engineering activities (71), Travel Agencies (79), with some methodological updates.

- Backcasting of indicators (in value and volume) of retail trade time series, as a result of change of number of enterprises registered in 2015 by tax offices.
- Seasonally and calendar adjusted of time series
INSTAT, in 2017 published the Statistical Revision Policy in the following link: (http://www.instat.gov.al/media/371722/revision_policy_2016.pdf).

The process of backcasting

In 2015 the number of active enterprises in Statistical Business Register (excluding agricultural enterprise) increased 20 %, impacting so the change of population of domain covered in services.

As a result of this, the results of time series are updated in individual groups, and the weights are updated in aggregate level. From this process the levels of results change. We have an increase in the level, but the growth rate remains almost the same. The process of update is fulfilled by benchmarking the results obtained from the Statistical Business Register updated in 2015, by using the proportional Denton method.

Seasonal adjustment

Seasonal adjustment of quarterly time series of producer of materials goods is done by using JDemetra+ 2.1 version software. The chosen model for the decomposition of time series is X-12 ARIMA, under specification X-13, the span of time series is from 2005 to 2017. X-12 ARIMA model is totally based in moving average. In all time series is applied the multiplicative decomposition and the direct approach. During the process of seasonal adjustment are treated even the special case occurred during the time series span, identified by software as outlier.

Information on the observation

Services

Purpose – The short term statistics shows the trend of economic development of a country in quarterly periods, by which the policy makers can develop a short term plan for the further development of the country. By this

publication the development of the main indicators such as industrial production, turnover, number of employees and wages, in time series are describe.

Coverage- based on main economic activity the main activities covered in the STS survey for services is as following:

- Total sale and repair of motor vehicles (45) and Wholesale (46)
- Transportation and Storage (is included and the Postal and courier activities) (49-53)
- Accommodation and Food Services, Hotels (55.1)
- Information and Communication (58, 61, 62)
- Architectural and Engineering activities (71)
- Administrative Services and ancillary activities – Travel Agencies (79)

Model and data collection - The enterprises are selected from the Statistical Register of Enterprises. The enterprises with 1-9 employees are surveyed by sample survey, whereas the enterprises with 10 and more employees are surveyed exhaustively. The data are collected directly from enterprises with face to face interview through interviewers. The questionnaire is filled from the interviewers.

Indicators – The indicators are given in Index form, the quarterly changes are given in percentage, whereas the annual changes are given in percentage with reference to the base year, actually 2010=100. The data do not present absolute values.

Indexes – The indexes show the changes in time of a given variable, or of a group of variables. The Index Volume is calculated through the Laspeyres Formula. In order to avoid the prices impact, the indices are deflated with the proper price index by activities. Transport with implicit price index calculated, etc.

The annual and quarterly changes in percentage – The annual change measures in percentage the change of economic indicators of the actual quarter compared with the same quarter of the previous year. The quarterly change in percentage it measures in percentage the change of economic indicators of the actual quarter against compared with the previous quarter of the same year.

Revision – Indexes may be revised due to several reasons: additional information, the methodological changes, or re-evaluation of the used coefficients etc.

Definition of the main indicators

Turnover is the total amount realized by enterprises during the month from the selling of goods, selling of own products and services excluded VAT.

Number of persons working includes all persons who actually work in the observed unit. There are included, owners and co-owners and family members that helps in the activity and employees in the end of the quarter.

Employment index – shows the evolution of employment in observation unit.

Wages and salaries – are defined as the total remunerations, in cash or in kind payable to all persons counted on the payrolls, in return for work done during the accounting period.

Index of wages and salaries – the gross wages and salaries index approximates the development of the wages and salaries bill.