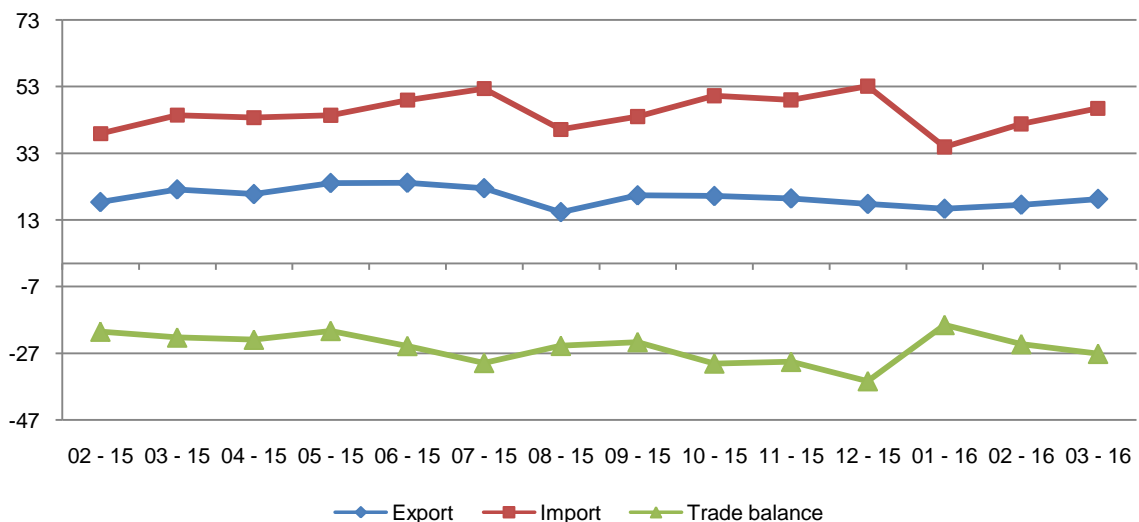


Foreign Trade in Goods

March, 2015

Tirana, April 28, 2015: On March 2016 the value of exports was 19 billion lekë, decreasing by 12.8 % compared with March 2015 and increasing by 9.9 % compared with February 2016. The value of imports in March 2016, was 46 billion lekë, increasing by 4.6 % compared with March 2015 and 11.1 % compared with February 2016. This month the trade deficit is 27 billion lekë signing an increase by 22.0 % compared with March 2015 and 12.0 % compared with February 2016.

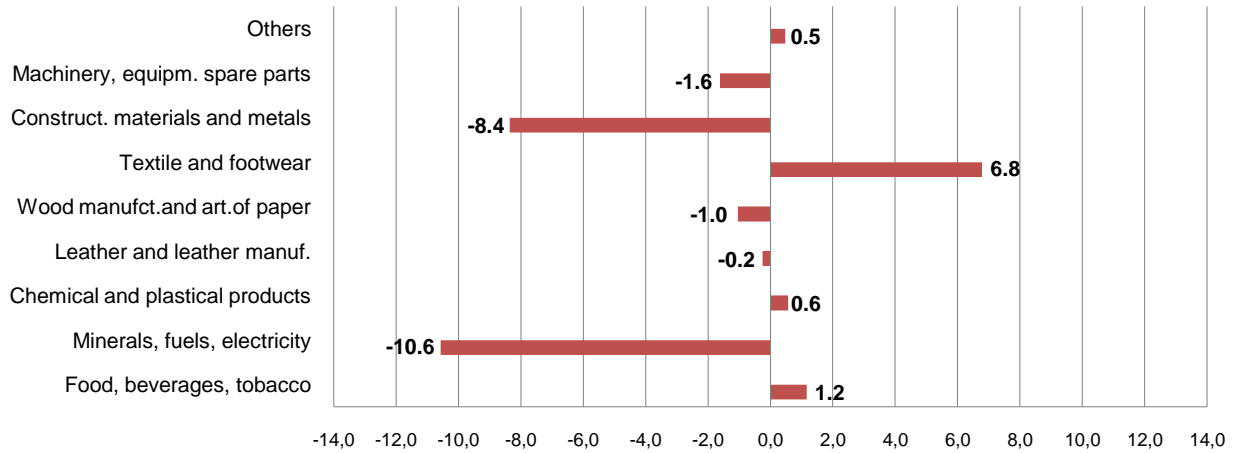
Fig.1 Flow of goods, February 2014 – March 2015 (billion ALL)



The influence of the main groups in the annual change in exports:

In annual decrease of exports by 12.8 % this month a negative contribution was given by the groups: "Minerals, fuels, electricity" with -10.6 percentage point, "Construction materials and metals" with -8.4 percentage point, "Machinery, equipment spare parts" with -1.6 percentage point. While a positive contribution was given by the groups: "Textile and footwear" with +6.8 percentage point, "Food, beverages, tobacco" with +1.2 percentage point, "Chemical and plastical products" with +0.6 percentage point.

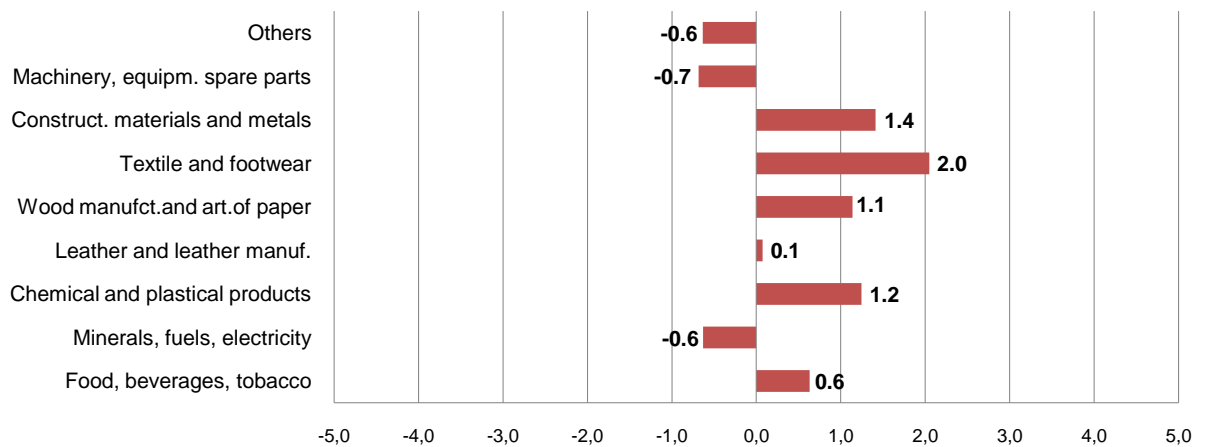
Fig.2 Annual impact of groups in exports



The influence of the main groups in the annual change in imports:

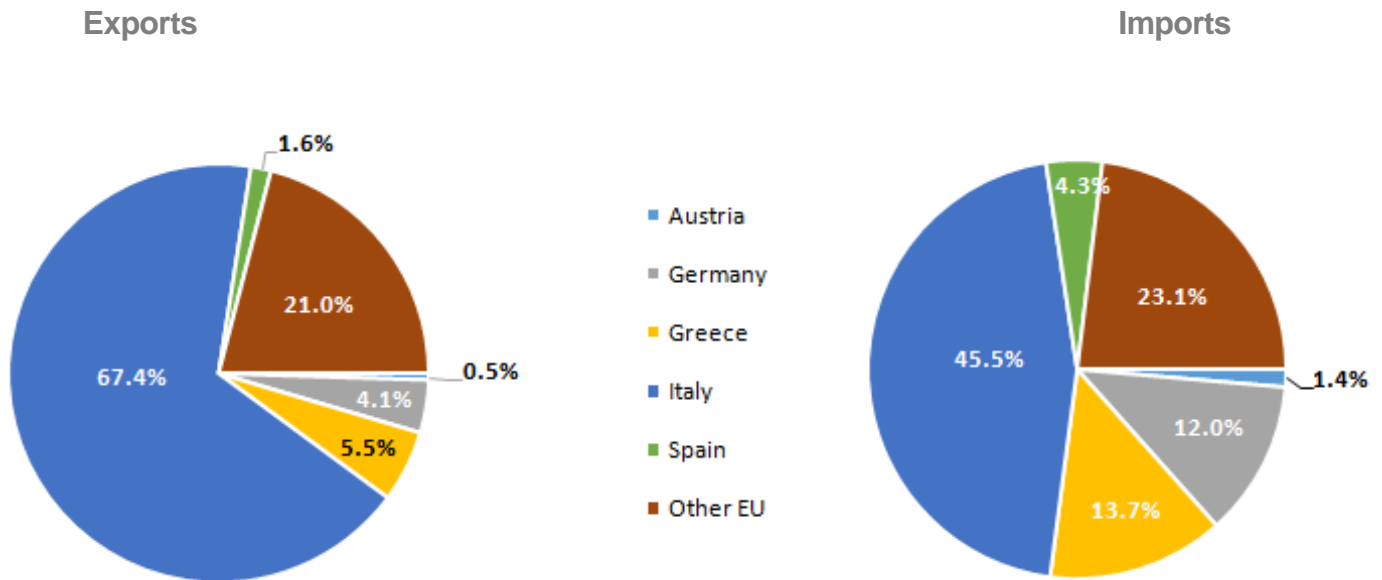
In annual increase of imports by 4.6 % in March 2016 a positive contribution was given by the groups: "Textile and footwear" with +2.0 percentage point, "Construction materials and metals" with +1.4 percentage point, "Chemical and plastical products" with +1.2 percentage point. While a negative contribution was given by the groups., "Machinery, equipment spare parts" with -0.7 percentage point and "Minerals, fuels, electricity" with -0.6 percentage point.

Fig.3 Annual impact of groups in imports



In March 2016, countries with which Albania has had the highest increase of exports, compared to March 2015 are: Italy with 3.7 %, Malta with 110.6 % and Greece with 1.0 %. While, countries with which has had a decrease of exports are: Kosovo with 32.1 %, Macedonia with 19.8 % and China with 37.1 %. In March 2016, countries with which Albania has had the highest increase of imports, compared to March 2015 are: Turkey with 20.9 %, Greece with 6.3 % and Germany with 8.5 %. While, countries with which has had a decrease of imports are: Italy with 1.8 %, China with 7.8 % and Serbia with 5.1 %.

Fig.4 Foreign Trade in Goods by several EU countries, March 2016



Trade with the EU countries is 66.6 % of total trade. In March 2016, exports to EU countries occupied 81.8 % of total export and imports from EU countries occupied 60.3 % of total import.

The main trade partners remain Italy (35.6 %), China (7.7 %), Greece (7.2 %) and Turkey (6.2 %).

Tab. 1 Flow of goods (million ALL)

Years	Months	Exports	Imports	Trade Balance	Percentage of cover
2000		37,037	157,109	-120,072	23.6
2001		44,096	190,155	-146,059	23.2
2002		47,490	210,368	-162,878	22.6
2003		54,487	225,983	-171,496	24.1
2004		62,121	236,072	-173,951	26.3
2005		65,818	262,191	-196,373	25.1
2006		77,405	299,147	-221,742	25.9
2007		97,171	376,194	-279,023	25.8
2008		112,572	439,894	-327,322	25.6
2009		104,515	428,839	-324,324	24.4
2010		161,548	477,768	-316,220	33.8
2011		196,897	544,004	-347,108	36.2
2012		213,030	528,490	-315,460	40.3
2013		246,397	517,378	-270,981	47.6
2014		255,759	552,279	-296,520	46.3
2015		243,183	544,588	-301,405	44.7
2014	01 - 14	17,869	34,922	-17,053	51.2
	02 - 14	20,304	39,193	-18,889	51.8
	03 - 14	21,302	42,478	-21,176	50.1
	04 - 14	22,720	44,308	-21,588	51.3
	05 - 14	25,317	48,241	-22,924	52.5
	06 - 14	22,490	49,351	-26,860	45.6
	07 - 14	22,911	47,158	-24,247	48.6
	08 - 14	18,582	44,601	-26,019	41.7
	09 - 14	21,324	47,402	-26,078	45.0
	10 - 14	22,269	52,436	-30,167	42.5
	11 - 14	21,380	48,080	-26,700	44.5
	12 - 14	19,290	54,108	-34,818	35.7
2015	01 - 15	17,763	35,245	-17,482	50.4
	02 - 15	18,392	38,889	-20,497	47.3
	03 - 15	22,179	44,437	-22,258	49.9
	04 - 15	20,783	43,696	-22,913	47.6
	05 - 15	24,098	44,382	-20,284	54.3
	06 - 15	24,158	48,952	-24,794	49.4
	07 - 15	22,540	52,411	-29,871	43.0
	08 - 15	15,376	40,126	-24,750	38.3
	09 - 15	20,403	44,027	-23,624	46.3
	10 - 15	20,204	50,249	-30,044	40.2
	11 - 15	19,468	49,017	-29,549	39.7
	12 - 15	17,817	53,157	-35,340	33.5
2016	01 - 16	16,380	34,879	-18,499	47.0
	02 - 16	17,592	41,837	-24,245	42.0
	03 - 16	19,331	46,481	-27,150	41.6

Tab.2 Foreign trade in goods by partner countries (million ALL)

	Exports				Imports			
	March-15	March-16	Jan-Mar 15	Jan-Mar 16	March-15	March-16	Jan-Mar 15	Jan-Mar 16
EU countries	14,972	15,814	42,472	45,069	27,495	28,044	69,515	75,534
Austria	424	79	1,523	316	692	380	1,198	1,207
United Kingdom	61	50	176	109	469	267	1,118	854
Germany	576	642	1,743	1,974	3,113	3,376	7,894	8,753
Greece	865	873	2,200	2,337	3,609	3,838	9,133	9,581
Italy	10,273	10,658	29,943	31,757	13,000	12,767	34,591	37,709
Spain	792	246	2,481	1,067	606	1,216	1,482	2,404
Croatia	40	77	106	153	495	299	1,024	818
Others of EU	1,940	3,189	4,300	7,356	5,511	5,900	13,075	14,209
China	530	333	1,727	909	5,106	4,706	12,369	12,152
Kosovo	2,027	1,376	4,384	3,125	426	407	1,191	931
Macedonia	656	526	1,174	983	665	573	1,797	1,366
Russia	-	-	-	1	681	966	2,466	1,854
USA	221	140	1,139	328	794	612	2,488	2,090
Turkey	1,580	105	3,478	266	3,285	3,971	8,731	9,737
Ukraine	2	1	6	36	228	326	852	657
Switzerland	482	206	554	387	601	1,234	2,636	2,382
Others	1,710	829	3,402	2,199	5,155	5,643	16,526	16,492
Total	22,179	19,331	58,334	53,302	44,437	46,481	118,571	123,196

Tab. 3 Foreign trade by group of goods (million ALL)

Group of goods	Exports				Imports			
	March-15	March-16	Jan-Mar 15	Jan-Mar 16	March-15	March-16	Jan-Mar 15	Jan-Mar 16
Total	22,179	19,331	58,334	53,302	44,437	46,481	118,571	123,196
Food, beverages, tobacco	1,325	1,583	3,586	4,707	7,972	8,252	21,396	21,839
Minerals, fuels, electricity	5,948	3,603	14,304	7,982	4,234	3,953	13,413	11,976
Chemical and plastic products	332	458	896	995	6,244	6,798	16,622	17,244
Leather and leather manuf.	308	254	654	772	1,185	1,217	3,036	3,399
Wood manufct. and art. of paper	862	630	2,183	1,851	1,577	2,082	4,547	5,075
Textile and footwear	7,349	8,854	21,869	26,183	5,522	6,432	14,745	17,433
Construct. materials and metals	4,277	2,422	10,040	6,557	5,413	6,041	15,036	14,843
Machinery, equipm. spare parts	1,324	966	3,626	2,678	10,328	10,025	25,476	27,288
Others	454	560	1,177	1,579	1,962	1,680	4,300	4,099

Tab. 4 Exports of group of goods and main partners, January-March 2016 (million ALL)

Group of goods	Italy	Kosovo	Greece	Germany	Others
Total	31,757	3,125	2,337	1,974	14,109
Food, beverages, tobacco	1,900	462	459	299	1,588
Minerals, fuels, electricity	607	585	97	91	6,601
Chemical and plastical products	381	302	63	65	185
Leather and leather manuf.	719	0	12	3	37
Wood manufct.and art. of paper	1,426	74	170	23	158
Textile and footwear	21,187	11	1,154	1,246	2,584
Construct. materials and metals	2,943	1,261	286	123	1,943
Machinery, equipm. spare parts	1,876	162	24	89	527
Others	718	269	72	35	485

Tab. 5 Imports of group of goods and main partners, January-March 2016 (million ALL)

Group of goods	Italy	China	Turkey	Greece	Others
Total	37,709	12,152	9,737	9,581	54,017
Food, beverages, tobacco	3,927	133	1,129	3,503	13,147
Minerals, fuels, electricity	4,153	85	112	580	7,046
Chemical and plastical products	3,545	909	1,345	1,684	9,761
Leather and leather manuf.	2,748	192	75	19	365
Wood manufct.and art. of paper	1,467	236	652	525	2,195
Textile and footwear	9,125	2,081	3,122	838	2,267
Construct. materials and metals	3,902	3,679	1,234	1,453	4,576
Machinery, equipm. spare parts	7,742	3,986	1,654	639	13,267
Others	1,099	850	416	340	1,395

DEFINITIONS

Exports are goods destined to a third country, placed under customs export or outward processing arrangements or re-exported following inward processing.

The FOB (free on board) value of exports of goods is the value of the goods at the exporter's customs frontier.

Imports are goods arrived from a third country and are directly placed, or are left in warehouse, under customs procedure of release for free circulation, inward processing or processing under customs control.

The cost, insurance and freight (CIF) price is the price of a good delivered at the frontier of the importing country, or the price of a service delivered to a resident, before the payment of any import duties or other taxes on imports or trade and transport margins within the country.

Combined Nomenclature (CN) is a goods nomenclature used by international trade in goods statistics and for customs tariffs.

Member State of European Union Belgium, Germany, France, Italy, Luxembourg, Netherlands, United Kingdom, Denmark, Ireland, Greece, Spain, Portugal, Austria, Finland, Sweden, Cyprus, Czech Republic, Estonia, Hungary, Latvia, Lithuania, Malta, Poland, Slovakia, Slovenia, Bulgaria, Romania, Croatia.

Explanation of Symbols

0 value less than half of unit of measure

- no value

÷ up to