



Regional Accounts in Albania 2012

Preface

INSTAT publishes the latest edition of “Regional Accounts in Albania” to accomplish the obligations in context of the European Union membership, which under the Association and Stabilization Agreement signed in 2006, Albania, in 2011, should produce its GDP per capita, according to the Nomenclature of Territorial Measuring Units for Statistics (NUTS 2) of the European Union.

The Nomenclature of Territorial Measuring Units for Statistics (NUTS) is a uniform classification, and is used as a base for collection and processing of European regional statistics. Regional statistics are the foundation of the European Statistical System. They are used for different purposes. NUTS classification by the European Union is implemented as a standardized breakdown in purpose of:

- i) Collection, development and harmonization of statistics at regional level;
- ii) Socio-economic analysis of the regions;
- iii) For allocation of structural funds for development;

The production of additional economic regional statistics is followed by important decisions in national level and for European Union Regional Policy in the process of allocating structural funds. Regional Development of regions is linked with attracting investments based on the decision making process from available Regional Accounts Data.

The statistical information in this publication is supplemented by a set of definitions and basic concepts used in National and Regional Accounts as well as maps and graphs reflecting regionalization of selected macroeconomic categories.

Detailed information on the level of economic development in regions and prefectures will be helpful in economic analyses and for monitoring changes in the structure in context of regions.

INSTAT has revised all time series for the years 2008-2012 of Annual National Accounts Indicators, which were published on 30/May/2014 and have also provided a full methodological manual on these revisions.¹

These methodological changes were reflected in the new Revision for Regional Accounts, in data sources and also in methodology revision. For more information on the revisions please consult the manual “Methodology in Regional Accounts (GDP) in the address: (To be established).

This publication contains results of calculations of Gross Domestic Product and its components for the years 2008-2012 according statistical regions level 2 and 12 statistical regions level 3 harmonized with statistical breakdown of Territorial Measuring Units for Statistics (NUTS).

For the user, data are expressed in Euro, Dollars and in PPS (Power Purchaser Standard) for international comparisons effects.

¹ http://www.instat.gov.al/media/246861/methodological_explanations_on__annual_gdp_revisions.pdf

Regional Accounts in Albania

Contents

PREFACE	2
CONTENTS	3
1. BREAKDOWN OF TERRITORY FOR REPUBLIC OF ALBANIA BY STATISTICAL REGIONS	5
2. REGIONAL ACCOUNTS IN ALBANIA 2012	6
2.1 GDP by Statistical Regions level 2 and 3	6
2.2 Growth Rates of Gross Domestic Product by Prefecture	8
2.3 GDP per capita according statistical levels	9
2.4 GDP per capita in PPS in Albania	10
2.5 Share of GDP by statistical regions level 2/3 year 2012	11
2.6 Gross Value Added by branches and by prefectures	12
2.7 Unique Position of Tirana in the Republic of Albania	18
2.8 Diversity of statistical regions	18
ANNEXES	20
Annex A: Maps	20
Annex A.1. Geographical distribution by Statistical Regions level 2 (NUTS2)	20
Annex A.2. GDP in current prices by Statistical Regions level 3 (NUTS3)	21
Annex A.2. GDP in current prices by Statistical Regions level 3 (NUTS3)	22
Annex B: Tables	23

List of Tables by Statistical Regions

Table B.1. Gross Value Added by Statistical Regions level 1, 2, 3 years 2008-2012.....	23
Table B.2. Gross Domestic Product in current prices.....	24
Table B.3. Gross Domestic Product at prices of previous year.....	25
Table B.4. Gross Domestic Product in Euro.....	26
Table B.5. Gross Domestic Product in PPS.....	27
Table B.6. Growth rate of GDP.....	28
Table B.7. Average Population in Albania.....	29
Table B.8. Gross Domestic Product per Capita, in Lek.....	30
Table B.9. Gross Domestic Product per Capita, in Euro.....	31
Table B.10. Gross Domestic Product per Capita, in PPS.....	32
Table B.11. Gross Domestic Product per Capita, AL=100.....	33
Table B.12. Gross Domestic Product per Capita, EU28=100.....	34
Table B.13. Share of statistical regions in Gross Value Added for year, 2012* (Branch=100%).....	35
Table B.14. Share of statistical regions in Gross Value Added for year, 2012* (Region=100%).....	36
Table B.15. Statistical Region Durrës and North.....	37
Table B.16. Statistical Region Center.....	38
Table B.17. Statistical Region South.....	39
Table B.18. Prefecture Dibër.....	40
Table B.19. Prefecture Durrës.....	41
Table B.20. Prefecture Kukës.....	42
Table B.21. Prefecture Lezhë.....	43
Table B.22. Prefecture Shkodër.....	44
Table B.23. Prefecture Elbasan.....	45
Table B.24. Prefecture Tiranë.....	46
Table B.25. Prefecture Berat.....	47
Table B.26. Prefecture Fier.....	48
Table B.27. Prefecture Gjirokastër.....	49
Table B.28. Prefecture Korçë.....	50
Table B.29. Prefecture Vlorë.....	51

1. Breakdown of territory for Republic of Albania by Statistical Regions

On 28-th April 2011 EUROSTAT confirmed INSTAT proposal, approved by Council of Ministers², for regional break down of Albania in 3 statistical regions level 2 and 12 statistical regions level 3, corresponding existing prefectures. The composition of statistical regions is presented in the following table:

Regional structure in Albania according NUTS

Statistical Region level 1	Statistical Region level 2	Statistical Region level 3
Republic of Albania	North	Dibër
		Durrës
		Kukës
		Lezhë
		Shkodër
	Center	Elbasan
		Tiranë
		Berat
	South	Fier
		Gjirokastrë
		Korçë
		Vlorë

The breakdown of the Albania territory is in coherence with Regulation (EC) No 1059/2003 of the European Parliament and of the Council of 26 May 2003 on the establishment of a common classification of territorial Measuring Units for statistics (NUTS).

Number of population for each non-administrative unit at level NUTS 2 is harmonised with thresholds in Regulation of European Commission arranged minimum size 800 thousand people and maximum 3 million inhabitants.

Regions at level 3 are Administrative Measuring Units (Prefecture). Average number of population for level 3 is 241,707 inhabitants in year 2012 within interval from 150 to 800 thousand of inhabitants.

NUTS	Minimal number of residents	Maximal number of residents
NUTS 1	3,000,000	7,000,000
NUTS 2	800,000	3,000,000
NUTS 3	150,000	800,000

² Decision of C.M no.1037 date 15.12.2010 "On the implementation of the nomenclature "Albania in 3 (three) regions NUTS II" according to the Nomenclature of the Territorial Units on statistics (NUTS) of the European Union.

2. Regional Accounts in Albania 2012

The estimation of Regional Accounts in Albania is based on Annual National Accounts Concepts. This is the fourth release of Regional Accounts in Albania and compiled in accordance with guidelines set out in ESA Chapter 13- Regional Accounts. The regional indicators cover years 2008-2012 published at statistical 2 and 3 levels main branches of the economy

The publication contains indicators of Gross Value Added (GVA) and Gross Domestic Product (GDP) with current and constant prices for years 2008-2012. Regional macroeconomic estimates are available for 3 Statistical Regions Level 2 regions and 12 Statistical Regions Level 3 called prefectures. Estimates are consistent with EUROSTAT recommendations.

2.1 GDP by Statistical Regions level 2 and 3

In year 2012, according statistical regions level 1 (Republic of Albania), GDP at current prices was 1,335.5 billion lek and has increase by 1.6% compared to year 2011.

In year 2012 according statistical regions level 2, in Central region, GDP at current prices was 615.3 billion lek or 46.1% of the total GDP of the country. Compared to year 2011 GDP at current prices has increased by 1.6%. GDP at current prices in South Region was 399.7 billion lek or 29.9% of total of the country. Compared to year 2011 GDP at current prices has increased by 1.0%. GDP at current prices in North Region was 320.5 billion lek or 24.0% of total GDP. Compared to year 2011 GDP at current prices has increased by 2.3%.

According to statistical regions level 3 (Prefecture) the lowest value of GDP was in prefecture Kukës with 27.9 billion lek or 2.1% of total GDP. Compared to year 2011 GDP at current prices has decreased by 4.3%. The highest value in GDP was in prefecture Tiranë with around 510 billion lek or 38.2% of total GDP. Compared to year 2011, GDP at current prices increased by 2.1%.

In the table below are presented some of the main results of National Regional Accounts in Albania. In Appendix A.2 there is the map of the distribution of GDP by statistical regions level 3 (Prefectures).

GDP at current prices, per capita year 2012 by Statistical Regions Level 2/3

in Mn. Lek

Statistical Regions level 2 / 3		GDP Current prices (million lek)	GDP Current price (million euro)	GDP Current price (million dollars)	Share of AL (%)	GDP Per Capita (Thousand lek)	GDP Per Capita (Euro)	GDP Per Capita (USD)	GDP Per Capita index (AL = 100)
AL	The Republic of Albania	1,335,489	9,608	12,346	100	460,436	3,312	4,257	100
AL01	North	320,499	2,306	2,963	24.0	371,667	2,674	3,436	80.7
AL011		43,236	311	400	3.2	309,670	2,228	2,863	67.3
AL012		132,212	951	1,222	9.9	481,007	3,460	4,447	104.5
AL013		27,898	201	258	2.1	319,935	2,302	2,958	69.5
AL014		45,349	326	419	3.4	327,027	2,353	3,023	71.0
AL015		71,805	517	664	5.4	323,480	2,327	2,990	70.3
AL02	Center	615,338	4,427	5,689	46.1	564,942	4,064	5,223	122.7
AL021		105,245	757	973	7.9	346,054	2,490	3,199	75.2
AL022		510,093	3,67	4,716	38.2	649,737	4,674	6,007	141.1
AL03	South	399,651	2,875	3,695	29.9	421,150	3,030	3,893	91.5
AL031		54,192	390	501	4.1	371,324	2,671	3,433	80.6
AL032		166,222	1,196	1,537	12.4	520,813	3,747	4,815	113.1
AL033		29,093	209	269	2.2	392,225	2,822	3,626	85.2
AL034		72,962	525	675	5.5	321,697	2,314	2,974	69.9
AL035		77,182	555	714	5.8	422,054	3,036	3,902	91.7

*Estimations for year 2012 are based on flash estimations

2.2 Growth Rates of Gross Domestic Product by Prefecture

Gross Domestic Products in 2012, in comparison to 2011, grew by 1.6 % at current prices. By statistical regions level 3, in the table below are expressed the growth rates of respective statistical regions.

The real GDP for year 2012 was subject to variation in the rates between Statistical Regions Level 3 (Prefecture). The rates, in particular year and in particular prefecture, depends on the contribution of the individual prefecture in the total GDP, the branch structure etc.

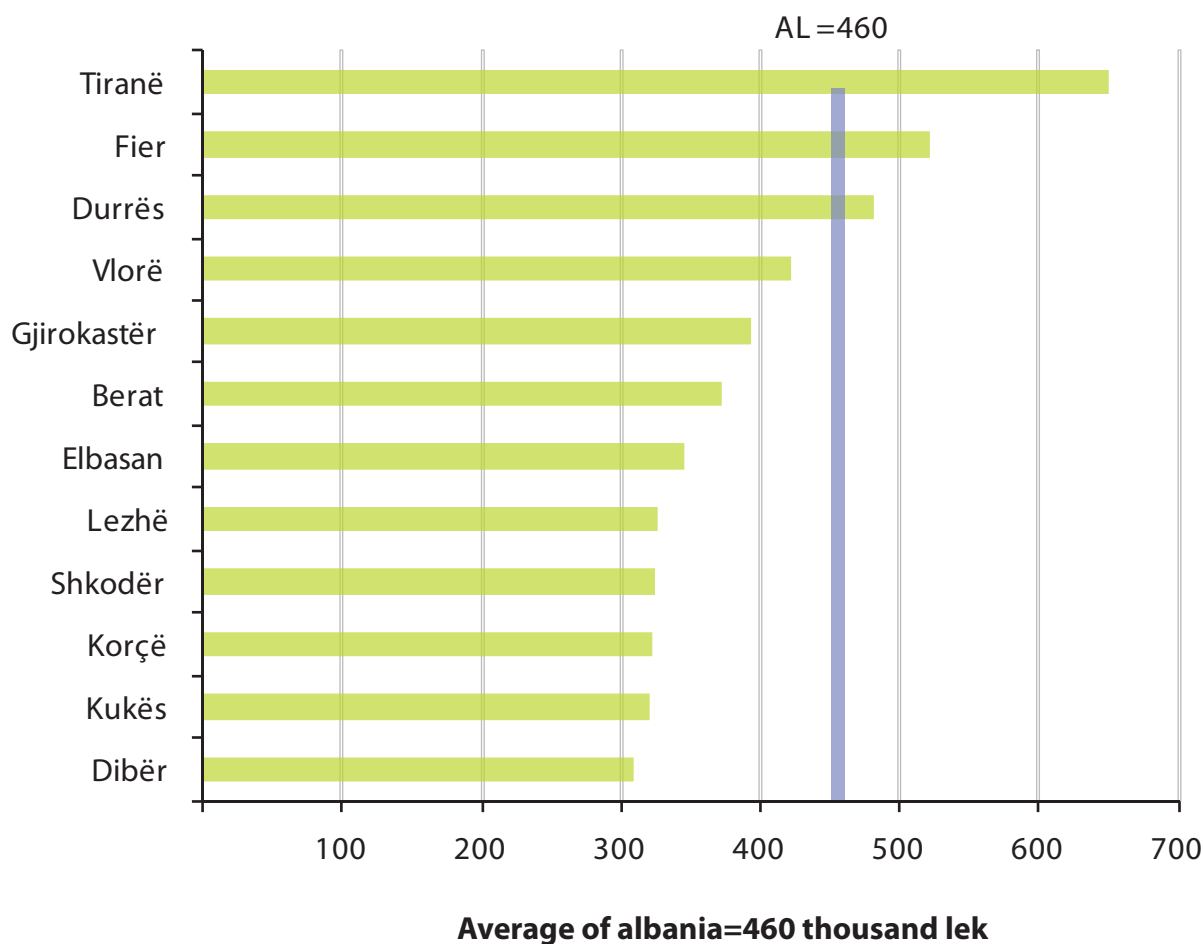
Prefectures	Growth rate of GDP			
	2009	2010	2011	2012
Republic of Albania	3.4	3.7	2.5	1.6
Dibër	4.0	7.4	-2.3	13.2
Durrës	2.9	11.3	1.3	1.2
Kukës	4.3	3.8	4.5	-4.3
Lezhë	3.0	-1.8	1.6	9.6
Shkodër	4.3	6.8	-1.7	-2.7
Elbasan	2.4	12.9	5.6	-0.8
Tiranë	3.9	0.5	1.5	2.1
Berat	3.1	6.8	4.9	-2.1
Fier	1.6	6.7	3.3	8.6
Gjirokastër	3.3	4.6	14.3	-11.3
Korçë	3.4	1.5	1.9	1.2
Vlorë	3.2	-4.5	6.8	-5.5

2.3 GDP per capita according statistical levels

In year 2012 the level of GDP per capita according to statistical region level 1 (Republic of Albania) was around 460 thousand lek. Compared to year 2011 GDP per capita has increased by 2.7%.

According statistical regions level 2, in Central region, GDP per capita in year 2012 was around 565 thousand lek or 22.7% above the national average. Compared with 2011 GDP per capita in Central region has increased by 0.9%. In North region GDP per capita in year 2012, was around 372 thousand lek or 19.3% below the national average. Compared to year 2011, GDP per capita in North Region has increased by 3.1%. In South region, GDP per capita in year 2012 was around 421 thousand lek or 8.5% below the national average. Compared to year 2011, GDP per capita in South region has increased by 5.0.

The highest level of GDP per capita in statistical regions level 3 (Prefectures) in year 2012 was in Tiranë with about 650 thousand lek or 41.1% above the national average and increased by 0.8% compared to year 2011. After is ranked prefecture Fier with around 521 thousand lek or 13.1 % above the national average and increased by 16.1% compared to year 2011. Then is ranked prefecture Durrës with about 481 thousand lek or 4.5% above the national average and increased by 0.7% compared to year 2011. GDP per capita for other prefectures was below the national average which was the lowest was in prefecture Dibër with about 310 thousand lek or 32.7% below the national average. Further, the lowest GDP per capita was in prefecture Kukës, with around 320 thousand lek or 30.5% below the national average. GDP per capita in prefecture Korçë was about 322 thousand lek, or 30.1% below the national average.



2.4 GDP per capita in PPS³ in Albania

For comparing the economic level of the EU countries the indicator of Purchasing Power Standard (PPS- Purchasing Power Standard) is used. This index is calculated by EUROSTAT according the deflators of respective countries.

Purchasing Power Standard (PPS) is an artificial currency unit that takes into consideration differences in national price levels. This unit allows meaningful volume comparisons of economic indicators for countries. Aggregates expressed in PPS are calculated by dividing aggregates (indicators) at current prices with national currency respectively Purchasing Power Parity (PPP). The volume index of GDP per capita expressed in Purchasing Power Standard (PPS) is given in relation to the average of the European Union (EU28 = 100).

Republic of Albania's GDP expressed in Purchasing Power Standard (PPS) in year 2012 was 21,790 PPS or 29.5% of the EU average EU28 = 100. According to statistical regions at level 2 in Central Region, GDP per capita in PPS in year 2012 was 36.1%, while in the North and South was respectively 23, 8% and 26, 9%.

Statistical Regions	GDB Per Capita in PPS EU28=100 in 2012
Republic of Albania	29.5
Rajone Statistikore Nuts 2	
Durrës and North	23.8
Tiranë and Elbasan	36.1
South	26.9

Please note that the index expressed in PPS is intended for cross-country comparisons rather than for temporal comparisons. For further information on the PPS coefficients follow the address:

http://epp.eurostat.ec.europa.eu/portal/page/portal/purchasing_power_parities/data/database

GDP per capita in EU year 2011

In 2011, GDP per capita, expressed in terms of purchasing power standards (PPS) in the EU28's 272 NUTS-2 regions ranged from 29% of the EU28 average in the regions of Severozapaden in Bulgaria and Nord-Est. in Romania, to 321% of the average in Inner London in the United Kingdom. The Regions are compared in NUTS 2 level. For further information follow the address below:

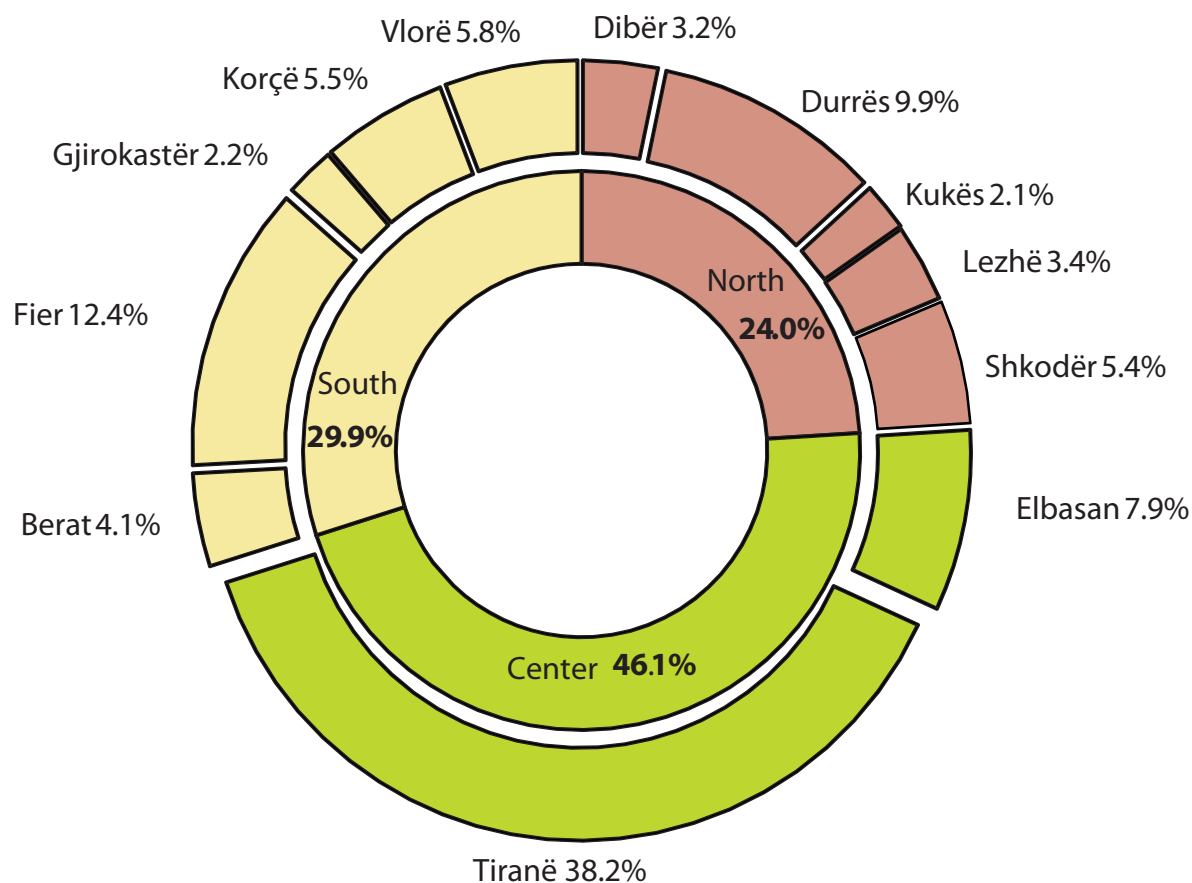
http://epp.eurostat.ec.europa.eu/cache/ITY_PUBLIC/1-27022014-AP/EN/1-27022014-AP-EN.PDF

³Purchasing Power Standard

2.5 Share of GDP by statistical regions level 2/3 year 2012

In statistical regions level 3 the lowest share of GDP compared with the national level was in prefecture Kukës and in prefecture Gjirokastër at 2.1% and 2.2%. The largest share of GDP was in Tiranë with 38.2 %. In 2012 the share of GDP for Center Region had 46.1 % of total of Albania. Share of GDP of region South was 29.9 % of total GDP. Share for region North was 24.0 % of total GDP.

Share of GDP by statistical regions level 2, 3 year 2012



2.6 Gross Value Added by branches and by prefectures

In 2012 the share of Agriculture, forestry and fishing in the generation of the national Gross Value added amounted to 21.83%. The branch agriculture, forestry and fishing increased by 0.87 percent more than in 2011.

In the individual statistical regions level 3, the shares of agriculture, forestry and fishing were ranged in 2012 from 4.71% in the prefecture Tiranë to 42.72% in the prefecture Berat. Most of the regions at statistical level 3 with the share of agriculture, forestry and fishing exceeded the national average. The prefectures with the share of agriculture, forestry and fishing in the generation of gross value added compared with the national average are presented in the table below:

Prefecture	Share of Agriculture,forestry and fishing in GVA			
	2009	2010	2011	2012
Republic of Albania	19.41	20.66	20.96	21.83
Prefecture =100				
Dibër	36.98	38.41	38.85	42.20
Durrës	14.25	14.57	14.21	16.62
Kukës	28.90	31.48	40.17	36.92
Lezhë	28.18	32.51	29.86	33.71
Shkodër	30.05	30.75	29.86	33.94
Elbasan	28.14	30.17	32.44	34.12
Tiranë	4.12	4.58	4.70	4.71
Berat	40.40	40.56	42.46	42.72
Fier	39.75	40.52	35.22	34.91
Gjirokastër	34.28	33.66	34.10	37.17
Korçë	35.83	36.01	38.70	38.71
Vlorë	24.40	24.73	27.67	27.46

Branch of Industry generated 14.43% of the national gross value added. The branch of industry increased by 0.17 % compared to 2011

Based on statistical region level 3, the share of industry ranged from 4.68 % in prefecture Gjirokastër to 33.2 % in prefecture of Fier. Regions at statistical level 3 with the shares of industrial activities exceeding the national average were: Dibër, Fier, and Durrës. The share of the generation of Gross Value Added for the branch of industry is presented in the table below:

Prefecture	Share of Industry in GVA			
	2009	2010	2011	2012
Republic of Albania	11.55	14.33	14.25	14.43
Prefecture=100				
Dibër	21.79	22.88	20.77	20.32
Durrës	12.96	15.72	16.09	15.49
Kukës	14.45	13.92	6.57	7.93
Lezhë	8.50	11.44	12.07	11.72
Shkodër	16.14	15.55	12.26	12.19
Elbasan	14.79	16.66	17.31	14.17
Tiranë	8.67	11.85	10.92	10.31
Berat	9.57	11.25	12.08	10.97
Fier	17.39	22.18	28.58	33.22
Gjirokastër	8.38	8.96	6.53	4.68
Korçë	11.64	12.70	12.20	10.75
Vlorë	9.09	12.62	11.27	11.91

Branch of Construction generated 12.15 % of the national Gross Value Added. The branch of construction decreased by 2.26 % compare to 2011.

Based on statistical region level 3, the share of construction ranged from 4.69 % in prefecture Dibër to 17.81 % in prefecture Tiranë. Regions at statistical level 3 with the shares of construction exceeding the national average were: Tiranë, Vlorë and Kukës. The prefectures with the share of construction in the generation of gross value added compared with the national average are presented in the table below:

Prefecture	Share of Construction in GVA			
	2009	2010	2011	2012
Republic of Albania	17.12	14.60	14.41	12.15
Prefecture=100				
Dibër	7.12	6.82	5.40	4.69
Durrës	13.60	11.17	10.51	7.88
Kukës	19.49	17.46	16.24	15.36
Lezhë	16.90	13.55	13.76	10.67
Shkodër	11.58	14.88	15.27	9.79
Elbasan	10.52	8.03	7.87	8.24
Tiranë	23.48	20.51	20.29	17.81
Berat	13.86	11.72	11.20	10.46
Fier	8.96	7.03	6.80	5.62
Gjirokastër	14.59	12.95	13.44	6.71
Korçë	9.00	7.82	7.66	10.11
Vlorë	21.21	16.58	18.35	12.71

Branch of Trade, hotels, transport and communication generated 21.93 % of the national Gross Value Added, 0.33 % higher than in 2011. Based on statistical region level 3, the share of this branch ranged between 7.85 % in prefecture Dibër to 33.97 % in prefecture Durrës. Regions at statistical level 3 with the shares of trade, hotels, transportation and communication exceeding the national average were: Tiranë and Durrës. The prefectures with the share of Branch of Trade, hotels, transport and communication in the generation of gross value added compared with the national average are presented in the table below:

Prefecture	Share of Trade, hotelierisë, transport, communication in GVA			
	2009	2010	2011	2012
Republic of Albania	23.10	21.63	21.60	21.93
Prefecture =100				
Dibër	10.56	8.18	8.32	7.85
Durrës	33.39	30.73	33.50	33.97
Kukës	13.15	13.01	11.44	11.08
Lezhë	19.87	14.77	15.55	16.90
Shkodër	14.66	11.68	13.18	12.68
Elbasan	20.95	22.86	20.16	19.82
Tiranë	28.16	28.44	28.42	29.74
Berat	16.25	13.89	13.86	14.18
Fier	16.12	12.59	12.17	10.32
Gjirokastrë	19.77	14.83	14.16	14.60
Korçë	16.03	13.91	13.09	12.12
Vlorë	19.11	15.14	15.86	18.46

Branch of Financial activities, real estate and business activities generated 13.77 % of the national Gross Value Added. This branch increased by 0.52 % in comparison to 2011.

Based on statistical region level 3, the share of financial, real estate and business activities ranged between 6.62 % in prefecture Dibër and 19.98 % in prefecture Tiranë. According statistical regions level 3 prefecture of Tiranë and Gjirokastër exceeded the national average. The prefectures with the share of Branch of Financial activities, real estate and business activities in the generation of gross value added compared with the national average are presented in the table below:

Prefecture	Share Financial, Real estate and Business activities in GVA			
	2009	2010	2011	2012
Republic of Albania	13.73	13.17	13.25	13.77
Prefecture =100				
Dibër	5.19	4.71	7.44	6.91
Durrës	15.21	13.80	12.75	13.37
Kukës	5.63	5.89	7.49	8.56
Lezhë	10.82	9.88	11.84	10.97
Shkodër	9.78	10.31	12.44	12.37
Elbasan	8.17	7.08	7.48	7.51
Tiranë	19.46	19.42	18.65	19.98
Berat	5.59	5.16	6.12	6.62
Fier	7.92	7.34	7.87	7.45
Gjirokastër	9.25	8.22	12.59	13.88
Korçë	9.50	9.01	9.55	9.28
Vlorë	12.70	13.02	12.70	13.45

Branch of other services, including Public Administration and Defense; generated 15.89% of the national Gross Value Added, 0.4 % higher than in 2011

Based on statistical region level 3, the share of this branch ranged between 8.48 % in Fier and 22.96 % in prefecture Gjirokaštër. Most of the regions at statistical level 3 with the share of other services in were at the same level with the national average. The prefectures with the share of Branch of other services in the generation of gross value added compared with the national average are presented in the table below:

Prefecture	Share of Other Services in GVA			
	2009	2010	2011	2012
Republic of Albania	15.08	15.62	15.52	15.89
Prefecture =100				
Dibër	18.36	19.01	19.22	18.04
Durrës	10.58	14.02	12.95	12.66
Kukës	18.37	18.24	18.10	20.15
Lezhë	15.74	17.85	16.91	16.03
Shkodër	17.78	16.83	16.99	19.04
Elbasan	17.43	15.21	14.74	16.14
Tiranë	16.12	15.19	17.02	17.44
Berat	14.32	17.41	14.28	15.06
Fier	9.87	10.33	9.36	8.48
Gjirokaštër	13.73	21.37	19.18	22.96
Korçë	18.00	20.55	18.80	19.03
Vlorë	13.49	17.90	14.14	16.02

2.7 Unique Position of Tirana in the Republic of Albania

The Albanian Capital Tirana among 12 administrative regions has a key position. Here are allocated the majority of government institutions and headquarters of the majority of multiregional⁴ companies. In 2012, 27.07 percent of the population lived in Tirana with 38.2 percent of the national GDP. GDP per capita was 41.1 percent above the average.

Some of the main factors are:

- The concentration gross value added of construction branch
- The concentration of the services sector (banking, insurance, and telecommunications)
- High compensation of employees
- High rate of commuting from other prefectures.⁵

2.8 Diversity of statistical regions

Statistical Regions in Albania North, Center and South have different demographic characteristics, industrial structure and economic performance.

Region North has 37.9% of Albanian territory, the second largest area with a population of 29.73 % of the total. Region Center has 16.9% of Albanian territory, but the largest percentage of population at 37.55 % of the total while region South has the largest area at 45.2 % with a population of 32.72 % of the total.

These variations in regional populations are reflected in the size of regional GVA and income. The wide variation in the size of the regions makes it difficult to compare the regional economic performance using absolute values. The diversity is measured by using terms of amounts per capita of population.

Economic growth may have variation from growth per capita in regions where population has increased or decreased. For detail see the table presented below:

⁴ Enterprises that have activities in more than one prefecture

⁵ Commuters - People who work in one area and live in another ex. Tirana and Durrës

Regional Indicators year 2012

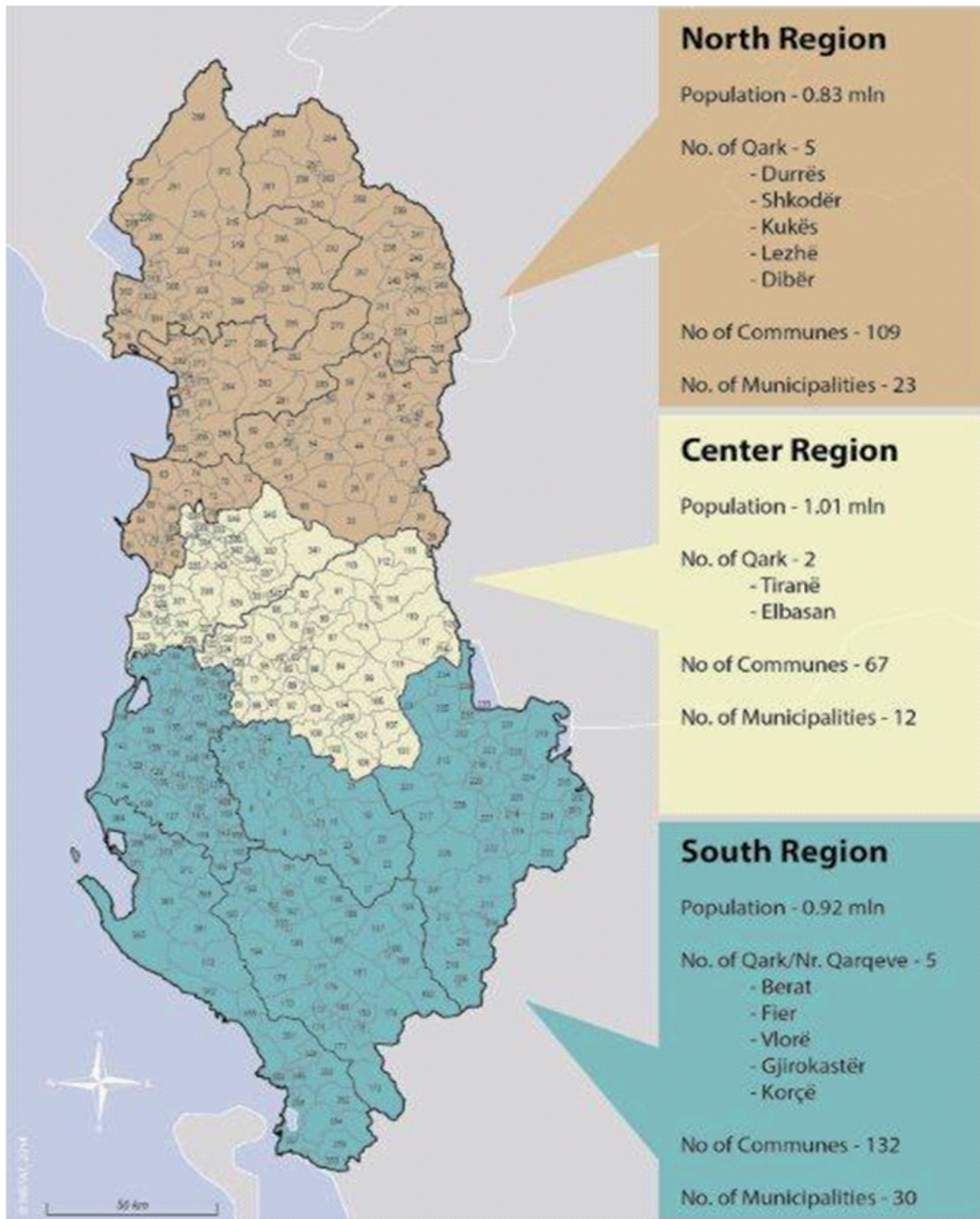
Statistical Regions		Surface	Average Population 2012 ⁶	Density of population
		km ²	nr	in habitant/km ²
Level 1	Albania	28,748	2,900,486	100.9
			AI=100%	
Level 2	North	37.90%	29.73%	79.1
	Center	16.90%	37.55%	224.5
	South	45.20%	32.72%	73.1
Level 3				
North	Dibër	9.00%	4.81%	54.0
	Durrës	2.70%	9.48%	358.8
	Kukës	8.30%	3.01%	36.7
	Lezhë	5.60%	4.78%	85.6
	Shkodër	12.40%	7.65%	62.3
Center	Elbasan	11.10%	10.49%	95.1
	Tiranë	5.70%	27.07%	475.2
South	Berat	6.30%	5.03%	81.2
	Fier	6.60%	11.00%	168.9
	Gjirokastër	10.00%	2.56%	25.7
	Korçë	12.90%	7.82%	61.1
	Vlorë	9.40%	6.30%	67.6

⁶ Average population is the average between two consequent years beginning population : 1/1/2012 and 1/1/2013

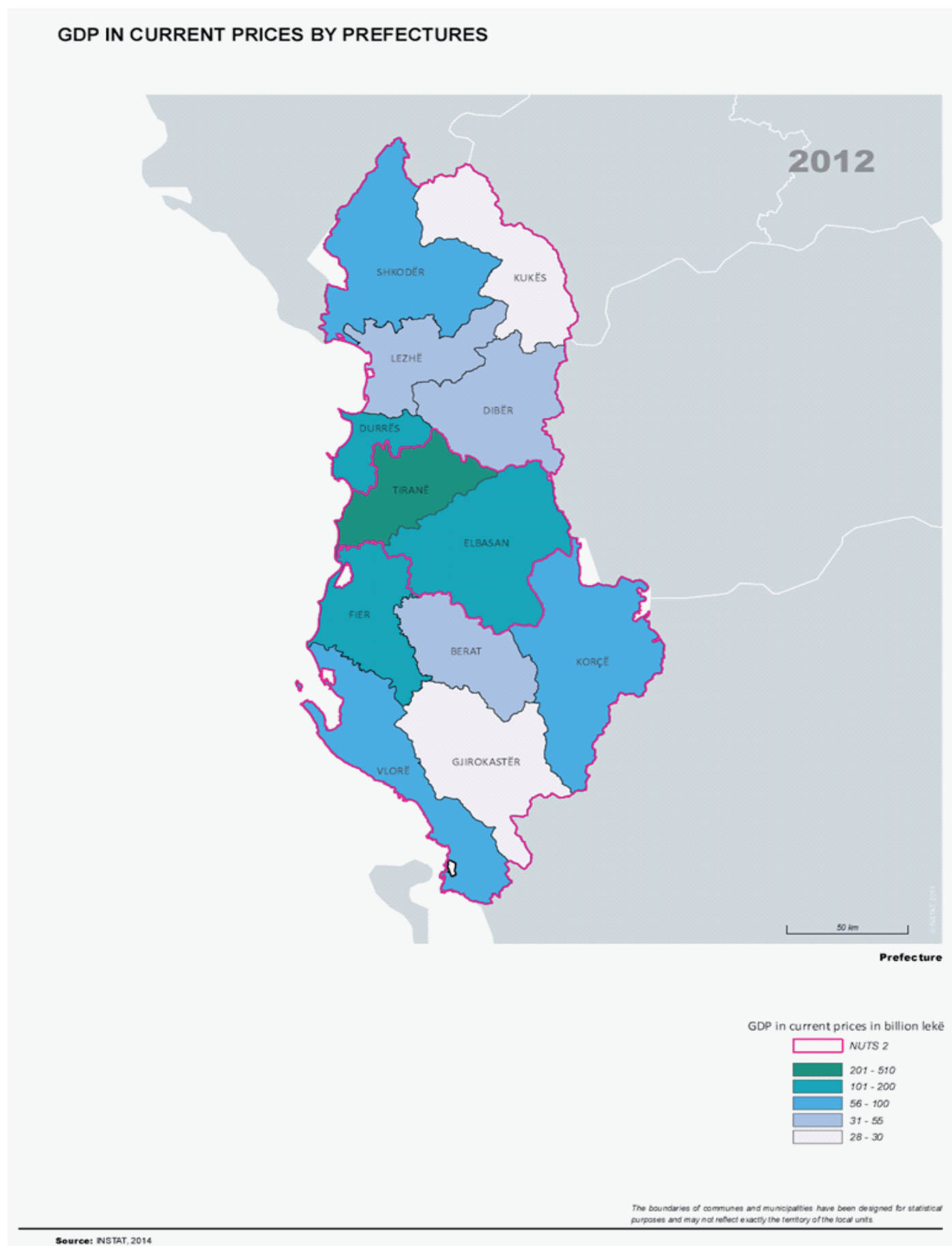
Annexes

Annex A: Maps

Annex A.1. Geographical distribution by Statistical Regions level 2 (NUTS2)



Annex A.2. GDP in current prices by Statistical Regions level 3 (NUTS3)



Annex A.2. GDP in current prices by Statistical Regions level 3 (NUTS3)

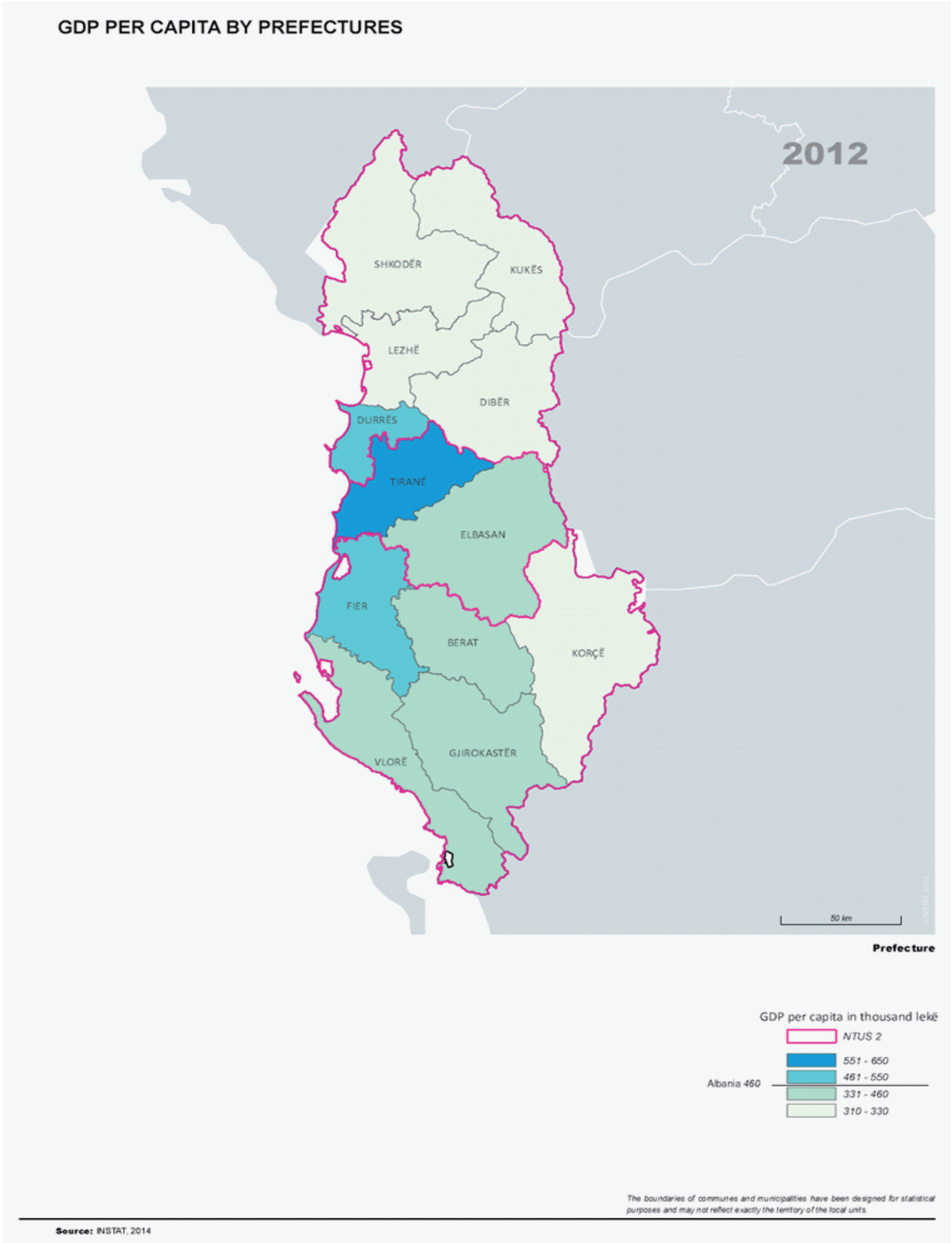


Table B.1. Gross Value Added by Statistical Regions level 1, 2, 3 years 2008-2012*in Mn. Lek*

Code	Regional Levels	2008	2009	2010	2011	2012*
AL	The Republic of Albania	936,917	989,796	1,077,485	1,131,121	1,157,377
AL01	<i>North</i>	221,411	236,724	266,491	271,558	277,755
AL011	Dibër	27,442	29,581	33,710	33,197	37,470
AL012	Durrës	89,229	94,938	109,731	112,989	114,579
AL013	Kukës	20,237	21,737	23,989	25,376	24,177
AL014	Lezhë	31,756	33,631	34,665	35,912	39,301
AL015	Shkodër	52,747	56,837	64,396	64,084	62,228
AL02	<i>Center</i>	447,898	474,632	504,342	524,828	533,272
AL021	Elbasan	68,694	73,294	86,749	92,060	91,209
AL022	Tiranë	379,204	401,338	417,592	432,767	442,063
AL03	<i>South</i>	267,608	278,440	306,652	334,735	346,350
AL031	Berat	37,015	39,098	44,128	47,477	46,964
AL032	Fier	96,066	96,827	113,752	125,797	144,053
AL033	Gjirokastër	20,942	22,102	24,242	28,240	25,213
AL034	Korçë	52,629	56,225	59,968	62,437	63,231
AL035	Vlorë	60,956	64,189	64,562	70,784	66,889

*Evaluation for the year 2012 are based on semi-final estimation of GDP

Table B.2. Gross Domestic Product in current prices*in Mn. Lek*

Code	Regional Levels	2008	2009	2010	2011	2012*
AL	The Republic of Albania	1,080,676	1,143,937	1,239,645	1,300,624	1,335,489
AL01	<i>North</i>	255,793	273,588	306,598	312,252	320,499
AL011	Dibër	31,739	34,187	38,784	38,171	43,236
AL012	Durrës	103,018	109,722	126,245	129,921	132,212
AL013	Kukës	23,394	25,122	27,600	29,179	27,898
AL014	Lezhë	36,640	38,868	39,882	41,294	45,349
AL015	Shkodër	61,002	65,688	74,088	73,687	71,805
AL02	<i>Center</i>	516,834	548,546	580,245	603,475	615,338
AL021	Elbasan	79,339	84,708	99,805	105,856	105,245
AL022	Tiranë	437,495	463,838	480,440	497,619	510,093
AL03	<i>South</i>	308,049	321,802	352,802	384,897	399,651
AL031	Berat	42,694	45,187	50,769	54,592	54,192
AL032	Fier	110,129	111,906	130,871	144,648	166,222
AL033	Gjirokastër	24,152	25,544	27,890	32,472	29,093
AL034	Korçë	60,795	64,981	68,993	71,794	72,962
AL035	Vlorë	70,279	74,185	74,278	81,391	77,182

*Evaluation for the year 2012 are based on semi-final estimation of GDP

Table B.3. Gross Domestic Product at prices of previous year

in Mn. Lek

Code	Regional Levels	2009	2010	2011	2012*
AL	The Republic of Albania	1,116,925	1,186,342	1,271,198	1,321,742
AL01	<i>North</i>	264,798	293,252	307,975	319,588
AL011	Dibër	33,012	36,722	37,882	43,211
AL012	Durrës	106,044	122,117	127,874	131,452
AL013	Kukës	24,389	26,077	28,854	27,933
AL014	Lezhë	37,736	38,169	40,536	45,262
AL015	Shkodër	63,618	70,167	72,827	71,731
AL02	<i>Center</i>	535,898	561,897	593,223	613,281
AL021	Elbasan	81,266	95,655	105,381	105,012
AL022	Tiranë	454,632	466,242	487,842	508,268
AL03	<i>South</i>	316,229	331,192	370,001	388,873
AL031	Berat	43,998	48,273	53,276	53,452
AL032	Fier	111,861	119,365	135,219	157,058
AL033	Gjirokastër	24,951	26,723	31,874	28,812
AL034	Korçë	62,892	65,986	70,280	72,638
AL035	Vlorë	72,527	70,845	79,352	76,912

*Evaluation for the year 2012 are based on semi-final estimation of GDP

Table B.4. Gross Domestic Product in Euro

in Mn. Euro

Code	Regional Levels	2008	2009	2010	2011	2012*
AL	The Republic of Albania	8,798,1	8,660,9	8,999,2	9,268,3	9,607,8
AL01	<i>North</i>	2,082.5	2,071.4	2,225.8	2,225.1	2,305.8
AL011	Dibër	258.4	258.8	281.6	272.0	311.0
AL012	Durrës	838.7	830.7	916.5	925.8	951.2
AL013	Kukës	190.5	190.2	200.4	207.9	200.7
AL014	Lezhë	298.3	294.3	289.5	294.3	326.3
AL015	Shkodër	496.6	497.3	537.8	525.1	516.6
AL02	<i>Center</i>	4,207.7	4,153.1	4,212.3	4,300.4	4,426.9
AL021	Elbasan	645.9	641.3	724.5	754.3	757.2
AL022	Tiranë	3,561.8	3,511.8	3,487.8	3,546.1	3,669.7
AL03	<i>South</i>	2,507.9	2,436.4	2,561.2	2,742.8	2,875.2
AL031	Berat	347.6	342.1	368.6	389.0	389.9
AL032	Fier	896.6	847.3	950.1	1,030.8	1,195.8
AL033	Gjirokastrë	196.6	193.4	202.5	231.4	209.3
AL034	Korçë	495.0	492.0	500.9	511.6	524.9
AL035	Vlorë	572.2	561.7	539.2	580.0	555.3

*Evaluation for the year 2012 are based on semi-final estimation of GDP

Table B.5. Gross Domestic Product in PPS

in PPS

Code	Regional Levels	2008	2009	2010	2011	2012*
AL	The Republic of Albania	20,172	20,560	20,651	21,522	21,790
AL01	<i>North</i>	4,775	4,917	5,108	5,167	5,229
AL011	Dibër	592	614	646	632	705
AL012	Durrës	1,923	1,972	2,103	2,115	2,157
AL013	Kukës	437	452	460	483	455
AL014	Lezhë	684	699	664	683	740
AL015	Shkodër	1,139	1,181	1,234	1,219	1,172
AL02	<i>Center</i>	9,647	9,859	9,666	9,986	10,040
AL021	Elbasan	1,481	1,522	1,663	1,752	1,717
AL022	Tiranë	8,166	8,337	8,004	8,234	8,323
AL03	<i>South</i>	5,75	5,784	5,877	6,369	6,521
AL031	Berat	797	812	846	903	884
AL032	Fier	2,056	2,011	2,180	2,394	2,712
AL033	Gjirokastër	451	459	465	537	475
AL034	Korçë	1,135	1,168	1,149	1,188	1,190
AL035	Vlorë	1,312	1,333	1,237	1,347	1,259

*Evaluation for the year 2012 are based on semi-final estimation of GDP

Table B.6. Growth rate of GDP

in Percentage

Code	Regional Levels	2009	2010	2011	2012*
AL	The Republic of Albania	3.4	3.7	2.5	1.6
AL01	<i>North</i>	3.5	7.2	0.4	2.3
AL011	Dibër	4.0	7.4	-2.3	13.2
AL012	Durrës	2.9	11.3	1.3	1.2
AL013	Kukës	4.3	3.8	4.5	-4.3
AL014	Lezhë	3.0	-1.8	1.6	9.6
AL015	Shkodër	4.3	6.8	-1.7	-2.7
AL02	<i>Center</i>	3.7	2.4	2.2	1.6
AL021	Elbasan	2.4	12.9	5.6	-0.8
AL022	Tiranë	3.9	0.5	1.5	2.1
AL03	<i>South</i>	2.7	2.9	4.9	1.0
AL031	Berat	3.1	6.8	4.9	-2.1
AL032	Fier	1.6	6.7	3.3	8.6
AL033	Gjirokastër	3.3	4.6	14.3	-11.3
AL034	Korçë	3.4	1.5	1.9	1.2
AL035	Vlorë	3.2	-4.5	6.8	-5.5

*Evaluation for the year 2012 are based on semi-final estimation of GDP

Table B.7. Average Population in Albania

inhabitant

Code	Regional Levels	2008	2009	2010	2011	2012
AL	The Republic of Albania	2,947,311	2,927,515	2,913,018	2,904,776	2,900,486
AL01	<i>North</i>	889,875	879,495	871,745	866,516	862,329
AL011	Dibër	155,393	150,430	146,135	142,491	139,619
AL012	Durrës	261,626	264,253	267,712	272,021	274,865
AL013	Kukës	94,965	92,426	90,313	88,620	87,198
AL014	Lezhë	144,053	141,812	140,244	139,363	138,671
AL015	Shkodër	233,837	230,573	227,342	224,021	221,977
AL02	<i>Center</i>	1,041,095	1,051,296	1,063,664	1,078,330	1,089,205
AL021	Elbasan	317,930	312,208	308,298	306,039	304,130
AL022	Tiranë	723,165	739,087	755,366	772,291	785,075
AL03	<i>South</i>	1,016,341	996,724	977,609	959,929	948,952
AL031	Berat	160,059	155,338	151,375	148,160	145,942
AL032	Fier	339,498	333,367	327,621	322,540	319,159
AL033	Gjirokastër	87,614	84,061	80,321	76,562	74,173
AL034	Korçë	238,891	235,363	232,041	228,794	226,805
AL035	Vlorë	190,278	188,595	186,251	183,873	182,873

*Evaluation for the year 2012 are based on semi-final estimation of GDP

Table B.8. Gross Domestic Product per Capita, in Lek

in Lek

Code	Regional Levels	2008	2009	2010	2011	2012*
AL	The Republic of Albania	366,665	390,754	425,554	447,754	460,436
AL01	<i>North</i>	287,448	311,075	351,706	360,353	371,667
AL011	Dibër	204,248	227,262	265,396	267,885	309,670
AL012	Durrës	393,760	415,217	471,571	477,615	481,007
AL013	Kukës	246,346	271,812	305,599	329,255	319,935
AL014	Lezhë	254,351	274,083	284,376	296,302	327,027
AL015	Shkodër	260,872	284,891	325,888	328,928	323,480
AL02	<i>Center</i>	496,433	521,781	545,515	559,639	564,942
AL021	Elbasan	249,550	271,319	323,729	345,890	346,054
AL022	Tiranë	604,972	627,582	636,036	644,342	649,737
AL03	<i>South</i>	303,096	322,860	360,883	400,964	421,150
AL031	Berat	266,736	290,892	335,387	368,464	371,324
AL032	Fier	324,389	335,683	399,460	448,466	520,813
AL033	Gjirokastrë	275,667	303,871	347,230	424,125	392,225
AL034	Korçë	254,490	276,087	297,333	313,791	321,697
AL035	Vlorë	369,347	393,356	398,808	442,650	422,054

*Evaluation for the year 2012 are based on semi-final estimation of GDP

Table B.9. Gross Domestic Product per Capita, in Euro

in Euro

Code	Regional Levels	2008	2009	2010	2011	2012*
AL	The Republic of Albania	2,985	2,958	3,089	3,191	3,312
AL01	<i>North</i>	2,340	2,355	2,553	2,568	2,674
AL011	Dibër	1,663	1,721	1,927	1,909	2,228
AL012	Durrës	3,206	3,144	3,423	3,404	3,460
AL013	Kukës	2,006	2,058	2,219	2,346	2,302
AL014	Lezhë	2,071	2,075	2,064	2,111	2,353
AL015	Shkodër	2,124	2,157	2,366	2,344	2,327
AL02	<i>Center</i>	4,042	3,950	3,960	3,988	4,064
AL021	Elbasan	2,032	2,054	2,350	2,465	2,490
AL022	Tiranë	4,925	4,752	4,617	4,592	4,674
AL03	<i>South</i>	2,468	2,444	2,620	2,857	3,030
AL031	Berat	2,172	2,202	2,435	2,626	2,671
AL032	Fier	2,641	2,542	2,900	3,196	3,747
AL033	Gjirokastër	2,244	2,301	2,521	3,022	2,822
AL034	Korçë	2,072	2,090	2,159	2,236	2,314
AL035	Vlorë	3,007	2,978	2,895	3,154	3,036

*Evaluation for the year 2012 are based on semi-final estimation of GDP

Table B.10. Gross Domestic Product per Capita, in PPS

in PPS

Code	Regional Levels	2008	2009	2010	2011	2012*
AL	The Republic of Albania	6,844	7,023	7,089	7,409	7,513
AL01	<i>North</i>	5,366	5,591	5,859	5,963	6,064
AL011	Dibër					
AL012	Durrës					
AL013	Kukës					
AL014	Lezhë					
AL015	Shkodër					
AL02	<i>Center</i>	9,267	9,378	9,088	9,260	9,218
AL021	Elbasan					
AL022	Tiranë					
AL03	<i>South</i>	5,658	5,803	6,012	6,635	6,872
AL031	Berat					
AL032	Fier					
AL033	Gjirokastër					
AL034	Korçë					
AL035	Vlorë					

*Evaluation for the year 2012 are based on semi-final estimation of GDP

Table B.11. Gross Domestic Product per Capita, AL=100

in Percentage

Code	Regional Levels	2008	2009	2010	2011	2012*
AL	The Republic of Albania	100	100	100	100	100
AL01	<i>North</i>	78.4	79.6	82.6	80.5	80.7
AL011	Dibër	55.7	58.2	62.4	59.8	67.3
AL012	Durrës	107.4	106.3	110.8	106.7	104.5
AL013	Kukës	67.2	69.6	71.8	73.5	69.5
AL014	Lezhë	69.4	70.1	66.8	66.2	71.0
AL015	Shkodër	71.1	72.9	76.6	73.5	70.3
AL02	<i>Center</i>	135.4	133.5	128.2	125.0	122.7
AL021	Elbasan	68.1	69.4	76.1	77.3	75.2
AL022	Tiranë	165.0	160.6	149.5	143.9	141.1
AL03	<i>South</i>	82.7	82.6	84.8	89.6	91.5
AL031	Berat	72.7	74.4	78.8	82.3	80.6
AL032	Fier	88.5	85.9	93.9	100.2	113.1
AL033	Gjirokastër	75.2	77.8	81.6	94.7	85.2
AL034	Korçë	69.4	70.7	69.9	70.1	69.9
AL035	Vlorë	100.7	100.7	93.7	98.9	91.7

**Evaluation for the year 2012 are based on semi-final estimation of GDP*

Table B.12. Gross Domestic Product per Capita, EU28=100

in Percentage

Code	Regional Levels	2008	2009	2010	2011	2012
AL	The Republic of Albania	27.4	29.9	29.1	29.5	29.5
AL01	<i>North</i>	21.5	23.8	24.0	23.8	23.8
AL011	Dibër					
AL012	Durrës					
AL013	Kukës					
AL014	Lezhë					
AL015	Shkodër					
AL02	<i>Center</i>	37.1	39.9	37.2	36.9	36.1
AL021	Elbasan					
AL022	Tiranë					
AL03	<i>South</i>	22.6	24.7	24.6	26.4	26.9
AL031	Berat					
AL032	Fier					
AL033	Gjirokastër					
AL034	Korçë					
AL035	Vlorë					

**Evaluation for the year 2012 are based on semi-final estimation of GDP*

Table B.13. Share of statistical regions in Gross Value Added for year, 2012* (Branch=100%)

in Percentage

Code	Regional Levels	Agriculture and Fishing	Industry	Extracting	Manufacturing	Construction	Services	Trade Hotels and Restaurants	Transport	Post and communication	Other Services	GVA at basic prices
AL	The Republic of Albania	100.0	100.0	100.0	100.0	100.0	100.0	100.0	100.0	100.0	100.0	100.0
AL01	North	30.9	23.6	15.8	28.7	17.6	22.7	18.7	47.0	16.1	22.2	24.0
AL011	Dibër	6.3	4.6	8.1	2.3	1.2	2.1	1.1	0.4	2.2	2.7	3.2
AL012	Durrës	7.6	10.6	2.3	16.0	6.4	11.5	11.4	38.6	5.7	8.7	9.9
AL013	Kukës	3.5	1.1	0.3	1.7	2.6	1.6	0.9	1.1	1.8	2.0	2.1
AL014	Lezhë	5.3	2.8	3.8	2.1	3.0	2.9	2.3	3.9	2.5	3.1	3.4
AL015	Shkodër	8.3	4.5	1.2	6.6	4.3	4.6	3.0	3.0	3.9	5.7	5.3
AL02	Center	20.5	35.0	13.0	49.1	61.3	56.3	63.5	37.2	63.2	54.4	46.0
AL021	Elbasan	12.3	7.7	2.3	11.2	5.3	6.6	8.5	4.1	4.0	6.3	7.8
AL022	Tiranë	8.2	27.3	10.7	37.9	56.0	49.7	55.0	33.1	59.2	48.2	38.2
AL03	South	48.6	41.4	71.2	22.2	21.1	21.0	17.8	15.8	20.7	23.4	3.0
AL031	Berat	7.9	3.1	2.2	3.7	3.5	2.8	2.5	2.4	3.4	3.0	4.1
AL032	Fier	19.9	28.7	61.1	7.9	5.8	6.3	6.5	4.0	4.8	6.7	12.4
AL033	Gjirokastrë	3.7	0.7	0.1	1.1	1.2	2.2	1.0	1.9	3.0	2.7	2.2
AL034	Korçë	9.7	4.1	0.6	6.3	4.5	4.3	3.3	1.2	4.0	5.2	5.5
AL035	Vlorë	7.3	4.8	7.2	3.3	6.1	5.4	4.5	6.2	5.5	5.8	5.8

**Evaluation for the year 2012 are based on semi-final estimation of GDP*

Table B.14. Share of statistical regions in Gross Value Added for year, 2012* (Region=100)

in Percentage

Code	Regional Levels	Agriculture and Fishing	Industry	Extracting	Manufacturing	Construction	Services	Trade Hotels and Restaurants	Transport	Post and Communication	Other Services	GVA at basic prices
AL	The Republic of Albania	21.8	14.4	5.6	8.8	12.2	51.6	15.1	3.8	3.0	29.7	100.0
AL01	<i>North</i>	28.1	14.2	3.7	10.5	8.9	48.7	11.8	7.5	2.0	27.5	100.0
AL011	Dibër	42.2	20.3	14.1	6.2	4.7	32.8	5.3	0.5	2.1	24.9	100.0
AL012	Durrës	16.6	15.5	1.3	14.2	7.9	60	17.4	14.8	1.7	26.0	100.0
AL013	Kukës	36.9	7.9	0.8	7.1	15.4	39.8	6.5	1.9	2.7	28.7	100.0
AL014	Lezhë	33.7	11.7	6.3	5.5	10.7	43.9	10.3	4.4	2.2	27.0	100.0
AL015	Shkodër	33.9	12.2	1.3	10.9	9.8	44.1	8.4	2.1	2.2	31.4	100.0
AL02	<i>Center</i>	9.7	11.0	1.6	9.4	16.2	63.1	20.9	3.1	4.1	35.1	100.0
AL021	Elbasan	34.1	14.2	1.6	12.6	8.2	43.5	16.3	2.0	1.5	23.6	100.0
AL022	Tiranë	4.7	10.3	1.6	8.7	17.8	67.2	21.8	3.3	4.6	37.4	100.0
AL03	<i>South</i>	35.4	19.9	13.4	6.5	8.6	36.2	9.0	2.0	2.1	23.1	100.0
AL031	Berat	42.7	11.0	3.0	8.0	10.5	35.9	9.3	2.3	2.5	21.7	100.0
AL032	Fier	34.9	33.2	27.7	5.6	5.6	26.2	8.0	1.2	1.2	15.9	100.0
AL033	Gjirokastrë	37.2	4.7	0.2	4.5	6.7	51.4	7.1	3.3	4.1	36.8	100.0
AL034	Korçë	38.7	10.8	0.6	10.1	10.1	40.4	9.1	0.8	2.2	28.3	100.0
AL035	Vlorë	27.5	11.9	7.0	4.9	12.7	47.9	11.6	4.1	2.8	29.5	100.0

**Evaluation for the year 2012 are based on semi-final estimation of GDP*

Table B.15. Statistical Region Durrës and North

Regional Indicator		Mesasuring Units	2008	2009	2010	2011	2012*
Gross Value Added		Mn. Lek	221,411	236,724	266,491	271,558	277,755
A+B	Agriculture, hunting and forestry, Fishing	%	24.5	24.2	25.3	25.4	28.1
C+D+E	Industry	%	13.4	14.3	15.9	14.3	14.2
F	Construction	%	14.2	13.3	12.4	12.0	8.9
G+H+I	Wholesale and retail trade, repair of motor vehicles and household, hotels and rest, transport and comm,	%	22.8	22.3	19.6	21.2	21.3
J+K	Financial, real-estate, renting and business activities	%	11.6	11.2	10.6	11.4	11.5
L to P	Other service activities	%	13.6	14.7	16.2	15.7	15.9
Gross Domestic Product, in current prices		Mn. Lek	255,793	273,588	306,598	312,252	320,499
		Mn. Euro	2,082	2,071	2,226	2,225	2,306
		PPS	4,775	4,917	5,108	5,167	5,229
Gross Domestic Product, AL = 100		%	23.67	23.92	24.73	24.01	24.00
GDP, in basic price		Mn. Lek		264,798	293,252	307,975	319,588
Growth Rate of Regional GDP		%		3.5	7.2	0.4	2.3
GDP per capita		Lek	287,448	311,075	351,706	360,353	371,667
		Euro	2,340	2,355	2,553	2,568	2,674
		PPS	5,366	5,591	5,859	5,963	6,064
GDP per capita, AL = 100		%	78.40	79.61	82.65	80.48	80.72
GDP per capita in PPS, EU28 = 100		%	21.46	23.79	24.01	23.76	23.78

*Evaluation for the year 2012 are based on semi-final estimation of GDP

Table B.16. Statistical Region Center

Regional Indicator		Measuring Units	2008	2009	2010	2011	2012
Gross Value Added		Mn. Lek	447,898	474,632	504,342	524,828	533,272
A+B	Agriculture, hunting and forestry, Fishing	%	7.9	7.8	9.0	9.6	9.7
C+D+E	Industry	%	9.0	9.6	12.7	12.0	11.0
F	Construction	%	22.7	21.5	18.4	18.1	16.2
G+H+I	Wholesale and retail trade, repair of motor vehicles and household, hotels and rest, transport and comm.	%	27.6	27.0	27.5	27.0	28.0
J+K	Financial, real-estate, renting and business activities	%	18.0	17.7	17.3	16.7	17.9
L to P	Other service activities	%	14.9	16.3	15.2	16.6	17.2
Gross Domestic Product, in current prices		Mn. Lek	516,834	548,546	580,245	603,475	615,338
		Mn. Euro	4,208	4,153	4,212	4,300	4,427
		PPS	9,647	9,859	9,666	9,986	10,040
Gross Domestic Product, AL = 100		%	47.83	47.95	46.81	46.40	46.08
GDP, in basic price		Mn. Lekë		535,898	561,897	593,223	613,281
Growth Rate of Regional GDP		%		3.7	2.4	2.2	1.6
GDP per capita		Lek	496,433	521,781	545,515	559,639	564,942
		Euro	4,042	3,950	3,960	3,988	4,064
		PPS	9,267	9,378	9,088	9,260	9,218
GDP per capita. AL = 100		%	135.39	133.53	128.19	124.99	122.70
GDP per capita in PPS, EU28 = 100		%	37.07	39.91	37.24	36.89	36.15

**Evaluation for the year 2012 are based on semi-final estimation of GDP*

Table B.17. Statistical Region South

Regional Indicator		Measuring Units	2008	2009	2010	2011	2012
Gross Value Added		Mn. Lek	267,608	278,440	306,652	334,735	346,350
A+B	Agriculture, hunting and forestry, Fishing	%	34.6	35.1	35.8	35.2	35.4
C+D+E	Industry	%	13.7	12.5	15.7	17.7	19.9
F	Construction	%	13.4	12.9	10.3	10.6	8.6
G+H+I	Wholesale and retail trade, repair of motor vehicles and household, hotels and rest, transport and comm.	%	17.1	17.1	13.7	13.5	13.1
J+K	Financial, real-estate, renting and business activities	%	9.4	9.1	8.6	9.4	9.3
L to P	Other service activities	%	11.9	13.3	15.8	13.7	13.8
Gross Domestic Product, in current prices		Mn. Lek	308,049	321,802	352,802	384,897	399,651
		Mn. Euro	2,508	2,436	2,561	2,743	2,875
		PPS	9,647	9,859	9,666	9,986	10,040
Gross Domestic Product, AL = 100		%	28.51	28.13	28.46	29.59	29.93
GDP, in basic price		Mn. Lek		316,229	331,192	370,001	388,873
Growth Rate of Regional GDP		%		2.7	2.9	4.9	1.0
GDP per capita		Lek	303,096	322,860	360,883	400,964	421,150
		Euro	2,468	2,444	2,620	2,857	3,030
		PPS	5,658	5,803	6,012	6,635	6,872
GDP per capita, AL = 100		%	82.66	82.62	84.80	89.55	91.47
GDP per capita in PPS, EU28 = 100		%	37.07	39.91	37.24	36.89	36.15

**Evaluation for the year 2012 are based on semi-final estimation of GDP*

Table B.18. Prefecture Dibër

Regional Indicator		Measuring Units	2008	2009	2010	2011	2012
Gross Value Added		Mn. Lek	27,442	29,581	33,710	33,197	37,470
A+B	Agriculture, hunting and forestry, Fishing	%	37.7	37.0	38.4	38.9	42.2
C+D+E	Industry	%	21.1	21.8	22.9	20.8	20.3
F	Construction	%	7.6	7.1	6.8	5.4	4.7
G+H+I	Wholesale and retail trade, repair of motor vehicles and household, hotels and rest, transport and comm.	%	11.0	10.6	8.2	8.3	7.8
J+K	Financial, real-estate, renting and business activities	%	5.5	5.2	4.7	7.4	6.9
L to P	Other service activities	%	17.0	18.4	19.0	19.2	18.0
Gross Domestic Product, in current prices		Mn. Lek	31,739	34,187	38,784	38,171	43,236
		Mn. Euro	258	259	282	272	311
		PPS	592	614	646	632	705
Gross Domestic Product, AL = 100		%	2.94	2.99	3.13	2.93	3.24
GDP, in basic price		Mn. Lek		33,012	36,722	37,882	43,211
Growth Rate of Regional GDP		%		4.0	7.4	-2.3	13.2
GDP per capita		Lek	204,248	227,262	265,396	267,885	309,670
		Euro	1,663	1,721	1,927	1,909	2,228
		PPS					
GDP per capita, AL = 100		%	55.70	58.16	62.36	59.83	67.26
GDP per capita in PPS, EU28 = 100		%					

**Evaluation for the year 2012 are based on semi-final estimation of GDP*

Table B.19. Prefecture Durrës

Regional Indicator		Measuring Units	2008	2009	2010	2011	2012
Gross Value Added		Mn. Lek	89,229	94,938	109,731	112,989	114,579
A+B	Agriculture, hunting and forestry, Fishing	%	14.4	14.3	14.6	14.2	16.6
C+D+E	Industry	%	12.0	13.0	15.7	16.1	15.5
F	Construction	%	14.4	13.6	11.2	10.5	7.9
G+H+I	Wholesale and retail trade, repair of motor vehicles and household, hotels and rest, transport and comm.	%	33.8	33.4	30.7	33.5	34.0
J+K	Financial, real-estate, renting and business activities	%	15.6	15.2	13.8	12.8	13.4
L to P	Other service activities	%	9.8	10.6	14.0	12.9	12.7
Gross Domestic Product, in current prices		Mn. Lek	103,018	109,722	126,245	129,921	132,212
		Mn. Euro	839	831	916	926	951
		PPS	1,923	1,972	2,103	2,150	2,157
Gross Domestic Product, AL = 100		%	9.53	9.59	10.18	9.99	9.91
GDP, in basic price		Mn. Lek		106,044	122,117	127,874	131,452
Growth Rate of Regional GDP		%		2.9	11.3	1.3	1.2
GDP per capita		Lek	393,760	415,217	471,571	477,615	481,007
		Euro	3,206	3,144	3,423	3,404	3,460
		PPS					
GDP per capita, AL = 100		%	107.39	106.26	110.81	106.67	104.47
GDP per capita in PPS, EU28 = 100		%					

*Evaluation for the year 2012 are based on semi-final estimation of GDP

Table B.20. Prefecture Kukës

Regional Indicator		Measuring Units	2008	2009	2010	2011	2012
Gross Value Added		Mn. Lek	20,237	21,737	23,989	25,376	24,177
A+B	Agriculture, hunting and forestry, Fishing	%	29.4	28.9	31.5	40.2	36.9
C+D+E	Industry	%	13.1	14.5	13.9	6.6	7.9
F	Construction	%	20.9	19.5	17.5	16.2	15.4
G+H+I	Wholesale and retail trade, repair of motor vehicles and household, hotels and rest, transport and comm.	%	13.7	13.2	13.0	11.4	11.1
J+K	Financial, real-estate, renting and business activities	%	6.0	5.6	5.9	7.5	8.6
L to P	Other service activities	%	16.9	18.4	18.2	18.1	20.2
Gross Domestic Product, in current prices		Mn. Lek	23,394	25,122	27,600	29,179	27,898
		Mn. Euro	190	190	200	208	201
		PPS	437	452	460	483	455
Gross Domestic Product, AL = 100		%	2.16	2.20	2.23	2.24	2.08
GDP, in basic price		Mn. Lek		24.389	26.077	28.854	27.933
Growth Rate of Regional GDP		%		4.3	3.8	4.5	-4.3
GDP per capita		Lek	246,346	271,812	305,599	329,255	319,935
		Euro	2,006	2,058	2,219	2,346	2,302
		PPS					
GDP per capita, AL = 100		%	67.19	69.56	71.81	73.53	69.49
GDP per capita in PPS, EU28 = 100		%					

**Evaluation for the year 2012 are based on semi-final estimation of GDP*

Table B.21. Prefecture Lezhë

Regional Indicator		Measuring Units	2008	2009	2010	2011	2012
Gross Value Added		Mn. Lek	31,756	33,631	34,665	35,912	39,301
A+B	Agriculture, hunting and forestry, Fishing	%	28.3	28.2	32.5	29.9	33.7
C+D+E	Industry	%	8.0	8.5	11.4	12.1	11.7
F	Construction	%	17.8	16.9	13.5	13.8	10.7
G+H+I	Wholesale and retail trade, repair of motor vehicles and household, hotels and rest, transport and comm.	%	20.2	19.9	14.8	15.6	16.9
J+K	Financial, real-estate, renting and business activities	%	11.3	10.8	9.9	11.8	11.0
L to P	Other service activities	%	14.3	15.7	17.9	16.9	16.0
Gross Domestic Product, in current prices		Mn. Lek	36,640	38,868	39,882	41,294	45,349
		Mn. Euro	298	294	290	294	326
		PPS	684	699	664	683	740
Gross Domestic Product, AL = 100		%	3.39	3.40	3.22	3.17	3.41
GDP, in basic price		Mn. Lek		37,736	38,169	40,536	45,262
Growth Rate of Regional GDP		%		3.0	-1.8	1.6	9.6
GDP per capita		Lek	254,351	274,083	284,376	296,302	327,027
		Euro	2,071	2,075	2,064	2,111	2,353
		PPS					
GDP per capita, AL = 100		%	69.37	70.14	66.82	66.18	71.03
GDP per capita in PPS, EU28 = 100		%					

**Evaluation for the year 2012 are based on semi-final estimation of GDP*

Table B.22. Prefecture Shkodër

Regional Indicator		Measuring Units	2008	2009	2010	2011	2012
Gross Value Added		Mn. Lek	52,747	56,837	64,396	64,084	62,228
A+B	Agriculture, hunting and forestry, Fishing	%	30.7	30.1	30.8	29.9	33.9
C+D+E	Industry	%	15.0	16.1	15.6	12.3	12.2
F	Construction	%	12.4	11.6	14.9	15.3	9.8
G+H+I	Wholesale and retail trade, repair of motor vehicles and household, hotels and rest, transport and comm.	%	15.2	14.7	11.7	13.2	12.7
J+K	Financial, real-estate, renting and business activities	%	10.3	9.8	10.3	12.4	12.4
L to P	Other service activities	%	16.4	17.8	16.8	17.0	19.0
Gross Domestic Product, in current prices		Mn. Lek	61,002	65,688	74,088	73,687	71,805
		Mn. Euro	497	497	538	525	517
		PPS	1,139	1,181	1,234	1,219	1,172
Gross Domestic Product, AL = 100		%	5.64	5.74	5.98	5.67	5.35
GDP, in basic price		Mn. Lek		63,618	70,167	72,827	71,731
Growth Rate of Regional GDP		%		4.3	6.8	-1.7	-2.7
GDP per capita		Lek	260,872	284,891	325,888	328,928	323,480
		Euro	2,124	2,157	2,366	2,344	2,327
		PPS					
GDP per capita, AL = 100		%	71.15	72.91	76.58	73.46	70.26
GDP per capita in PPS, EU28 = 100		%					

**Evaluation for the year 2012 are based on semi-final estimation of GDP*

Table B.23 Prefecture Elbasan

Regional Indicator		Measuring Units	2008	2009	2010	2011	2012
Gross Value Added		Mn. Lek	68,694	73,294	86,749	92,060	91,209
A+B	Agriculture, hunting and forestry, Fishing	%	28.4	28.1	30.2	32.4	34.1
C+D+E	Industry	%	14.4	14.8	16.7	17.3	14.2
F	Construction	%	11.2	10.5	8.0	7.9	8.2
G+H+I	Wholesale and retail trade, repair of motor vehicles and household, hotels and rest, transport and comm.	%	21.4	21.0	22.9	20.2	19.8
J+K	Financial, real-estate, renting and business activities	%	8.5	8.2	7.1	7.5	7.5
L to P	Other service activities	%	16.0	17.4	15.2	14.7	16.1
Gross Domestic Product, in current prices		Mn. Lek	79,339	84,708	99,805	105,856	105,245
		Mn. Euro	646	641	725	754	757
		PPS	1,481	1,522	1,663	1,752	1,717
Gross Domestic Product, AL = 100		%	7.34	7.40	8.05	8.14	7.85
GDP, in basic price		Mn. Lek		81,266	95,655	105,381	105,012
Growth Rate of Regional GDP		%		2.4	12.9	5.6	-0.8
GDP per capita		Lek	249,550	271,319	323,729	345,890	346,054
		Euro	2,032	2,054	2,350	2,465	2,490
		PPS					
GDP per capita, AL = 100		%	68.06	69.43	76.07	77.25	75.16
GDP per capita in PPS, EU28 = 100		%					

*Evaluation for the year 2012 are based on semi-final estimation of GDP

Table B.24. Prefecture Tiranë

Regional Indicator		Measuring Units	2008	2009	2010	2011	2012
Gross Value Added		Mn. Lek	379,204	401,338	417,592	432,767	442,063
A+B	Agriculture, hunting and forestry, Fishing	%	4.1	4.1	4.6	4.7	4.7
C+D+E	Industry	%	8.0	8.7	11.9	10.9	10.3
F	Construction	%	24.8	23.5	20.5	20.3	17.8
G+H+I	Wholesale and retail trade, repair of motor vehicles and household, hotels and rest, transport and comm.	%	28.7	28.2	28.4	28.4	29.7
J+K	Financial, real-estate, renting and business activities	%	19.7	19.5	19.4	18.7	20.0
L to P	Other service activities	%	14.7	16.1	15.2	17.0	17.4
Gross Domestic Product, in current prices		Mn. Lek	437,495	463,838	480,440	497,619	510,093
		Mn. Euro	3,562	3,512	3,488	3,546	3,670
		PPS	8,166	8,337	8,004	8,234	8,323
Gross Domestic Product, AL = 100		%	40.48	40.55	38.76	38.26	38.18
GDP, in basic price		Mn. Lek		454,632	466,242	487,842	508,268
Growth Rate of Regional GDP		%		3.9	0.5	1.5	2.1
GDP per capita		Lek	604,972	627,582	636,036	644,342	649,737
		Euro	4,925	4,752	4,617	4,592	4,674
		PPS					
GDP per capita, AL = 100		%	164.99	160.61	149.46	143.91	141.11
GDP per capita in PPS, EU28 = 100		%					

**Evaluation for the year 2012 are based on semi-final estimation of GDP*

Table B.25. Prefecture Berat

Regional Indicator		Measuring Units	2008	2009	2010	2011	2012
Gross Value Added		Mn. Lek	37,015	39,098	44,128	47,477	46,964
A+B	Agriculture, hunting and forestry, Fishing	%	40.4	40.4	40.6	42.5	42.7
C+D+E	Industry	%	9.5	9.6	11.3	12.1	11.0
F	Construction	%	14.6	13.9	11.7	11.2	10.5
G+H+I	Wholesale and retail trade, repair of motor vehicles and household, hotels and rest, transport and comm.	%	16.6	16.3	13.9	13.9	14.2
J+K	Financial, real-estate, renting and business activities	%	5.9	5.6	5.2	6.1	6.6
L to P	Other service activities	%	13.0	14.3	17.4	14.3	15.1
Gross Domestic Product, in current prices		Mn. Lek	42,694	45,187	50,769	54,592	54,192
		Mn. Euro	348	342	369	389	390
		PPS	797	812	846	903	884
Gross Domestic Product, AL = 100		%	3.95	3.95	4.10	4.20	4.06
GDP, in basic price		Mn. Lek		43,998	48,273	53,276	53,452
Growth Rate of Regional GDP		%		3.1	6.8	4.9	-2.1
GDP per capita		Lek	266,736	290,892	335,387	368,464	371,324
		Euro	2,172	2,202	2,435	2,626	2,671
		PPS					
GDP per capita, AL = 100		%	72.75	74.44	78.81	82.29	80.65
GDP per capita in PPS, EU28 = 100		%					

*Evaluation for the year 2012 are based on semi-final estimation of GDP

Table B.26. Prefecture Fier

Regional Indicator		Measuring Units	2008	2009	2010	2011	2012
Gross Value Added		Mn. Lek	96,066	96,827	113,752	125,797	144,053
A+B	Agriculture, hunting and forestry, Fishing	%	37.9	39.7	40.5	35.2	34.9
C+D+E	Industry	%	21.0	17.4	22.2	28.6	33.2
F	Construction	%	9.0	9.0	7.0	6.8	5.6
Wholesale and retail trade, repair of motor vehicles and household, hotels and rest, transport and comm.		%	15.6	16.1	12.6	12.2	10.3
G+H+I		%					
J+K	Financial, real-estate, renting and business activities	%	7.8	7.9	7.3	7.9	7.4
L to P	Other service activities	%	8.6	9.9	10.3	9.4	8.5
Gross Domestic Product, in current prices		Mn. Lek	110,129	111,906	130,871	144,648	166,222
		Mn. Euro	897	847	950	1,031	1,196
		PPS	2,056	2,011	2,180	2,394	2,712
Gross Domestic Product, AL = 100		%	10.19	9.78	10.56	11.12	12.45
GDP, in basic price		Mn. Lek		111,861	119,365	135,219	157,058
Growth Rate of Regional GDP		%		1.6	6.7	3.3	8.6
GDP per capita		Lek	324,389	335,683	399,460	448,466	520,813
		Euro	2,641	2,542	2,900	3,196	3,747
		PPS					
GDP per capita, AL = 100		%	88.47	85.91	93.87	100.16	113.11
GDP per capita in PPS, EU28 = 100		%					

**Evaluation for the year 2012 are based on semi-final estimation of GDP*

Table B.27. Prefecture Gjirokaštër

Regional Indicator		Measuring Units	2008	2009	2010	2011	2012
Gross Value Added		Mn. Lek	20,942	22,102	24,242	28,240	25,213
A+B	Agriculture, hunting and forestry, Fishing	%	34.3	34.3	33.7	34.1	37.2
C+D+E	Industry	%	7.8	8.4	9.0	6.5	4.7
F	Construction	%	15.4	14.6	12.9	13.4	6.7
G+H+I	Wholesale and retail trade, repair of motor vehicles and household, hotels and rest, transport and comm.	%	20.3	19.8	14.8	14.2	14.6
J+K	Financial, real-estate, renting and business activities	%	10.0	9.3	8.2	12.6	13.9
L to P	Other service activities	%	12.4	13.7	21.4	19.2	23.0
Gross Domestic Product, in current prices		Mn. Lek	24,152	25,544	27,890	32,472	29,093
		Mn. Euro	197	193	202	231	209
		PPS	451	459	465	537	475
Gross Domestic Product, AL = 100		%	2.23	2.23	2.25	2.50	2.17
GDP, in basic price		Mn. Lek		24,951	26,723	31,874	28,812
Growth Rate of Regional GDP		%		3.3	4.6	14.3	-11.3
GDP per capita		Lek	275,667	303,871	347,230	424,125	392,225
		Euro	2,244	2,301	2,521	3,022	2,822
		PPS					
GDP per capita, AL = 100		%	75.18	77.77	81.59	94.72	85.19
GDP per capita in PPS, EU28 = 100		%					

**Evaluation for the year 2012 are based on semi-final estimation of GDP*

Table B.28. Prefecture Korçë

Regional Indicator		Measuring Units	2008	2009	2010	2011	2012
Gross Value Added		Mn. Lek	52,629	56,225	59,968	62,437	63,231
A+B	Agriculture, hunting and forestry, Fishing	%	36.2	35.8	36.0	38.7	38.7
C+D+E	Industry	%	11.1	11.6	12.7	12.2	10.8
F	Construction	%	9.6	9.0	7.8	7.7	10.1
G+H+I	Wholesale and retail trade, repair of motor vehicles and household, hotels and rest, transport and comm.	%	16.6	16.0	13.9	13.1	12.1
J+K	Financial, real-estate, renting and business activities	%	10.0	9.5	9.0	9.6	9.3
L to P	Other service activities	%	16.5	18.0	20.5	18.8	19.0
Gross Domestic Product, in current prices		Mn. Lek	60,795	64,981	68,993	71,794	72,962
		Mn. Euro	495	492	501	512	525
		PPS	1,135	1,168	1,149	1,188	1,190
Gross Domestic Product, AL = 100		%	5.63	5.68	5.57	5.52	5.46
GDP, in basic price		Mn. Lek		62,892	65,986	70,280	72,638
Growth Rate of Regional GDP		%		3.4	1.5	1.9	1.2
GDP per capita		Lek	254,490	276,087	297,333	313,791	321,697
		Euro	2,072	2,090	2,159	2,236	2,314
		PPS					
GDP per capita, AL = 100		%	69.41	70.66	69.87	70.08	69.87
GDP per capita in PPS, EU28 = 100		%					

**Evaluation for the year 2012 are based on semi-final estimation of GDP*

Table B.29. Prefecture Vlorë

Regional Indicator		Measuring Units	2008	2009	2010	2011	2012
Gross Value Added		Mn. Lek	60,956	64,189	64,562	70,784	66,889
A+B	Agriculture, hunting and forestry, Fishing	%	24.4	24.4	24.7	27.7	27.5
C+D+E	Industry	%	8.9	9.1	12.6	11.3	11.9
F	Construction	%	22.3	21.2	16.6	18.4	12.7
G+H+I	Wholesale and retail trade, repair of motor vehicles and household, hotels and rest, transport and comm.	%	19.3	19.1	15.1	15.9	18.5
J+K	Financial, real-estate, renting and business activities	%	13.0	12.7	13.0	12.7	13.4
L to P	Other service activities	%	12.2	13.5	17.9	14.1	16.0
Gross Domestic Product, in current prices		Mn. Lek	70,279	74,185	74,278	81,391	77,182
		Mn. Euro	572	562	539	580	555
		PPS	1,312	1,333	1,237	1,347	1,259
Gross Domestic Product, AL = 100		%	6.50	6.49	5.99	6.26	5.83
GDP, in basic price		Mn. Lek		72,527	70,845	79,352	76,912
Growth Rate of Regional GDP		%		3.2	-4.5	6.8	-5.5
GDP per capita		Lek	369,347	393,356	398,808	442,650	422,054
		Euro	3,007	2,978	2,895	3,154	3,036
		PPS					
GDP per capita, AL = 100		%	100.73	100.67	93.72	98.86	91.66
GDP per capita in PPS, EU28 = 100		%					

**Evaluation for the year 2012 are based on semi-final estimation of GDP*