

Population of Albania

1 January 2016

Tirana, 19th of February 2016: The population of Albania on January 1st is 2,886,026 inhabitants, compared to the population of 2015 there is a decrease of 6,276 inhabitants.

The population of Albania consists of 1,461,326 males and 1,424,700 females. The sex ratio of this population is 102.6 males for 100 females. The median age of the population of Albania on January the 1st 2015 is 34.7 years.

Demographic events and their impact on the annual change of the population.

Births: During 2015 the number of births in Albania has been 33,221; from these 17,365 were males and 15,856 females. The sex ratio at birth for 2015 was 109.5 males for 100 females. *Deaths:* During 2015 there were 22,422 deaths, from these 11,839 males and 10,583 females. The natural increase for the last year has been 10,799 persons. *Emigration:* It has been estimated that in 2015, 42,922 inhabitants left the country and 52.6 % these were males. *Immigration:* In the same year the number of immigrants in Albania was estimated to be 25,846 persons. Net migration during the last year has been – 17,076. As a consequence during 2015 the population of Albania has decreased by 6,277 inhabitants (10,799 natural increase -17,076 net migration).

Annual change of demographic events: During 2015 the number of live births has decreased with 2,539 and the number of deaths is increased with 1,700 compared with 2014. During 2015 net migration in Albania compared to 2014 decreased by 1000 persons.

Population of January the 1st 2016, by prefecture. Tirana remains the population with the highest population in Albania with 811,649 (28.1%) inhabitants, followed by Fier with 312,488 (10.8%) and Elbasani with 298,913 (10.4%). The prefectures with the lowest population in Albania are Gjirokastrë, Kukës and Dibër, respectively with 70,331, 84,035 and 134,153 inhabitants. Of all the prefectures of Albania only Tirana, Durrës and Vlorë have shown a population increase, every other prefecture's population has decreased. The prefecture with the highest annual population increase is Tirana with 1.36%, whereas Gjirokastrë is the prefecture with the highest annual population decrease with 2.57%. The prefecture with the highest sex ratio is Dibër with 108 males for 100 females, whereas this ratio is the lowest in Tirana with 99.5 males for 100 females.

Fig. 1 Population Pyramid, January the 1st 2016

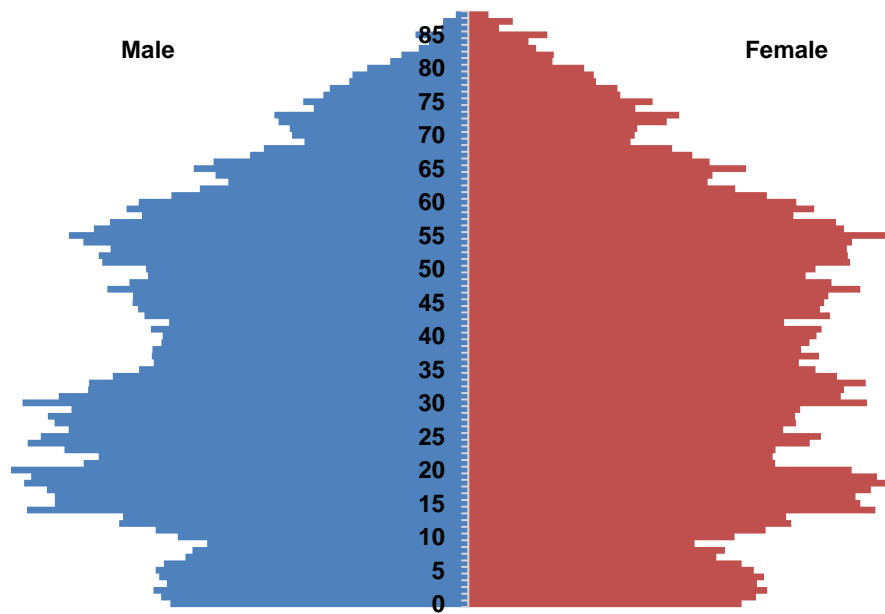


Fig. 2 Births, deaths and the natural increase of the population, 2001 - 2015

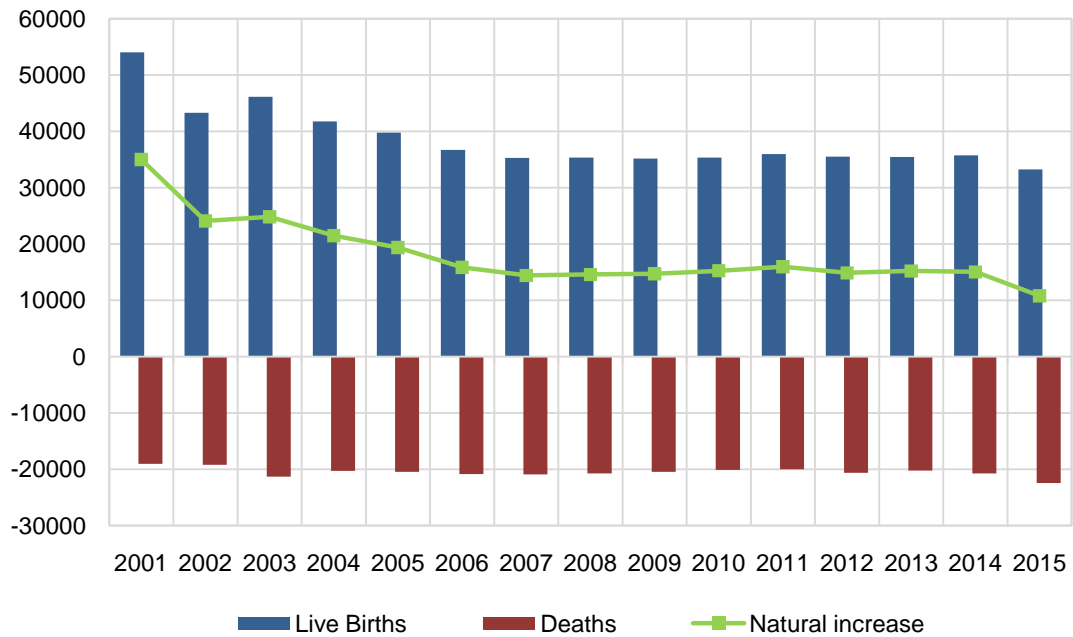


Fig. 3 Population of Albania 2001 - 2016

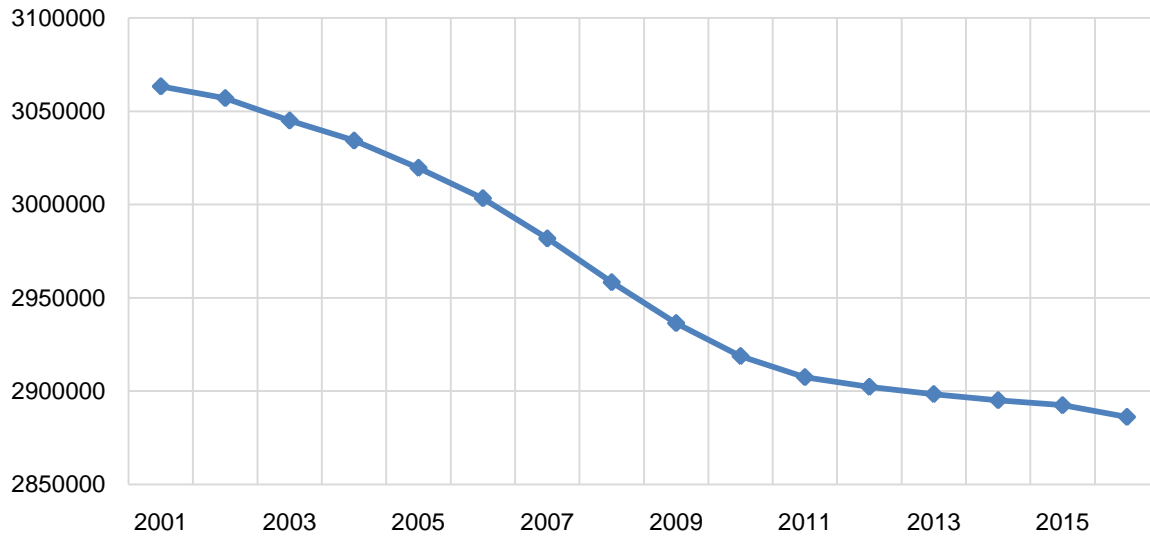
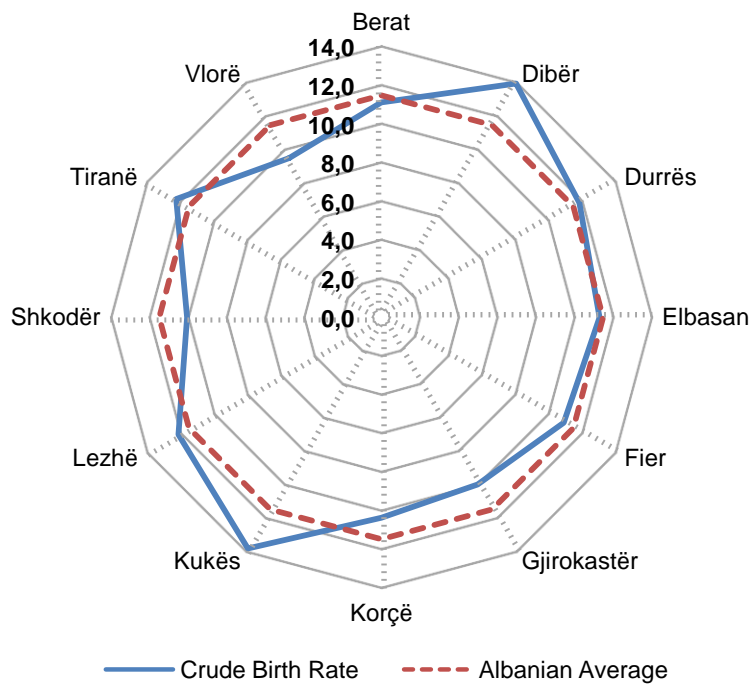


Fig. 4 Gross birth rate by prefecture, 2015



Tab. 1 Population by prefecture and sex

Prefectures	1 January 2015			1 January 2016		
	MF	M	F	MF	M	F
Total	2,892,302	1,461,485	1,430,817	2,886,026	1,461,326	1,424,700
Berat	142,644	72,477	70,167	139,815	71,289	68,526
Dibër	136,443	70,394	66,049	134,153	69,644	64,509
Durrës	276,124	140,158	135,966	278,775	141,887	136,888
Elbasan	301,324	153,334	147,990	298,913	152,875	146,038
Fier	314,935	160,606	154,329	312,448	159,901	152,547
Gjirokastrë	72,183	36,743	35,440	70,331	35,731	34,600
Korçë	224,111	114,238	109,873	221,706	113,040	108,666
Kukës	85,440	43,506	41,934	84,035	42,935	41,100
Lezhë	136,781	69,256	67,525	135,613	69,089	66,524
Shkodër	218,470	109,165	109,305	215,483	107,659	107,824
Tiranë	800,791	399,022	401,769	811,649	404,738	406,911
Vlorë	183,056	92,586	90,470	183,105	92,538	90,567

Tab 2. Population on the 1st of January age-group and sex

	1 January 2015			1 January 2016		
	MF	M	F	MF	M	F
Total	2,892,302	14,614,85	1,430,817	2,886,026	1,461,326	1,424,700
0-4	171,394	88,533	82,861	167,582	86,277	81,305
5 - 9	158,659	83,774	74,885	153,534	80,963	72,571
10 - 14	203,616	105,488	98,128	188,697	98,001	90,696
15-19	246,534	126,251	120,283	233,519	119,988	113,531
20-24	217,769	119,457	98,312	208,378	115,857	92,521
25-29	210,801	115,898	94,903	209,071	115,964	93,107
30-34	204,861	102,508	102,353	218,674	110,989	107,685
35-39	179,402	85,864	93,538	185,052	89,199	95,853
40-44	186,375	88,765	97,610	186,229	88,821	97,408
45-49	195,908	94,798	101,110	197,102	95,301	101,801
50-54	212,616	104,710	107,906	206,790	101,468	105,322
55-59	196,373	97,911	98,462	204,587	101,448	103,139
60-64	148,728	74,755	73,973	155,736	78,216	77,520
65-69	115,834	58,539	57,295	125,342	62,911	62,431
70-74	105,411	51,424	53,987	101,634	50,334	51,300
75-79	76,449	37,246	39,203	80,095	38,548	41,547
80-84	41,434	18,202	23,232	42,176	18,929	23,247
85+	20,138	7,362	12,776	21,828	8,112	13,716

Methodology

Population dynamics are defined by four components: births, deaths, immigration and emigration. The effect of each of these components is shown in the population balance equation below:

$$P_{1 \text{ January } 2016} = P_{1 \text{ January } 2015} + B - D + I - E,$$

Where: P_{2015} and P_{2016} are respectively the number of population on 1 January 2015 and 2016 and

B, D, I and E are births, deaths, immigrants and emigrants of the one year period between 1 January 2015 – 31 December 2015.

The number of the population of Albania of 1 January 2016 is based on the combined calculations between the population of 1 January 2015 and demographic events (births and deaths) that are provided by the General Directorate of the Civil Register.

The population of January the 1st disaggregated by age and sex was taken as a starting point. Births and deaths by age and sex were added to this population. Hence we arrived to a population that takes into consideration only the natural increase. Emigration and immigration numbers were derived from the publication "Population Projections, 2011 - 2031". The information about internal movement was used only to calculate the population by prefecture.

Definitions

Population Pyramid: It is a special type of graph that shows the age and sex structure of the population.

Population projections: Are the calculations of the future changes of the number of the population, after assumptions on the future trends of fertility, mortality and migration rates are taken into consideration.

Gross birth rate: It is the number of births for 1,000 inhabitants of a given territory on a specific year.

Usual resident: Usual residents are all those persons regardless of nationality, who have lived or have the intention to live for at least 12 months in the territory of the Republic of Albania.