

Public Health Indicators

Years, 2022

Tirana, on 10 November 2023: In 2022, the total number of visits to the primary hospital service was 8,434,996, averaging 3 contacts per person in one year. The number of visits marks an increase of 3.6 %, compared to the number of visits in the previous year. During 2022, the average number of days a patient stays in hospital was 4.6 days. In public hospital service institutions 63,862 surgeries were performed, 12.8 % more, compared to the previous year.

I. Primary health care

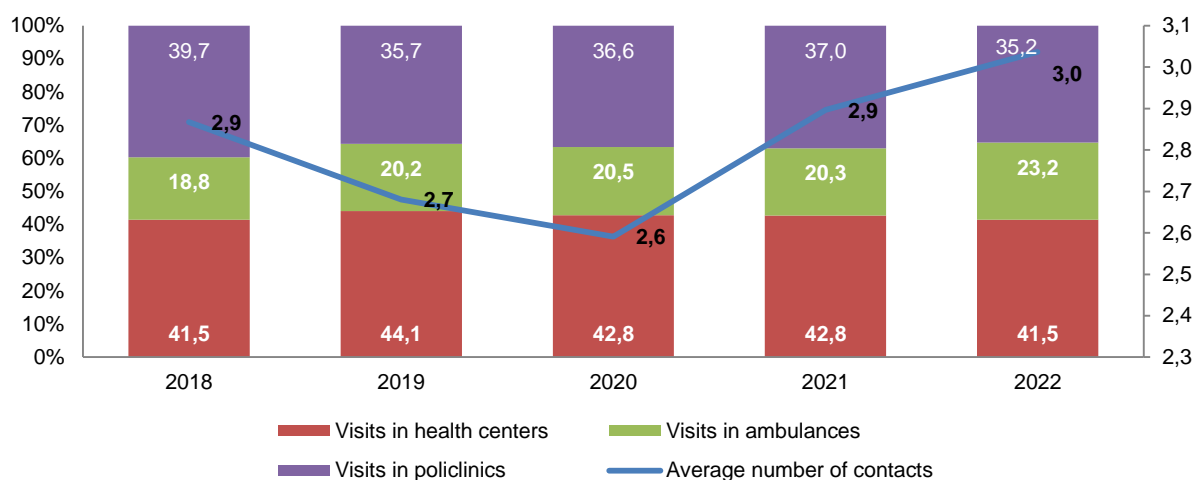
In 2022, from 8,434,996 of total visits to the primary service, 41.5 % were performed in health centres, 23.2 % in ambulances and 35.2 % in polyclinics. Over the last 5 years, there is almost the same distribution in the number of visits. Over 40 % of visits to health centres and ambulances are done by persons over 60 years of age.

Tab. 1 Activity of Health centres, Ambulances and Polyclinics

Item	Years				
	2018	2019	2020	2021	2022
Total visits	8,219,771	7,650,504	7,353,296	8,144,504	8,434,996
Number of visits in health centres	3,411,915	3,374,429	3,149,495	3,482,174	3,501,358
Number of visits in ambulances	1,541,645	1,543,269	1,510,006	1,650,378	1,961,026
Number of visits in polyclinics	3,266,211	2,732,806	2,693,795	3,011,952	2,972,612

Source: Ministry of Health and Social Protection

Fig. 1 Distribution of visits and average number of contacts to the primary health care centres



Source: Ministry of Health and Social Protection

Women's Consultant

In 2022, the number of visits to the women's consultant was 220,074, marking a decrease of 2.1 %, compared to 2021. From the total of visits, 20.2 % were gynaecological visits and 79.8 % were obstetrical visits. 56.0 % of obstetrical visits were performed with the assistance of a specialist doctor.

The number of pre-obstetrical visits was 23,444, with a decrease of 9.5 % more, compared to 2021.

Tab. 2 Activity of women's consultation

Items	Years				
	2018	2019	2020	2021	2022
Number of total visits	243,594	206,326	212,400	224,790	220,074
Number of gynaecological visits	46,372	38,981	30,231	41,647	44,514
Number of obstetrical visits	197,222	167,345	182,169	183,143	175,560
- with physician	124,994	101,938	111,288	111,516	97,897
Number of pre obstetrical visits	29,517	28,178	23,636	25,900	23,444

Source: Ministry of Health and Social Protection

Child Consultant

In 2022, 266,362 children were registered at the child consultant and 749,118 visits were made, an average of 2.8 visits per child in one year. Compared to 2021, the number of visits has increased by 0.5

For more information, visit INSTAT webpage: <http://www.instat.gov.al/>

% . From the total of visits, 56.5 % of them were performed with the assistance of a specialist doctor and the rest were attended by midwives and nurses.

The number of children 0-1 years old who are exclusively breastfed during 2022 was 17,849, while the number of children fed with artificial food was 4,719.

Tab. 3 Activity of child consultations

Item	Years				
	2018	2019	2020	2021	2022
Number of child consultations	2,131	2,081	2,028	2,055	2,124
Visit's number in consultation	802,633	782,532	708,211	745,746	749,118
of wich: by physician	455,987	423,412	410,153	414,282	422,998
Children's number registered in consultation	253,403	276,306	256,146	257,054	266,362
Number of breastfed children	18,988	18,317	18,541	19,660	17,849
Number of children fed with artificial food	5,342	4,585	4,239	4,597	4,719

Source: Ministry of Health and Social Protection

In 2022, vaccination of children within the first year of life under the national vaccination scheme continues to be high for all vaccine types. This year there is a decrease in vaccine coverage against Diphtheria, Tetanus and Pertussis by 0.8 point percentage, compared to 2021.

Tab. 4 Vaccine coverage, in %

Item	Years				
	2018	2019	2020	2021	2022
Infants, immuniz. against					
– Tuberculosis	99.1	98.9	97.9	98.8	98.7
– Diphtheria	99.8	98.6	98.5	95.8	95.0
– Tetanus	99.8	98.6	98.5	95.8	95.0
– Pertussis	99.8	98.6	98.5	95.8	95.0
– Measles-Mimaps-Rubela	94.1	95.0	91.0	89.2	89.2
– Poliomyelitis	98.7	98.6	98.3	98	98.0

Source: Institute of Public Health

II. Secondary Hospital service

In 2022, the number of public and non-public hospitals in the country was 61, of which 43 are public hospitals and 18 private hospitals. The coverage of public and non-public hospital service was 2.2 hospitals per 100 thousand inhabitants.

For more information, visit INSTAT webpage: <http://www.instat.gov.al/>

In public hospital service institutions, in 2022 the number of patients was 280,730 patients. The usage of hospital beds for health care during 2022 was 158.2 days, which constitute 43.3 % of the calendar days of this year.

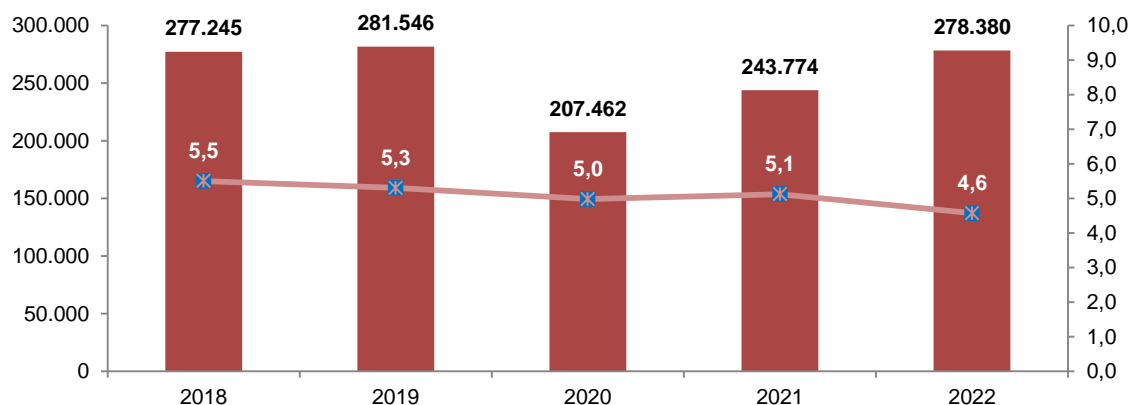
Tab. 5 Indicators of activity in public institutions of hospital service

Activity indicators in Public Hospitals	Years				
	2018	2019	2020	2021	2022
Number of hospital institutions	42	42	42	43	43
Number of beds in total ¹	8,496	8,586	8,745	8,926	8,703
Hospitalized persons	279,018	282,962	201,449	244,784	280,730
Days in bed realized	1,528,499	1,491,930	1,032,922	1,248,197	1,272,322
Bed occupancy in days	186.7	182.2	123.9	146.8	158.2
- in percentage	51.2	49.9	34.0	40.2	43.3
Average duration of hospitalization period	5.5	5.3	5.0	5.1	4.6
Bed turn ²	33.9	34.4	24.9	28.7	34.6
Number of persons operated on	64,929	63,669	46,369	56,622	63,862

Source: Ministry of Health and Social Protection

The average stay days of a patient in public hospitals are 4.6 days per year with a bed turn 34.6 times a year patients.

Fig. 2 Hospital discharges and average days of stay in public hospital services



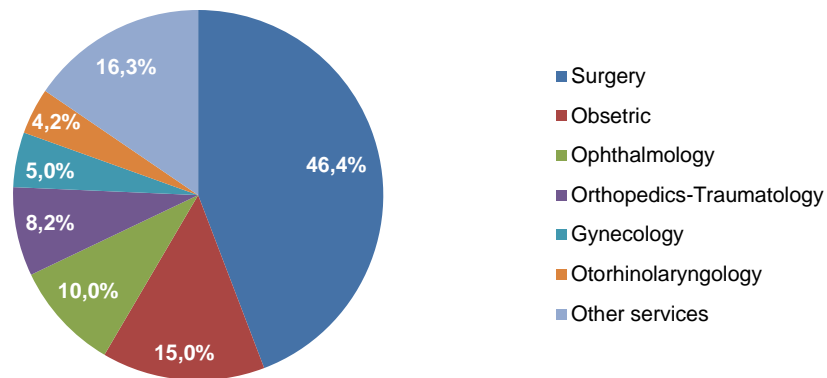
Source: Ministry of Health and Social Protection

¹ Data are revised; the total number of beds includes also emergency beds, acute curative beds that provide hospital service.

² Data are revised due to changes in the methodology for data calculation based on Eurostat methodology

In 2022, from the total number of hospitalized patients, 63,862 surgical interventions were performed, with an increase of 12.8% compared to the previous year. From the total number of operations performed, according to types of services approximately half of surgeries pertain to surgery.

Fig. 3 Surgical interventions disaggregated by the type of services, in %



Source: Ministry of Health and Social Protection

Methodology

The publication "Public Health Indicators" contains administrative data on the primary health care service and the secondary hospital service, with annual frequency. The data are provided by the Ministry of Health and Social Protection, while the data on the vaccine coverage are sourced from the Institute of Public Health.

Definitions

Primary health care centres are all healthcare institutions that provide healthcare for outpatient patients, which are equipped with at least one medical staff doctor or nurse (dental service is not included). Primary health care is provided to the population from its basic unit, which is known as the main health centre, at the city level and administrative unit centre, and from the ambulance or health point, at the rural level, aiming for the widest possible coverage and access to health services of the population, as the first point of contact with the national health care system.

The hospital is an institutional residence equipped to provide 24-hour medical care, hospitality and rehabilitation to patients who may need medical or surgical assistance.

Hospital beds are beds for accommodating patients, which include four types of beds according to function: curative beds, rehabilitation beds, chronic and palliative beds, as well as other unclassified beds. The total number of beds refers to the number in all hospitals, including general hospitals, mental health and substance abuse hospitals, specialty hospitals, regardless of whether the bed is occupied or not.

Inpatients are patients who have been formally admitted to an institution for treatment or care, and who stay at least one night.

Usage of hospital bed per day is the number of average days of the year during which a hospital bed is occupied with patients.

Days in bed realized are multiplying the use of hospital beds per day with the number of beds in the hospital.

Turnover of a bed is the number of patients who are hospitalized per year.