

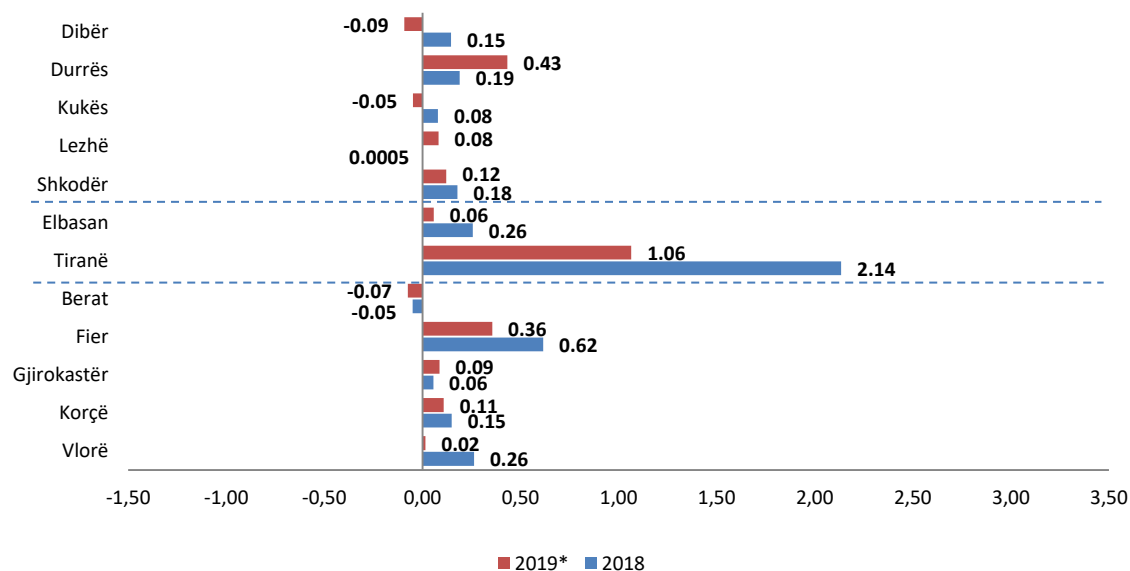
Gross Domestic Product by Statistical Regions in Albania, year 2019

Tiranë, 22 June 2021: In 2019 according to the Statistical Region Level 1 (Albania), GDP at current prices was ALL 1,691,729 Million the growth rate has increased by 2.11 % compared to the year 2018.

The highest contribution to the real growth rate for 2019 was in Prefecture Tiranë with +1.06 p.p. It was followed by Prefecture Durrës with a contribution to the real growth rate of +0.43 p.p and Prefecture Fier with a contribution to the real growth rate of +0.36 p.p.

The lowest contribution to the real growth was in Prefecture Dibër with -0.09 p.p. It was followed by Prefecture Berat with a contribution to the real growth rate of -0.07 p.p and Prefecture Kukës with a contribution to the real growth of -0.05 p.p.

Fig.1 Prefectures Contribution to real Growth Rate of GDP



*2019 Semi-final data

In 2019 according to the Statistical Region Level 2, GDP at current prices in North Region was ALL 389.6 Billion and it constituted 23.03 % of the total GDP. Compared with 2018, North Region, GDP in real terms has increased by 2.16 %.

GDP at current prices in the Center Region was ALL 835.1 Billion and it constitutes 49.36 % of the total GDP. Compared with 2018, Center Region, GDP in real terms has increased by 2.28 %.

GDP at current prices in South region was ALL 467.1 Billion and it constituted 27.61 % of the total GDP. Compared with 2018, South Region, GDP in real terms has increased by 1.78 %.

According to the Statistical Region Level 3, the highest real growth rate was registered in Prefecture Durrës where GDP in real terms has increased by 4.37 %. It was followed by Prefecture Gjirokastër where GDP in real terms has increased by 3.99 % and by Prefecture Fier where GDP in real terms has increased by 3.26 % in 2019 compared to 2018.

The lowest growth rate was registered in Prefecture Dibër where GDP in real terms has decreased by 2.89 %. It was followed by Prefecture Kukës where GDP in real terms has decreased by 2.80 % and by Prefecture Berat where GDP in real terms has decreased by 2.06 % in 2019 compared to 2018.

Tab. 1 GDP by statistical regions

Code	Statistical Level 2/3	GDP at current Prices (million ALL)	GDP at current Prices (million ALL)	Real Growth Rate of GDP	Contribution to real Growth	Structure of GDP	Structure of GDP
		2018	2019*	2019*/2018	2019*/2018	2018	2019*
AL	Republic of Albania	1,636,731	1,691,729	2.11	2.11	100.00	100.00
AL01	North	377,010	389,567	2.16	0.50	23.03	23.03
AL011	Dibër	52,106	50,964	-2.89	-0.09	3.18	3.01
AL012	Durrës	162,378	172,276	4.37	0.43	9.92	10.18
AL013	Kukës	27,936	27,322	-2.80	-0.05	1.71	1.62
AL014	Lezhë	50,972	52,948	2.63	0.08	3.11	3.13
AL015	Shkodër	83,618	86,057	2.39	0.12	5.11	5.09
AL02	Center	807,331	835,116	2.28	1.12	49.33	49.36
AL021	Elbasan	110,379	112,383	0.87	0.06	6.74	6.64
AL022	Tiranë	696,952	722,733	2.50	1.06	42.58	42.72
AL03	South	452,391	467,046	1.78	0.49	27.64	27.61
AL031	Berat	58,547	58,119	-2.06	-0.07	3.58	3.44
AL032	Fier	178,368	187,306	3.26	0.36	10.90	11.07
AL033	Gjirokastër	35,572	37,295	3.99	0.09	2.17	2.20
AL034	Korçë	87,837	91,138	2.02	0.11	5.37	5.39
AL035	Vlorë	92,067	93,188	0.27	0.02	5.63	5.51

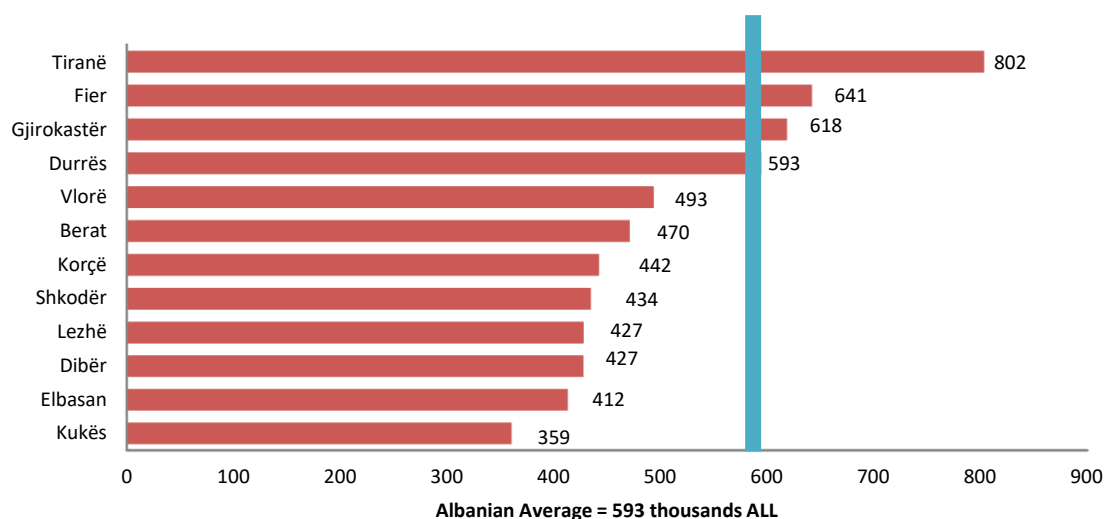
*2019 Semi-final data

For more information, visit INSTAT website <http://www.instat.gov.al/>

GDP per capita by statistical regions

In 2019 the level of GDP per capita according to Statistical Region Level 1 was around ALL 593 Thousand. Compared to year 2018 GDP per capita in nominal terms has increased by 3.80 %.

Fig.2 GDP per Capita by Statistical Region Level 3 in 2019 (000/ALL)



*2019 Semi-final data

In 2019 according to Statistical Regions Level 2, in the Statistical Region of North, GDP per capita is around ALL 481 thousand and has registered a growth with 4.29 % compared with 2018. GDP per capita for this region is 18.78 % below the national average.

In the Statistical Region Center GDP per capita is around ALL 712 thousand and has registered a growth with 2.84 % compared with 2018. GDP per capita for this region is 20.10 % above the national average.

In the Statistical Region South GDP per capita is around ALL 536 thousand and has registered a decrease with 4.60 % compared with 2018. GDP per capita for this region is 9.61 % below the national average.

The highest level of GDP per capita, by Statistical Region Level 3 for 2019, was in Prefecture Tiranë with around ALL 802 thousand and has registered a growth in nominal terms by 2.42 % compared with 2018. GDP per capita for Prefecture Tiranë was 35.38 % above the national average. It was followed by Prefecture Fier with around ALL 641 thousand and has registered an increase in nominal terms by 6.49 % compared with 2018. GDP per capita for Prefecture Fier was 8.11 % above the national average.

The lowest level of GDP per capita by Statistical Region Level 3 for 2019 was in Prefecture Kukës with around ALL 359 thousand and has registered a decrease in nominal terms by 0.94 %, compared with 2018. GDP per capita for Prefecture Kukës was 39.36 % below the national

For more information, visit INSTAT website <http://www.instat.gov.al/>

average. After that the lowest GDP per capita was registered in Prefecture Elbasan with around ALL 412 thousand and has registered an increase with 3.40 % compared with 2018. GDP per capita for Prefecture Elbasan was 30.43 % below the national average.

Tab. 2 GDP per capita by Statistical Region

Code	Statistical Level 2/3	GDP per capita (ALL)		GDP growth per capita at current prices (%)	Index of GDP (%)	Index of GDP (%)
		2018	2019*	2019*/2018	AI=100	AI=100
AL	Republic of Albania	571,011	592,717	3.80	100.0	100.0
AL01	North	461,583	481,402	4.29	80.8	81.2
AL011	Dibër	434,333	434,068	-0.06	76,1	73,2
AL012	Durrës	560,172	593,219	5.90	98,1	100,1
AL013	Kukës	362,850	359,447	-0.94	63,5	60,6
AL014	Lezhë	404,529	427,164	5.60	70,8	72,1
AL015	Shkodër	410,005	427,185	4.19	71,8	72,1
AL02	Center	692,197	711,835	2.84	121,2	120,1
AL021	Elbasan	398,818	412,375	3.40	69,8	69,6
AL022	Tiranë	783,474	802,447	2.42	137,2	135,4
AL03	South	512,178	535,744	4.60	89,7	90,4
AL031	Berat	463,561	470,301	1.45	81,2	79,3
AL032	Fier	601,683	640,762	6.49	105,4	108,1
AL033	Gjirokastër	571,991	617,526	7.96	100,2	104,2
AL034	Korçë	420,198	441,635	5.10	73,6	74,5
AL035	Vlorë	486,367	492,758	1.31	85,2	83,1

*2019 Semi-final data

Power Standard (PPS)

GDP for the Republic of Albania expressed in Purchase Power Standards (Purchase Power Parity as price indexes-PPS) in 2019 was 28.076 PPS.

GDP per capita expressed in PPS for Albania for year 2019 is 30.7 % compared with the European Union average per capita (EU28=100) (For more information consult information for users). By Statistical Region Level 2 in Center Region, GDP per capita in PPS for 2019 was 36.9 %, in North Region 24.9 % and in the South Region 27.8 %

Tab. 3 GDP per capita in PPS (EU28=100)

Code	Statistical Region	GDP per capita in PPS (EU28=100) for 2019
	Albania	30.7
	Statistical Region Level 2	
AL01	North	24.9
AL02	Center	36.9
AL03	South	27.8

Tab. 4 Structure of Gross Value Added by Statistical Regions and by type of activities (Branch=100%), year 2019*

Code	Statistical Level 2/3	Agriculture, Forestry and Fishing	Mining and Quarrying, Manufacturing, Electricity and Water Supply	Construction	Wholesale, Retail Trade, Transportation	Information and communication	Financial activities; Insurance activities	Real Estate Activities	Professional, Scientific and Technical Activities	Public Administration; Education; Health and Social Work Activities	Arts, entertainment and recreation	GVA in current prices
AL	Republic of Albania	100.0	100.0	100.0	100.0	100.0	100.0	100.0	100.0	100.0	100.0	100.0
AL01	North	28.3	29.5	19.8	21.7	11.5	24.6	23.9	13.6	21.5	14.5	23.0
AL011	Dibër	5.8	3.7	1.1	1.2	1.2	3.0	1.8	0.4	3.3	0.8	2.9
AL012	Durrës	7.3	16.8	10.3	13.9	5.5	7.9	12.7	9.4	6.8	6.4	11.0
AL013	Kukës	2.6	1.5	0.9	0.9	1.1	2.8	1.1	0.4	2.5	0.5	1.6
AL014	Lezhë	4.7	2.5	3.6	2.6	1.3	3.7	3.4	1.3	3.3	2.3	3.1
AL015	Shkodër	7.2	5.6	3.8	4.2	2.5	4.4	5.0	2.4	5.9	3.9	5.1
AL02	Center	20.3	44.1	59.2	56.4	75.9	48.1	52.7	77.5	54.9	69.8	49.3
AL021	Elbasan	12.5	7.7	3.8	4.7	2.8	5.6	5.9	1.9	6.9	3.1	6.8
AL022	Tiranë	7.8	36.9	54.0	51.5	73.6	42.7	46.8	74.7	50.2	71.4	42.5
AL03	South	51.3	26.4	21.0	21.9	12.6	27.3	23.4	8.9	23.6	15.7	27.6
AL031	Berat	7.4	2.9	2.6	2.1	1.6	4.9	2.2	0.7	3.1	1.5	3.4
AL032	Fier	23.9	11.6	7.2	6.6	4.0	7.7	7.7	3.6	6.3	3.0	10.7
AL033	Gjirokastër	3.0	1.7	1.6	2.5	1.4	3.0	2.0	0.8	2.9	1.1	2.2
AL034	Korçë	10.2	4.2	4.4	4.4	2.2	6.1	4.5	1.2	5.5	3.3	5.4
AL035	Vlorë	7.7	4.7	6.7	5.4	2.9	8.2	6.9	3.4	3.3	2.5	5.4

*2019 Semi-final data

For more information, visit INSTAT website <http://www.instat.gov.al/>

Tab. 5 Structure of Gross Value Added by Statistical Regions and by type of activities (Region=100), year 2019*

Code	Statistical Level 2/3	Agriculture, Forestry and Fishing	Mining and Quarrying, Manufacturing, Electricity and Water Supply	Construction	Wholesale, Retail Trade, Transportation	Information and communication	Financial activities; Insurance activities	Real Estate Activities	Professional, Scientific and Technical Activities	Public Administration; Education; Health and Social Work Activities	Arts, entertainment and recreation	GVA in current prices
AL	Republic of Albania	21.1	14.1	10.3	18.8	3.3	2.6	6.3	7.4	13.1	3.1	100.0
AL01	North	25.9	18.0	8.8	17.7	1.6	2.8	6.5	4.4	12.3	2.0	100.0
AL011	Dibër	40.4	24.1	3.7	7.8	1.3	2.7	3.8	0.9	14.7	0.7	100.0
AL012	Durrës	15.1	19.2	9.9	26.2	1.8	2.1	8.0	7.1	8.9	1.7	100.0
AL013	Kukës	34.2	15.1	5.5	10.5	2.2	4.6	4.3	1.9	20.8	0.9	100.0
AL014	Lezhë	31.4	11.0	11.2	15.8	1.4	3.2	6.9	3.1	13.9	1.9	100.0
AL015	Shkodër	29.9	15.5	7.3	15.9	1.7	2.3	6.3	3.6	15.4	2.1	100.0
AL02	Center	8.7	12.6	12.3	21.5	5.0	2.5	6.7	11.7	14.6	4.4	100.0
AL021	Elbasan	39.5	14.7	5.5	13.7	1.4	2.2	5.7	2.2	13.9	1.2	100.0
AL022	Tiranë	3.8	11.5	12.4	23.2	5.8	2.7	7.0	13.5	15.7	4.4	100.0
AL03	South	39.1	13.4	7.8	14.9	1.5	2.6	5.3	2.4	11.2	1.8	100.0
AL031	Berat	45.2	11.7	7.3	11.5	1.6	3.8	4.1	1.6	12.1	1.1	100.0
AL032	Fier	45.5	18.3	6.4	11.4	1.2	1.9	4.5	2.5	7.6	0.7	100.0
AL033	Gjirokastër	28.3	9.4	7.0	21.8	2.1	3.7	5.9	2.7	17.6	1.3	100.0
AL034	Korçë	39.8	9.7	8.0	15.8	1.4	3.0	5.4	1.7	13.7	1.6	100.0
AL035	Vlorë	29.3	12.3	11.9	18.8	1.8	3.9	8.1	4.7	8.0	1.2	100.0

*2019 Semi-final data

For more information, visit INSTAT website <http://www.instat.gov.al/>

Fig.3 GDP per Capita by Regions

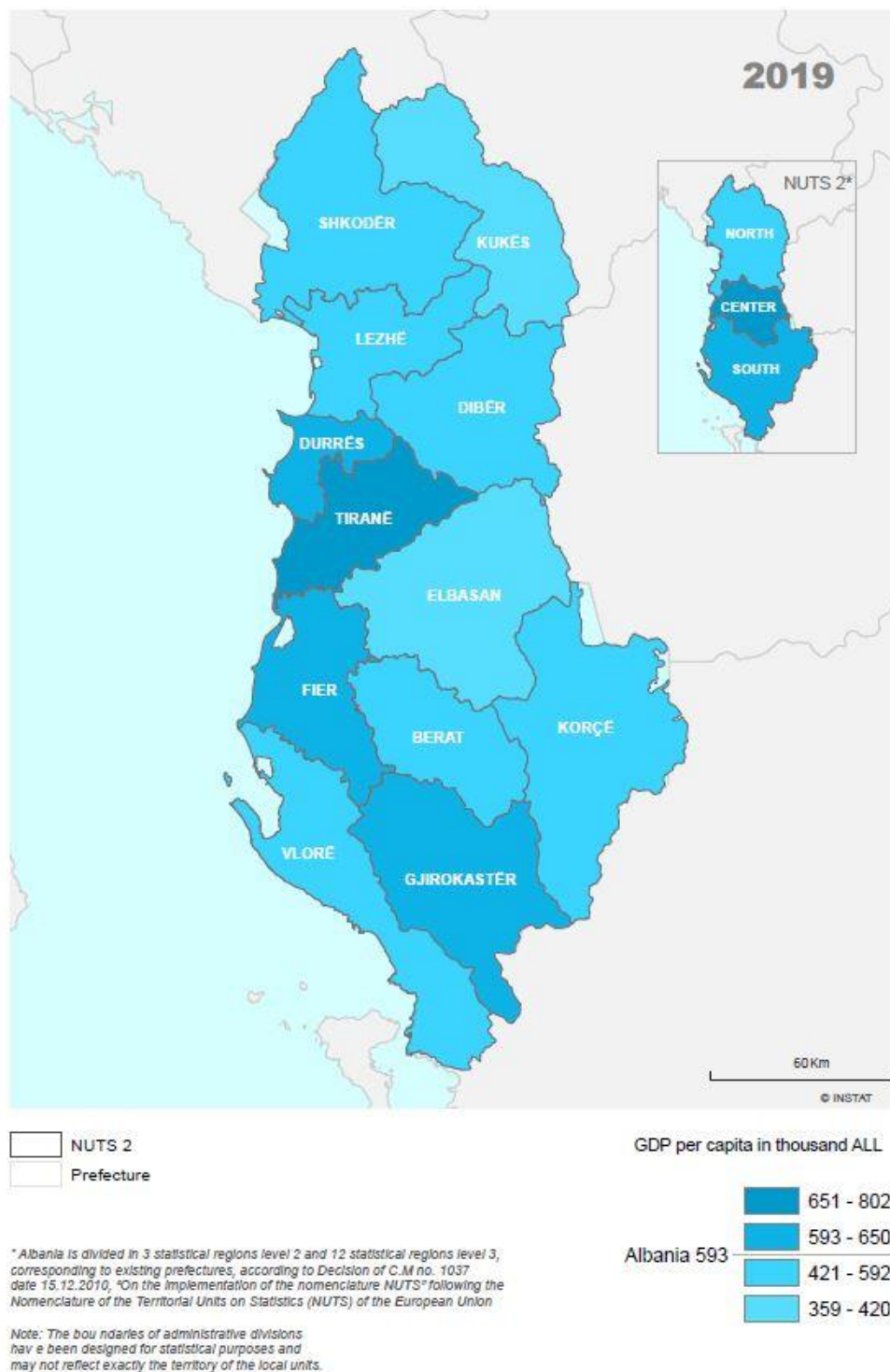
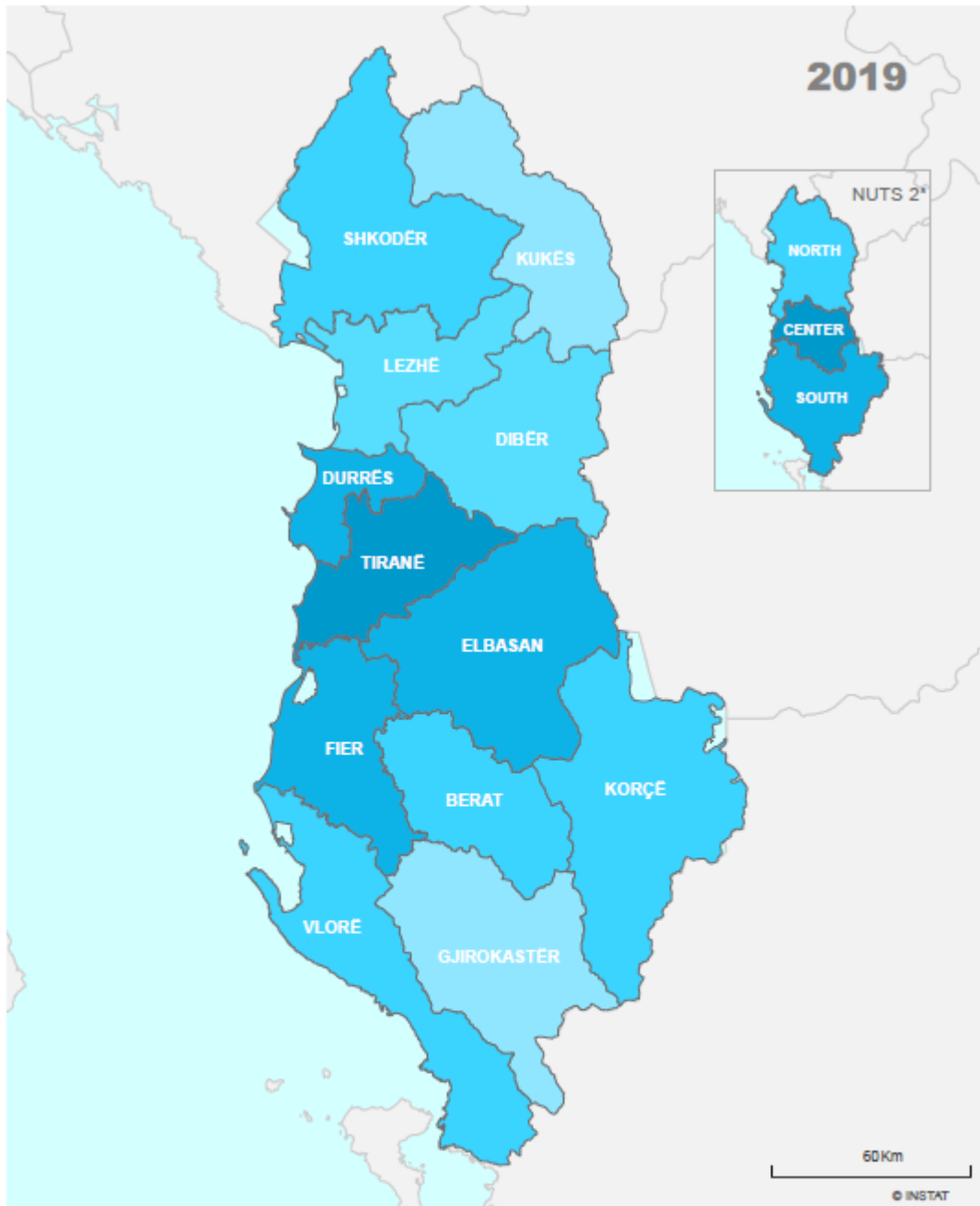


Fig. 4 GDP in current prices by regions



NUTS 2
 Prefecture

GDP in current prices in billion ALL

201 - 723
 101 - 200
 56 - 100
 41 - 55
 27 - 40

*Albania is divided in 3 statistical regions level 2 and 12 statistical regions level 3, corresponding to existing prefectures, according to Decision of C.M no. 1037 date 15.12.2010, "On the implementation of the nomenclature NUTS" following the Nomenclature of the Territorial Units on Statistics (NUTS) of the European Union

Note: The boundaries of administrative divisions have been designed for statistical purposes and may not reflect exactly the territory of the local units.

Methodology

This Publication presents the Regional Accounts Result of GDP for 2019 in Albania expressed in Statistical Region Level 1, 2 and 3, following the requirements of - Nomenclature of Territorial Measuring Units for Statistics (NUTS) of the European Union and by classification of economic activities NACE Rev 2.0.

National Regional Accounts are based on the ESA 2010 methodology, mainly in Chapter 13, based in the most recent evaluation of Annual National Accounts, published on 30 April 2020, in order to preserve the consistency of these indicators.

More detailed information about the Regional National Accounts (2014-2019) on the regional indicators can be found in the link below:

<http://instat.gov.al/en/themes/economy-and-finance/regional-accounts-in-albania/#tab2>

Classification and Methodology

Calculations of regional indicators are methodologically based on concepts and definitions of European System of Accounts (ESA 2010) and System of National Accounts (SNA 2008). Both these methodologies are the latest updates of ESA 1995 and SNA 1993. The European System of National Accounts and Regional Accounts is the framework for the measurement of economic and financial activities of the economic system, their components and the connection between them for a given period of time (usually one year). Transactions made by the economic agents related to other resident or non-resident units in an economic territory are object of measurements in Regional National Accounts. Classification changes are made to make regional economic indicators more useful to the users, to have a clearer view of the economic developments of specific regions and to improve the comparability between regions and EU member states information based on the Nomenclature of Territorial Measuring Units for Statistics (NUTS) of the European Union.

Residence Principle

The main principle for allocation GVA in Regional Accounts is that GVA should be allocated to the region where the producer unit is resident, it means that GVA have to be allocated to region where is created.

Changes in the methodology and estimation of annual National Accounts were reflected in the estimation of Regional Accounts. INSTAT has made qualitative changes to the estimation method of GVA s for the distribution by economic activities of institutional units that are uni-regional or multi-regional.

Regarding the methodology used for the Regional Accounts please consult the methodological material:

“Albanian Regional Account Methodology” in the address:

<http://www.instat.gov.al/media/4638/part-e-regional-accounts-albania.pdf>

The classifications used in the Regional Accounts are as follow:

- Nomenclature of Economic Activities Revision 2 (NACE Rev.2).
- Nomenclature of Territorial Measuring Units for Statistics (NUTS).

The Nomenclature of Territorial Measuring Units for Statistics (NUTS) is a uniform classification and is used as a base for collection and processing of European regional statistics.

Purchasing Power Standard (PPS) is an artificial currency unit that takes into consideration differences in national price levels. This unit allows meaningful volume comparisons of economic indicators for countries. Aggregates expressed in PPS are calculated by dividing aggregates (indicators) at current prices with national currency respectively Purchasing Power Parity (PPP). The volume index of GDP per capita expressed in Purchasing Power Standard (PPS) is given in relation to the average of the European Union (EU28 = 100).

Please note that the index expressed in PPS is intended for cross-country comparisons rather than for temporal comparisons. For further information on the PPS coefficients follow the address:

https://ec.europa.eu/eurostat/databrowser/view/prc_ppp_ind/default/table?lang=en.