

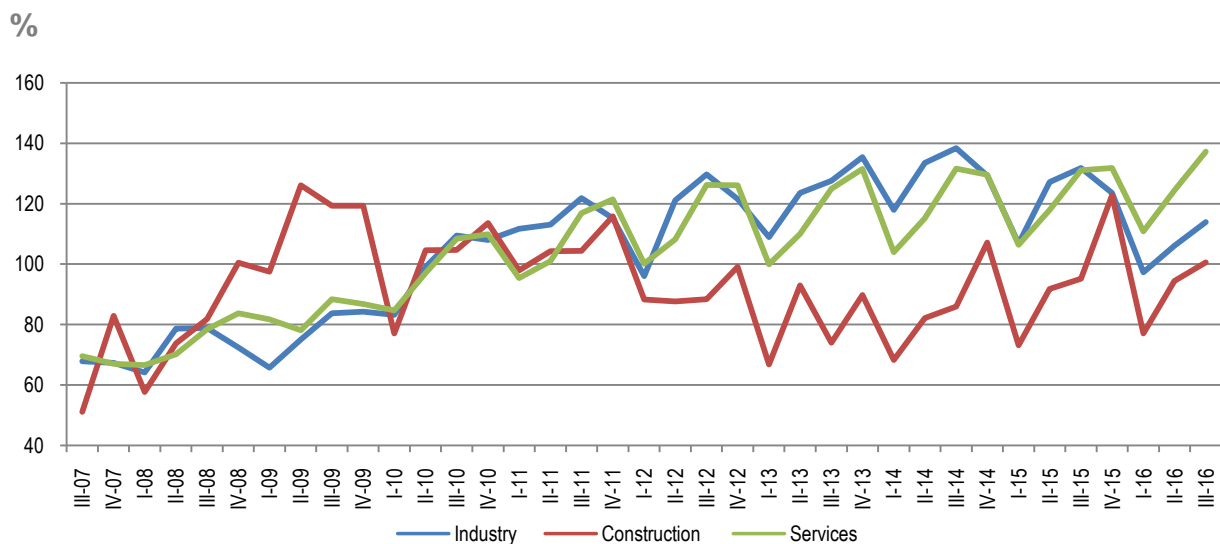
Short Term Statistics

Third Quarter 2016

Tirana, 23 December: INSTAT publish "Short term statistics of economical enterprise" data of second quarter 2016. The questionnaire covers: "Industry" (where are included "Mining and Quarrying" and "Manufacturing"), "Electricity, gas, steam", "Water supply; sewerage, waste management and remediation activities", "Construction" and "Services" (included the activity of Trade, Transport and storage, Hotels, Information and communication, Architectural and engineering activities, Travel agency).

In the third quarter 2016, the volume turnover index is 127.6 against the base year (2010=100).

Fig. 1 Indexes of turnover in Industry, Construction and Services, 2010 = 100



The annual change of this index presents an increase by 1.3 %. The annual change on the same quarter of 2015 was decreased by 0.2 %.

The quarterly change of turnover volume index, in the third quarter 2016 increased by 7.8 %.

For Release 23/12/2016

Tab. 1 Annual change of turnover volume index, Total activities

(%)

Code NACE Rev.2	Description	Weights	III - 15	IV - 15	I - 16	II - 16	III - 16
			III - 14	IV - 14	I - 15	II - 15	III - 15
Total by economic activities		100.0	-0.2	2.1	1.6	0.3	1.3
B+C	Industry	19.2	-4.7	-4.4	-9.0	-16.6	-13.5
B	<i>Mining and quarrying</i>	6.7	-32.5	-37.2	-36.6	-36.0	-34.3
C	<i>Manufacturing Industry</i>	12.5	8.6	10.4	5.5	-6.3	-2.4
D	Electricity, gas, steam	6.2	-7.3	-4.5	1.5	-2.4	1.6
E	Water supply; sewerage, waste management and remediation activities	0.9	-0.6	6.2	-18.0	3.3	6.7
F	Construction	10.6	10.7	14.5	5.3	2.9	5.7
G - N	Services	63.0	-0.4	1.8	4.1	5.4	4.6
G	<i>Trade</i>	55.3	1.6	3.2	3.0	4.5	4.4
H (49-53)	<i>Transport and storage</i>	1.7	-36.4	-40.0	-0.7	-0.8	3.3
I (551)	<i>Hotels</i>	0.4	23.9	11.3	24.7	24.8	21.4
J (58-62)	<i>Information and communication</i>	4.2	-13.9	3.0	17.1	20.3	5.3
M (71)	<i>Architectural and engineering activities</i>	1.0	30.6	9.3	13.2	12.0	2.0
N (79)	<i>Travel agency</i>	0.5	20.5	21.8	6.9	3.0	20.8

Tab. 2 Quarterly change of turnover volume index, Total activities

(%)

Code NACE Rev.2	Description	III -15	IV -15	I -16	II -16	III -16
		II - 15	III - 15	IV - 15	I - 16	II - 16
Total by economic activities		11.4	4.4	-18.3	10.1	7.8
B+C	Industry	19.0	-6.3	-21.3	9.0	7.5
B	<i>Mining and quarrying</i>	8.5	-19.6	-28.1	9.6	3.6
C	<i>Manufacturing Industry</i>	22.6	-2.3	-15.7	8.8	8.9
D	Electricity, gas, steam	-16.3	29.6	11.7	-19.6	-12.8
E	Water supply; sewerage, waste management and remediation activities	-9.8	10.3	-9.3	13.5	-6.0
F	Construction	25.4	28.9	-37.2	22.5	6.5
G - N	Services	10.9	0.6	-15.9	12.2	10.3
G	<i>Trade</i>	11.6	0.4	-16.0	13.1	9.4
H (49-53)	<i>Transport and storage</i>	16.3	-13.5	-15.9	16.2	22.2
I (551)	<i>Hotels</i>	63.9	-20.0	-24.5	64.0	22.5
J (58-62)	<i>Information and communication</i>	-2.0	10.4	-13.5	0.8	9.4
M (71)	<i>Architectural and engineering activities</i>	3.3	6.3	-22.1	2.2	20.4
N (79)	<i>Travel agency</i>	0.6	-0.3	-15.7	-3.2	48.6

Annual change of the number employees index is 7.8 %. The annual change on the same quarter of 2015 was 10.5 %.

Tab. 3 Annual change of number of employees index, Total activities

(%)

Code	Description	III - 15	IV - 15	I - 16	II - 16	III - 16
NACE Rev.2		III - 14	IV - 14	I - 15	II - 15	III - 15
Total by economic activities		10.5	13.7	10.1	7.6	7.8
B+C	Industry	7.4	12.3	8.0	7.9	4.8
B	Mining and quarrying	-2.3	-2.3	-7.5	-10.2	-14.1
C	Manufacturing Industry	9.0	14.8	10.6	10.9	7.9
D	Electricity, gas, steam	14.6	14.2	8.8	2.4	0.8
E	Water supply; sewerage, waste management and remediation activities	15.3	21.0	8.7	3.5	4.0
F	Construction	8.9	12.5	8.0	4.2	9.5
G - N	Services	14.6	16.2	13.5	9.9	11.2
G	Trade	19.0	20.4	16.0	11.2	14.2
H (49-53)	Transport and storage	-1.1	-0.6	10.7	11.5	7.9
I (551)	Hotels	15.8	11.5	11.7	8.1	5.1
J (58-62)	Information and communication	9.1	17.2	10.6	8.0	8.2
M (71)	Architectural and engineering activities	11.8	14.2	6.8	9.2	-3.4
N (79)	Travel agency	27.5	22.0	27.8	20.6	19.9

Annual change of the Wages index is increased by 7,1 %. The annual change on the same quarter of 2015 was 9.0%.

Tab. 4 Annual change of wages index, Total activities

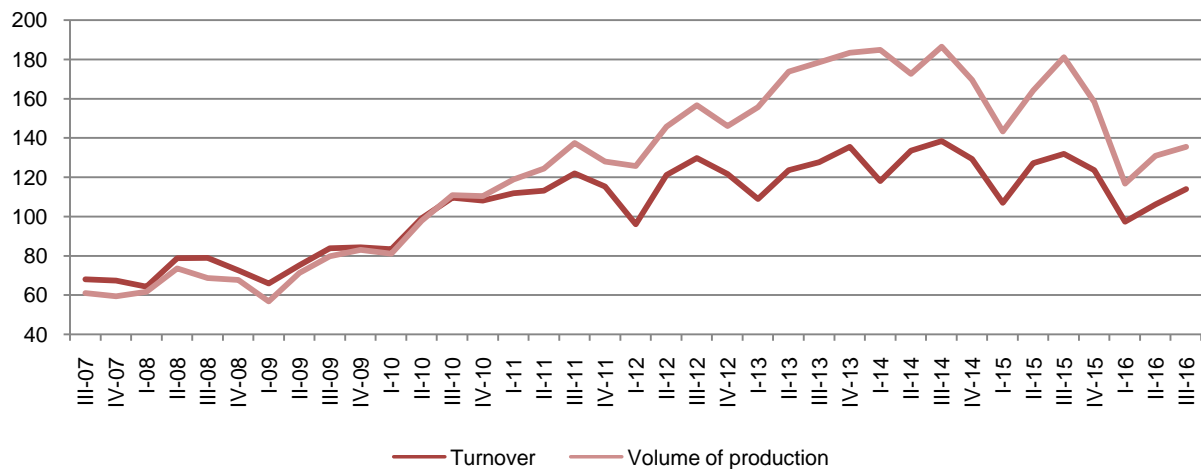
%

Code	Description	III - 15	IV - 15	I - 16	II - 16	III - 16
NACE Rev.2		III - 14	IV - 14	I - 15	II - 15	III - 15
Total by economic activities		9.0	7.6	5.3	5.8	7.1
B+C	Industry	4.3	4.2	-0.1	5.4	2.2
B	Mining and quarrying	-9.4	-19.2	-19.3	-7.0	-9.7
C	Manufacturing Industry	11.1	16.1	10.7	12.2	9.0
D	Electricity, gas, steam	1.3	-1.2	-5.9	-5.3	8.1
E	Water supply; sewerage, waste management and remediation activities	9.1	12.5	13.1	10.4	1.6
F	Construction	15.3	10.1	8.6	1.1	7.2
G - N	Services	12.3	10.8	10.4	9.7	12.7
G	Trade	16.7	19.7	14.8	15.5	17.3
H (49-53)	Transport and storage	-13.5	-13.3	4.9	2.7	0.5
I (551)	Hotels	13.3	6.9	13.9	7.5	4.0
J (58-62)	Information and communication	12.6	-0.1	-1.3	-4.6	6.7
M (71)	Architectural and engineering activities	19.2	19.3	4.8	5.3	9.3
N (79)	Travel agency	27.7	17.3	38.0	33.9	24.2

Industry, Electricity and Water

The turnover volume index in the third quarter 2016, reached 114.0 %.

Fig. 2 Indexes of turnover volume and production in Industry,(including Mining and quarrying and Manufacturing), 2010 = 100



Annual change of turnover volume index in the “Industry” activity (where are included “Mining and quarrying” and “Manufacturing”) present a decrease by 13.5 %. This decrease is indicated by “Mining and quarrying” activity by 34.3 %.

Referred to the same period of time “Electricity, gas, steam” increased by 1.6 %, meanwhile “Water supply; sewerage, waste management and remediation activities” activity increased by 6.7%.

Tab. 5 Annual change of the turnover volume index in Industry, Electricity and Water

(%)

Section	NACE Rev.2	Economic activity	III - 15	IV - 15	I - 16	II - 16	III - 16
			III - 14	IV - 14	I - 15	II - 15	III - 15
B-C	05-33	Industry	-4.7	-4.4	-9.0	-16.6	-13.5
B	05-09	<i>Mining and quarrying</i>	-32.5	-37.2	-36.6	-36.0	-34.3
C	10-33	<i>Manufacturing Industry</i>	8.6	10.4	5.5	-6.3	-2.4
D	35	<i>Electricity, gas, steam</i>	-7.3	-4.5	1.5	-2.4	1.6
E	36-39	<i>Water supply; sewerage, waste management and remediation activities</i>	-0.6	6.2	-18.0	3.3	6.7

Quarterly change of the turnover volume index presents an increase by 7.5 % in “Industry”. The “Manufacturing” activity has given the main impact by 8.9 %.

The volume turnover indicator decreased by 12.8 % in “Electricity, gas, steam” meanwhile in “Water supply; sewerage, waste management and remediation activities” decreased by 6.0 %.

Tab. 6 Quarterly change of the turnover volume index in Industry, Electricity and Water

(%)

Section	NACE Rev.2	Economic activity	III - 15	IV - 15	I - 16	II - 16	III - 16
			II - 15	III - 15	IV - 15	I - 16	II - 16
B-C	05-33	Industry	3.7	-6.3	-21.3	9.0	7.5
B	05-09	<i>Mining and quarrying</i>	0.9	-19.6	-28.1	9.6	3.6
C	10-33	<i>Manufacturing Industry</i>	4.5	-2.3	-15.7	8.8	8.9
D	35	<i>Electricity, gas, steam</i>	-16.2	29.6	11.7	-19.6	-12.8
E	36-39	<i>Water supply; sewerage, waste management and remediation activities</i>	-9.1	10.3	-9.3	13.5	-6.0

Annual change of the industrial production volume index in the third quarter 2016 presents a decrease by 25.2 % in the activities included in “Industry”. The main impact is given by the activity “Mining and quarrying” with a decrease by 39.3 %.

While the production volume of “Manufacturing” decreased by 11.2 % compared with the third quarter 2015.

Tab. 7 Annual change of the industrial production index in Industry, Electricity and Water

(%)

Section	NACE		Economic activity	III - 15	IV - 15	I - 16	II - 16	III - 16
	Rev.2			III - 14	IV - 14	I - 15	II - 15	III - 15
B-C	05-33	Industry		-2.9	-6.6	-18.5	-20.2	-25.2
B	05-09	<i>Mining and quarrying</i>		-27.1	-27.5	-39.4	-35.0	-39.3
C	10-33	<i>Manufacturing Industry</i>		23.0	13.4	3.8	-5.6	-11.2
D	35	<i>Electricity, gas, steam</i>		-5.7	-0.4	32.1	16.1	22.1
E	36-39	<i>Water supply; sewerage, waste management and remediation activities</i>		-3.3	-2.3	-23.9	8.9	-24.1

Quarterly change of the industrial production volume index in the third quarter 2016 presents an increase by 3.5 % in the activities covered by “Industry” compared with the second quarter 2016. The “Manufacturing” activity has given the main impact by 5.5 %.

Referring the same period of time, the industrial production volume index decreased in “Electricity, gas, steam” by 59.5 %, meanwhile “Water supply; sewerage, waste management and remediation activities” decreased by 34.2 %.

Tab. 8 Quarterly change of the industrial production index in Industry, Electricity and Water

(%)

Section	NACE		Economic activity	III - 15	IV - 15	I - 16	II - 16	III - 16
	Rev.2			II - 15	III - 15	IV - 15	I - 16	II - 16
B-C	05-33	Industry		10.3	-12.6	-26.3	12.2	3.5
B	05-09	<i>Mining and quarrying</i>		7.7	-19.0	-29.6	5.8	0.5
C	10-33	<i>Manufacturing Industry</i>		12.2	-8.4	-21.4	16.9	5.5
D	35	<i>Electricity, gas, steam</i>		-61.5	57.0	126.2	-15.1	-59.5
E	36-39	<i>Water supply; sewerage, waste management and remediation activities</i>		-5.5	2.9	-6.4	19.8	-34.2

The annual change of the number of employees index in “Industry” sector (where are included “Mining and Quarrying” and “Manufacturing”) increased by 4.8 %. This indicator increased in the “Manufacturing” activity by 7.9 %, “Water supply; sewerage, waste management and remediation activities” by 4.0 % and “Electricity, gas, steam” activity by 0.8 %.

Tab. 9 Annual change of the number of employees index in Industry, Electricity and Water

(%)

Section	NACE Rev.2	Economic activity	III - 15	IV - 15	I - 16	II - 16	III - 16
			III - 14	IV - 14	I - 15	II - 15	III - 15
B-C	05-33	Industry	7.4	12.3	8.0	7.9	4.8
B	05-09	<i>Mining and quarrying</i>	-2.3	-2.3	-7.5	-10.2	-14.1
C	10-33	<i>Manufacturing Industry</i>	9.0	14.8	10.6	10.9	7.9
D	35	<i>Electricity, gas, steam</i>	14.6	14.2	8.8	2.4	0.8
E	36-39	<i>Water supply; sewerage, waste management and remediation activities</i>	15.3	21.0	8.7	3.5	4.0

The quarterly change of number of employees index in “Industry” sector increased by 0.8 %.

Tab. 10 Quarterly change of the number of employees index in Industry, Electricity and Water

(%)

Section	NACE Rev.2	Economic activity	III - 15	IV - 15	I - 16	II - 16	III - 16
			II - 15	III - 15	IV - 15	I - 16	II - 16
B-C	05-33	Industry	3.8	3.8	0.4	-0.2	0.8
B	05-09	<i>Mining and quarrying</i>	3.5	-0.3	-9.0	-4.4	-0.9
C	10-33	<i>Manufacturing Industry</i>	3.8	4.5	1.8	0.4	1.1
D	35	<i>Electricity, gas, steam</i>	1.0	1.4	1.1	-1.2	-0.6
E	36-39	<i>Water supply; sewerage, waste management and remediation activities</i>	-0.7	2.1	7.0	-4.5	-0.3

The annual change of “Wages index” in the third quarter 2016 increased by 2.2 % in “Industry”, mainly indicated from “Manufacturing” activity by 9.0 %.

For the same comparable period this indicator in “Electricity, gas, steam” increased by 8.1 % meanwhile the activity “Water supply; sewerage, waste management and remediation activities” increased by 1.6 %.

Tab. 11 Annual change of the wages index in Industry, Electricity and Water

(%)

Section	NACE		Economic activity	III - 15	IV - 15	I - 16	II - 16	III - 16
	Rev.2			III - 14	IV - 14	I - 15	II - 15	III - 15
B-C	05-33	Industry		4.3	4.2	-0.1	5.4	2.2
B	05-09	<i>Mining and quarrying</i>		-9.4	-19.2	-19.3	-7.0	-9.7
C	10-33	<i>Manufacturing Industry</i>		11.1	16.1	10.7	12.2	9.0
D	35	<i>Electricity, gas, steam</i>		1.3	-1.2	-5.9	-5.3	8.1
E	36-39	<i>Water supply; sewerage, waste management and remediation activities</i>		9.1	12.5	13.1	10.4	1.6

Quarterly change of “Wages index” decreased by 0.9 % in “Industry”, mainly indicated by the decrease of “Mining and Quarrying” activity by 3.5 %.

Tab. 12 Quarterly change of the wages index in Industry, Electricity and Water

(%)

Section	NACE		Economic activity	III-15	IV-15	I-16	II-16	III-16
	Rev.2			II-15	III-15	IV-15	I-16	II-16
B-C	05-33	Industry		2.1	2.4	-2.4	3.3	-0.9
B	05-09	<i>Mining and quarrying</i>		-0.7	-7.8	-4.5	6.2	-3.5
C	10-33	<i>Manufacturing Industry</i>		3.3	6.5	0.1	1.9	0.3
D	35	<i>Electricity, gas, steam</i>		-2.9	0.6	0.7	-3.7	10.9
E	36-39	<i>Water supply; sewerage, waste management and remediation activities</i>		1.8	1.6	5.2	1.5	-6.3

Fig. 3 Indexes of turnover volume in Mining and Quarrying; Manufacturing; Electricity, gas and steam; Water supply, 2010 = 100

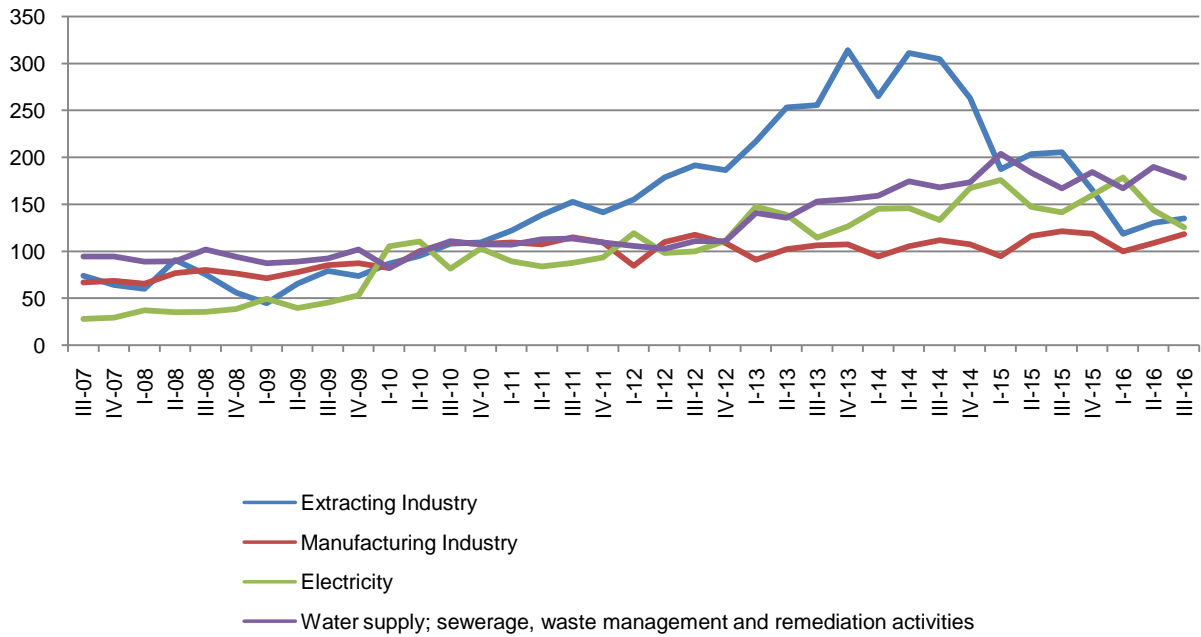
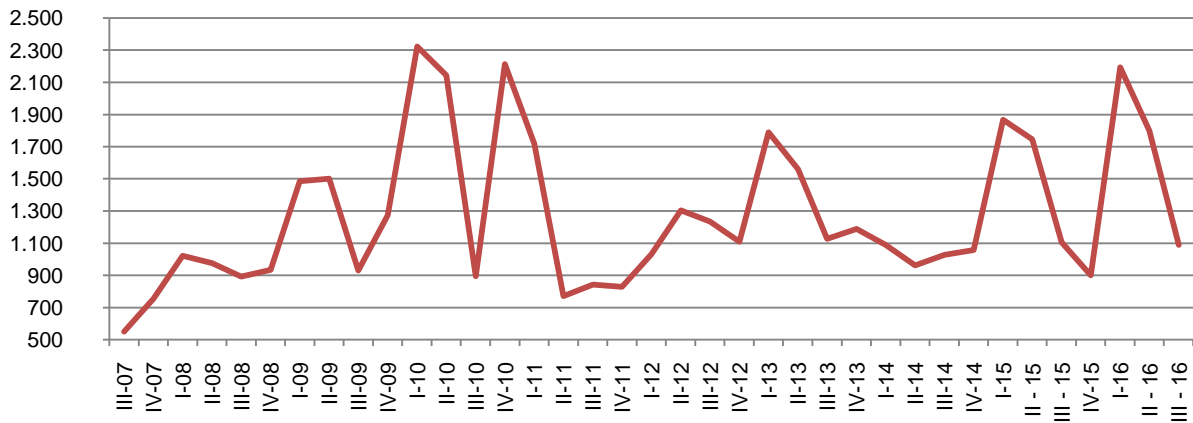


Fig. 4 Production of Electricity (000/kw-hours)



Main Industrial Grouping

The annual change of turnover volume index according Main Industrial Grouping, in the third quarter 2016 presents an increase in industrial grouping “Durable consumer goods” by 45.2 % and “Non durable consumer goods” by 4.1 %. Industrial grouping as “Intermediate goods”, “Energy” and “Capital goods” represent a decrease respectively by 15.9 %, 15.7 % and 2.6 %.

Tab. 13 Annual change of the turnover volume index by Main industrial grouping

(%)

Main Industrial Grouping	III - 15	IV - 15	I - 16	II - 16	III - 16
	III - 14	IV - 14	I - 15	II - 15	III - 15
Intermediate goods	-10.0	-13.4	-19.9	-22.9	-15.9
Energy	-21.6	-16.2	-17.9	-19.7	-15.7
Capital goods	18.1	16.6	20.5	10.1	-2.6
Durable consumer goods	-0.5	2.4	14.5	-1.8	45.2
Non durable consumer goods	17.6	25.7	16.8	8.0	4.1

The quarterly change of turnover volume index according Main Industrial Grouping, in the third quarter 2016 presents an increase in industrial grouping as “Durable consumer goods” by 43.1 %, “Non durable consumer goods” by 14.0 %, “Intermediate goods” by 3.6 %. Referred to the same period of time the main industrial groups that indicates a decrease are “Energy” by 9.0 % and “Capital goods” by 3.7 %.

Tab. 14 Quarterly change of the turnover volume index by Main industrial grouping

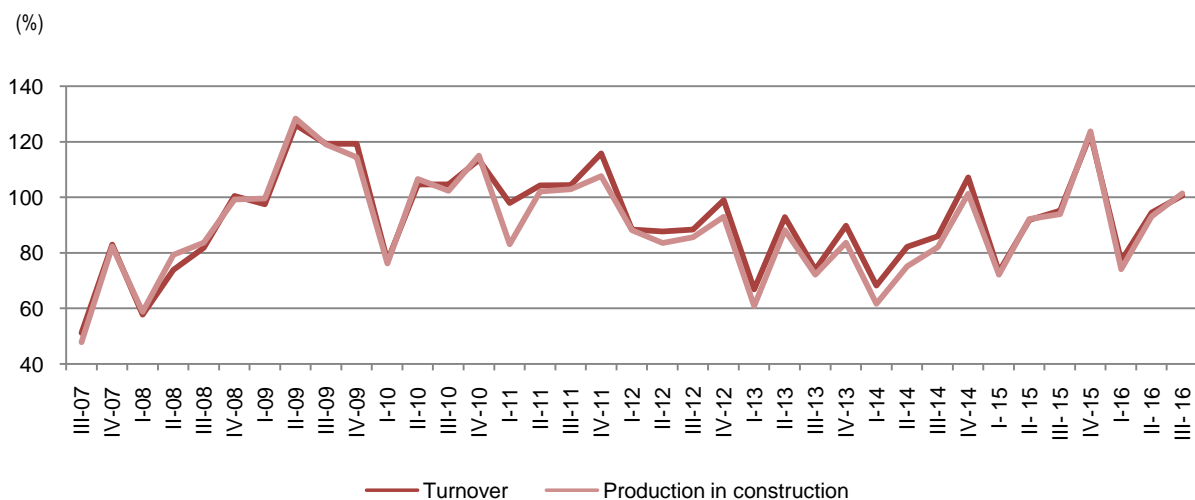
(%)

Main Industrial Grouping	III - 15	IV - 15	I - 16	II - 16	III - 16
	II - 15	III - 15	IV - 15	I - 16	II - 16
Intermediate goods	-5.0	-4.5	-25.1	13.5	3.6
Energy	-13.3	12.0	-8.3	-9.8	-9.0
Capital goods	8.8	12.6	-27.2	23.4	-3.7
Durable consumer goods	-3.2	18.2	-28.8	20.6	43.1
Non durable consumer goods	18.3	-5.5	-9.2	6.4	14.0

Construction

Turnover volume index in the “Construction” activity reached 100,6 in the third quarter 2016.

Fig. 5 Turnover volume and production in construction indexes , 2010 = 100



In the “Construction” activity, the **annual change** of the turnover volume index, in the third quarter 2016, increased by 5.7 %, meanwhile the annual change of production in construction index increased by 7.9 %.

The annual change of the number of employees index in the “Construction” activity in the third quarter 2016, increased by 9.5 %. The wages index increased by 7.2 % compared with the same period of the previous year.

Tab. 15 Annual changes of the construction indicators index

NACE Rev.2	Indicators	Annual change (%)				
		III - 15 III - 14	IV - 15 IV - 14	I - 16 I - 15	II - 16 II - 15	III - 16 III - 15
41-43	Turnover	10.7	14.5	5.3	2.9	5.7
	Production in construction	14.5	22.2	2.7	1.0	7.9
	Number of employees	8.9	12.5	8.0	4.2	9.5
	Wages	15.3	10.1	8.6	1.1	7.2

In the third quarter 2016, the **quarterly changes** of turnover volume and production in construction index increased respectively by 6.5 % and 8.9 %. The number of employees index in the “*Construction*” activity in the third quarter 2016 compared with the second quarter 2016, increased by 5.3 %, meanwhile the wages index increased by 5.3 %.

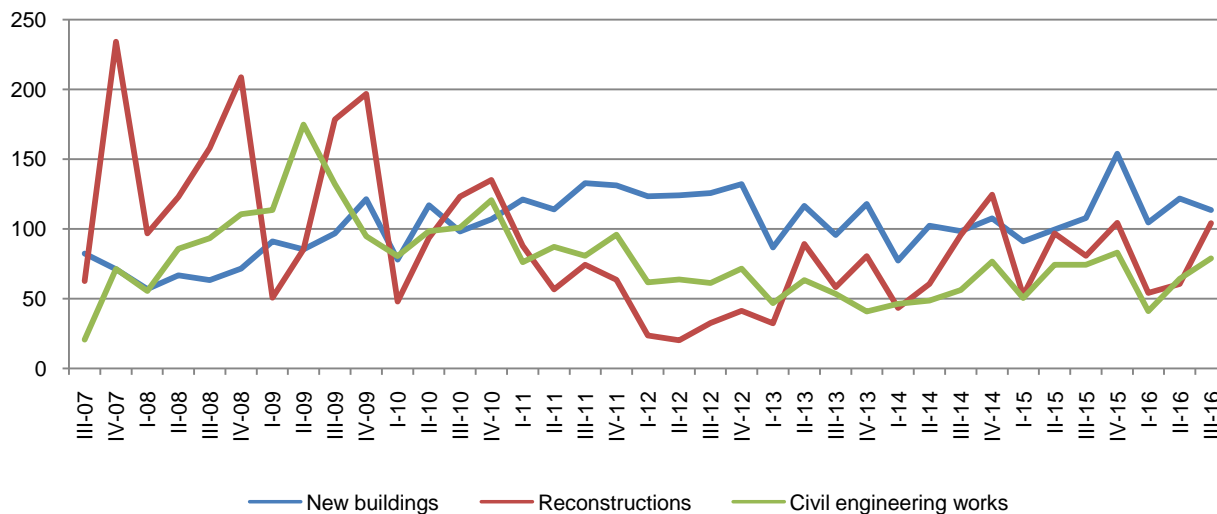
Tab. 16 Quarterly changes of the construction indicators index

(%)

NACE Rev.2	Indicators	III - 15	IV - 15	I - 16	II - 16	III - 16
		II - 15	III - 15	IV - 15	I - 16	II - 16
41-43	Turnover	3.7	28.9	-37.2	22.5	6.5
	Production in construction	1.9	31.7	-40.2	25.7	8.9
	Number of employees	0.1	6.9	-2.9	0.2	5.3
	Wages	-0.6	2.4	-1.1	0.4	5.3

Fig. 6 Production in construction indexes of New Buildings, Reconstructions and Civil Engineering Works, 2010=100

%



Services

In the third quarter 2016, **the annual change** of the turnover volume index in enterprises operating in the "Services" signed an increase by 4.6 %, mainly indicated by the activity " *Wholesale and retail sale of motor vehicles and repair of motor vehicles* " by 21.8 %, "Hotels" by 21.4 % and "Travel Agency" by 20.8 %.

Tab. 17 Annual change of the turnover volume index in Services

Code NACE Rev.2	Economic activity description	%				
		III - 15 III - 14	IV - 15 IV - 14	I - 16 I - 15	II - 16 II - 15	III - 16 III - 15
G-N	Services	-0.4	1.8	4.1	5.4	4.6
G(45)	<i>Wholesale and retail sale of motor vehicles and repair of motor vehicles</i>	4.3	26.1	12.7	14.6	21.8
G(46)	<i>Wholesale trade</i>	-0.6	0.9	1.9	3.4	3.3
H(49-53)	<i>Transport and storage</i>	-36.4	-40.0	-0.7	-0.8	3.3
I(5500)	<i>Hotels</i>	23.9	11.3	24.7	24.8	21.4
J(58, 61, 62)	<i>Information and communication</i>	-13.9	3.0	17.1	20.3	5.3
M(71)	<i>Architectural and engineering activities</i>	30.6	9.3	13.2	12.0	2.0
N(79)	<i>Travel agency</i>	20.5	21.8	6.9	3.0	20.8

The quarterly change of the turnover volume index in the activity of "Services", in the third quarter increased by 10.3 %, mainly indicated by "Travel Agencies" activity by 48.6% and "Hotels" by 22.5%.

Tab. 18 Quarterly change of the turnover volume index in Services

Code NACE Rev.2	Economic activity description	%				
		III - 15 II - 15	IV - 15 III - 15	I - 16 IV - 15	II - 16 I - 16	III - 16 II - 16
G-N	Services	11.1	0.6	-15.9	12.2	10.3
G(45)	<i>Wholesale and retail sale of motor vehicles and repair of motor vehicles</i>	6.6	20.2	-14.8	5.0	13.2
G(46)	<i>Wholesale trade</i>	8.4	-0.7	-16.6	15.2	8.3
H(49-53)	<i>Transport and storage</i>	17.4	-13.5	-15.9	16.2	22.2
I(551)	<i>Hotels</i>	25.9	-20.0	-24.5	64.0	22.5
J(58, 61, 62)	<i>Information and communication</i>	25.0	10.4	-13.5	0.8	9.4
M(71)	<i>Architectural and engineering activities</i>	32.3	6.3	-22.1	2.2	20.4
N(79)	<i>Travel agency</i>	26.6	-0.3	-15.7	-3.2	48.6

In the activity of "Services", in the third quarter 2016 in the number of employees index increased by 11.2 %, compared with the same period of the previous year. The main impact was given by the following activities: "Travel Agencies" by 19.9 % and "Wholesale trade" by 11.7 %.

Tab. 19 Annual change of the employees number index in Services

%

Code NACE Rev.2	Economic activity description	III - 15	IV - 15	I - 16	II - 16	III - 16
		III - 14	IV - 14	I - 15	II - 15	III - 15
G-N	Services	14.6	16.2	13.5	9.9	11.2
G(45)	Wholesale and retail sale of motor vehicles and repair of motor vehicles	24.8	18.9	7.8	10.4	13.6
G(46)	Wholesale trade	18.5	19.1	5.8	10.1	11.7
H(49-53)	Transport and storage	-1.1	-0.6	10.7	11.5	7.9
I(551)	Hotels	15.8	11.5	11.7	8.1	5.1
J(58, 61, 62)	Information and communication	9.1	17.2	10.6	8.0	8.2
M(71)	Architectural and engineering activities	11.8	14.2	6.8	9.2	-3.4
N(79)	Travel agency	27.5	22.0	27.8	20.6	19.9

The quarterly change of number of employees index in enterprises operating in the activity of "Services" in the third quarter of 2016 increased by 4.4%. The main impact was given by the activities of "Hotels" by 13.0 % and "Travel Agency" by 5.8 %.

Tab. 20 Quarterly change of the employees number index in Services

%

Code NACE Rev.2	Economic activity description	III - 15	IV - 15	I - 16	II - 16	III - 16
		II - 15	III - 15	IV - 15	I - 16	II - 16
G-N	Services	3.1	1.8	7.5	-2.6	4.4
G(45)	Wholesale and retail sale of motor vehicles and repair of motor vehicles	4.1	2.2	2.9	0.9	7.1
G(46)	Wholesale trade	2.5	0.6	3.4	3.3	4.0
H(49-53)	Transport and storage	1.3	0.6	6.7	2.6	-2.0
I(551)	Hotels	16.2	-10.0	-1.7	5.2	13.0
J(58, 61, 62)	Information and communication	1.4	2.7	0.9	2.7	1.6
M(71)	Architectural and engineering activities	0.8	11.6	-6.2	3.4	-10.8
N(79)	Travel agency	6.4	-3.4	7.8	8.8	5.8

In "Services" activity, **the annual change** in the third quarter of 2016 represents an increase of wages index by 12.7 %, mainly indicated by "Travel agency" activity by 24.2 % and "Wholesale trade" by 20.6 %.

Tab. 21 Annual change of the wage index in Services

%

Code NACE Rev.2	Economic activity description	III - 15 III - 14	IV - 15 IV - 14	I - 16 I - 15	II - 16 II - 15	III - 16 III - 15
G-N	Services	12.3	10.8	10.4	9.7	12.7
G(45)	Wholesale and retail sale of motor vehicles and repair of motor vehicles	16.5	15.0	14.2	16.3	16.2
G(46)	Wholesale trade	13.7	18.0	13.0	19.3	20.6
H(49-53)	Transport and storage	-13.5	-13.3	4.9	2.7	0.5
I(551)	Hotels	13.3	6.9	13.9	7.5	4.0
J(58, 61, 62)	Information and communication	12.6	-0.1	-1.3	-4.6	6.7
M(71)	Architectural and engineering activities	19.2	19.3	4.8	5.3	9.3
N(79)	Travel agency	27.7	17.3	38.0	33.9	24.2

The quarterly change of wages index in this activities increased by 3.0 % in the third quarter of 2016. This increase is mainly indicated by the activities of "Hotels" by 9.7 % and "Architectural and engineering activities" by 5.1 %.

Tab. 22 Quarterly change of the wage index in Services

%

Code NACE Rev.2	Economic activity description	III - 15 II - 15	IV - 15 III - 15	I - 16 IV - 15	II - 16 I - 16	III - 16 II - 16
G-N	Services	0.3	2.6	5.8	0.8	3.0
G(45)	Wholesale and retail sale of motor vehicles and repair of motor vehicles	5.0	3.9	5.5	1.1	4.9
G(46)	Wholesale trade	-0.4	3.3	9.5	5.9	0.7
H(49-53)	Transport and storage	3.6	1.6	-2.2	-0.3	1.4
I(551)	Hotels	13.4	-10.8	4.2	2.0	9.7
J(58, 61, 62)	Information and communication	-9.1	3.7	1.9	-0.7	1.7
M(71)	Architectural and engineering activities	1.2	4.0	0.8	-0.8	5.1
N(79)	Travel agency	8.2	-0.4	19.5	4.0	0.3

Methodology

General information

INSTAT, in the wake of its efforts to standardizing and approaching the Albanian statistics to the Eurostat and the standards of EU statistics, publicise the economical indicators such as The volume turnover, Production volume, The number of employees and Wages for these activities: Industry (where are included Mining and Quarrying and Manufacturing); Electricity, gas, steam; Treatment and water supply; Construction and Services (where is included the Trade; Transport and storage; Hotels; Information and communication; Architectural and engineering activities, Travel agency)

In the Trade, the survey covers the activity of the Retail Trade and Wholesale, and the Total sale of motor vehicles and repair of motor vehicles. The indicators of Retail Trade are publicised separately from this publication. For further information, please continue the link as follows:
<http://www.instat.gov.al/en/themes.aspx>

The methodological changes are refereed to:

- The application of the revised nomenclature of economic activities, NACE Rev. 2;
- The re-basing process, i.e. the weights within the structure of economy is updated with the base year from 2005 to 2010;
- The re-referencing process, i.e. the periods of reference are updated from 2005=100 to 2010=100.

The application of the Nomenclature of economic activities NACE Rev. 2 is based on the legal act approved through the Decree of the Council of Ministers N° 320, date 20. 05. 2014.

For more information, see http://www.instat.gov.al/media/248316/njofitim_per_media_ - ndryshimi_i_nomenklatur_s_s_veprimtarive_ekonomike_rev_2.pdf

The revised classification differs considerably from the existing classification in terms of structure, classification and methodological treatment of certain activities.

The process of passing of statistical units from NACE Rev. 1.1 to NACE Rev. 2 is performed through the construction of a converted matrix, based on the statistical information obtained from the Structural Business Survey of Enterprises 2010. Referring to the mentioned matrix, in general the activities pass from one classification to other one by one, for the other activities where the changes that the new classification brought into the sectors covered by short term statistics survey are the following:

- a. By old classification (NACE rev.1.1) the "Publication" activities (division 22) correspond to the new classification with new division 58, "Information and communication" section.

- b. Division 45, which correspond in the NACE Rev.1.1 with “Construction” activity, in the new NACE is split up in three activities, respectable: division 41 – “Construction of dwellings”, division 42 – “Civil engineering work”, division 43 – “Other specialized construction work” . Also part of this section is also group of activities related to “Real estate activities” which correspond with NACE rev.1.1 with group 70.1.
- c. The postal and courier activities, respectively in the classes 64.11 and 64.12 in NACE rev.1.1 passed to the “Transport and storage activities” division 53, in the NACE rev.2, “Post and courier activities”.
- d. Another novelty of the new classification is the pass of the “Collection and Treatment of waste” in the domain of the STST survey, which correspond partially with division 90 in the NACE rev.1.1, to the division 38 “Collection, treatment and management of waste” in NACE rev.2. Also here passed the “Recycle” activities” group 38.3, which correspond with NACE rev.1.1 with division 37, “recycle activities”.
- e. In the group 71.0, “Architectural and engineering activities” which correspond with NACE rev.2 with “Architectural and engineering, testing and technical analyses activities” description also are passed to the activities of testing and analyses, which correspond with group 74.3-74.8, “ Testing and technical analyses activities”.

The main indicator of the Turnover is used for the re-evaluation of the passing of the economic activities from the old to the new classification. The main methods used for the evaluation are two:

1. Micro approach method
2. Macro approach method

The first method was used in the first three years of the reclassification of the activities of the units on the individual level in the Statistical Business Register, 2010-2012.

The second method was used for the re-evaluation of the data in time series back for the period 2005-2010.

In order to reflect the changes that have taken place within the structure of economy, from the publication of the first quarter 2014 on, the base year of the Short term statistics is updated from 2005 to 2010.

The process of passing from the old to the new base consists of two steps: re-weighting, i.e. the weights used for the calculation of the indexes are updated from the base year 2005 to the base year 2010; and re-referencing, i.e., the periods of reference are updated from 2005=100 to 2010=100. In the Short term statistics the two steps are used simultaneously. The data series are equivalent to each other; the growth rates are the same, and a series is convertible to the other.

Information on the observation

Purpose – The short term statistics shows the trend of economic development of a country in quarterly periods, by which the police makers can develop a short term plan for the further development of the

country. By this publication the development of the main indicators such as industrial production, turnover, number of employees and wages, in time series are describe.

Coverage- based on main economic activity the main activities covered in the STS survey is as following:

- Industry - composed by Mining and quarrying and Manufacturing industry (05-33)
- Electricity, gas, and steam (35)
- Water supply; sewerage, waste management and remediation activities (36)
- Construction (41, 42, 43)

As the result of applied of the new classification, NACE Rev. 2, the activities that are included in the sector of Services with relevant codes are structured as follow:

- Total sale and repair of motor vehicles (45) and Wholesale, excluding the Total sale and repair of motor vehicles (46)
- Transportation and Storage (is included and the Postal and courier activities) (49-53)
- Accommodation and Food Services, Hotels (55.1)
- Information and Communication (58, 61, 62)
- Architectural and Engineering activities (71)
- Administrative Services and ancillary activities – Travel Agencies (79)

Services composed by: Wholesale trade, Wholesale and retail sale of mote vehicle and repair of motor vehicle; Hotel; Transport and storage; Information and communication; Travel agency, other services.

Model - The enterprises are selected from the Statistical Register of Enterprises. The enterprises with 1-9 employees are surveyed by sample survey, whereas the enterprises with 10 and more employees are surveyed exhaustively.

Data collection - The data are collected directly from enterprises with face to face interview through interviewers. The questionnaire is filled from the interviewers.

Indicators – The indicators are given in Index form, the quarterly changes are given in percentage, whereas the annual changes are given in percentage with reference to the base year, actually 2010=100. The data do not present absolute values.

Indexes – The indexes show the changes in time of a given variable, or of a group of variables. The Index Volume is calculated through the Laspeyres Formula. In order to avoid the prices impact, the indices are deflated with the proper price index by activities, such as the Industry indicator are deflated with Producer Price Index; Construction activity with Construction Cost Index; Hotel activity with Consumer Price Index, Transport with implicit price index calculated, etc.

The annual change in percentage - it measures in percentage the change of economic indicators of the actual quarter compared with the same quarter of the previous year.

The quarterly change in percentage – it measures in percentage the change of economic indicators of the actual quarter against compared with the previous quarter of the same year.

Revision – Indexes may be revised due to several reasons: additional information, the methodological changes, or re-evaluation of the used coefficients etc.

Definition of the main indicators

Turnover is the total amount realized by enterprises during the month from the selling of goods, selling of own products and services excluded VAT.

Number of persons working includes all persons who actually work in the observed unit. There are included, owners and co-owners and family members that helps in the activity and employees in the end of the quarter.

Employment index – shows the evolution of employment in observation unit.

Wages and salaries – are defined as the total remunerations, in cash or in kind payable to all persons counted on the payrolls, in return for work done during the accounting period.

Index of wages and salaries – the gross wages and salaries index approximates the development of the wages and salaries bill.

Main industrial grouping are a regroup of: Mining and quarrying, Manufacturing and Electricity activities, according to NACE Rev.2 as follows:

Total industry	NACE Rev.2
Intermediate goods	<ul style="list-style-type: none"> • 07-09 Mining of metal ores; Other mining and quarrying; Mining support service activities • 13000 Manufacturing of textiles • 16000 Manufacture of wood and of products of wood and cork, except furniture; manufacture of articles of straw and plaiting materials • 17000 Manufacture of paper and paper products • 20-21 Manufacturing of chemical and pharmaceutical products • 22000 Manufacture of rubber and plastics products • 23000 Manufacture of other non-metallic mineral products • 24000 Manufacture of basic metals • 255XX Forging, pressing, stamping and roll forming of metal; powder • 27000 Manufacturing of electrical equipment
Energy	<ul style="list-style-type: none"> • 05-06 Mining of coal and lignite; Extraction of crude petroleum and natural gas • 19000 Manufacture of coke and refined petroleum products • 35000 Electricity, gas, steam and air conditioning supply
Durable consumer goods	<ul style="list-style-type: none"> • 264XX Manufacture of consumer electronics • 31000 Manufacture of furniture • 32XXX Other industries n.e.c

Non-durable consumer goods	<ul style="list-style-type: none"> • 10000 Përpunimi i produkteve ushqimore • 11-12 Manufacture of beverages; Manufacture of tobacco products • 14000 Manufacture of wearing apparel • 15000 Manufacture of leather and related products • 18000 Printing and reproduction of recorded media • 32YYY Other industries n.e.c
----------------------------	---

Indicators – are in form of indices, annual and quarterly changes with base year 2010 = 100. The data are not in absolute value.

Indices - show the development of one and more variables over time. The formula used for calculation is Laspeyers.

Weights by Main Industrial Grouping:

Main Industrial Grouping	Weights by activities (Net sales)
Intermediate goods	27 %
Energy	42 %
Capital goods	3 %
Durable consumer goods	3 %
Non-durable consumer goods	25 %
Total	100 %