

Short Term Statistics

Third Quarter 2015

Tirana, 23 December: INSTAT publish “Short term statistics of economical enterprise” data of third quarter 2015 according the Nomenclature of Economical Activities, NACE Rev. 2, updated base from 2005 to 2010. The questionnaire covers: “Industry” (where are included “Mining and Quarrying” and “Manufacturing”), “Electricity, gas, steam”, “Water supply; sewerage, waste management and remediation activities”, “Construction” and “Services” (included the activity of Trade, Transport and storage, Hotels, Information and communication, Architectural and engineering activities, Travel agency) (see: Methodological elucidations pg.18).

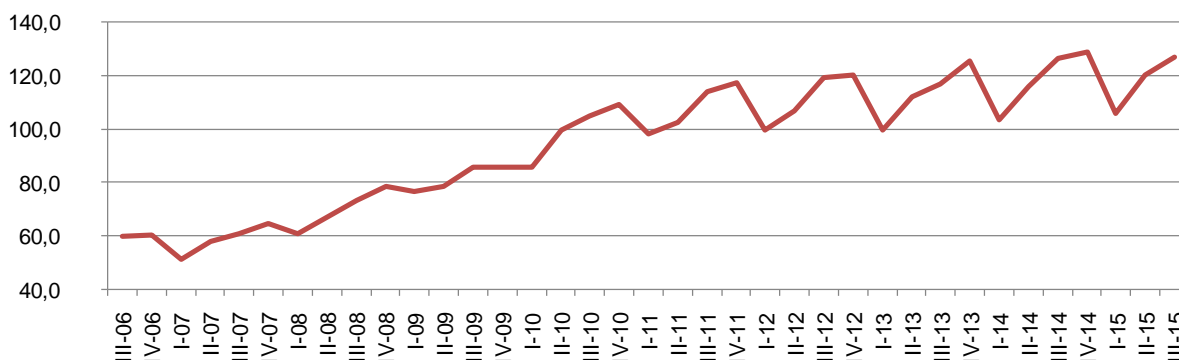
In the third quarter 2015, the volume turnover index was 126.9% against the base year (2010=100).

The annual change of this index presents an increase 0.5% in the activities covered in the quarterly survey, compared with the third quarter 2014. This change on the same quarter 2014 was increase 8.1 %.

The quarterly change of volume turnover index, in the third quarter 2015 presents an increase by 5.4 % compared with the previous quarter. This increase is mainly indicated by the activities “Trade”, “Construction” and “Manufacturing” respectively 7.5 %, 3.7 % and 1.7 %.

Fig. 1 Indexes of turnover in volume

(2010=100)

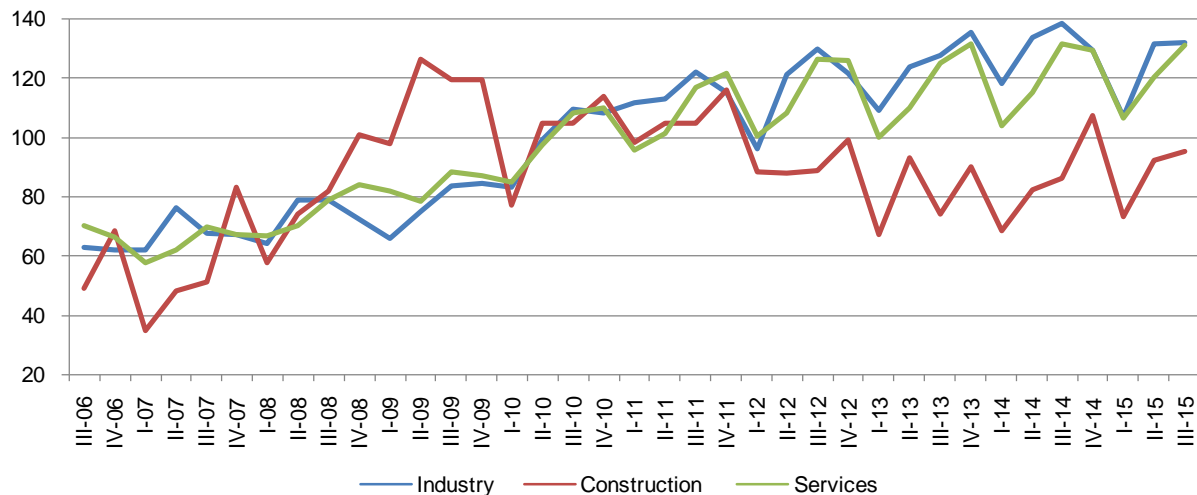


For Release 23/12/2015

Continue

Fig. 2 Indexes of turnover in Industry, Construction and Services

(2010=100)



Tab. 1 Annual change of turnover volume index, Total activities

(%)

Code NACE Rev.2	Description	Weights	III - 14	IV - 14	I - 15	II - 15	III - 15
			III - 13	IV - 13	I - 14	II - 14	III - 14
Total by economic activities		100.0	8.1	2.6	2.1	4.1	0.5
B+C	Industry	19.3	8.5	-4.5	-9.4	-1.5	-4.7
B	Mining and quarrying	6.2	19.1	-16.2	-29.2	-30.9	-32.5
C	Manufacturing Industry	13.1	5.0	0.0	0.2	13.2	8.6
D	Electricity, gas, steam	6.3	14.4	30.6	21.0	3.2	6.2
E	Water supply; sewerage, waste management and remediation activities	0.9	9.7	11.6	27.9	22.8	-0.6
F	Construction	12.1	16.2	19.3	7.3	11.8	10.7
G - N	Services	61.5	5.3	-1.4	2.3	4.4	-0.4
G	Trade	52.8	7.7	0.3	6.0	7.8	1.6
H (49-53)	Transport and storage*	2.5	-44.6	-15.0	-32.1	-34.0	-36.4
I (551)	Hotels	0.4	24.8	19.8	-3.2	14.0	23.9
J (58-62)	Information and communication	4.6	11.8	-23.1	-20.2	-21.0	-13.9
M (71)	Architectural and engineering activities	0.8	14.1	56.2	2.1	24.9	30.6
N (79)	Travel agency	0.5	35.5	17.1	32.1	11.0	20.5

* The weight structure for activities covered in Transport (railway, maritime and air transport), although there are differences as a result of lack of air transport, has not changed because the weights are revised for methodological reasons in t-2 period. Index changes in air transport will be reflected in the first quarter 2016.

Tab.2 Quarterly change of turnover volume index, Total activities

(%)

Code NACE Rev.2	Description	III - 14	IV - 14	I - 15	II - 15	III - 15
		II - 14	III - 14	IV - 14	I - 15	II - 15
Total by economic activities		9.1	2.1	-17.9	13.8	5.4
B+C	Industry	3.7	-6.6	-17.3	23.0	0.2
B	<i>Mining and quarrying</i>	-2.1	-13.6	-28.7	14.6	-4.4
C	<i>Manufacturing Industry</i>	6.1	-3.9	-11.8	26.0	1.7
D	Electricity, gas, steam	-8.8	25.8	5.0	-14.4	-6.1
E	Water supply; sewerage, waste management and remediation activities	-3.6	3.2	17.5	5.1	-22.0
F	Construction	4.7	24.6	-31.7	25.4	3.7
G - N	Services	14.2	-1.6	-17.9	13.0	8.9
G	<i>Trade</i>	14.1	-1.2	-15.8	13.6	7.5
H (49-53)	<i>Transport and storage</i>	21.7	-8.3	-49.2	16.3	17.4
I (551)	<i>Hotels</i>	15.8	-10.9	-32.6	63.9	25.9
J (58-62)	<i>Information and communication</i>	14.7	-7.7	-23.9	-2.0	25.0
M (71)	<i>Architectural and engineering activities</i>	2.1	27.0	-24.7	28.0	6.8
N (79)	<i>Travel agency</i>	16.6	-1.4	-4.0	0.6	26.6

Industry, Electricity and Water

The volume turnover in the third quarter 2015 decreased by 4.7 % in “Industry” (where are included “Mining and quarrying” and “Manufacturing”) compared with the third quarter 2014. This decrease is indicated by “Mining and quarrying” activity with 32.5 %.

Referred the same comparable period the “Manufacturing” activity in the volume turnover increased by 8.6 % while in the activity “Water supply; sewerage, waste management and remediation activities” this indicator decrease by 0.6 %.

Quarterly change of the volume turnover presents an increase by 0.2 % in “Industry” compared with the second quarter 2015. The “Manufacturing” activity has given the main impact by 1.7 %.

The volume turnover indicator increased by 4.4 % in “Mining and Quarrying” meanwhile “Water supply; sewerage, waste management and remediation activities” increased by 22 %.

The industrial production volume in the third quarter 2015 presents a decrease by 2.9 % in the activities covered by “Industry” sector compared with the same quarter of previous year. The main impact is given by the activity “Mining and quarrying” with a decrease by 27.1 %.

While the production volume of “Manufacturing” increased by 23 % referred the same comparable period.

The industrial production volume in the third quarter 2015 presents an increase by 6.1 % in the activities covered by “Industry” compared with the previous quarter. The “Manufacturing” activity has given the main impact by 9.7 %.

The industrial production volume during the third quarter 2015 is decreased in “Electricity, gas, steam” and “Water supply; sewerage, waste management and remediation activities” respectably by 66.1 % and 20.2 %, compared with the second quarter 2015.

The number of employees in “Industry” sector (where are included “Mining and Quarrying” and “Manufacturing”) increased by 6.9 % from third quarter 2015 to third quarter 2014.

Activities as “Electricity, gas, steam” and “Water supply; sewerage, waste management and remediation activities” this indicator increased respectable by 14.6 % and 15.3 %.

The quarterly change of number of employees in “Industry” sector results increase by 3.7 %.

During the third quarter 2015, “Wages” level is increased by 4.3 % in “Industry”, compared with the same quarter of the previous year, mainly indicated from “Manufacturing” activity by 11.1 %.

For the same comparable period this indicator in “Electricity, gas, steam” and “Water supply; sewerage, waste management and remediation activities” increased respectably by 1.3 % and 9.1 %.

During the third quarter 2015, “Wages” level is decreased by 2.1 % in “Industry”, compared with the previous quarter mainly indicated by “Manufacturing” by 3.3 %.

In the “Water supply; sewerage, waste management and remediation activities” wages increased by 1.8 %.

Fig. 3 Indexes of turnover volume and production in Mining and quarrying and Manufacturing Industry

(2010=100)

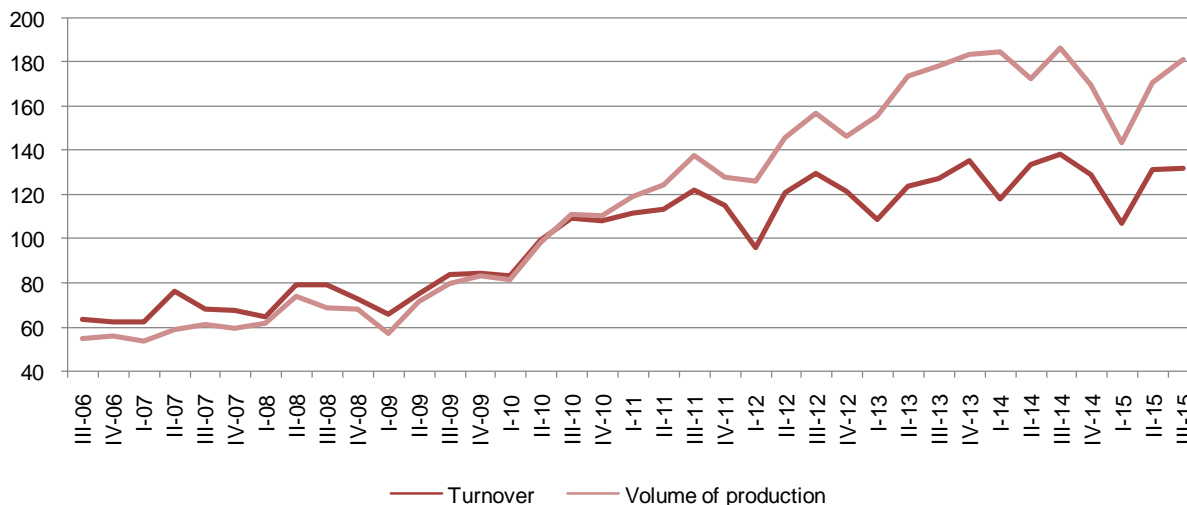


Fig. 4 Indexes of turnover volume in Mining and Quarrying; Manufacturing; Electricity, gas and steam; Water supply

(2010=100)

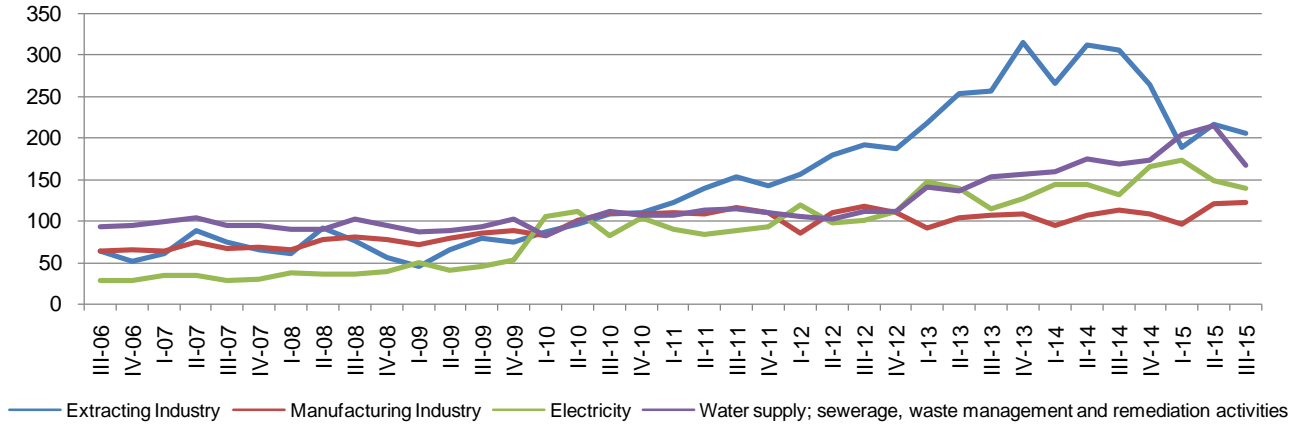
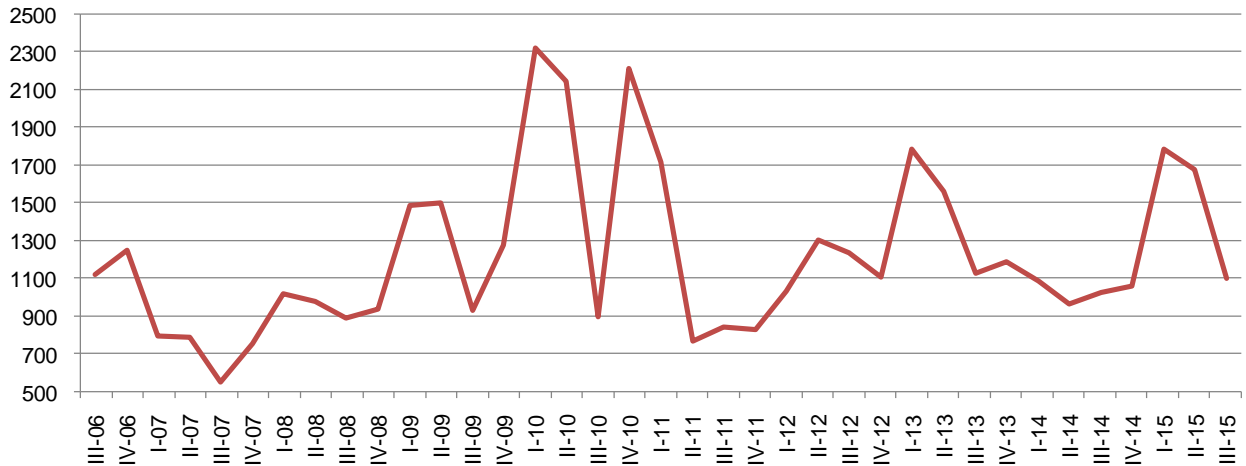


Fig. 5 Production of Electricity (000/kw-hours)



Tab. 3 Annual change of the turnover volume index in Industry, Electricity and Water

(%)

Section	NACE Rev.2	Economic activity	III - 14	IV - 14	I - 15	II - 15	III - 15
			III - 13	IV - 13	I - 14	II - 14	III - 14
B-C	05-33	Industry	8.5	-4.5	-9.4	-1.5	-4.7
B	05-09	<i>Mining and quarrying</i>	19.1	-16.2	-29.2	-30.9	-32.5
C	10-33	<i>Manufacturing Industry</i>	5.0	0.0	0.2	13.2	8.6
D	35	<i>Electricity, gas, steam</i>	14.4	30.6	21.0	3.2	6.2
E	36-39	<i>Water supply; sewerage, waste management and remediation activities</i>	9.7	11.6	27.9	22.8	-0.6

Tab. 4 Quarterly change of the turnover volume index in Industry, Electricity and Water

(%)

Section	NACE Rev.2	Economic activity	III - 14	IV - 14	I - 15	II - 15	III - 15
			II - 14	III - 14	IV - 14	I - 15	II - 15
B-C	05-33	Industry	3.7	-6.6	-17.3	23.0	0.2
B	05-09	<i>Mining and quarrying</i>	-2.1	-13.6	-28.7	14.6	-4.4
C	10-33	<i>Manufacturing Industry</i>	6.1	-3.9	-11.8	26.0	1.7
D	35	<i>Electricity, gas, steam</i>	-8.8	25.8	5.0	-14.4	-6.1
E	36-39	<i>Water supply; sewerage, waste management and remediation activities</i>	-3.6	3.2	17.5	5.1	-22.0

Tab. 5 Annual change of the industrial production index Industry, Electricity and Water

(%)

Section	NACE Rev.2	Economic activity	III - 14	IV - 14	I - 15	II - 15	III - 15
			III - 13	IV - 13	I - 14	II - 14	III - 14
B-C	05-33	Industry	4.5	-7.6	-22.4	-1.2	-2.9
B	05-09	<i>Mining and quarrying</i>	8.2	-21.9	-26.3	-18.9	-27.1
C	10-33	<i>Manufacturing Industry</i>	0.8	9.5	-18.5	16.8	23.0
D	35	<i>Electricity, gas, steam</i>	8.7	19.0	50.1	19.1	-27.9
E	36-39	<i>Water supply; sewerage, waste management and remediation activities</i>	-3.0	13.3	56.8	20.2	-3.3

Tab. 6 Quarterly change of the industrial production index Industry, Electricity and Water

(%)

Section	NACE Rev.2	Economic activity	III - 14	IV - 14	I - 15	II - 15	III - 15
			II - 14	III - 14	IV - 14	I - 15	II - 15
B-C	05-33	Industry	8.0	-9.1	-15.4	19.0	6.1
B	05-09	<i>Mining and quarrying</i>	12.7	-18.6	-15.8	5.0	1.2
C	10-33	<i>Manufacturing Industry</i>	4.1	-0.6	-14.2	31.5	9.7
D	35	<i>Electricity, gas, steam</i>	-44.0	48.6	44.6	-1.1	-66.1
E	36-39	<i>Water supply; sewerage, waste management and remediation activities</i>	-0.7	1.8	20.1	-1.0	-20.2

Tab. 7 Annual change of the number of employees index in Industry, Electricity and Water

(%)

Section	NACE Rev.2	Economic activity	III - 14	IV - 14	I - 15	II - 15	III - 15
			III - 13	IV - 13	I - 14	II - 14	III - 14
B-C	05-33	Industry	20.7	16.7	6.5	3.4	6.9
B	05-09	<i>Mining and quarrying</i>	10.1	12.8	5.3	3.3	-2.3
C	10-33	<i>Manufacturing Industry</i>	22.6	17.3	6.8	3.6	8.5
D	35	<i>Electricity, gas, steam</i>	6.4	9.3	7.5	12.2	14.6
E	36-39	<i>Water supply; sewerage, waste management and remediation activities</i>	1.6	-2.2	17.2	15.2	15.3

Tab. 8 Quarterly change of the number of employees index in Industry, Electricity and Water

(%)

Section	NACE Rev.2	Economic activity	III - 14	IV - 14	I - 15	II - 15	III - 15
			II - 14	III - 14	IV - 14	I - 15	II - 15
B-C	05-33	Industry	0.4	-0.5	3.5	0.0	3.7
B	05-09	<i>Mining and quarrying</i>	9.4	-0.4	-3.8	-1.5	3.5
C	10-33	<i>Manufacturing Industry</i>	-0.9	-0.5	4.8	0.3	3.8
D	35	<i>Electricity, gas, steam</i>	-1.1	1.8	6.1	5.1	1.0
E	36-39	<i>Water supply; sewerage, waste management and remediation activities</i>	-0.8	-2.7	19.1	0.3	-0.7

Tab. 9 Annual change of the wage index in Industry, Electricity and Water

(%)

Section	NACE		Economic activity	III - 14	IV - 14	I - 15	II - 15	III - 15
	Rev.2			III - 13	IV - 13	I - 14	II - 14	III - 14
B-C	05-33	Industry		19.7	13.0	8.4	4.2	4.3
B	05-09	Mining and quarrying		21.1	9.3	3.6	-1.9	-9.4
C	10-33	Manufacturing Industry		19.1	15.8	10.7	7.0	-11.1
D	35	Electricity, gas, steam		13.1	14.9	12.3	1.3	1.3
E	36-39	Water supply; sewerage, waste management and remediation activities		9.6	-7.3	6.4	0.4	9.1

Tab. 10 Quarterly change of the wage index in Industry, Electricity and Water

(%)

Section	NACE		Economic activity	III - 14	IV - 14	I - 15	II - 15	III - 15
	Rev.2			II - 14	III - 14	IV - 14	I - 15	II - 15
B-C	05-33	Industry		2.0	2.5	1.8	-2.1	2.1
B	05-09	Mining and quarrying		7.5	3.5	-4.3	-7.9	-0.7
C	10-33	Manufacturing Industry		-0.5	2.0	5.0	0.5	3.3
D	35	Electricity, gas, steam		-2.9	3.1	5.7	-4.3	-2.9
E	36-39	Water supply; sewerage, waste management and remediation activities		-6.2	-1.5	4.7	4.0	1.8

Construction

Turnover volume index, in the “Construction” activity, in the third quarter 2015 increased by 10.7 % compared with the third quarter 2014. Referred to the same period the construction volume increased by 14.5 %.

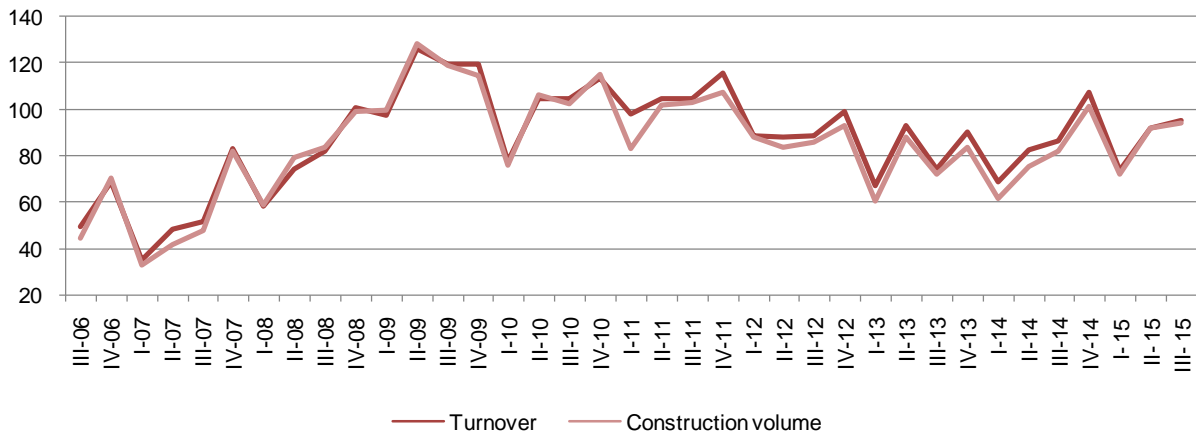
The number of employees in “Construction” activity in the third quarter 2015 increased by 8.9 % compared with the third quarter 2014 and the wages increased by 15.3 % during the same period.

In the third quarter 2015, turnover volume index increased by 3.7 % compared with the second quarter 2015 meanwhile the construction volume index increased by 1.9 % during the same period.

The number of employees in “Construction” activity in the third quarter 2015 increased by 0.1% compared with the second quarter 2015 while the wages decreased by 0.6 %.

Fig. 6 Turnover volume and Construction volume indexes

(2010=100)



Tab. 11 Annual changes of the construction indicators index

(%)

NACE Rev.2	Indicators	III - 14	IV - 14	I - 15	II - 15	III - 15
		III - 13	IV - 13	I - 14	II - 14	III - 14
41-43	Turnover volume	16.2	19.3	7.3	11.8	10.7
	Construction volume	13.8	21.1	17.1	22.7	14.5
	Number of employees	20.7	24.7	10.2	14.1	8.9
	Wages	3.8	16.3	12.4	20.0	15.3

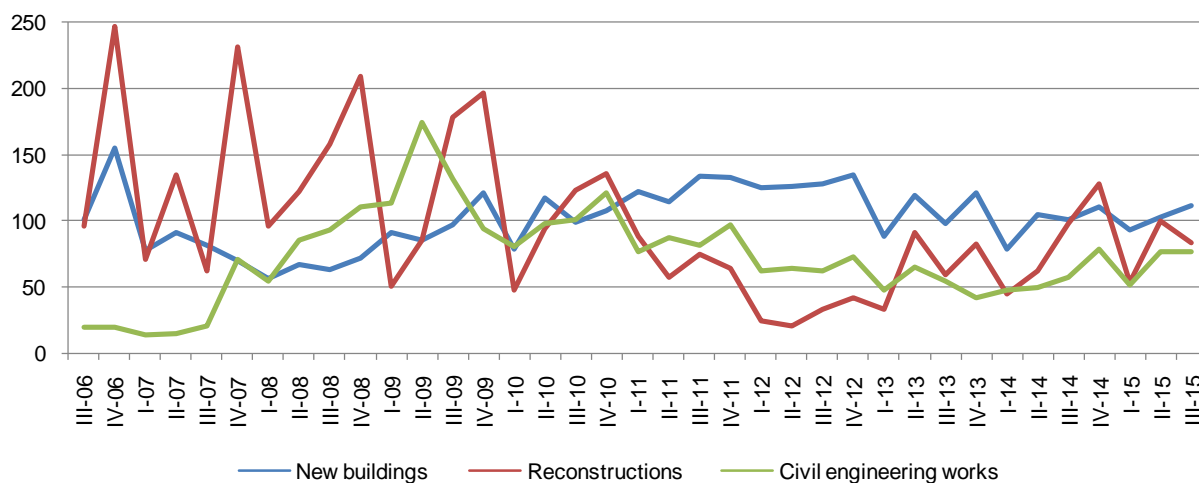
Tab. 12 Quarterly changes of the construction indicators index

(%)

NACE Rev.2	Indicators	III - 14	IV - 14	I - 15	II - 15	III - 15
		II - 14	III - 14	IV - 14	I - 15	II - 15
41-43	Turnover volume	4.7	24.6	-31.7	25.4	3.7
	Construction volume	9.2	23.5	-28.8	27.8	1.9
	Number of employees	4.9	3.6	1.1	3.9	0.1
	Wages	3.4	7.2	0.4	7.8	-0.6

Fig. 7 Construction volume indexes of New Buildings, Reconstruction and Civil Engineering Works

(2010=100)



Services

In the third quarter 2015, the volume turnover index in activities of “Services” decreased by 0.4 % compared with the third quarter 2014, mainly indicated from the activities of “Wholesale trade”, “Information and Communication” and “Transport and storage” respectively by 0.6 %, 13.9 % and 36.4 %.

In the third quarter 2015, the volume turnover index in activities of “Services” increased by 8.9 % compared with the previous quarter, mainly indicated from “Wholesale trade” and “Transport and storage” respectively by 5.7 % and 17.4 %.

In the third quarter 2015, the number of employees index in the “Services” activities increased by 14.6 % compared with the same period of previous year, mainly indicated from “Wholesale trade” and “Information and Communication” activities respectively by 18.5 % and 9.1 %.

In the third quarter 2015, the number of employees’ index in the “Services” activity increased by 3.1 % compared with the second quarter 2015. Main impact is from the activity “Wholesale trade” and “Information and Communication” respectively by 2.5 % and 1.4 %.

In the “Services” activity in third quarter 2015, the wage index increased by 12.3 % compared with the same period of the previous year. Main impact is from “Wholesale trade” by 13.7 % and “Information and Communication” by 12.6 %.

In the third quarter 2015 in the “Services” activity, the wage index increased by 0.3 % compared with the second quarter 2015. Main impact is from “Transport and Storage” and “Hotels” respectively by 3.6% and 13.4 %.

Wholesale and retail sale and repair of motor vehicles and Wholesale

In the third quarter 2015, in the activity “Wholesale” the volume turnover index decreased by 0.6 % while in activity “Wholesale and retail sale and repair of motor vehicles” increased by 4.3 % compared with the same period of the previous year.

Quarterly change, in the activity “Wholesale” and “Wholesale and retail sale and repair of motor vehicles”, the volume turnover index presents an increase respectively by 5.7 % and 6.6 % compared with the second quarter 2015.

In the third quarter 2015, in activity “Wholesale”, the annual change of index of the number of employees increased by 18.5 % compared with the third quarter 2014.

Compared with the second quarter 2015 this indicator increased by 2.5 %.

In the activity "Wholesale" in the third quarter 2015, the wage index increased by 13.7 % compared with the same period of previous year, meanwhile "Wholesale and retail sale and repair of motor vehicles" increased by 16.5 %.

In quarterly change, wages in "Wholesale" activity decreased by 0.4 % compared with the second quarter 2015, while "Wholesale and retail sale and repair of motor vehicles" increased by 5 %.

Transport and Storage (included "Post" activity)

In the activity "Transport and Storage", the volume turnover index decreased by 36.4 % compared with the third quarter 2014.

Quarterly change of the volume turnover index, in activity of the "Transport and Storage" increased by 17.4 %.

The number of employees in the activity "Transport and Storage" decreased by 1.1 % in the third quarter 2015 compared with the third quarter 2014.

The number of employees in the activity "Transport and Storage" increased by 1.3 % in the third quarter 2015 compared with the second quarter 2015.

The annual change of wages index in the activity "Transport and Storage" presents a decrease by 13.5 %.

The quarterly change of wages index in the activity "Transport and Storage" is increased by 3.6 %.

Hotels

In the "Hotels" activity, the volume turnover index increased by 23.9 % in the third quarter 2015 compared with the third quarter 2014.

The quarterly change of the volume turnover index represents an increase by 25.9 % in "Hotels" activity compared with the second quarter 2015.

In the third quarter 2015, in "Hotels" activity, the annual change of the index of number employees represents an increase by 15.8 % meanwhile the quarterly change represents an increase by 16.2 %.

In the third quarter 2015, in “Hotels” activity, the wages index represents an increase by 13.3 % compared with the third quarter 2014 meanwhile compared with the second quarter 2015 this indicator increased by 13.4 %.

Information and Communication

In the “Information and communication” activity, the volume turnover index, decreased by 13.9 % in the third quarter 2015 compared with third quarter 2014.

The quarterly change of the volume turnover index in “Information and communication” activity represents an increase by 25 % compared with the second quarter 2015.

In the third quarter 2015, in “Information and communication” activity, annual changes of index the number of employees represent an increase by 9.1 % compared with third quarter 2014..

In the third quarter 2015, in “Information and communication” activity quarterly change of the number of employees index represent an increase by 1.4 %.

In the third quarter 2015, in the “Information and communication” activity, annual change of the wages index increased by 12.6 % compared with the third quarter 2014 while compared with the second quarter 2015 this indicator decreased by 9.1 %.

Architectural and Engineering activities

In the section “Architectural and engineering” activity the volume turnover index increased by 30.6 % in the third quarter 2015 compared with third quarter 2014.

The quarterly change of the volume turnover index represents an increase by 6.8 % compared with the previous quarter.

In the third quarter 2015, in “Architectural and Engineering” activity, annual change of the number of employees index increased by 11.8 % meanwhile the quarterly change of the number of employees index increased by 0.8 %.

The annual change of the wages index represents an increase by 19.2 % compared with the third quarter 2014.

In the enterprises of this activity, the wages index increased by 1.2 % compared with the second quarter 2015.

Travel Agency

In the section “Travel agency” activity, the volume turnover index increased by 20.5 % in the third quarter 2015 compared with the third quarter 2014.

The quarterly change of the volume turnover index represents an increase by 26.6 % compared with the previous quarter.

In the third quarter 2015, in “Travel agency” activity, annual change of the number of employees index represents an increase by 27.5 % compared with the third quarter 2014. The number of employees index represents an increase by 6.4 % compared with previous quarter.

The wages index represents an increase by 27.7 % compared with the third quarter 2014 meanwhile compared with the previous quarter this indicator increased by 8.2 %.

Tab. 13 Annual change of the turnover volume index in Services

(%)

Code NACE Rev.2	Economic activity description	III - 14	IV - 14	I - 15	II - 15	III - 15
		III - 13	IV - 13	I - 14	II - 14	III - 14
G-N	Services	5.3	-1.4	2.3	4.4	-0.4
G(45)	Wholesale and retail sale of motorvehicles and repair of motorvehicles	8.3	10.5	9.2	6.7	4.3
G(46)	Wholesale trade	8.0	-0.8	6.6	9.3	-0.6
H(49-53)	Transport and storage	-44.6	-15	-32.1	-34.0	-36.4
I(5500)	Hotels	24.8	19.8	-3.2	14.0	23.9
J(58, 61, 62)	Information and communication	11.8	-23.1	-20.2	-21.0	-13.9
M(71)	Architectural and engineering activities	14.1	56.2	2.1	24.9	30.6
N(79)	Travel agency	35.5	17.1	32.1	11.0	20.5

Tab. 14 Quarterly change of the turnover volume index in Services

(%)

Code NACE Rev.2	Economic activity description	III - 14	IV - 14	I - 15	II - 15	III - 15
		II - 14	III - 14	IV - 14	I - 15	II - 15
G-N	Services	14.2	-1.6	-17.9	13.0	8.9
G(45)	Wholesale and retail sale of motorvehicles and repair of motorvehicles	9.0	-0.5	-4.7	3.2	6.6
G(46)	Wholesale trade	16.2	-2.2	-17.4	16.4	5.7
H(49-53)	Transport and storage	21.7	-8.3	-49.2	16.3	17.4
I(5500)	Hotels	15.8	-10.9	-32.6	63.9	25.9
J(58, 61, 62)	Information and communication	14.7	-7.7	-23.9	-2.0	25.0
M(71)	Architectural and engineering activities	2.1	27.0	-24.7	28.0	6.8
N(79)	Travel agency	16.6	-1.4	-4.0	0.6	26.6

Tab. 15 Annual change of the employees number index in Services

Code NACE Rev.2	Economic activity description	(%)				
		III - 14	IV - 14	I - 15	II - 15	III - 15
		III - 13	IV - 13	I - 14	II - 14	III - 14
G-N	Services	15.2	12.8	13.4	7.3	14.6
G(45)	Wholesale and retail sale of motorvehicles and repair of motorvehicles	3.9	10.5	18.1	5.8	24.8
G(46)	Wholesale trade	17.6	15.1	22.8	20.3	18.5
H(49-53)	Transport and storage	-2.9	4.6	-2.7	-1.2	-1.1
I(5500)	Hotels	22.0	26.5	10.4	11.7	15.8
J(58, 61, 62)	Information and communication	19.8	4.4	4.7	7.0	9.1
M(71)	Architectural and engineering activities	21.6	3.8	3.7	-0.2	11.8
N(79)	Travel agency	-1.5	1.2	2.2	22.2	27.5

Tab. 16 Quarterly change of the employees number index in Services

Code NACE Rev.2	Economic activity description	(%)				
		III - 14	IV - 14	I - 15	II - 15	III - 15
		II - 14	III - 14	IV - 14	I - 15	II - 15
G-N	Services	-3.4	0.4	10.1	0.6	3.1
G(45)	Wholesale and retail sale of motorvehicles and repair of motorvehicles	-11.8	7.3	13.5	-1.5	4.1
G(46)	Wholesale trade	4.1	0.1	16.4	-0.8	2.5
H(49-53)	Transport and storage	1.2	0.0	-4.1	1.8	1.3
I(5500)	Hotels	12.1	-6.6	-1.8	8.6	16.2
J(58, 61, 62)	Information and communication	-0.5	-4.4	6.9	5.2	1.4
M(71)	Architectural and engineering activities	-10.0	9.2	0.3	1.2	0.8
N(79)	Travel agency	2.0	0.9	3.0	15.3	6.4

Tab. 17 Annual change of the wage index in Services

Code NACE Rev.2	Economic activity description	(%)				
		III - 14	IV - 14	I - 15	II - 15	III - 15
		III - 13	IV - 13	I - 14	II - 14	III - 14
G-N	Services	9.1	8.8	9.2	7.5	12.3
G(45)	Wholesale and retail sale of motorvehicles and repair of motorvehicles	-2.7	-1.2	8.9	2.0	16.5
G(46)	Wholesale trade	18.0	16.7	20.6	14.9	13.7
H(49-53)	Transport and storage	-23.4	-4.8	-19.0	-20.9	-13.5
I(5500)	Hotels	20.6	23.4	10.2	12.8	13.3
J(58, 61, 62)	Information and communication	23.7	12.3	5.7	16.1	12.6
M(71)	Architectural and engineering activities	13.7	-9.6	13.1	18.0	19.2
N(79)	Travel agency	-10.0	-5.7	12.0	20.3	27.7

Tab. 18 Quarterly change of the wage index in Services

(%)

Code NACE Rev.2	Economic activity description	III - 14	IV - 14	I - 15	II - 15	III - 15
		II - 14	III - 14	IV - 14	I - 15	II - 15
G-N	Services	-4.1	4.0	6.2	1.4	0.3
G(45)	Wholesale and retail sale of motorvehicles and repair of motorvehicles	-8.1	5.3	6.1	-0.7	5.0
G(46)	Wholesale trade	0.6	-0.4	14.3	0.3	-0.4
H(49-53)	Transport and storage	-5.3	1.4	-19.1	1.7	3.6
I(5500)	Hotels	12.9	-5.5	-2.2	8.1	13.4
J(58. 61. 62)	Information and communication	-6.3	16.9	3.2	2.7	-9.1
M(71)	Architectural and engineering activities	0.2	3.9	14.7	-1.2	1.2
N(79)	Travel agency	2.0	8.4	1.5	7.2	8.2

Methodological elucidations

General information

INSTAT, in the wake of its efforts to standardizing and approaching the Albanian statistics to the Eurostat and the standards of EU statistics, publicise the economical indicators such as The volume turnover, Production volume, The number of employees and Wages for these activities: Industry (where are included Mining and Quarrying and Manufacturing); Electricity, gas, steam; Treatment and water supply; Construction and Services (where is included the Trade; Transport and storage; Hotels; Information and communication; Architectural and engineering activities, Travel agency)

In the Trade, the survey covers the activity of the Retail Trade and Wholesale, and the Total sale of motor vehicles and repair of motor vehicles. The indicators of Retail Trade are publicised separately from this publication. For further information, please continue the link as follows:
<http://www.instat.gov.al/en/themes.aspx>

The methodological changes are refereed to:

- The application of the revised nomenclature of economic activities, NACE Rev. 2;
- The re-basing process, i.e. the weights within the structure of economy is updated with the base year from 2005 to 2010;
- The re-referencing process, i.e. the periods of reference are updated from 2005=100 to 2010=100.

The application of the Nomenclature of economic activities NACE Rev. 2 is based on the legal act approved through the Decree of the Council of Ministers N° 320, date 20. 05. 2014.

For more information, see http://www.instat.gov.al/media/248316/njoftim_per_media_ndryshimi_i_nomenklatur_s_s_veprimtarive_ekonomike_rev_2.pdf

The revised classification differs considerably from the existing classification in terms of structure, classification and methodological treatment of certain activities.

The process of passing of statistical units from NACE Rev. 1.1 to NACE Rev. 2 is performed through the construction of a converted matrix, based on the statistical information obtained from the Structural Business Survey of Enterprises 2010. Referring to the mentioned matrix, in general the activities pass from one classification to other one by one, for the other activities where the changes that the new classification brought into the sectors covered by short term statistics survey are the following:

- a. By old classification (NACE rev.1.1) the "Publication" activities (division 22) correspond to the new classification with new division 58, "Information and communication" section.

- b. Division 45, which correspond in the NACE Rev.1.1 with “Construction” activity, in the new NACE is split up in three activities, respectable: division 41 – “Construction of dwellings”, division 42 – “Civil engineering work”, division 43 – “Other specialized construction work” . Also part of this section is also group of activities related to “Real estate activities” which correspond with NACE rev.1.1 with group 70.1.
- c. The postal and courier activities, respectively in the classes 64.11 and 64.12 in NACE rev.1.1 passed to the “Transport and storage activities” division 53, in the NACE rev.2, “Post and courier activities”.
- d. Another novelty of the new classification is the pass of the “Collection and Treatment of waste” in the domain of the STST survey, which correspond partially with division 90 in the NACE rev.1.1, to the division 38 “Collection, treatment and management of waste” in NACE rev.2. Also here passed the “Recycle” activities” group 38.3, which correspond with NACE rev.1.1 with division 37, “recycle activities”.
- e. In the group 71.0, “Architectural and engineering activities” which correspond with NACE rev.2 with “Architectural and engineering, testing and technical analyses activities” description also are passed to the activities of testing and analyses, which correspond with group 74.3-74.8, “Testing and technical analyses activities”.

The main indicator of the Turnover is used for the re-evaluation of the passing of the economic activities from the old to the new classification. The main methods used for the evaluation are two:

1. Micro approach method
2. Macro approach method

The first method was used in the first three years of the reclassification of the activities of the units on the individual level in the Statistical Business Register, 2010-2012.

The second method was used for the re-evaluation of the data in time series back for the period 2005-2010. In order to reflect the changes that have taken place within the structure of economy, from the publication of the first quarter 2014 on, the base year of the Short term statistics is updated from 2005 to 2010.

The process of passing from the old to the new base consists of two steps: re-weighting, i.e. the weights used for the calculation of the indexes are updated from the base year 2005 to the base year 2010; and re-referencing, i.e., the periods of reference are updated from 2005=100 to 2010=100. In the Short term statistics the two steps are used simultaneously. The data series are equivalent to each other; the growth rates are the same, and a series is convertible to the other.

Information on the observation

Purpose – The short term statistics shows the trend of economic development of a country in quarterly periods, by which the police makers can develop a short term plan for the further development of the

country. By this publication the development of the main indicators such as industrial production, turnover, number of employees and wages, in time series are describe.

Coverage- based on main economic activity the main activities covered in the STS survey is as following:

- Industry - composed by Mining and quarrying and Manufacturing industry (05-33)
- Electricity, gas, and steam (35)
- Water supply; sewerage, waste management and remediation activities (36)
- Construction (41, 42, 43)

As the result of applied of the new classification, NACE Rev. 2, the activities that are included in the sector of Services with relevant codes are structured as follow:

- Total sale and repair of motor vehicles (45) and Wholesale, excluding the Total sale and repair of motor vehicles (46)
- Transportation and Storage (is included and the Postal and courier activities) (49-53)
- Accommodation and Food Services, Hotels (55.1)
- Information and Communication (58, 61, 62)
- Architectural and Engineering activities (71)
- Administrative Services and ancillary activities – Travel Agencies (79)

Services composed by: Wholesale trade, Wholesale and retail sale of mote vehicle and repair of motor vehicle; Hotel; Transport and storage; Information and communication; Travel agency, other services.

Model - The enterprises are selected from the Statistical Register of Enterprises. The enterprises with 1-9 employees are surveyed by sample survey, whereas the enterprises with 10 and more employees are surveyed exhaustively.

Data collection - The data are collected directly from enterprises with face to face interview through interviewers. The questionnaire is filled from the interviewers.

Indicators – The indicators are given in Index form, the quarterly changes are given in percentage, whereas the annual changes are given in percentage with reference to the base year, actually 2010=100. The data do not present absolute values.

Indexes – The indexes show the changes in time of a given variable, or of a group of variables. The Index Volume is calculated through the Laspeyres Formula. In order to avoid the prices impact, the indices are deflated with the proper price index by activities, such as the Industry indicator are deflated with Producer Price Index; Construction activity with Construction Cost Index; Hotel activity with Consumer Price Index, Transport with implicit price index calculated, etc.

The annual change in percentage - it measures in percentage the change of economic indicators of the actual quarter compared with the same quarter of the previous year.

The quarterly change in percentage – it measures in percentage the change of economic indicators of the actual quarter against compared with the previous quarter of the same year.

Revision – Indexes may be revised due to several reasons: additional information, the methodological changes, or re-evaluation of the used coefficients etc.

Definition of the main indicators

Turnover is the total amount realized by enterprises during the month from the selling of goods, selling of own products and services excluded VAT.

Number of persons working includes all persons who actually work in the observed unit. There are included, owners and co-owners and family members that helps in the activity and employees in the end of the quarter.

Employment index – shows the evolution of employment in observation unit.

Wages and salaries – are defined as the total remunerations, in cash or in kind payable to all persons counted on the payrolls, in return for work done during the accounting period.

Index of wages and salaries – the gross wages and salaries index approximates the development of the wages and salaries bill.