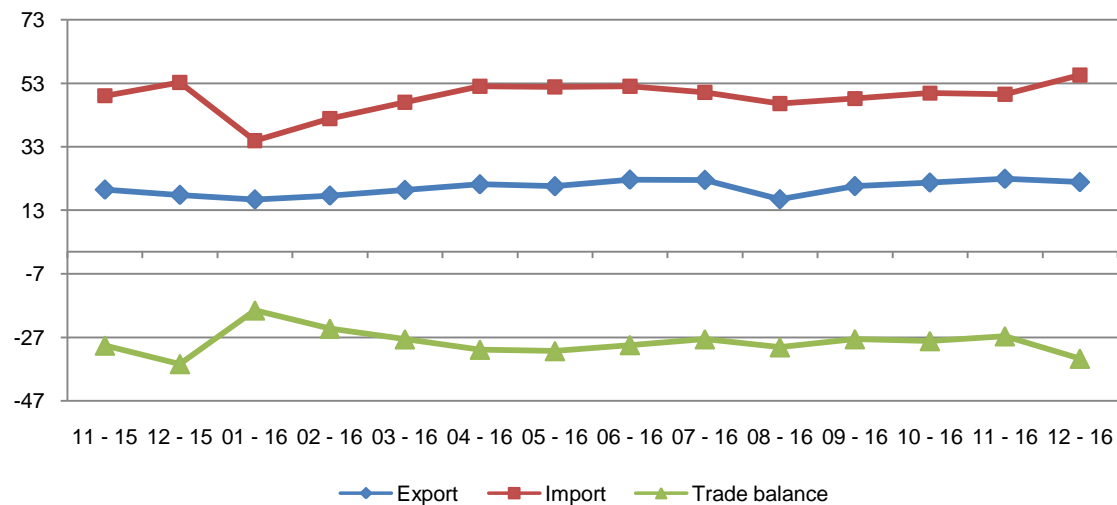


Foreign Trade in Goods

December, 2016

Tirana, January 17, 2017: On December 2016 the value of exports was 22 billion lekë, increasing by 22.5 % compared with the same period of previous year and decreasing by 4.5 % compared with November 2016. The value of imports in December 2016, was 56 billion lekë, increasing by 4.4 % compared with the same period of previous year and by 12.1 % compared with November 2016. This month the trade deficit is 34 billion lekë signing an decrease by 4.7 % compared with December 2015 and an increase by 26.5 % compared with November 2016.

Fig.1 Flow of goods, November 2015 – December 2016 (billionALL)



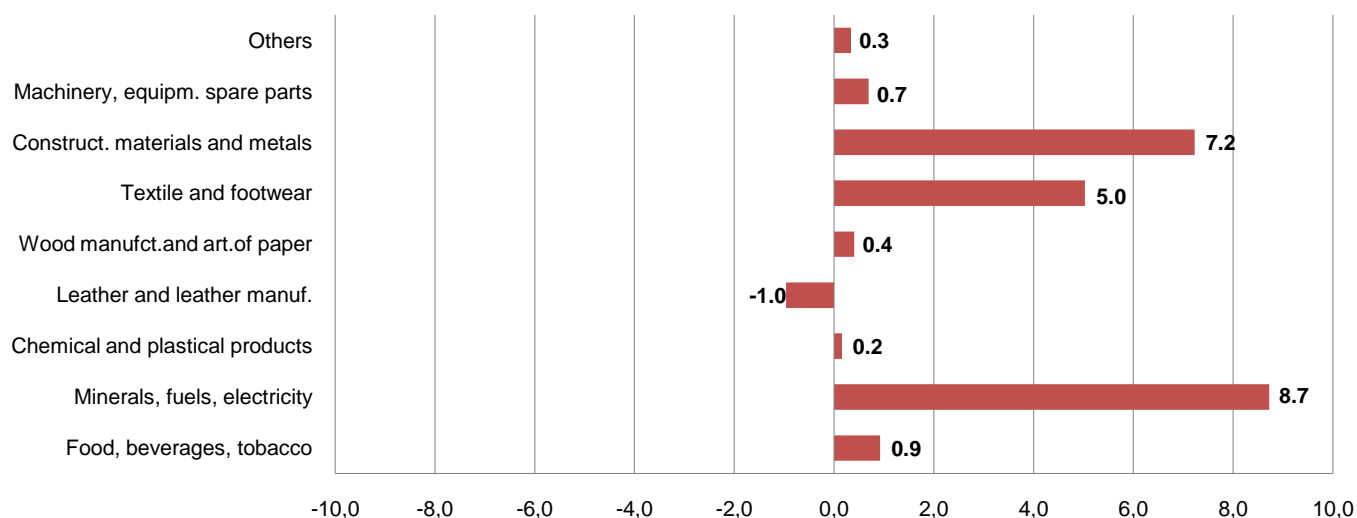
During 2016 the value of exports was 243 billion lekë, increasing by 0.1 % compared with previous year and the value of imports was 579 billion lekë, increasing by 6.3 %. Trade deficit was 335 billion lekë, increasing by 11.3 % compared with 2015.

The influence of the main groups in the annual change in exports:

In annual increase of exports by 22.5 % this month a positive contribution was given by the groups: "Minerals, fuels, electricity" with +8.7 percentage point, "Construction materials and metals" with +7.2

percentage point, "Textile and footwear" with +5.0 percentage point. While a negative contribution was given by the group: "Leather and leather manufactories" with -1.0 percentage point.

Fig.2 Annual impact of groups in exports

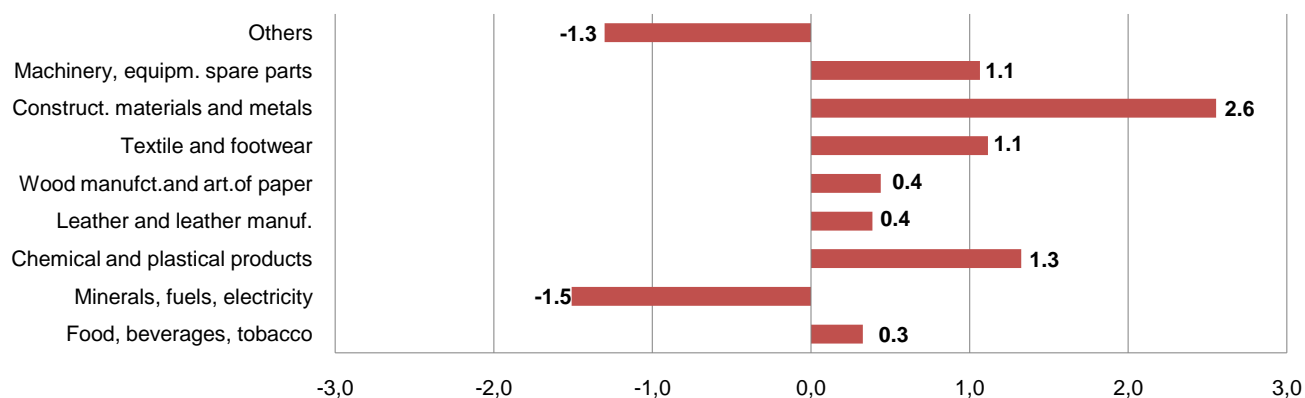


During 2016 exports are increased by 0.1 % compared with previous year. A positive contribution was given by the groups: "Textile and footwear" with +6.8 percentage point, "Food, beverages, tobacco" with +1.8 percentage point, "Machinery, equipment and spare parts" with +0.2 percentage point. While a negative contribution was given by the group: "Minerals, fuels, electricity" with -7.2 percentage point, "Construction materials and metals" with -1.4 percentage point, "Wood manufacture and article of paper" with -0.2 percentage point.

The influence of the main groups in the annual change in imports:

In annual increase of imports by 4.4 % in December 2016 a positive contribution was given by the groups: "Construction materials and metals" with +2.6 percentage point, "Chemical and plastical products" with +1.3 percentage point, "Textile and footwear" with +1.1 percentage point. While a negative contribution was given by the group: "Minerals, fuels, electricity" with -1.5 percentage points.

Fig.3 Annual impact of groups in imports



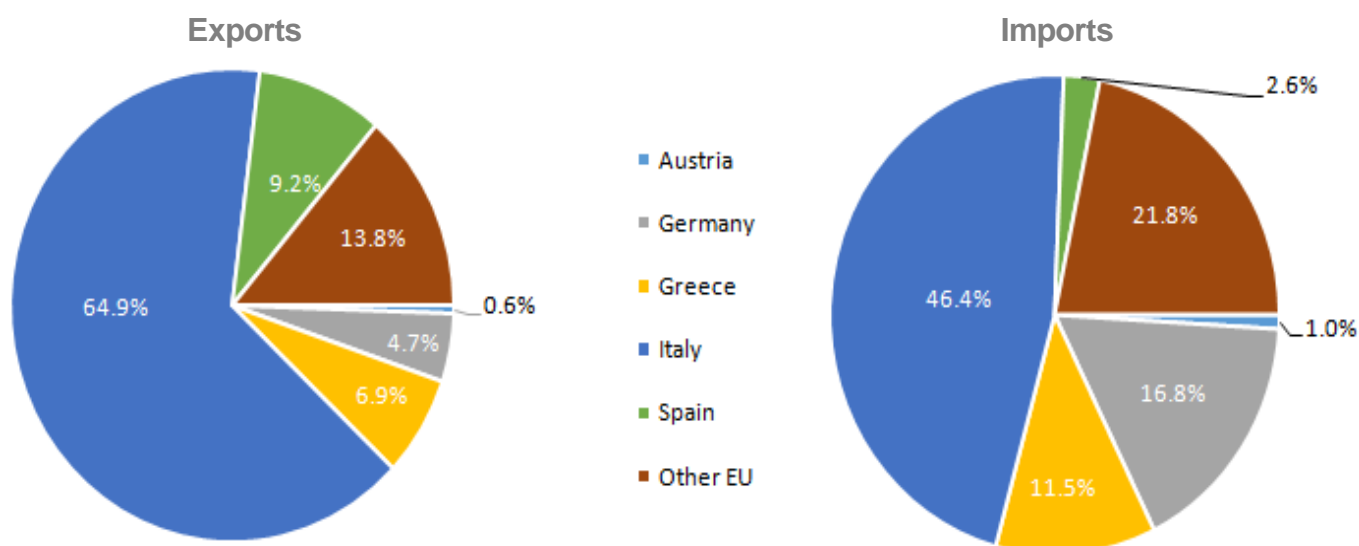
During 2016 imports are increased by 6.3 % compared with previous year. A positive contribution was given by the groups: “Machinery, equipment and spare parts” with +2.5 percentage point, “Textile and footwear” with +2.0 percentage point, “Construction materials and metals” with +1.6 percentage point, While a negative contribution was given by the group: “Minerals, fuels, electricity” with -1.9 percentage point.

The performance of trade in goods by partner countries

In December 2016, countries with which Albania has had the highest increase of exports, compared to December 2015 are: Kosovo with (26.8 %), Spain with (16,2 %) and China with (190.0 %). While, countries with which has had a decrease of exports are: Italy with (-2.9 %), Bulgaria with (-18.7 %) and Hungary with (-7.1 %).

In December 2016, countries with which Albania has had the highest increase of imports, compared to December 2015 are: Italy with (4.8 %), Germany with (37.9 %) and Spain with (10.8 %). While, countries with which has had a decrease of imports are: Turkey with (-18.8 %), Serbia with (-13.2 %) and Spain with (-14.7 %).

Fig.4 Foreign Trade in Goods by several EU countries, December 2016



Trade with the EU countries is 66.3 % of total trade. In December 2016, exports to EU countries occupied 70.6 % of total export and imports from EU countries occupied 64.6 % of total import. The main trade partners remain Italy (34.4 %), Germany (8.7 %), China (8.3 %) and Greece (6.7 %).

During 2016, countries with which Albania has had the highest increase of exports, compared with previous year, are: Italy with (7.4 %), Greece with (17.2 %) and Germany with (9.4 %). While, countries with which has had a decrease of exports are: Kosovo with (-20.6 %), Malta with (-28.5 %) and Spain with (-36.6 %).

During 2016, countries with which Albania has had the highest increase of exports, compared with previous year, are: Italy with (2.8 %), Germany with (51.2 %) and China with (8.8 %). While, countries with which has had a decrease of exports are: Serbia with (-12.9 %), France with (-4.8 %) and Russia with (-9.4 %).

Trade with the EU countries, in 2016 is 67,5 % of total trade. In 2016, exports to EU countries occupied 77.9 % of total export and imports from EU countries occupied 63.2 % of total import. The main trade partners are: Italy (36.8 %), Germany (7.7 %), China (7.1 %) dhe Greece (6.9 %).

Tab. 1 Flow of goods (billion ALL)

Years	Months	Exports	Annual Change (%)	Imports	Annual Change (%)	Trade Balance	Percentage of cover
2000		37	-23.5	157	-1.5	-120	23.6
2001		44	19.1	190	21.0	-146	23.2
2002		47	7.7	210	10.6	-163	22.6
2003		54	14.7	226	7.4	-171	24.1
2004		62	14.0	236	4.5	-174	26.3
2005		66	6.0	262	11.1	-196	25.1
2006		77	17.6	299	14.1	-222	25.9
2007		97	25.5	376	25.8	-279	25.8
2008		113	15.8	440	16.9	-327	25.6
2009		105	-7.2	429	-2.5	-324	24.4
2010		162	54.6	478	11.4	-316	33.8
2011		197	21.9	544	13.9	-347	36.2
2012		213	8.2	528	-2.9	-315	40.3
2013		246	15.7	517	-2.1	-271	47.6
2014		256	3.8	552	6.7	-297	46.3
2015		243	-4.9	545	-1.4	-301	44.7
2016		243	0.1	579	6.3	-335	42.1
2014	01 - 14	18	-1.4	35	2.2	-17	51.2
	02 - 14	20	27.9	39	17.5	-19	51.8
	03 - 14	21	10.4	42	11.1	-21	50.1
	04 - 14	23	10.3	44	6.8	-22	51.3
	05 - 14	25	9.1	48	6.9	-23	52.5
	06 - 14	22	8.3	49	18.9	-27	45.6
	07 - 14	23	-5.7	47	-2.5	-24	48.6
	08 - 14	19	2.3	45	5.2	-26	41.7
	09 - 14	21	-0.2	47	12.5	-26	45.0
	10 - 14	22	-0.2	52	12.3	-30	42.5
	11 - 14	21	1.8	48	7.1	-27	44.5
	12 - 14	19	-9.9	54	-8.4	-35	35.7
2015	01 - 15	18	-0.6	35	0.9	-17	50.4
	02 - 15	18	-9.4	39	-0.8	-20	47.3
	03 - 15	22	4.1	44	4.6	-22	49.9
	04 - 15	21	-8.5	44	-1.4	-23	47.6
	05 - 15	24	-4.8	44	-8.0	-20	54.3
	06 - 15	24	7.4	49	-0.8	-25	49.3
	07 - 15	23	-1.6	52	11.1	-30	43.0
	08 - 15	15	-17.3	40	-10.0	-25	38.3
	09 - 15	20	-4.3	44	-7.1	-24	46.3
	10 - 15	20	-9.3	50	-4.2	-30	40.2
	11 - 15	19	-8.9	49	1.9	-30	39.7
	12 - 15	18	-7.6	53	-1.7	-35	33.5
2016	01 - 16	16	-7.8	35	-1.0	-18	47.0
	02 - 16	18	-4.4	42	7.6	-24	42.0
	03 - 16	19	-12.7	47	5.6	-28	41.2
	04 - 16	21	1.7	52	19.0	-31	40.7
	05 - 16	21	-14.8	52	16.7	-31	39.6
	06 - 16	23	-6.4	52	6.2	-29	43.5
	07 - 16	23	-0.2	50	-4.5	-28	44.9
	08 - 16	16	6.9	47	15.9	-30	35.3
	09 - 16	21	0.9	48	9.3	-28	42.8
	10 - 16	22	7.3	50	-0.8	-28	43.5
	11 - 16	23	17.5	50	1.0	-27	46.2
	12 - 16	22	22.5	56	4.4	-34	39.3

Tab.2 Foreign trade in goods by partner countries (million ALL)

	Exports				Imports			
	Dec-15	Dec-16	Jan-Dec 2015	Jan-Dec 2016	Dec-15	Dec-16	Jan-Dec 2015	Jan-Dec 2016
EU countries	14,312	15,417	183,021	189,700	32,927	35,835	336,041	365,857
Austria	153	85	2,976	1,188	528	341	7,308	6,376
United Kingdom	9	51	454	533	523	382	5,034	4,157
Germany	615	718	7,568	8,282	4,355	6,005	36,349	54,957
Greece	858	1,060	9,511	11,150	3,671	4,129	42,718	45,656
Italy	10,307	10,007	123,703	132,887	15,871	16,632	164,990	169,568
Spain	1,225	1,424	12,607	7,994	1,085	926	8,715	12,660
Croatia	37	60	488	943	500	461	7,451	4,402
Others of EU	1,107	2,012	25,715	26,724	6,394	6,959	63,475	68,081
China	440	1,276	6,570	7,452	4,661	5,162	46,567	50,652
Kosovo	1,369	1,736	20,921	16,605	423	585	5,483	5,819
Macedonia	338	543	6,414	6,421	852	811	8,577	7,765
Russia	2	0	52	61	1,070	591	12,027	10,891
USA	133	127	2,144	1,604	838	1,165	8,633	10,861
Turkey	205	622	6,943	2,803	5,036	4,091	43,726	45,654
Ukraine	5	-	171	203	326	382	3,561	3,589
Switzerland	14	213	2,406	2,574	817	397	8,264	6,821
Others	998	1,897	14,541	16,069	6,220	6,492	71,726	71,066
Total	17,817	21,831	243,183	243,492	53,170	55,510	544,605	578,976

Tab. 3 Foreign trade by group of goods (million ALL)

Group of goods	Exports				Imports			
	Dec-15	Dec-16	Jan-Dec 2015	Jan-Dec 2016	Dec-15	Dec-16	Jan-Dec 2015	Jan-Dec 2016
Total	17,817	21,831	243,183	243,492	53,170	55,510	544,605	578,976
Food, beverages, tobacco	1,979	2,144	21,066	25,346	9,020	9,193	96,897	100,336
Minerals, fuels, electricity	3,897	5,451	64,505	46,563	5,114	4,312	60,164	49,842
Chemical and plastical products	279	308	3,961	4,358	6,786	7,491	74,926	79,993
Leather and leather manuf.	315	144	2,897	2,596	1,327	1,532	15,916	17,378
Wood manufact.and art.	636	708	8,336	7,764	1,758	1,991	21,736	23,357
Textile and footwear	7,407	8,303	90,091	106,604	6,918	7,511	69,300	79,963

Construct. materials and	2,011	3,299	35,280	31,891	5,998	7,356	67,541	76,001
Machinery, equipm. spare	740	864	10,789	11,272	13,397	13,963	117,280	130,736
Others	552	612	6,257	7,098	2,853	2,161	20,846	21,370

Tab. 4 Exports of group of goods and main partners (Jan-Dec. 2015, Jan-Dec. 2016)
(million ALL)

Group of goods	Italy		Kosovo		Greece		Germany	
	2015	2016	2015	2016	2015	2016	2015	2016
Total	123,703	132,887	20,921	16,605	9,511	11,150	7,568	8,282
Food, beverages, tobacco	6,883	7,925	2,301	2,569	2,187	2,288	1,173	1,149
Minerals, fuels, electricity	12,281	8,647	8,558	3,561	703	428	79	398
Chemical and plastical products	1,227	1,270	1,130	1,274	340	437	21	316
Leather and leather manuf.	2,586	2,321	2	0	28	67	16	7
Wood manufct.and art. of paper	6,320	5,730	317	327	810	949	105	86
Textile and footwear	72,735	84,219	81	95	3,823	4,650	4,834	5,228
Construct. materials and metals	12,941	12,528	6,834	6,828	1,252	1,799	700	323
Machinery, equipm. spare parts	6,036	7,307	565	709	68	141	430	521
Others	2,694	2,939	1,133	1,241	299	391	209	255

Tab. 5 Imports of group of goods and main partners (Jan-Dec. 2015, Jan-Dec. 2016)
(million ALL)

Group of goods	Italy		Germany		China		Greece	
	2015	2016	2015	2016	2015	2016	2015	2016
Total	164,990	169,568	36,349	54,957	46,567	50,652	42,718	45,656
Food, beverages, tobacco	17,105	17,299	3,927	4,473	583	577	13,090	13,995
Minerals, fuels, electricity	25,931	18,999	468	538	45	748	6,298	6,504
Chemical and plastical products	15,030	16,908	6,776	6,719	3,928	4,434	7,067	7,619
Leather and leather manuf.	12,556	13,608	51	5	783	773	95	136
Wood manufct.and art. of paper	6,940	6,574	850	860	837	1,004	2,579	2,828
Textile and footwear	35,309	40,224	2,314	2,560	9,053	10,056	3,023	3,618
Construct. materials and metals	18,670	16,729	1,047	14,743	8,556	8,699	6,369	6,850
Machinery, equipm. spare parts	28,107	33,586	19,332	23,408	18,832	19,886	2,824	2,620
Others	4,625	5,084	1,183	1,542	3,514	3,984	1,706	1,757

DEFINITIONS

Exports are goods destined to a third country, placed under customs export or outward processing arrangements or re-exported following inward processing.

The FOB (free on board) value of exports of goods is the value of the goods at the exporter's customs frontier.

Imports are goods arrived from a third country and are directly placed, or are left in warehouse, under customs procedure of release for free circulation, inward processing or processing under customs control.

The cost, insurance and freight (CIF) price is the price of a good delivered at the frontier of the importing country, or the price of a service delivered to a resident, before the payment of any import duties or other taxes on imports or trade and transport margins within the country.

Combined Nomenclature (CN) is a goods nomenclature used by international trade in goods statistics and for customs tariffs.

Member State of European Union Belgium, Germany, France, Italy, Luxembourg, Netherlands, United Kingdom, Denmark, Ireland, Greece, Spain, Portugal, Austria, Finland, Sweden, Cyprus, Czech Republic, Estonia, Hungary, Latvia, Lithuania, Malta, Poland, Slovakia, Slovenia, Bulgaria, Romania, Croatia.

Explanation of Symbols

0 value less than half of unit of measure

- no value

÷ up to

