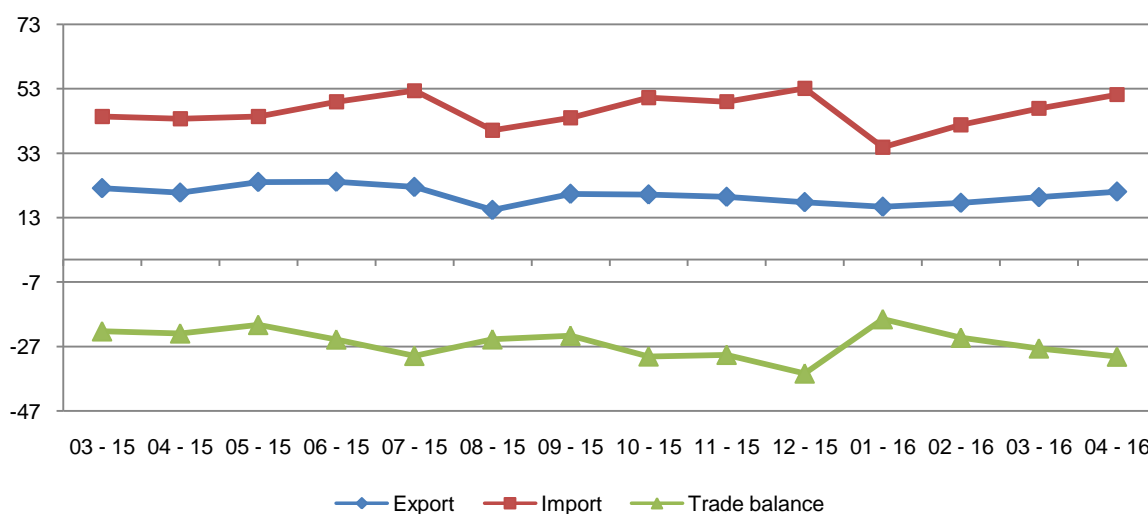


Foreign Trade in Goods

April, 2015

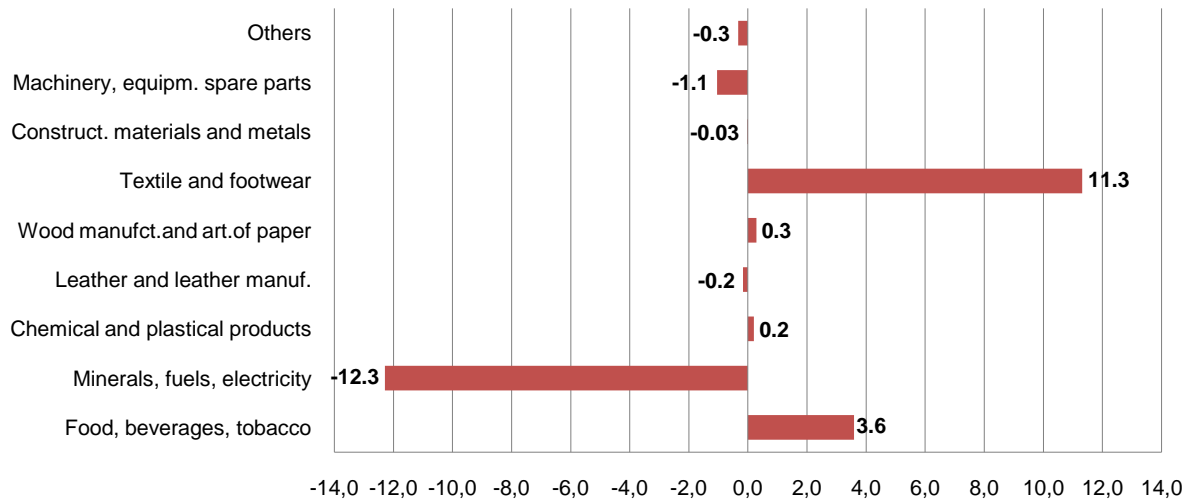
Tirana, May 30, 2015: On April 2016 the value of exports was 21 billion lekë, increasing by 1.5 % compared with April 2015 and by 9.0 % compared with March 2016. The value of imports in April 2016, was 51 billion lekë, increasing by 17.2 % compared with April 2015 and 9.1 % compared with March 2016. This month the trade deficit is 30 billion lekë signing an increase by 31.4 % compared with April 2015 and 9.2 % compared with March 2016.

Fig.1 Flow of goods, March 2015 – April 2016 (billionALL)

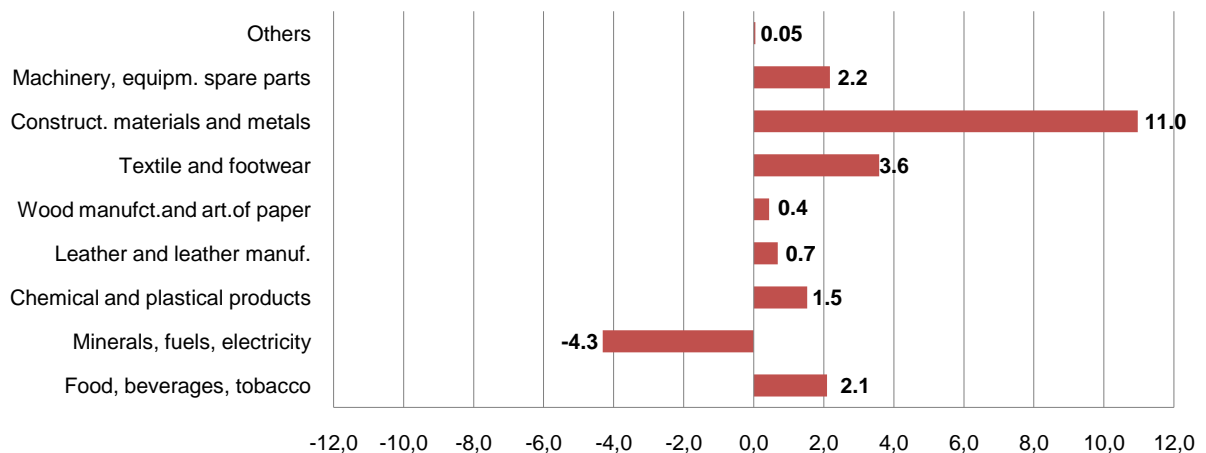


The influence of the main groups in the annual change in exports:

In annual increase of exports by 1.5 % this month a positive contribution was given by the groups: "Textile and footwear" with +11.3 percentage point, "Food, beverages, tobacco" with +3.6 percentage point, "Wood manufactories and articles of paper" with +0.3 percentage point. While a negative contribution was given by the groups: "Minerals, fuels, electricity" with -12.3 percentage point, "Machinery, equipment spare parts" with -1.1 percentage point and "Leather and leather manufactories" with -0.2 percentage point.

Fig.2 Annual impact of groups in exports**The influence of the main groups in the annual change in imports:**

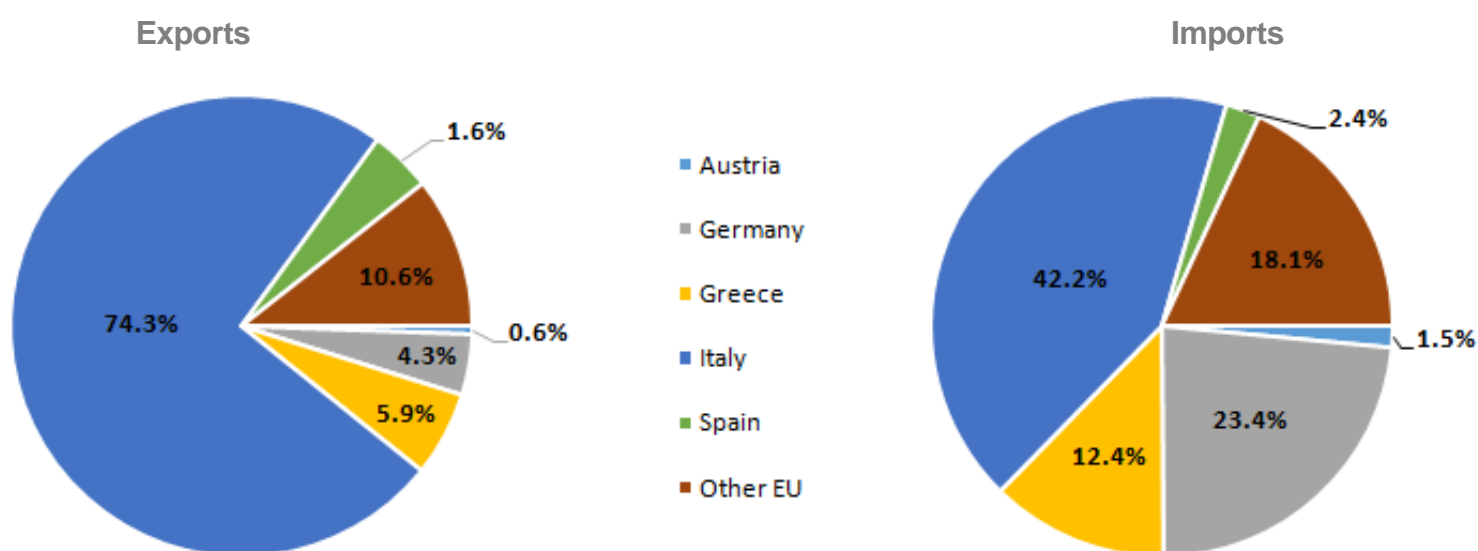
In annual increase of imports by 17.2 % in April 2016 a positive contribution was given by the groups: "Construction materials and metals" with +11.0 percentage point, "Textile and footwear" with +3.6 percentage point and "Machinery, equipment spare parts" with +2.2 percentage point. While a negative contribution was given by the group: "Machinery, equipment spare parts" with -4.3 percentage point.

Fig.3 Annual impact of groups in imports

In April 2016, countries with which Albania has had the highest increase of exports, compared to April 2015 are: Italy with 22.7 %, Greece with 18.7 % and Serbia with 127.2 %. While, countries with which has had a decrease of exports are: Kosovo with 31.4 %, Macedonia with 10.6 % and Spain with 21.8 %.

In April 2016, countries with which Albania has had the highest increase of imports, compared to April 2015 are: Italy with 5.6 %, Germany with 207.9 % and Greece with 0.2 %. While, countries with which has had a decrease of imports are: China with 19.8 %, Serbia with 12.3 % and USA with 45.0 %.

Fig.4 Foreign Trade in Goods by several EU countries, April 2016



Trade with the EU countries is 68.9 % of total trade. In April 2016, exports to EU countries occupied 73.1 % of total export and imports from EU countries occupied 67.2 % of total import.

The main trade partners remain Italy (35.9 %), Germany (12.0 %), Greece (7.2 %) and Turkey (5.5 %).

Tab. 1 Flow of goods (million ALL)

Years	Months	Exports	Imports	Trade Balance	Percentage of cover
2000		37,037	157,109	-120,072	23.6
2001		44,096	190,155	-146,059	23.2
2002		47,490	210,368	-162,878	22.6
2003		54,487	225,983	-171,496	24.1
2004		62,121	236,072	-173,951	26.3
2005		65,818	262,191	-196,373	25.1
2006		77,405	299,147	-221,742	25.9
2007		97,171	376,194	-279,023	25.8
2008		112,572	439,894	-327,322	25.6
2009		104,515	428,839	-324,324	24.4
2010		161,548	477,768	-316,220	33.8
2011		196,897	544,004	-347,108	36.2
2012		213,030	528,490	-315,460	40.3
2013		246,397	517,378	-270,981	47.6
2014		255,759	552,279	-296,520	46.3
2015		243,183	544,588	-301,405	44.7
2014	01 - 14	17,869	34,922	-17,053	51.2
	02 - 14	20,304	39,193	-18,889	51.8
	03 - 14	21,302	42,478	-21,176	50.1
	04 - 14	22,720	44,308	-21,588	51.3
	05 - 14	25,317	48,241	-22,924	52.5
	06 - 14	22,490	49,351	-26,860	45.6
	07 - 14	22,911	47,158	-24,247	48.6
	08 - 14	18,582	44,601	-26,019	41.7
	09 - 14	21,324	47,402	-26,078	45.0
	10 - 14	22,269	52,436	-30,167	42.5
	11 - 14	21,380	48,080	-26,700	44.5
	12 - 14	19,290	54,108	-34,818	35.7
2015	01 - 15	17,763	35,245	-17,482	50.4
	02 - 15	18,392	38,889	-20,497	47.3
	03 - 15	22,179	44,437	-22,258	49.9
	04 - 15	20,783	43,696	-22,913	47.6
	05 - 15	24,098	44,382	-20,284	54.3
	06 - 15	24,158	48,952	-24,794	49.4
	07 - 15	22,540	52,411	-29,871	43.0
	08 - 15	15,376	40,126	-24,750	38.3
	09 - 15	20,403	44,027	-23,624	46.3
	10 - 15	20,204	50,249	-30,044	40.2
	11 - 15	19,468	49,017	-29,549	39.7
	12 - 15	17,817	53,157	-35,340	33.5
2016	01 - 16	16,380	34,879	-18,499	47.0
	02 - 16	17,592	41,841	-24,249	
	03 - 16	19,361	46,936	-27,575	41.2
	04 - 16	21,102	51,215	-30,114	41.2

Tab.2 Foreign trade in goods by partner countries (million ALL)

	Exports				Imports			
	April-15	April-16	Jan-April 2015	Jan-April 2016	April-15	April-16	Jan-April 2015	Jan-April 2016
EU countries	13,730	15,418	56,202	60,516	27,859	34,409	97,374	109,989
Austria	243	87	1,766	403	564	513	1,763	1,721
United Kingdom	64	3	241	112	321	395	1,439	1,248
Germany	483	656	2,226	2,630	2,615	8,052	10,509	16,806
Greece	771	916	2,972	3,257	4,274	4,281	13,407	13,862
Italy	9,334	11,450	39,277	43,233	13,744	14,518	48,336	52,246
Spain	857	670	3,338	1,738	624	823	2,106	3,248
Croatia	17	44	123	197	450	416	1,474	1,234
Others of EU	1,960	1,590	6,259	8,946	5,266	5,412	18,341	19,623
China	821	424	2,547	1,332	3,413	2,736	15,782	14,915
Kosovo	2,738	1,877	7,121	5,003	512	609	1,703	1,540
Macedonia	757	677	1,931	1,659	672	715	2,469	2,087
Russia	2	-	2	1	565	1,707	3,031	3,881
USA	120	146	1,258	474	1,160	638	3,648	2,765
Turkey	560	97	4,038	362	3,686	3,850	12,417	13,595
Ukraine	1	10	6	46	253	704	1,105	1,361
Switzerland	468	553	1,022	940	589	396	3,224	2,778
Others	1,588	1,901	4,990	4,100	4,986	5,453	21,512	21,961
Total	20,783	21,102	79,118	74,434	43,696	51,215	162,267	174,871

Tab. 3 Foreign trade by group of goods (million ALL)

Group of goods	Exports				Imports			
	April-15	April-16	Jan-April 2015	Jan-April 2016	April-15	April-16	Jan-April 2015	Jan-April 2016
Total	20,783	21,102	79,118	74,434	43,696	51,215	162,267	174,871
Food, beverages, tobacco	1,427	2,172	5,012	6,880	7,739	8,655	29,134	30,627
Minerals, fuels, electricity	6,779	4,226	21,083	12,208	4,958	3,073	18,370	15,065
Chemical and plastical products	344	385	1,240	1,381	6,768	7,435	23,390	24,739
Leather and leather manuf.	238	203	892	975	1,379	1,681	4,416	5,080
Wood manufct.and art. of paper	606	666	2,788	2,517	1,623	1,813	6,170	6,888
Textile and footwear	6,463	8,815	28,332	35,027	5,468	7,034	20,213	24,470
Construct. materials and metals	3,166	3,161	13,206	9,717	5,442	10,237	20,478	25,309
Machinery, equipm. spare parts	1,090	872	4,716	3,550	8,670	9,619	34,146	36,919
Others	671	602	1,848	2,180	1,648	1,669	5,949	5,774

Tab. 4 Exports of group of goods and main partners, January-April 2016 (million ALL)

Group of goods	Italy	Kosovo	Greece	Germany	Others
Total	43,233	5,003	3,257	2,630	20,311
Food, beverages, tobacco	2,416	704	631	357	2,771
Minerals, fuels, electricity	1,543	889	132	95	9,547
Chemical and plastical products	473	439	102	100	266
Leather and leather manuf.	887	0	19	3	65
Wood manufct.and art. of paper	1,908	95	272	29	213
Textile and footwear	28,463	19	1,535	1,668	3,342
Construct. materials and metals	4,072	2,257	431	180	2,778
Machinery, equipm. spare parts	2,489	218	27	140	676
Others	982	382	106	57	653

Tab. 5 Imports of group of goods and main partners, January-April 2016 (million ALL)

Group of goods	Italy	Germany	China	Greece	Others
Total	52,246	16,806	14,915	13,862	77,041
Food, beverages, tobacco	5,425	1,331	169	4,837	18,866
Minerals, fuels, electricity	5,613	183	85	897	8,287
Chemical and plastical products	4,942	1,938	1,222	2,459	14,178
Leather and leather manuf.	4,057	1	228	36	758
Wood manufct.and art. of paper	2,036	265	303	761	3,524
Textile and footwear	12,634	800	2,704	1,199	7,133
Construct. materials and metals	5,387	4,815	3,946	2,212	8,948
Machinery, equipm. spare parts	10,526	7,114	5,131	953	13,194
Others	1,626	358	1,128	508	2,154

DEFINITIONS

Exports are goods destined to a third country, placed under customs export or outward processing arrangements or re-exported following inward processing.

The FOB (free on board) value of exports of goods is the value of the goods at the exporter's customs frontier.

Imports are goods arrived from a third country and are directly placed, or are left in warehouse, under customs procedure of release for free circulation, inward processing or processing under customs control.

The cost, insurance and freight (CIF) price is the price of a good delivered at the frontier of the importing country, or the price of a service delivered to a resident, before the payment of any import duties or other taxes on imports or trade and transport margins within the country.

Combined Nomenclature (CN) is a goods nomenclature used by international trade in goods statistics and for customs tariffs.

Member State of European Union Belgium, Germany, France, Italy, Luxembourg, Netherlands, United Kingdom, Denmark, Ireland, Greece, Spain, Portugal, Austria, Finland, Sweden, Cyprus, Czech Republic, Estonia, Hungary, Latvia, Lithuania, Malta, Poland, Slovakia, Slovenia, Bulgaria, Romania, Croatia.

Explanation of Symbols

0 value less than half of unit of measure

- no value

÷ up to