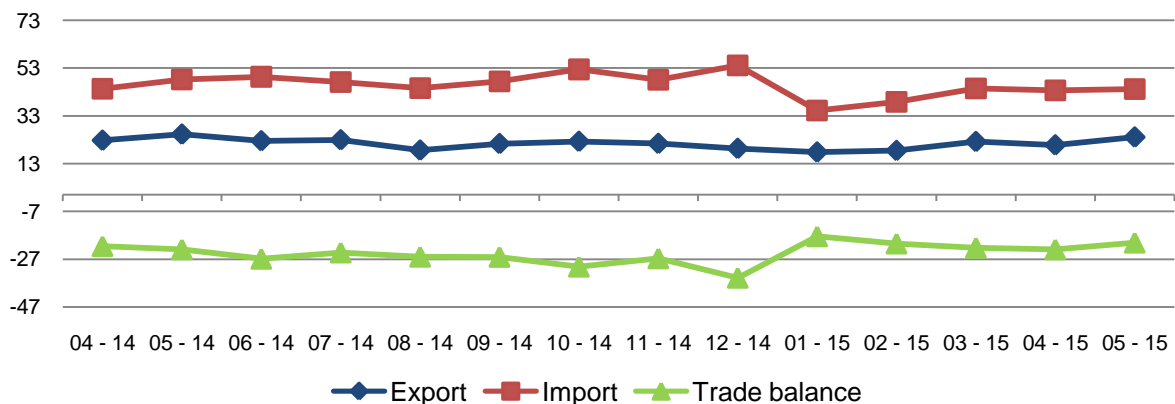


# International Trade in Goods

## May, 2015

**Tirana, June 30, 2015:** On May 2015 the value of exports was 24 billion lekë, decreasing by 4.8 % compared with May 2014 and increasing 16.0 % compared with April 2015. The value of imports in May 2015, was 44 billion lekë, decreasing by 8.3 % compared with May 2014 and 1.2 % compared with April 2015. This month the trade deficit is 20 billion lekë signing an increase by 12.2 % compared with May 2014 and April 2015.

Fig.1 Flow of goods, April 2014– May 2015 (billionALL)



Trade with the EU countries is 67.7 % of total trade. The main trade partners remain Italy (39.2 %), Greece (7.3 %), Turkey (5.9 %) and Germany (5.3 %),

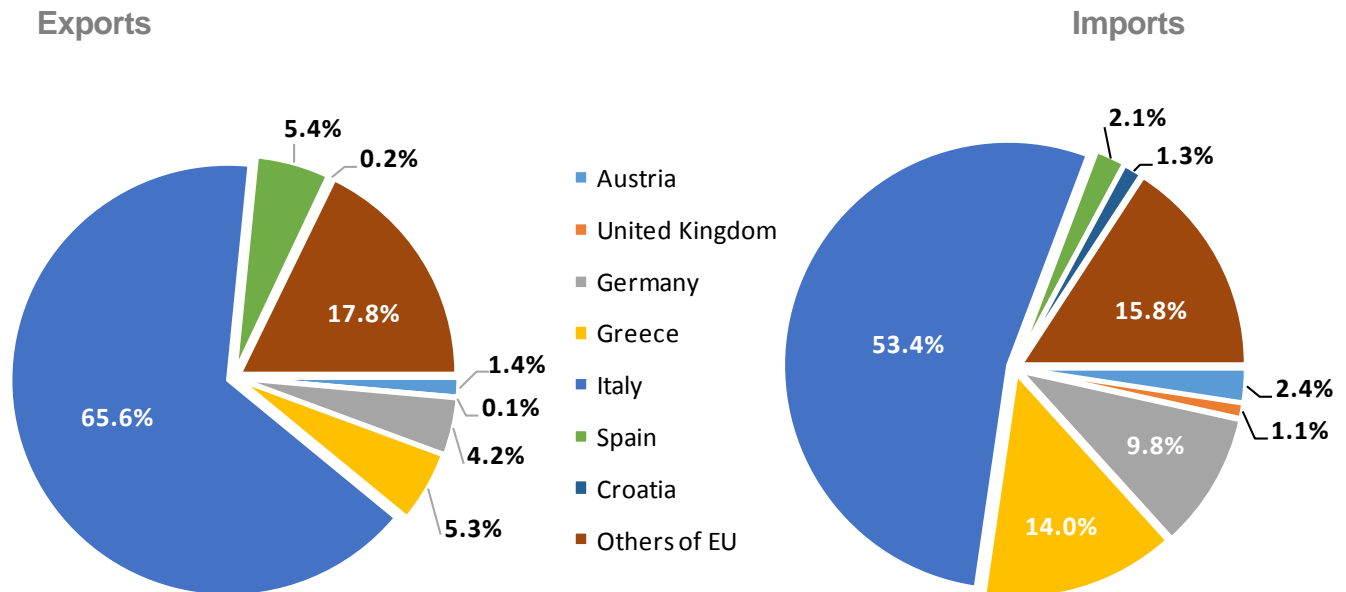
On May 2015 exports to EU countries occupied 70.4 % of total export, decreased by 2.9 %, compared with previous year. Partner with the largest weight in exports to EU countries is Italy that occupies 65.6 %, Spain with 5.4 % and Greece with 5.3 % of total export. EU countries with which Albania has had the highest increase of exports, compared with May 2014 are: Germany, Croatia and Austria. While, countries with which has had a decrease of exports are: United Kingdom, Spain and Italy.

Exports to Kosovo in April 2015, compared with previous year, increased occupying 11.3 % of total export, while exports to Turkey and China decreased occupying, each country, 3.0 % of total export.

On May 2015 imports from EU countries occupied 66.3 % of total import, increased by 0.3 %, compared with May 2014. Partner with the largest weight in imports from EU countries is Italy that occupies 53.4 %, Greece with 14.0 % and Germany with 9.8 %. EU countries with which Albania has had the highest increase of imports, compared with May 2014 are: Italy, Austria and Germany. While, countries with which has had a decrease of exports are: United Kingdom, Greece and Croatia.

Imports from Kosovo, in April 2015, compared with previous year, increased occupying 1.2 % of total import, while imports from China and Turkey decreased occupying respectively 5.7 % and 7.5 % of total import

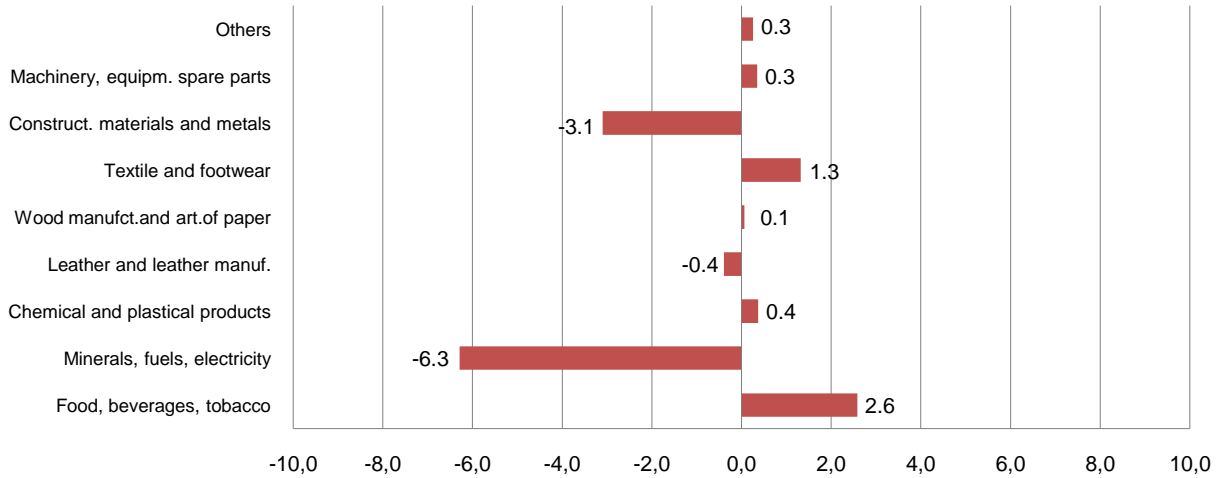
**Fig.2 Foreign Trade in Goods by EU countries, May 2015**



**The influence of the main groups in the annual change in exports:**

Annual decrease of exports by 4.8 % this month is influenced by groups: “Food, beverages, tobacco” contributed with +2.6 percentage point , “Textile and footwear” contributed with +1.3 percentage point, “Chemical and plastical products” contributed with +0.4 percentage point, “Minerals, fuels, electricity” contributed with -6.3 percentage point, “Construction materials and metals” contributed with -3.1 percentage point, “Leather and leather manufactures” contributed with -0.4 percentage point.

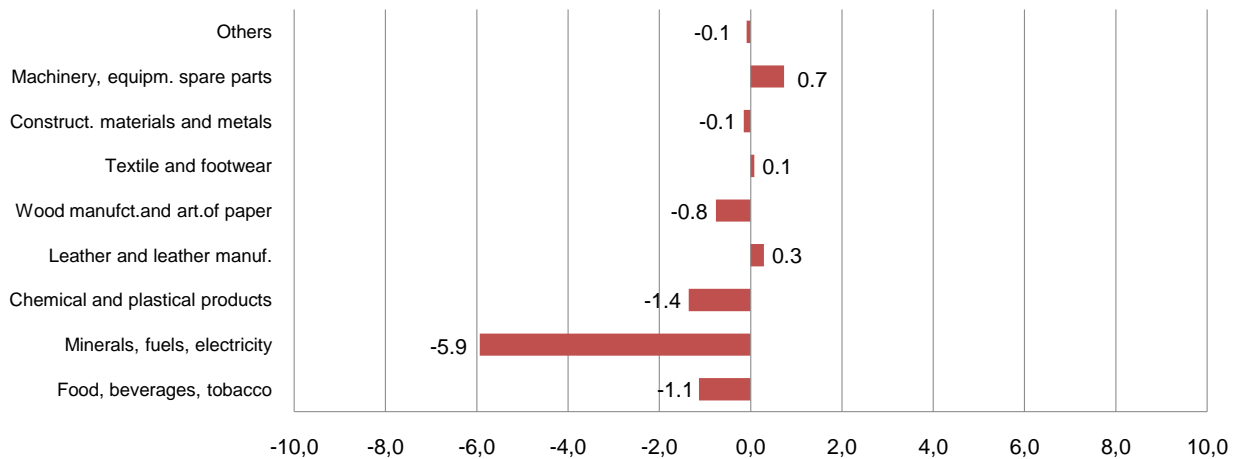
Fig.3 Annual impact of groups in Exports



**The influence of the main groups in the annual change in imports:**

Annual decrease in May 2015 is influenced by groups: “Machinery, equipment, spare parts” contributed with +0.7 percentage point, “Leather and leather manufactures” contributed with +0.3 percentage point, “Textile and footwear” contributed with +0.1 percentage point, “Minerals, fuels, electricity” contributed with -5.9 percentage point, “Chemical and plastical products” contributed with -1.4 percentage point, “Wood manufactures and article of paper” contributed with -0.8 percentage point.

Fig.4 Annual impact of groups in Imports



Tab. 1 Flow of goods (million ALL)

Years	Months	Exports	Imports	Trade Balance	Percentage of cover
2000		37,037	157,109	-120,072	23.6
2001		44,096	190,155	-146,059	23.2
2002		47,490	210,368	-162,877	22.6
2003		54,487	225,983	-171,496	24.1
2004		62,121	236,072	-173,951	26.3
2005		65,818	262,191	-196,373	25.1
2006		77,405	299,147	-221,742	25.9
2007		97,171	376,194	-279,023	25.8
2008		112,572	439,894	-327,322	25.6
2009		104,515	428,839	-324,324	24.4
2010		161,548	477,768	-316,220	33.8
2011		196,897	544,004	-347,108	36.2
2012		213,030	528,490	-315,460	40.3
2013		246,391	517,378	-270,987	47.6
2014		255,759	552,276	-296,517	46.3
2013	01 - 13	18,128	34,159	-16,031	53.1
	02 - 13	15,876	33,351	-17,475	47.6
	03 - 13	19,301	38,229	-18,928	50.5
	04 - 13	20,600	41,499	-20,899	49.6
	05 - 13	23,201	45,130	-21,929	51.4
	06 - 13	20,761	41,500	-20,739	50.0
	07 - 13	24,288	48,385	-24,097	50.2
	08 - 13	18,155	42,402	-24,247	42.8
	09 - 13	21,360	42,121	-20,761	50.7
	10 - 13	22,301	46,679	-24,378	47.8
	11 - 13	21,008	44,876	-23,868	46.8
	12 - 13	21,411	59,045	-37,634	36.3
2014	01 - 14	17,869	34,922	-17,053	51.2
	02 - 14	20,304	39,193	-18,890	51.8
	03 - 14	21,302	42,478	-21,176	50.1
	04 - 14	22,720	44,308	-21,588	51.3
	05 - 14	25,317	48,241	-22,924	52.5
	06 - 14	22,490	49,351	-26,860	45.6
	07 - 14	22,911	47,158	-24,247	48.6
	08 - 14	18,582	44,601	-26,020	41.7
	09 - 14	21,324	47,402	-26,078	45.0
	10 - 14	22,269	52,436	-30,166	42.5
	11 - 14	21,380	48,080	-26,700	44.5
	12 - 14	19,290	54,106	-34,815	35.7
2015	01 - 15	17,763	35,237	-17,474	50.4
	02 - 15	18,392	38,884	-20,492	47.3
	03 - 15	22,179	44,437	-22,257	49.9
	04 - 15	20,764	43,690	-22,926	47.5
	05 - 15	24,094	44,229	-20,135	54.5

**Tab.2 Foreign trade in goods by partner countries (million ALL)**

	Exports				Imports			
	May-14	May-15	Jan-May 2014	Jan-May 2015	May-14	May-15	Jan-May 2014	Jan-May 2015
<b>EU countries</b>	<b>17,468</b>	<b>16,955</b>	<b>85,514</b>	<b>73,137</b>	<b>29,228</b>	<b>29,305</b>	<b>124,654</b>	<b>126,66</b>
Austria	193	233	606	1,999	619	709	2,63	2,472
United Kingdom	17	9	85	250	421	309	1,989	1,742
Germany	461	715	2,325	2,94	2,707	2,881	12,431	13,39
Greece	756	902	3,713	3,873	5,457	4,103	21,296	17,51
Italy	11,37	11,126	59,238	50,383	13,662	15,662	59,727	63,993
Spain	1,315	921	7,718	4,259	720	616	3,098	2,722
Croatia	22	33	137	156	478	393	2,159	1,867
Others of EU	3,335	3,018	11,692	9,277	5,163	4,633	21,324	22,966
China	1,548	730	4,222	3,277	3,589	2,523	14,241	18,306
Kosovo	1,611	2,721	6,027	9,843	421	518	2,256	2,222
Macedonia	503	713	1,858	2,643	775	690	3,038	3,159
Russia	-	9	3	11	1,221	1,089	4,358	4,121
USA	175	107	600	1,365	1,717	683	5,98	4,332
Turkey	2,392	715	4,353	4,753	3,563	3,296	14,815	15,713
Ukraine	1	33	16	39	375	185	1,73	1,29
Switzerland	265	148	765	1,17	1,179	367	8,852	3,592
Others	1,355	1,962	4,154	6,953	6,173	5,571	29,22	27,083
<b>Total</b>	<b>25,317</b>	<b>24,094</b>	<b>107,512</b>	<b>103,192</b>	<b>48,241</b>	<b>44,229</b>	<b>209,143</b>	<b>206,477</b>

**Tab. 3 Foreign trade by group of goods (million ALL)**

Group of goods	Exports				Imports			
	May-14	May-15	Jan-May 2014	Jan-May 2015	May-14	May-15	Jan-May 2014	Jan-May 2015
<b>Total</b>	<b>25,317</b>	<b>24,094</b>	<b>107,512</b>	<b>103,192</b>	<b>48,241</b>	<b>44,229</b>	<b>209,143</b>	<b>206,477</b>
Food, beverages, tobacco	1,481	2,135	5,889	7,147	8,290	7,743	35,016	36,878
Minerals, fuels, electricity	9,835	8,242	38,839	29,306	7,832	4,971	36,803	23,337
Chemical and plastical products	337	431	1,354	1,671	6,554	5,899	27,377	29,280
Leather and leather manuf.	326	226	1,302	1,119	1,626	1,766	5,649	6,181
Wood manufct.and art. of paper	607	623	3,715	3,411	1,982	1,614	8,386	7,784
Textile and footwear	6,984	7,319	35,886	35,650	5,990	6,029	25,365	26,243
Construct. materials and metals	4,458	3,674	15,198	16,880	5,783	5,711	26,620	26,189
Machinery, equipm. spare parts	788	876	3,497	5,592	8,389	8,742	36,990	42,883
Others	502	567	1,832	2,415	1,796	1,754	6,937	7,703

**Tab. 4 Exports of group of goods and main partners, January - May 2015 (million ALL)**

Group of goods	Italy	Kosovo	Turkey	Spain	Others
<b>Total</b>	<b>50,383</b>	<b>9,843</b>	<b>4,753</b>	<b>4,259</b>	<b>33,955</b>
Food, beverages, tobacco	2,274	697	103	266	3,807
Minerals, fuels, electricity	4,970	5,415	709	3,456	14,757
Chemical and plastical products	529	476	81	1	584
Leather and leather manuf.	971	-	39	2	108
Wood manufct.and art. of paper	2,668	102	45	1	595
Textile and footwear	29,571	36	40	252	5,751
Construct. materials and metals	5,817	2,473	3,640	277	4,673
Machinery, equipm. spare parts	2,510	184	30	4	2,863
Others	1,073	458	66	0	818

**Tab. 5 Imports of group of goods and main partners, January - May 2015 (million ALL)**

Group of goods	Italy	China	Greece	Turkey	Others
<b>Total</b>	<b>63,993</b>	<b>18,306</b>	<b>17,510</b>	<b>15,713</b>	<b>90,956</b>
Food, beverages, tobacco	6,988	231	5,448	1,818	22,393
Minerals, fuels, electricity	9,339	32	2,993	276	10,696
Chemical and plastical products	5,485	1,648	2,793	2,219	17,136
Leather and leather manuf.	4,986	266	42	111	776
Wood manufct.and art. of paper	2,920	314	875	965	2,710
Textile and footwear	13,923	3,017	1,253	4,533	3,517
Construct. materials and metals	7,480	4,053	2,353	2,838	9,465
Machinery, equipm. spare parts	11,019	7,278	1,188	2,127	21,270
Others	1,852	1,467	564	826	2,994

# DEFINITIONS

Exports are goods destined to a third country, placed under customs export or outward processing arrangements or re-exported following inward processing.

The FOB (free on board) value of exports of goods is the value of the goods at the exporter's customs frontier.

Imports are goods arrived from a third country and are directly placed, or are left in warehouse, under customs procedure of release for free circulation, inward processing or processing under customs control.

The cost, insurance and freight (CIF) price is the price of a good delivered at the frontier of the importing country, or the price of a service delivered to a resident, before the payment of any import duties or other taxes on imports or trade and transport margins within the country.

Combined Nomenclature ( CN) is a goods nomenclature used by international trade in goods statistics and for customs tariffs.

Member State of European Union Belgium, Germany, France, Italy, Luxembourg, Netherlands, United Kingdom, Denmark, Ireland, Greece, Spain, Portugal, Austria, Finland, Sweden, Cyprus, Czech Republic, Estonia, Hungary, Latvia, Lithuania, Malta, Poland, Slovakia, Slovenia, Bulgaria, Romania, Croatia.

## **Explanation of Symbols**

0 value less than half of unit of measure

- no value

÷ up to